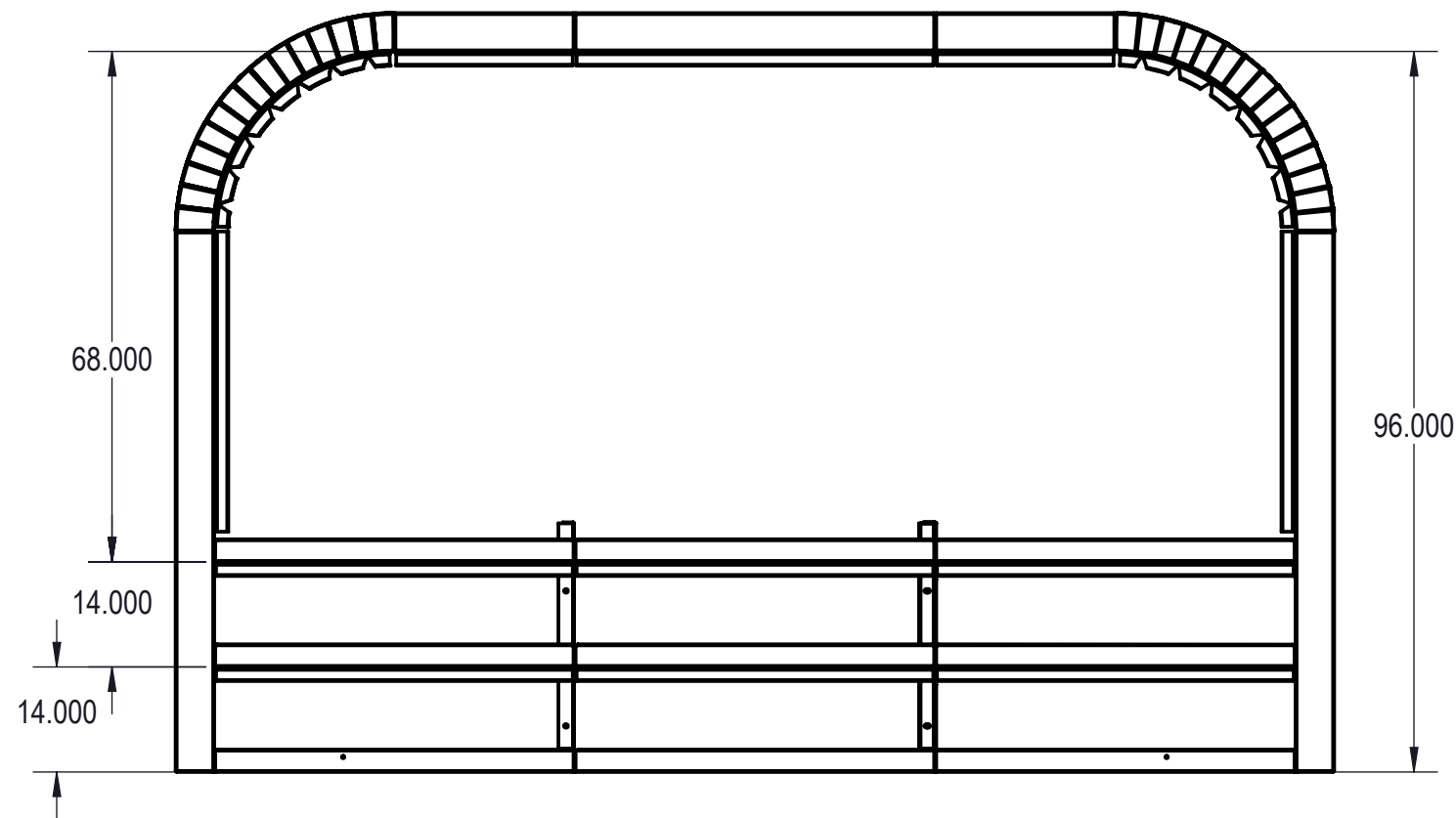



MIRROR NUMBER: **MADE FROM:** **CHECK IN DATE/TIME:** *Wednesday, January 31, 2018 12:52:04 PM*

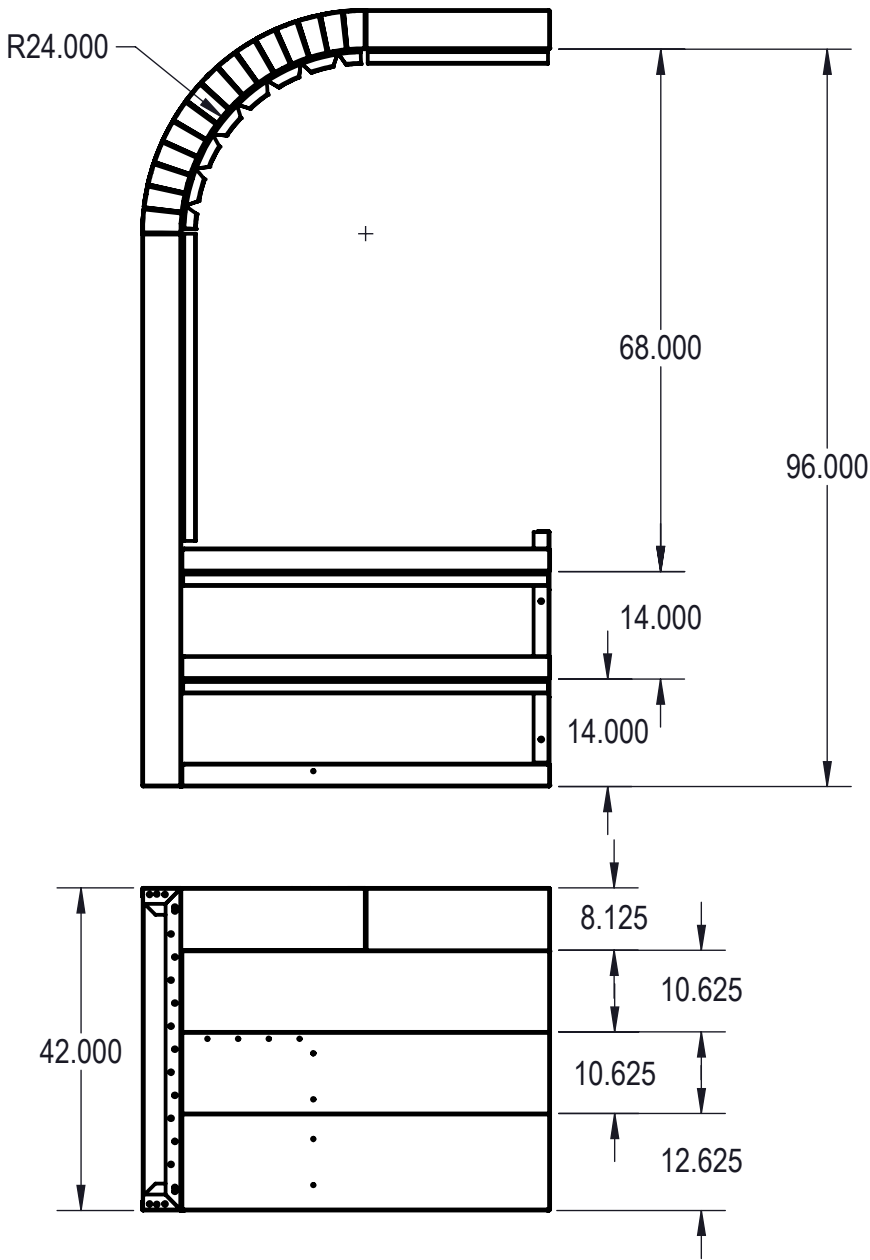
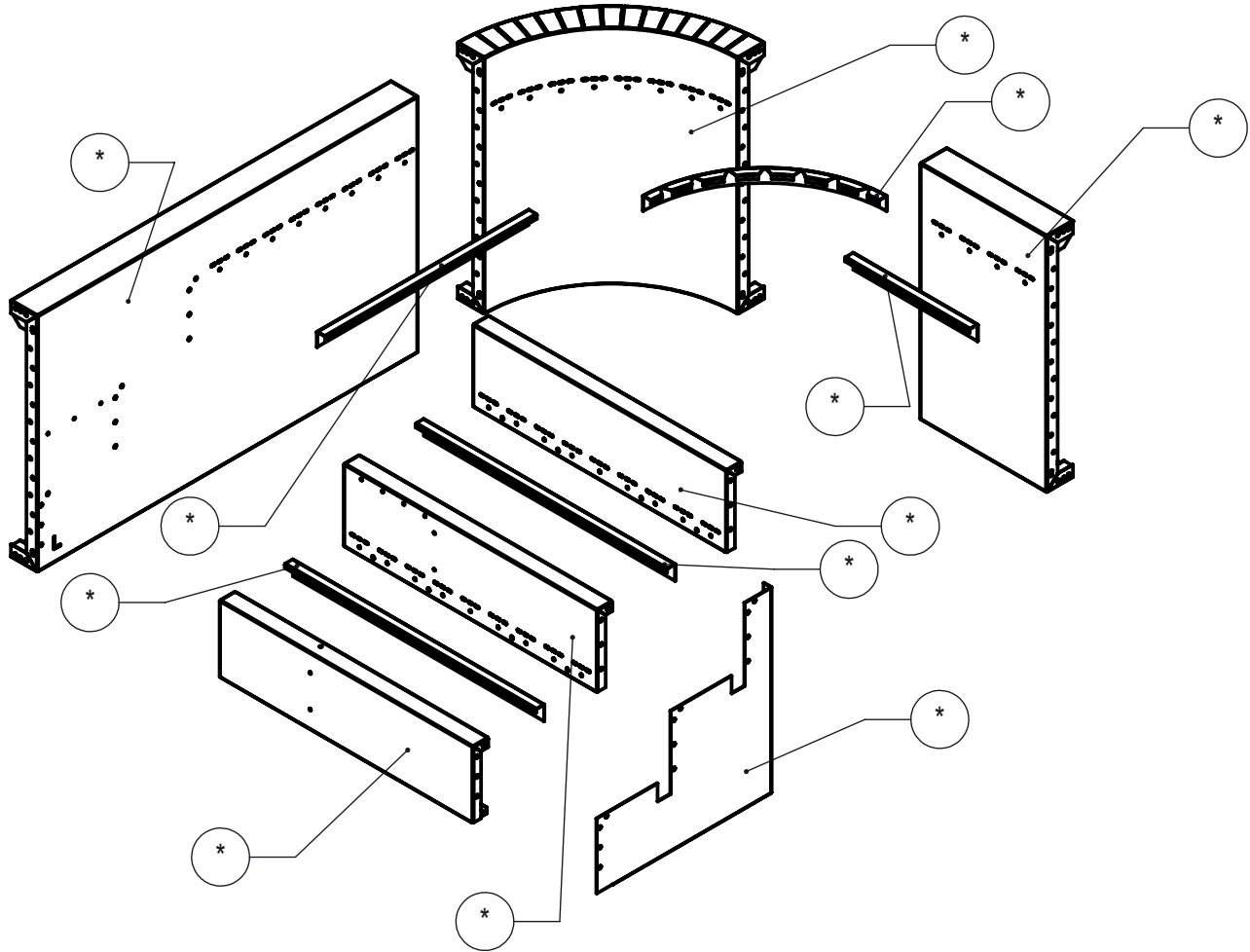


- EXCAVATION NOTES:

- IMPORTANT NOTES:

<div>ENGINEERING DRAWING NUMBER</div> <div>00017477</div>	WEIGHT:	<div>UNLESS OTHERWISE SPECIFIED</div> <div>DIMENSIONS ARE IN INCHES</div> <div>TOLERANCES</div> <div>DECIMALS: X \pm .1</div> <div>XX \pm .01</div> <div>XXX \pm .001</div> <div>XXXX \pm .0005</div> <div>ANGULAR: X \pm 0.5</div> <div>THIRD ANGLE PROJECTION</div> <div>  </div>	DESIGNED BY:	CREATION DATE:	<div>SAMSON STEEL</div> <div>TITLE: STEP, 8' X 12', 2" RADIUS, 3 TREAD, OPEN POUR, TANNING LEDGE, MODULAR</div> <div>PART NUMBER:</div> <div>HSSM17477</div> <div> <div>SCALE: 1:48</div> <div>SHEET: 1 OF 4</div> </div> <div>SIZE: B</div>
	lbs		MWILLIAMS	01/31/18	
	VOLUME:				
	Inch ³		DETAILED BY:	DETAILED DATE:	
			MWILLIAMS	01/31/18	
	COLOR:		LAST REVISED BY:	LAST REVISED DATE:	
	NA		mwilliams	01/31/18	
HEAT TREAT:	MATERIAL:				
NA					
FINISH:					
TEXTURE:					
1496					

REVISION HISTORY				
REV.	DESCRIPTION	DATE	ECO	BY
A	RELEASED FOR PRODUCTION	01/29/18		MWILLIAMS
B	RELEASED FOR PRODUCTION	01/31/18		MWILLIAMS



NOTES:

- THESE ARE FINISHED DIMENSIONS READY FOR THE LINER.
- DIMENSIONS ARE FROM INSIDE POOL PANELS.
- ROPE AND FLOAT ASSEMBLY SHOULD BE INSTALLED IN ACCORDANCE WITH CURRENT ANSI/ASPS/ICC REGULATIONS
- HYDRA LINER TRACK FOR STEPS IS INSTALLED WITH THE BARB FACING THE RISER WALL ON THE STEP.

EXCAVATION NOTES:

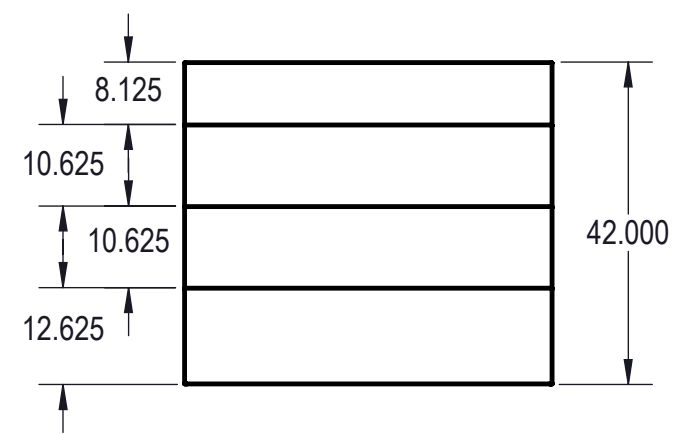
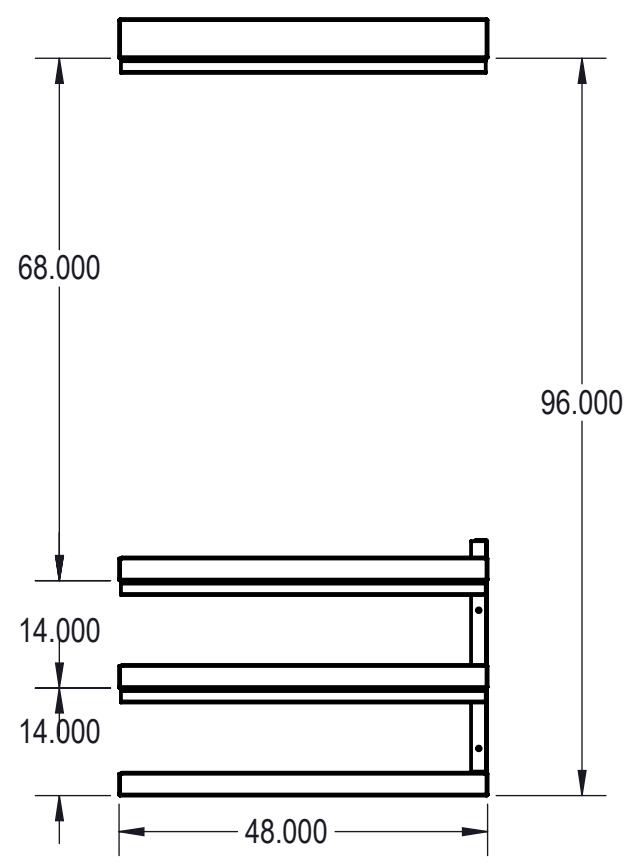
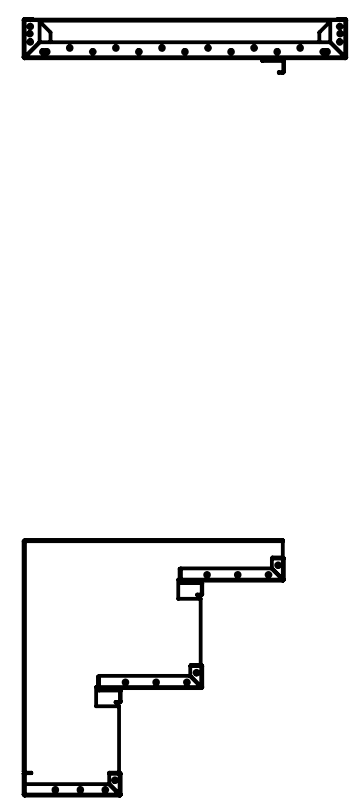
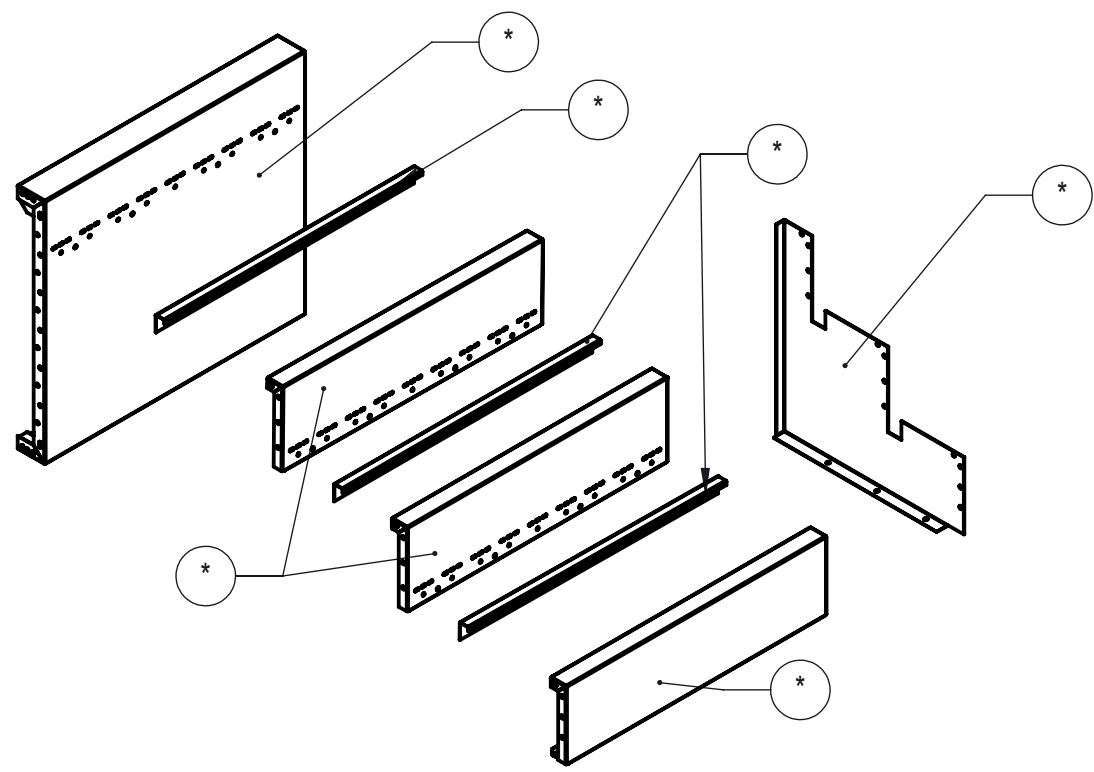
- ROUGH EXCAVATION SHOULD BE 2" DEEPER IN EACH INSTANCE.
- SOIL TO HAVE MINIMUM BEARING CAPACITY OF 1500 PSF.
- LOCATE TOP OF POOL AT LEAST 6" ABOVE THE SURROUNDING LAND ELEVATION.
- SEE "OVER DIG DETAIL" FOR EXCAVATION AROUND POOL.
- FILL VOIDS UNDER BASE OF PANELS AND TAMP WELL.
- BACK FILL WITH NON-EXPANSIVE MATERIAL.
- FOLLOW ALL CURRENT ANSI / APSP / ICC GUIDELINES FOR RESIDENTIAL POOLS

IMPORTANT NOTES:

THIS DOCUMENT IS FOR ILLUSTRATIVE PURPOSES ONLY. THE DEALER OR CONTRACTOR WHO SELLS OR INSTALLS YOUR POOL IS AN INDEPENDENT CONTRACTOR AND IS NOT AN AGENT OF THE MANUFACTURER. THE CONSTRUCTION METHODS ILLUSTRATED HERE ARE SUGGESTIONS AND APPLY ONLY TO NORMAL GROUND CONDITIONS. THERE MAY BE ADDITIONAL PRECAUTIONS AND/OR METHODS OF CONSTRUCTION. PROPER INSTALLATION IS THE RESPONSIBILITY OF THE DEALER/BUILDER/CONTRACTOR.

ITEM	FILE NAME	DESCRIPTION	CUSTOMER DRAWING #	VENDOR PART #	QTY.
1	BOLT, PACK	BOLT, FLANGE, 3/8-16 X 1", PACK (50)	HPS1916	HPS1916	2
2	SBRACE	BRACE, FOLD OVER WITH TURNBUCKLE, STEEL, HPSFOB	HPSFOB	HPSFOB	1
3	00017208	LINER TRACK, 2' RADIUS, RIGHT OR LEFT	00017208	00017208	1
4	00017133	LINER TRACK, BACK	00017133	00017133	1
5	00017122	LINER TRACK, OPEN POUR	00017122	00017122	2
6	00017209	LINER TRACK, RIGHT OR LEFT	00017209	00017209	1
7	00017129	PANEL BACK, 2' LONG, 3 TREAD, OPEN POUR, TANNING LEDGE	00017129	00017129	1
8	00017225	PANEL STEP, 3 TREAD, BENCH, OPEN POUR, LEFT SIDE, BENCH OPTION ASSEMBLY	00017225	00017225	1
9	00017166	PANEL 2' RADIUS, 3 TREAD, OPEN POUR, TANNING LEDGE ASSEMBLY	00017166	00017166	1
10	00017118	SUPPORT, CENTER, 3 TREAD, OPEN POUR	00017118	00017118	1
11	00017158	TREAD, STEP, 3 TREAD, "C", BENCH OPTION, 4' LONG, LEFT SIDE	00017158	00017158	1
12	00017123	TREAD, STEP, 3 TREAD, OPEN POUR, "B", 4'	00017123	00017123	1
13	00017160	TREAD, STEP, 3 TREAD, OPEN POUR, "D", 4' LONG, LEFT SIDE	00017160	00017160	1

ENGINEERING DRAWING NUMBER 00017223	WEIGHT: lbs	UNLESS OTHERWISE SPECIFIED DIMENSIONS ARE IN INCHES TOLERANCES DECIMALS: X ± .1 XX ± .01 XXX ± .001 XXXX ± .0005 ANGULAR: X ± 0.5 THIRD ANGLE PROJECTION 	DESIGNED BY: MWILLIAMS	CREATION DATE: 01/15/18	SAMSON STEEL	
	VOLUME: Inch³		DETAILED BY: MWILLIAMS	DETAILED DATE: 01/31/18		
	COLOR: NA		LAST REVISED BY: mwiliams	LAST REVISED DATE: 01/31/18	TITLE: STEP, 4' X 8", 2' RADIUS, 3 TREAD, LEFT, OPEN POUR, TANNING LEDGE, SUB ASSEMBLY	
	HEAT TREAT: NA		MATERIAL:			
	FINISH: NA				PART NUMBER:	
	TEXTURE: 556					
					SCALE: 1:32	SIZE: B
					SHEET: 3 OF 4	
					HSM17223	



NOTES:

- 1. THESE ARE FINISHED DIMENSIONS READY FOR THE LINER.
- 2. DIMENSIONS ARE FROM INSIDE POOL PANELS.
- 3. ROPE AND FLOAT ASSEMBLY SHOULD BE INSTALLED IN ACCORDANCE WITH CURRENT ANSI/ASPS/ICC REGULATIONS
- 4. HYDRA LINER TRACK FOR STEPS IS INSTALLED WITH THE BARB FACING THE RISER WALL ON THE STEP.

EXCAVATION NOTES:

- 5. ROUGH EXCAVATION SHOULD BE 2" DEEPER IN EACH INSTANCE.
- 6. SOIL TO HAVE MINIMUM BEARING CAPACITY OF 1500 PSF.
- 7. LOCATE TOP OF POOL AT LEAST 6" ABOVE THE SURROUNDING LAND ELEVATION.
- 8. SEE "OVER DIG DETAIL" FOR EXCAVATION AROUND POOL.
- 9. FILL VOIDS UNDER BASE OF PANELS AND TAMP WELL.
- 10. BACK FILL WITH NON-EXPANSIVE MATERIAL.
- 11. FOLLOW ALL CURRENT ANSI / APSP / ICC GUIDELINES FOR RESIDENTIAL POOLS

IMPORTANT NOTES:

THIS DOCUMENT IS FOR ILLUSTRATIVE PURPOSES ONLY. THE DEALER OR CONTRACTOR WHO SELLS OR INSTALLS YOUR POOL IS AN INDEPENDENT CONTRACTOR AND IS NOT AN AGENT OF THE MANUFACTURER. THE CONSTRUCTION METHODS ILLUSTRATED HERE ARE SUGGESTIONS AND APPLY ONLY TO NORMAL GROUND CONDITIONS. THERE MAY BE ADDITIONAL PRECAUTIONS AND/OR METHODS OF CONSTRUCTION. PROPER INSTALLATION IS THE RESPONSIBILITY OF THE DEALER/BUILDER/CONTRACTOR.

ITEM	FILE NAME	DESCRIPTION	CUSTOMER DRAWING #	VENDOR PART #	QTY.
1	BOLT, PACK	BOLT, FLANGE, 3/8-16 X 1", PACK (50)	HPS1916	HPS1916	1
2	SBRACE	BRACE, FOLD OVER WITH TURNBUCKLE, STEEL, HPSFOB	HPSFOB	HPSFOB	1
3	00017122	LINER TRACK, OPEN POUR	00017122	00017122	3
4	00017121	PANEL BACK, 4' LONG, 3 TREAD, OPEN POUR, TANNING LEDGE ASSEMBLY	00017121	00017121	1
5	00017118	SUPPORT, CENTER, 3 TREAD, OPEN POUR	00017118	00017118	1
6	00017123	TREAD, STEP, 3 TREAD, OPEN POUR, "B", 4'	00017123	00017123	2
7	00017124	TREAD, STEP, 3 TREAD, OPEN POUR, "D", 4' LONG	00017124	00017124	1

ENGINEERING DRAWING NUMBER
00017119

WEIGHT:
lbs

VOLUME:
Inch³

COLOR:
NA

HEAT TREAT:
NA

FINISH:
NA

TEXTURE:
384

UNLESS OTHERWISE SPECIFIED

DIMENSIONS ARE IN INCHES
TOLERANCES
DECIMALS: X ± .1
 XX ± .01
 XXX ± .001
 XXXX ± .0005

ANGULAR: X ± 0.5

THIRD ANGLE PROJECTION

DESIGNED BY:
MWILLIAMS

DETAILED BY:
MWILLIAMS

LAST REVISED BY:
mwilliams

MATERIAL:

CREATION DATE:
01/05/18

DETAILED DATE:
01/31/18

LAST REVISED DATE:
01/31/18

SAMSON STEEL

TITLE: STEP, 4' X 8', 3 TREAD, OPEN POUR, TANNING LEDGE, SUB ASSEMBLY

PART NUMBER:
HSM17119

SCALE:
1:32

SHEET:
4 OF 4

SIZE:
B