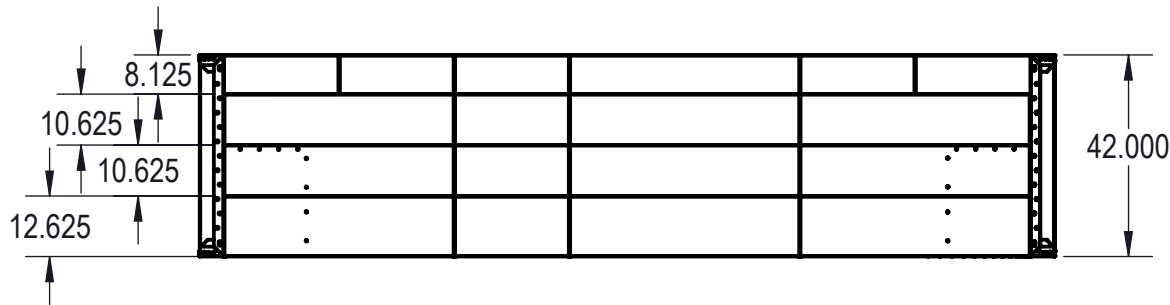
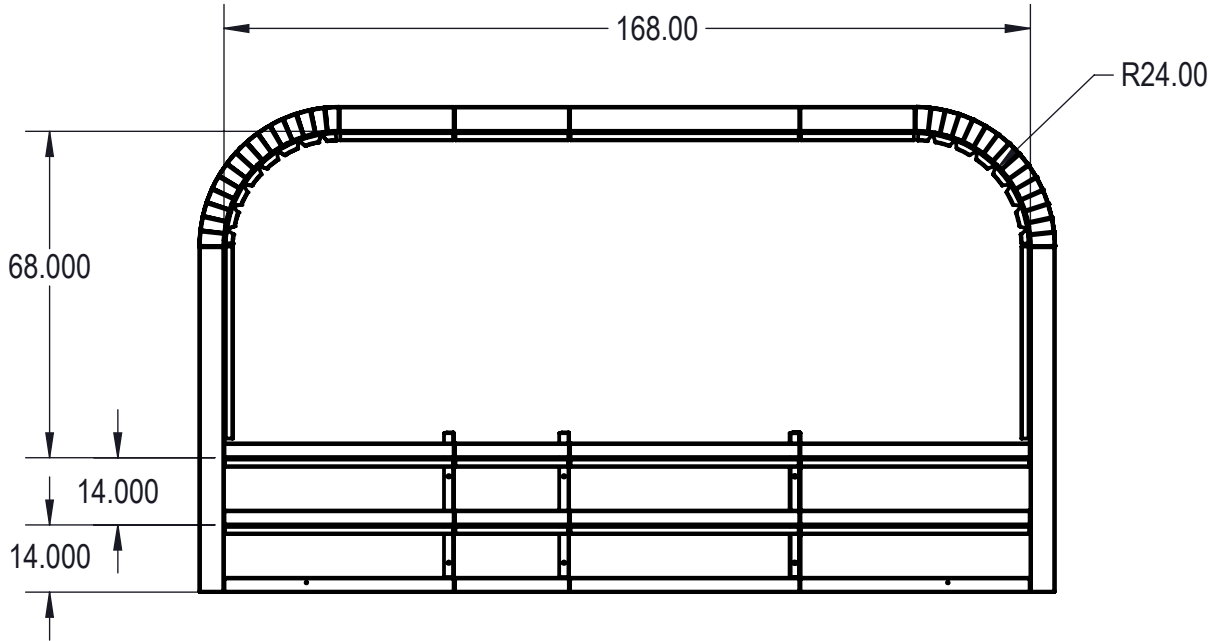
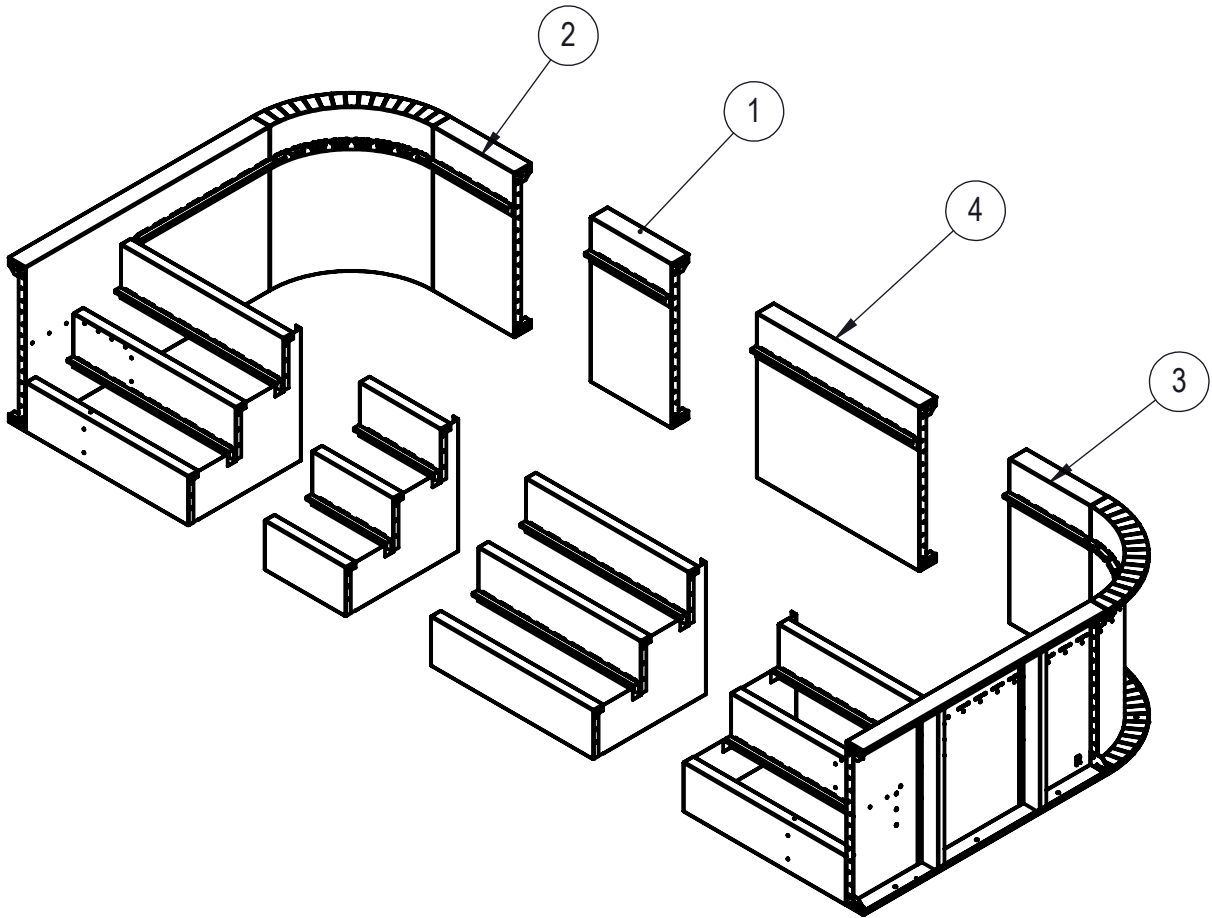


REVISION HISTORY				
REV.	DESCRIPTION	DATE	ECO	BY
A	RELEASED FOR PRODUCTION	1/29/2018		BUMPHREY
C	ADDED TEXTURE	1/29/2018		BUMPHREY
D	RELEASED FOR PRODUCTION	01/31/18		MWILLIAMS



NOTES:

- THESE ARE FINISHED DIMENSIONS READY FOR THE LINER.
- DIMENSIONS ARE FROM INSIDE POOL PANELS.
- ROPE AND FLOAT ASSEMBLY SHOULD BE INSTALLED IN ACCORDANCE WITH CURRENT ANSI/ASPS/ICC REGULATIONS
- HYDRA LINER TRACK FOR STEPS IS INSTALLED WITH THE BARB FACING THE RISER WALL ON THE STEP.

EXCAVATION NOTES:

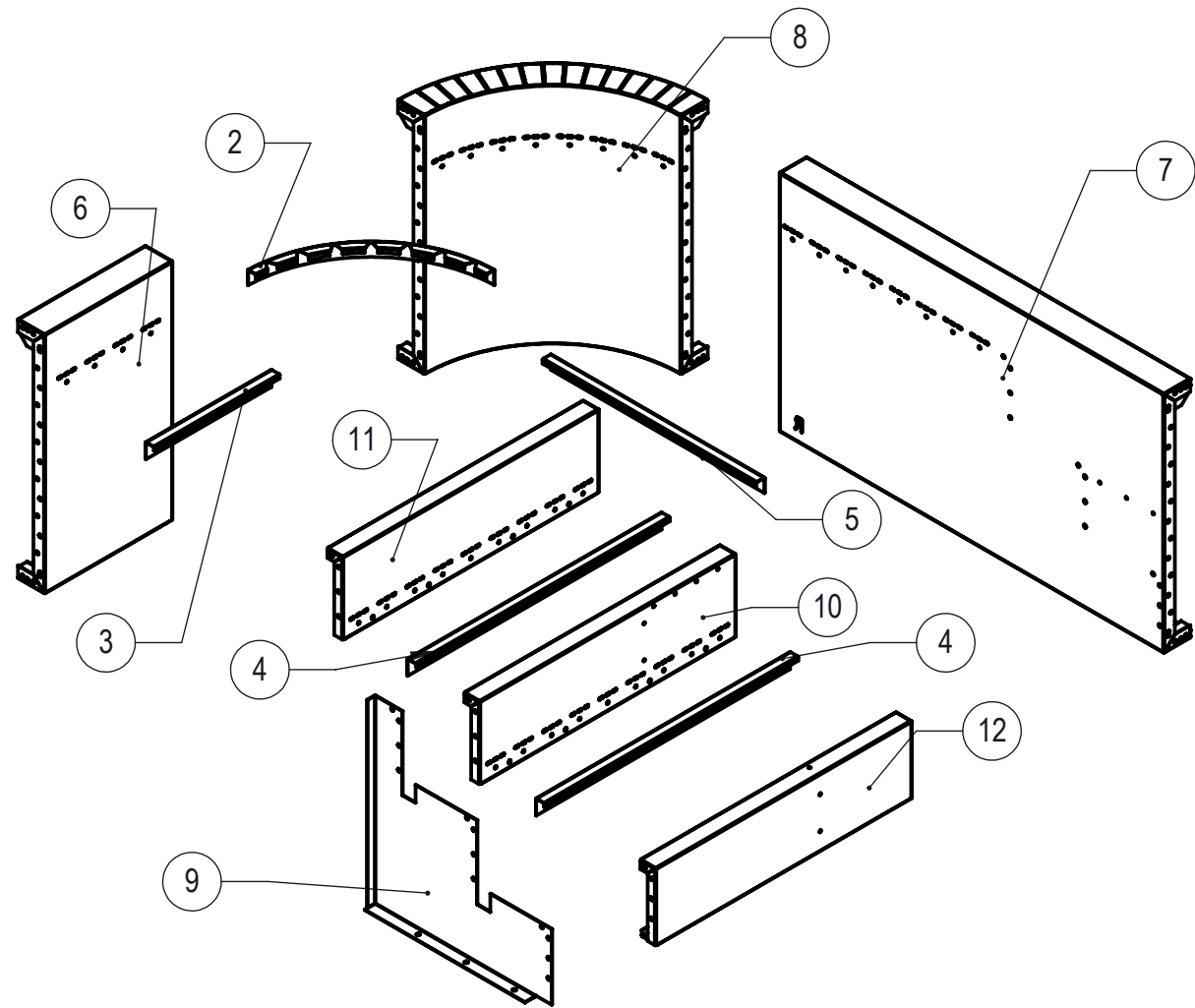
- ROUGH EXCAVATION SHOULD BE 2" DEEPER IN EACH INSTANCE.
- SOIL TO HAVE MINIMUM BEARING CAPACITY OF 1500 PSF.
- LOCATE TOP OF POOL AT LEAST 6" ABOVE THE SURROUNDING LAND ELEVATION.
- SEE "OVER DIG DETAIL" FOR EXCAVATION AROUND POOL.
- FILL VOIDS UNDER BASE OF PANELS AND TAMP WELL.
- BACK FILL WITH NON-EXPANSIVE MATERIAL.
- FOLLOW ALL CURRENT ANSI / APSP / ICC GUIDELINES FOR RESIDENTIAL POOLS

IMPORTANT NOTES:

THIS DOCUMENT IS FOR ILLUSTRATIVE PURPOSES ONLY. THE DEALER OR CONTRACTOR WHO SELLS OR INSTALLS YOUR POOL IS AN INDEPENDENT CONTRACTOR AND IS NOT AN AGENT OF THE MANUFACTURER. THE CONSTRUCTION METHODS ILLUSTRATED HERE ARE SUGGESTIONS AND APPLY ONLY TO NORMAL GROUND CONDITIONS. THERE MAY BE ADDITIONAL PRECAUTIONS AND/OR METHODS OF CONSTRUCTION. PROPER INSTALLATION IS THE RESPONSIBILITY OF THE DEALER/BUILDER/CONTRACTOR.

ITEM	FILE NAME	DESCRIPTION	CUSTOMER DRAWING #	VENDOR PART #	QTY.
1	00017128	STEP, 2' X 8', 3 TREAD, OPEN POUR, TANNING LEDGE, SUB ASSEMBLY	HSM17128	00017128	1
2	00017223	STEP, 4' X 8', 2' RADIUS, 3 TREAD, LEFT, OPEN POUR, TANNING LEDGE, SUB ASSEMBLY	HSM17223	00017223	1
3	00017164	STEP, 4' X 8', 2' RADIUS, 3 TREAD, RIGHT, OPEN POUR, TANNING LEDGE, SUB ASSEMBLY	HSM17164	00017164	1
4	00017119	STEP, 4' X 8', 3 TREAD, OPEN POUR, TANNING LEDGE, SUB ASSEMBLY	HSM17119	00017119	1

ENGINEERING DRAWING NUMBER 00017426	WEIGHT: lbs	UNLESS OTHERWISE SPECIFIED DIMENSIONS ARE IN INCHES TOLERANCES DECIMALS: X ± .1 XX ± .01 XXX ± .001 XXXX ± .0005 ANGULAR: X ± 0.5 THIRD ANGLE PROJECTION 	DESIGNED BY: BUMPHREY	CREATION DATE: 01/15/18	SAMSON STEEL	
	VOLUME: Inch³		DETAILED BY: MWILLIAMS	DETAILED DATE: 01/29/18		
	COLOR: NA		LAST REVISED BY: mwiliams	LAST REVISED DATE: 01/31/18	TITLE: STEP, 8' X 14', 2' RADIUS, 3 TREAD, OPEN POUR, TANNING LEDGE, ASSEMBLY	
	HEAT TREAT: NA		MATERIAL:			
	FINISH: NA				PART NUMBER: HSSM17426	SCALE: 1:32
	TEXTURE: 1671					SHEET: 1 OF 5
						SIZE: B



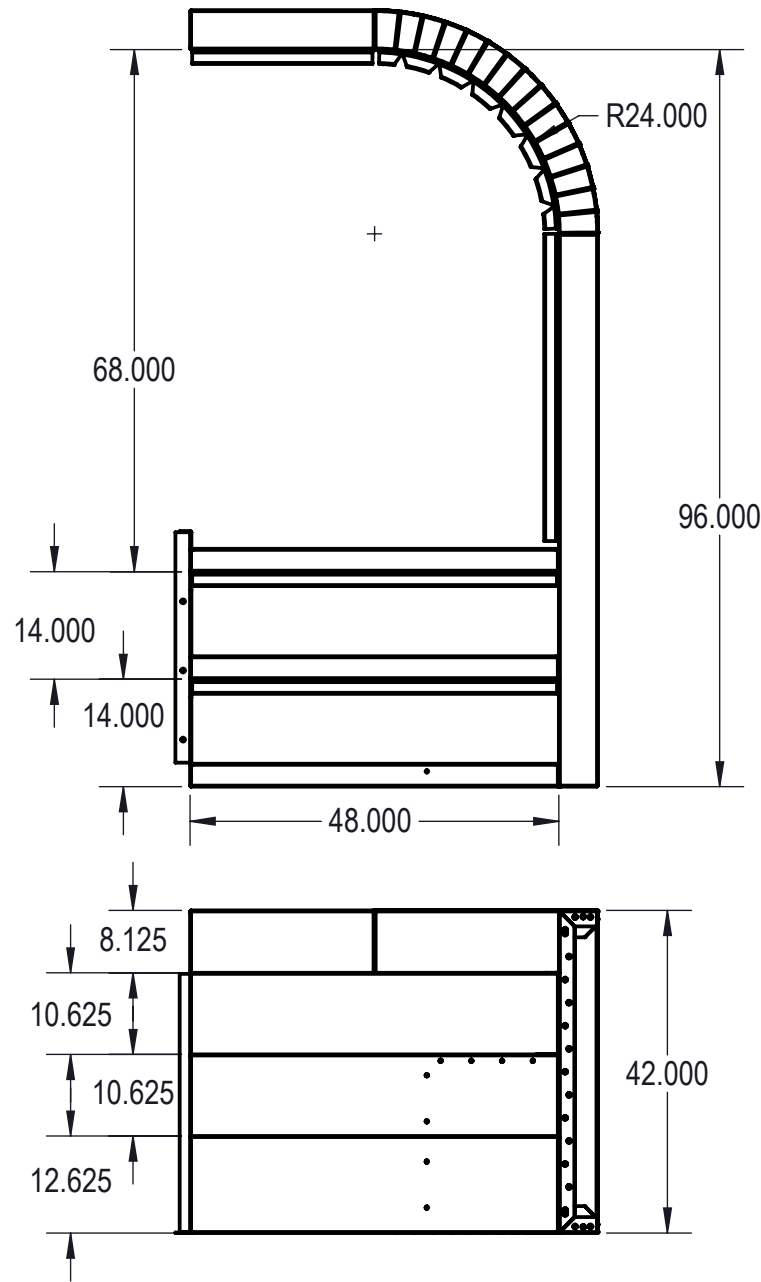
NOTES:

- THESE ARE FINISHED DIMENSIONS READY FOR THE LINER.
 - DIMENSIONS ARE FROM INSIDE POOL PANELS.
 - ROPE AND FLOAT ASSEMBLY SHOULD BE INSTALLED IN ACCORDANCE WITH CURRENT ANSI/ASPS/ICC REGULATIONS
 - HYDRA LINER TRACK FOR STEPS IS INSTALLED WITH THE BARB FACING THE RISER WALL ON THE STEP.
- EXCAVATION NOTES:
- ROUGH EXCAVATION SHOULD BE 2" DEEPER IN EACH INSTANCE.
 - SOIL TO HAVE MINIMUM BEARING CAPACITY OF 1500 PSF.
 - LOCATE TOP OF POOL AT LEAST 6" ABOVE THE SURROUNDING LAND ELEVATION.
 - SEE "OVER DIG DETAIL" FOR EXCAVATION AROUND POOL.
 - FILL VOIDS UNDER BASE OF PANELS AND TAMP WELL.
 - BACK FILL WITH NON-EXPANSIVE MATERIAL.
 - FOLLOW ALL CURRENT ANSI / APSP / ICC GUIDELINES FOR RESIDENTIAL POOLS

IMPORTANT NOTES:

THIS DOCUMENT IS FOR ILLUSTRATIVE PURPOSES ONLY. THE DEALER OR CONTRACTOR WHO SELLS OR INSTALLS YOUR POOL IS AN INDEPENDENT CONTRACTOR AND IS NOT AN AGENT OF THE MANUFACTURER. THE CONSTRUCTION METHODS ILLUSTRATED HERE ARE SUGGESTIONS AND APPLY ONLY TO NORMAL GROUND CONDITIONS. THERE MAY BE ADDITIONAL PRECAUTIONS AND/OR METHODS OF CONSTRUCTION. PROPER INSTALLATION IS THE RESPONSIBILITY OF THE DEALER/BUILDER/CONTRACTOR.

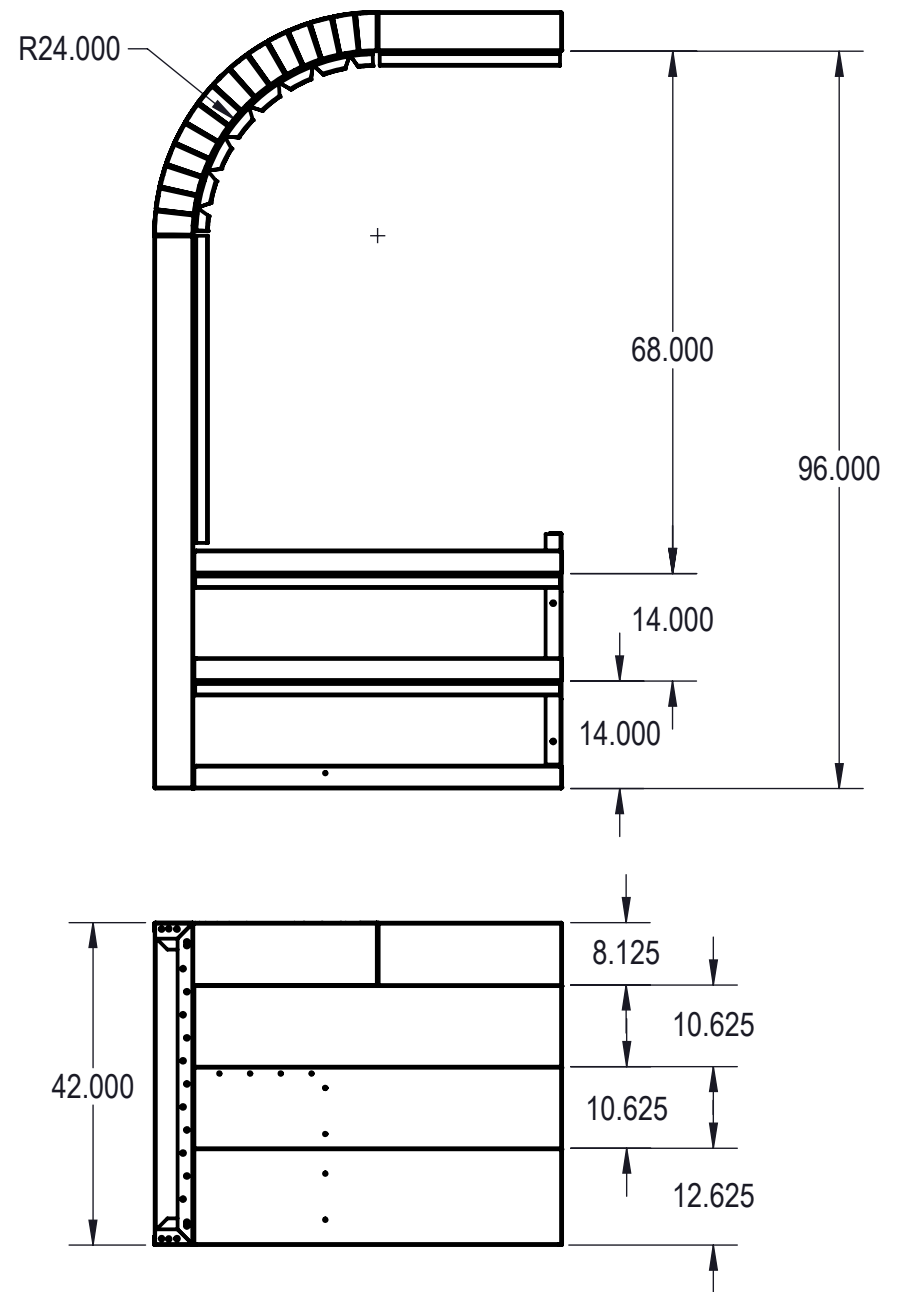
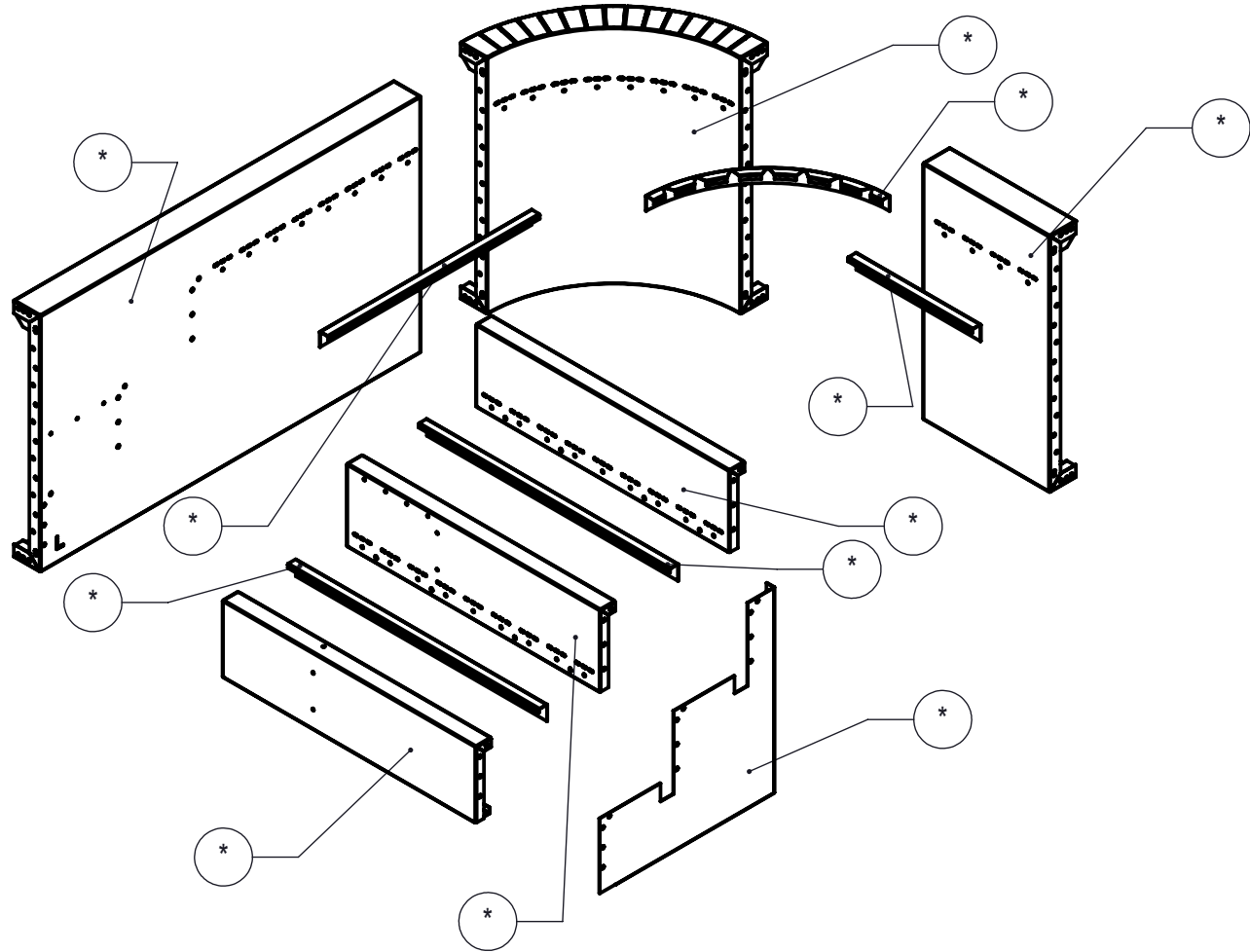
REVISION HISTORY				
REV.	DESCRIPTION	DATE	ECO	BY
A	RELEASED FOR PRODUCTION	01/22/18		MWILLIAMS



ITEM	FILE NAME	DESCRIPTION	CUSTOMER DRAWING #	VENDOR PART #	QTY.
1	BOLT, PACK	BOLT, FLANGE, 3/8-16 X 1", PACK (50)		HPS1916	2
2	00017208	LINER TRACK, 2' RADIUS, RIGHT OR LEFT	00017208	00017208	1
3	00017133	LINER TRACK, BACK	00017133	00017133	1
4	00017122	LINER TRACK, OPEN POUR	00017122	00017122	2
5	00017209	LINER TRACK, RIGHT OR LEFT	00017209	00017209	1
6	00017129	PANEL, BACK, 2' LONG, 3' TREAD, OPEN POUR, TANNING LEDGE	00017129	00017129	1
7	00017207	PANEL, STEP, 3' TREAD, BENCH, RIGHT SIDE, BENCH OPTION, ASSEMBLY	00017207	00017207	1
8	00017166	PANEL, 2' RADIUS, 3' TREAD, OPEN POUR, TANNING LEDGE, ASSEMBLY	00017166	00017166	1
9	00017118	SUPPORT, CENTER, 3' TREAD, OPEN POUR	00017118	00017118	1
10	00017136	TREAD, STEP, 3' TREAD, "C", BENCH OPTION, 4' LONG, RIGHT SIDE	00017136	00017136	1
11	00017123	TREAD, STEP, 3' TREAD, OPEN POUR, "B", 4'	00017123	00017123	1
12	00017138	TREAD, STEP, 3' TREAD, OPEN POUR, "D", 4' LONG, RIGHT SIDE	00017138	00017138	1
13	SBRACE	BRACE, FOLD OVER WITH TURNBUCKLE, STEEL, HPSFOB	HPSFOB	HPSFOB	1

ENGINEERING DRAWING NUMBER 00017164	WEIGHT: lbs	UNLESS OTHERWISE SPECIFIED DIMENSIONS ARE IN INCHES TOLERANCES DECIMALS: X ± .1 XX ± .01 XXX ± .001 XXXX ± .0005 ANGULAR: X ± 0.5 THIRD ANGLE PROJECTION 	DESIGNED BY: MWILLIAMS	CREATION DATE: 01/12/18	SAMSON STEEL	
	VOLUME: Inch³		DETAILED BY: MWILLIAMS	DETAILED DATE: 01/29/18		
	COLOR: NA		LAST REVISED BY: mwilliams	LAST REVISED DATE: 01/31/18	TITLE: STEP, 4' X 8', 2' RADIUS, 3 TREAD, RIGHT, OPEN POUR, TANNING LEDGE, SUB ASSEMBLY	
	HEAT TREAT: NA		MATERIAL:			
					PART NUMBER: HSM17164	SCALE: 1:32 SHEET: 2 OF 5
						SIZE: B

REVISION HISTORY				
REV.	DESCRIPTION	DATE	ECO	BY
A	RELEASED FOR PRODUCTION	01/29/18		MWILLIAMS



- NOTES:

1. THESE ARE FINISHED DIMENSIONS READY FOR THE LINER.
2. DIMENSIONS ARE FROM INSIDE POOL PANELS.
3. ROPE AND FLOAT ASSEMBLY SHOULD BE INSTALLED IN ACCORDANCE WITH CURRENT ANSI/SPS/ICC REGULATIONS
4. HYDRA LINER TRACK FOR STEPS IS INSTALLED WITH THE BARB FACING THE RISER WALL ON THE STEP.


EXCAVATION NOTES:

5. ROUGH EXCAVATION SHOULD BE 2" DEEPER IN EACH INSTANCE.
6. SOIL TO HAVE MINIMUM BEARING CAPACITY OF 1500 PSF.
7. LOCATE TOP OF POOL AT LEAST 6" ABOVE THE SURROUNDING LAND ELEVATION.
8. SEE "OVER DIG DETAIL" FOR EXCAVATION AROUND POOL.
9. FILL VOIDS UNDER BASE OF PANELS AND TAMP WELL.
10. BACK FILL WITH NON-EXPANSIVE MATERIAL.
11. FOLLOW ALL CURRENT ANSI / APSP / ICC GUIDELINES FOR RESIDENTIAL POOLS

IMPORTANT NOTES:

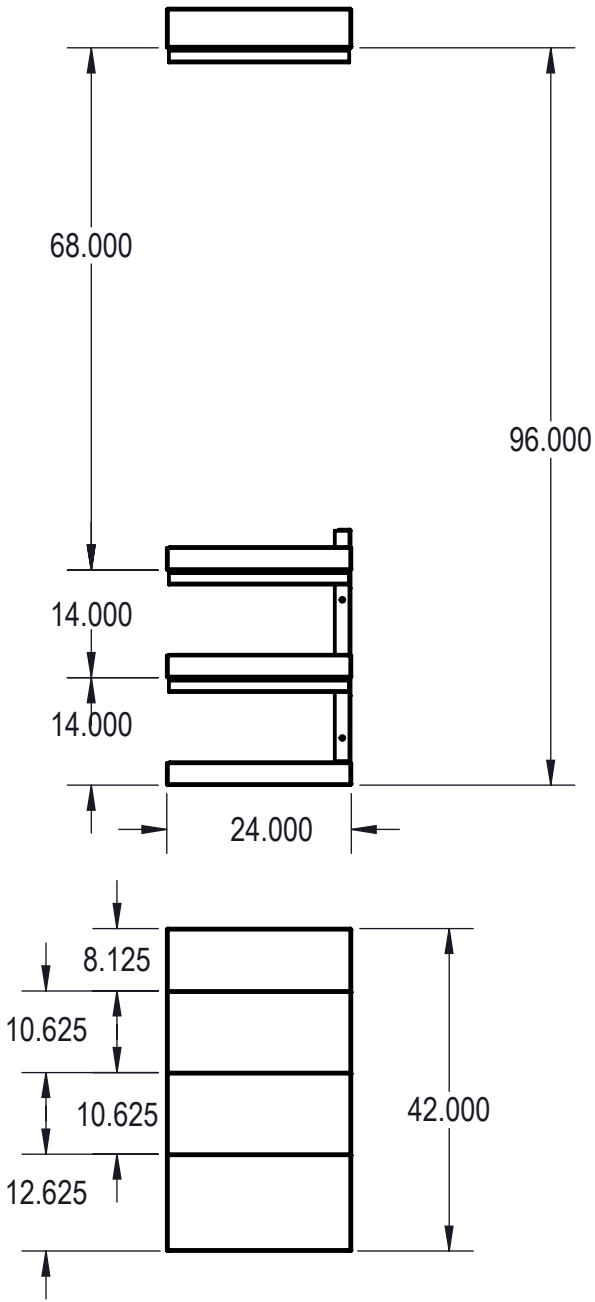
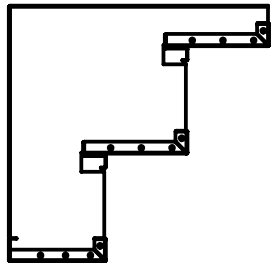
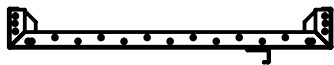
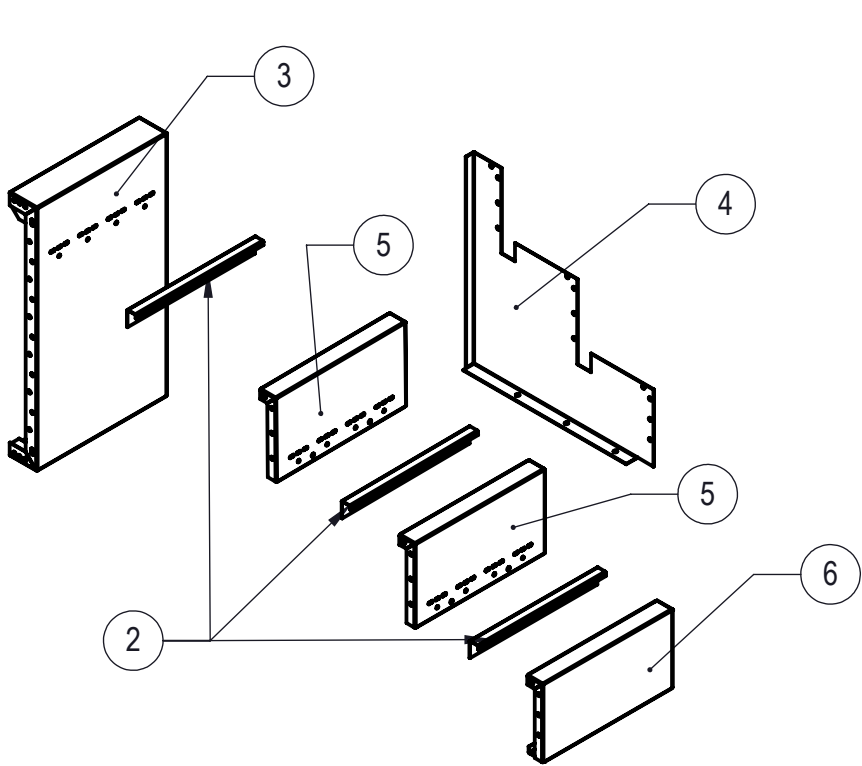
THIS DOCUMENT IS FOR ILLUSTRATIVE PURPOSES ONLY. THE DEALER OR CONTRACTOR WHO SELLS OR INSTALLS YOUR POOL IS AN INDEPENDENT CONTRACTOR AND IS NOT AN AGENT OF THE MANUFACTURER. THE CONSTRUCTION METHODS ILLUSTRATED HERE ARE SUGGESTIONS AND APPLY ONLY TO NORMAL GROUND CONDITIONS. THERE MAY BE ADDITIONAL PRECAUTIONS AND/OR METHODS OF CONSTRUCTION. PROPER INSTALLATION IS THE RESPONSIBILITY OF THE DEALER/BUILDER/CONTRACTOR.

ITEM	FILE NAME	DESCRIPTION	CUSTOMER DRAWING #	VENDOR PART #	QTY.
1	00017129	PANEL BACK, 2' LONG, 3 TREAD, OPEN POUR, TANNING LEDGE	00017129	00017129	1
2	00017166	PANEL, 2' RADIUS, 3 TREAD, OPEN POUR, TANNING LEDGE, ASSEMBLY	00017166	00017166	1
3	00017118	SUPPORT, CENTER, 3 TREAD, OPEN POUR	00017118	00017118	1
4	00017158	TREAD, STEP, 3 TREAD, "C", BENCH OPTION, 4' LONG, LEFT SIDE	00017158	00017158	1
5	00017208	LINER TRACK, 2' RADIUS, RIGHT OR LEFT	00017208	00017208	1
6	00017209	LINER TRACK, RIGHT OR LEFT	00017209	00017209	1
7	00017122	LINER TRACK, OPEN POUR	00017122	00017122	2
8	00017123	TREAD, STEP, 3 TREAD, OPEN POUR, "B", 4'	00017123	00017123	1
9	00017133	LINER TRACK, BACK	00017133	00017133	1
10	00017160	TREAD, STEP, 3 TREAD, OPEN POUR, "D", 4' LONG, LEFT SIDE	00017160	00017160	1
11	00017225	PANEL, STEP, 3 TREAD, BENCH, OPEN POUR, LEFT SIDE, BENCH OPTION, ASSEMBLY	00017225	00017225	1
12	BOLT, PACK	BOLT, FLANGE, 3/8-16 X 1", PACK (50)	HPS1916	HPS1916	2
13	SBRACE	BRACE, FOLD OVER WITH TURNBUCKLE. STEEL. HPSFOB	HPSFOB	HPSFOB	1

ENGINEERING DRAWING NUMBER 000017223	WEIGHT:		UNLESS OTHERWISE SPECIFIED DIMENSIONS ARE IN INCHES TOLERANCES DECIMALS: X ± .1 XX ± .01 XXX ± .001 XXXX ± .0005 ANGULAR: X ± 0.5 THIRD ANGLE PROJECTION 	DESIGNED BY:	CREATION DATE:	SAMSON STEEL TITLE: STEP, 4' X 8', 2' RADIUS, 3 TREAD, LEFT, OPEN POUR, TANNING LEDGE, SUB ASSEMBLY PART NUMBER: HSM17223	SCALE:	SIZE:	
	lbs	VOLUME:		MWILLIAMS	01/15/18		1:32	B	
	Inch³	COLOR:		DETAILED BY:	DETAILED DATE:				
	NA	HEAT TREAT:		MWILLIAMS	01/29/18				
	NA	FINISH:		LAST REVISED BY:	LAST REVISED DATE:				
	TEXTURE:	mwiliams		01/31/18					
	556			MATERIAL:					

REVISION HISTORY				
REV.	DESCRIPTION	DATE	ECO	BY
A	RELEASED FOR QUOTE	01/19/18		MWILLIAMS

JOB NUMBER: 17128
MADE FROM: 17128
CHECK IN DATE/TIME: Wednesday, January 31, 2018 12:05:58 PM



NOTES:

- THESE ARE FINISHED DIMENSIONS READY FOR THE LINER.
- DIMENSIONS ARE FROM INSIDE POOL PANELS.
- ROPE AND FLOAT ASSEMBLY SHOULD BE INSTALLED IN ACCORDANCE WITH CURRENT ANSI/APSP/ICC REGULATIONS
- HYDRA LINER TRACK FOR STEPS IS INSTALLED WITH THE BARB FACING THE RISER WALL ON THE STEP.

EXCAVATION NOTES:

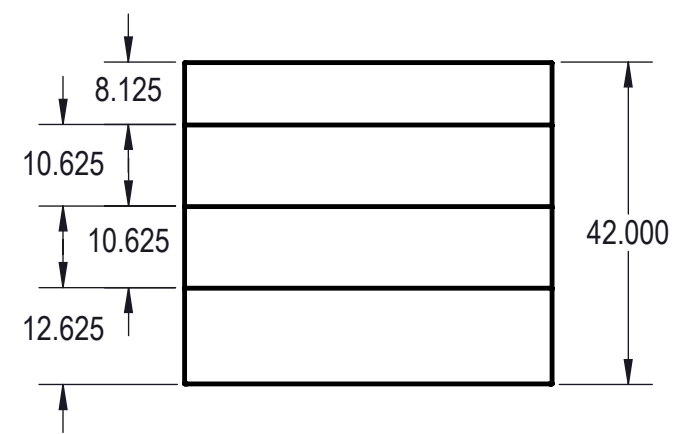
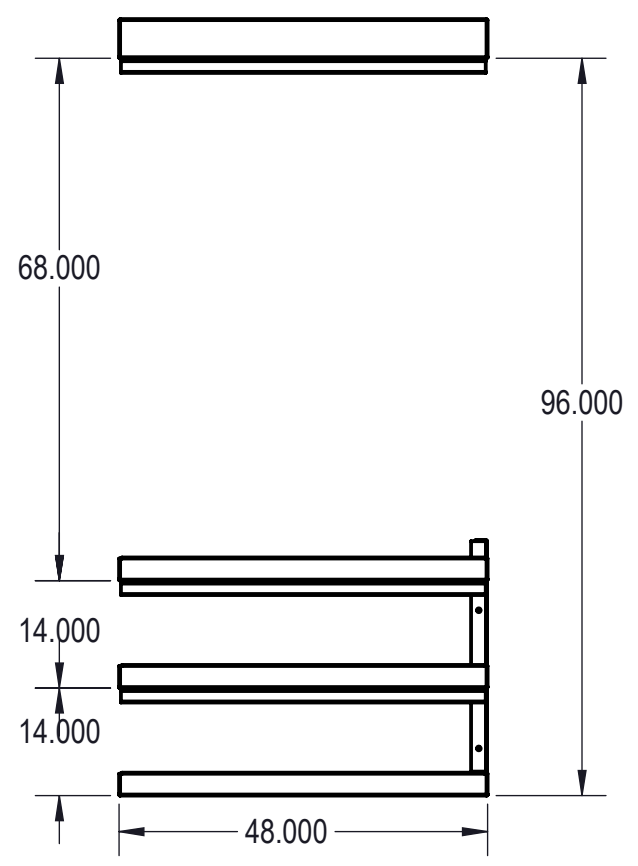
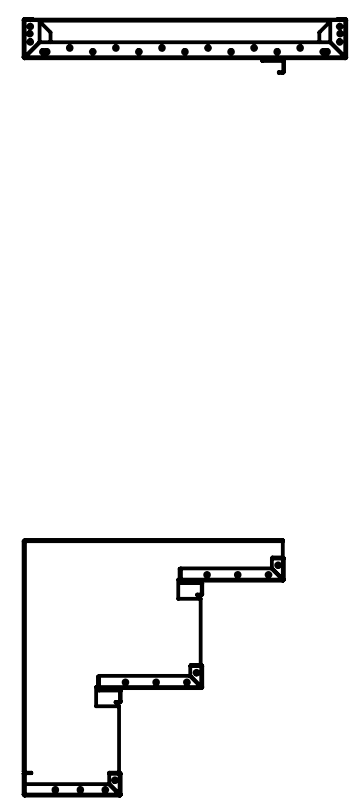
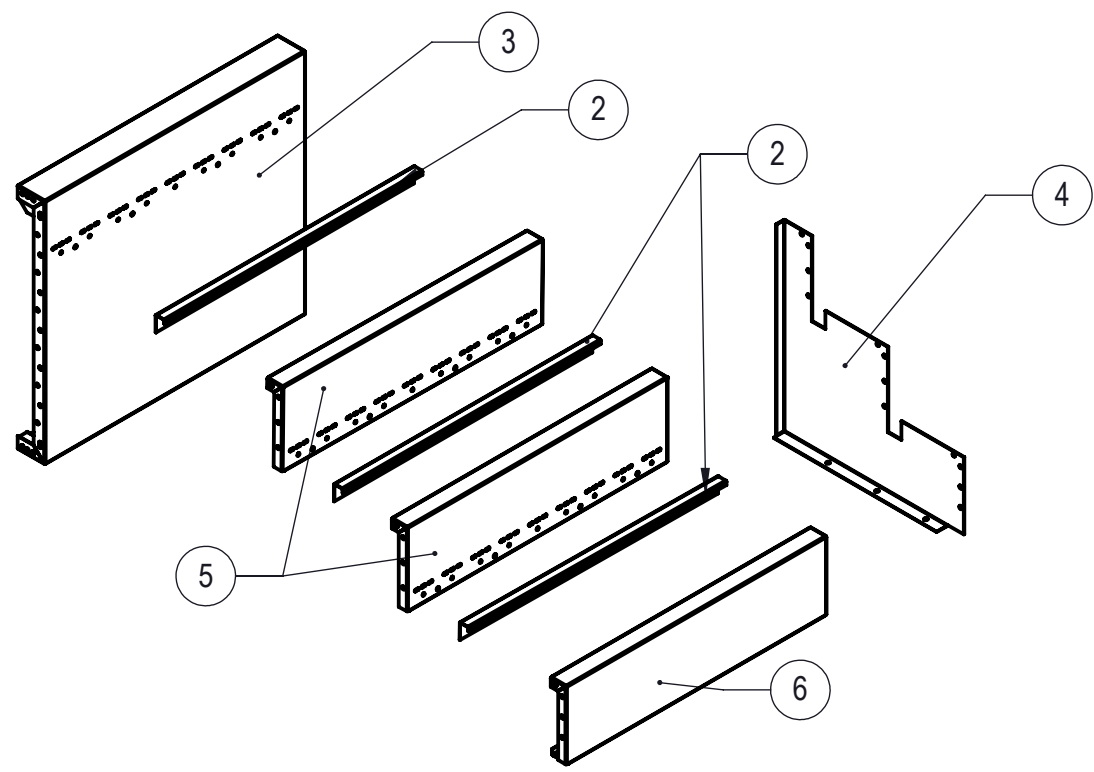
- ROUGH EXCAVATION SHOULD BE 2" DEEPER IN EACH INSTANCE.
- SOIL TO HAVE MINIMUM BEARING CAPACITY OF 1500 PSF.
- LOCATE TOP OF POOL AT LEAST 6" ABOVE THE SURROUNDING LAND ELEVATION.
- SEE "OVER DIG DETAIL" FOR EXCAVATION AROUND POOL.
- FILL VOIDS UNDER BASE OF PANELS AND TAMP WELL.
- BACK FILL WITH NON-EXPANSIVE MATERIAL.
- FOLLOW ALL CURRENT ANSI / APSP / ICC GUIDELINES FOR RESIDENTIAL POOLS

IMPORTANT NOTES:

THIS DOCUMENT IS FOR ILLUSTRATIVE PURPOSES ONLY. THE DEALER OR CONTRACTOR WHO SELLS OR INSTALLS YOUR POOL IS AN INDEPENDENT CONTRACTOR AND IS NOT AN AGENT OF THE MANUFACTURER. THE CONSTRUCTION METHODS ILLUSTRATED HERE ARE SUGGESTIONS AND APPLY ONLY TO NORMAL GROUND CONDITIONS. THERE MAY BE ADDITIONAL PRECAUTIONS AND/OR METHODS OF CONSTRUCTION. PROPER INSTALLATION IS THE RESPONSIBILITY OF THE DEALER/BUILDER/CONTRACTOR.

ITEM	FILE NAME	DESCRIPTION	CUSTOMER DRAWING #	VENDOR PART #	QTY.
1	BOLT, PACK	BOLT, FLANGE, 3/8-16 X 1", PACK (50)	HPS1916	HPS1916	1
2	00017133	LINER TRACK, BACK	00017133	00017133	3
3	00017129	PANEL BACK, 2' LONG, 3 TREAD, OPEN POUR, TANNING LEDGE	00017129	00017129	1
4	00017118	SUPPORT, CENTER, 3 TREAD, OPEN POUR	00017118	00017118	1
5	00017131	TREAD, STEP, 3 TREAD, OPEN POUR, "B", 2' LONG	00017131	00017131	2
6	00017132	TREAD, STEP, 3 TREAD, OPEN POUR, "D", 2' LONG	00017132	00017132	1
7	SBRACE	BRACE, FOLD OVER WITH TURNBUCKLE, STEEL, HPSFOB	HPSFOB	HPSFOB	1

ENGINEERING DRAWING NUMBER 00017128	WEIGHT: lbs	UNLESS OTHERWISE SPECIFIED DIMENSIONS ARE IN INCHES TOLERANCES DECIMALS: X ± .1 XX ± .01 XXX ± .001 XXXX ± .0005 ANGULAR: X ± 0.5 THIRD ANGLE PROJECTION 	DESIGNED BY: MWILLIAMS	CREATION DATE: 01/08/18	SAMSON STEEL	
	VOLUME: Inch ³		DETAILED BY: MWILLIAMS	DETAILED DATE: 01/29/18		
	COLOR: NA		LAST REVISED BY: mwiliams	LAST REVISED DATE: 01/31/18	TITLE: STEP, 2' X 8", 3 TREAD, OPEN POUR, TANNING LEDGE, SUB ASSEMBLY	
	HEAT TREAT: NA		MATERIAL:			
	FINISH: NA				PART NUMBER: HSM17128	
	TEXTURE: 192					
					SCALE: 1:32	SIZE: B
					SHEET: 4 OF 5	



NOTES:

- THESE ARE FINISHED DIMENSIONS READY FOR THE LINER.
- DIMENSIONS ARE FROM INSIDE POOL PANELS.
- ROPE AND FLOAT ASSEMBLY SHOULD BE INSTALLED IN ACCORDANCE WITH CURRENT ANSI/ASPS/ICC REGULATIONS
- HYDRA LINER TRACK FOR STEPS IS INSTALLED WITH THE BARB FACING THE RISER WALL ON THE STEP.

EXCAVATION NOTES:

- ROUGH EXCAVATION SHOULD BE 2" DEEPER IN EACH INSTANCE.
- SOIL TO HAVE MINIMUM BEARING CAPACITY OF 1500 PSF.
- LOCATE TOP OF POOL AT LEAST 6" ABOVE THE SURROUNDING LAND ELEVATION.
- SEE "OVER DIG DETAIL" FOR EXCAVATION AROUND POOL.
- FILL VOIDS UNDER BASE OF PANELS AND TAMP WELL.
- BACK FILL WITH NON-EXPANSIVE MATERIAL.
- FOLLOW ALL CURRENT ANSI / APSP / ICC GUIDELINES FOR RESIDENTIAL POOLS

IMPORTANT NOTES:

THIS DOCUMENT IS FOR ILLUSTRATIVE PURPOSES ONLY. THE DEALER OR CONTRACTOR WHO SELLS OR INSTALLS YOUR POOL IS AN INDEPENDENT CONTRACTOR AND IS NOT AN AGENT OF THE MANUFACTURER. THE CONSTRUCTION METHODS ILLUSTRATED HERE ARE SUGGESTIONS AND APPLY ONLY TO NORMAL GROUND CONDITIONS. THERE MAY BE ADDITIONAL PRECAUTIONS AND/OR METHODS OF CONSTRUCTION. PROPER INSTALLATION IS THE RESPONSIBILITY OF THE DEALER/BUILDER/CONTRACTOR.

ITEM	FILE NAME	DESCRIPTION	CUSTOMER DRAWING #	VENDOR PART #	QTY.
1	BOLT, PACK	BOLT, FLANGE, 3/8-16 X 1", PACK (50)	HPS1916	HPS1916	1
2	00017122	LINER TRACK, OPEN POUR	00017122	00017122	3
3	00017121	PANEL BACK, 4' LONG, 3' TREAD, OPEN POUR, TANNING LEDGE ASSEMBLY	00017121	00017121	1
4	00017118	SUPPORT, CENTER, 3' TREAD, OPEN POUR	00017118	00017118	1
5	00017123	TREAD, STEP, 3' TREAD, OPEN POUR, "B", 4'	00017123	00017123	2
6	00017124	TREAD, STEP, 3' TREAD, OPEN POUR, "D", 4' LONG	00017124	00017124	1
7	SBRACE	BRACE, FOLD OVER WITH TURNBUCKLE, STEEL, HPSFOB	HPSFOB	HPSFOB	1

ENGINEERING DRAWING NUMBER
00017119

WEIGHT: lbs
VOLUME: Inch³
COLOR: NA
HEAT TREAT: NA
FINISH: NA
TEXTURE: 384

UNLESS OTHERWISE SPECIFIED
DIMENSIONS ARE IN INCHES
TOLERANCES
DECIMALS: X ± .1
 XX ± .01
 XXX ± .001
 XXXX ± .0005
ANGULAR: X ± 0.5
THIRD ANGLE PROJECTION

DESIGNED BY: MWILLIAMS
DETAILED BY: MWILLIAMS
LAST REVISED BY: mwiliams
MATERIAL:

CREATION DATE: 01/05/18
DETAILED DATE: 01/29/18
LAST REVISED DATE: 01/31/18

SAMSON STEEL
TITLE: STEP, 4' X 8', 3 TREAD, OPEN POUR, TANNING LEDGE, SUB ASSEMBLY
PART NUMBER: HSM17119
SCALE: 1:32
SHEET: 5 OF 5
SIZE: B