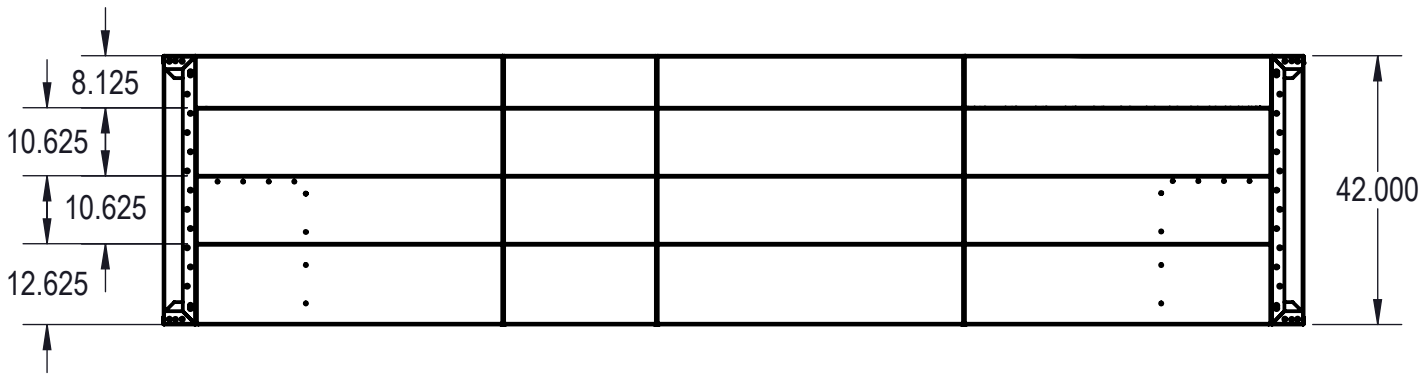
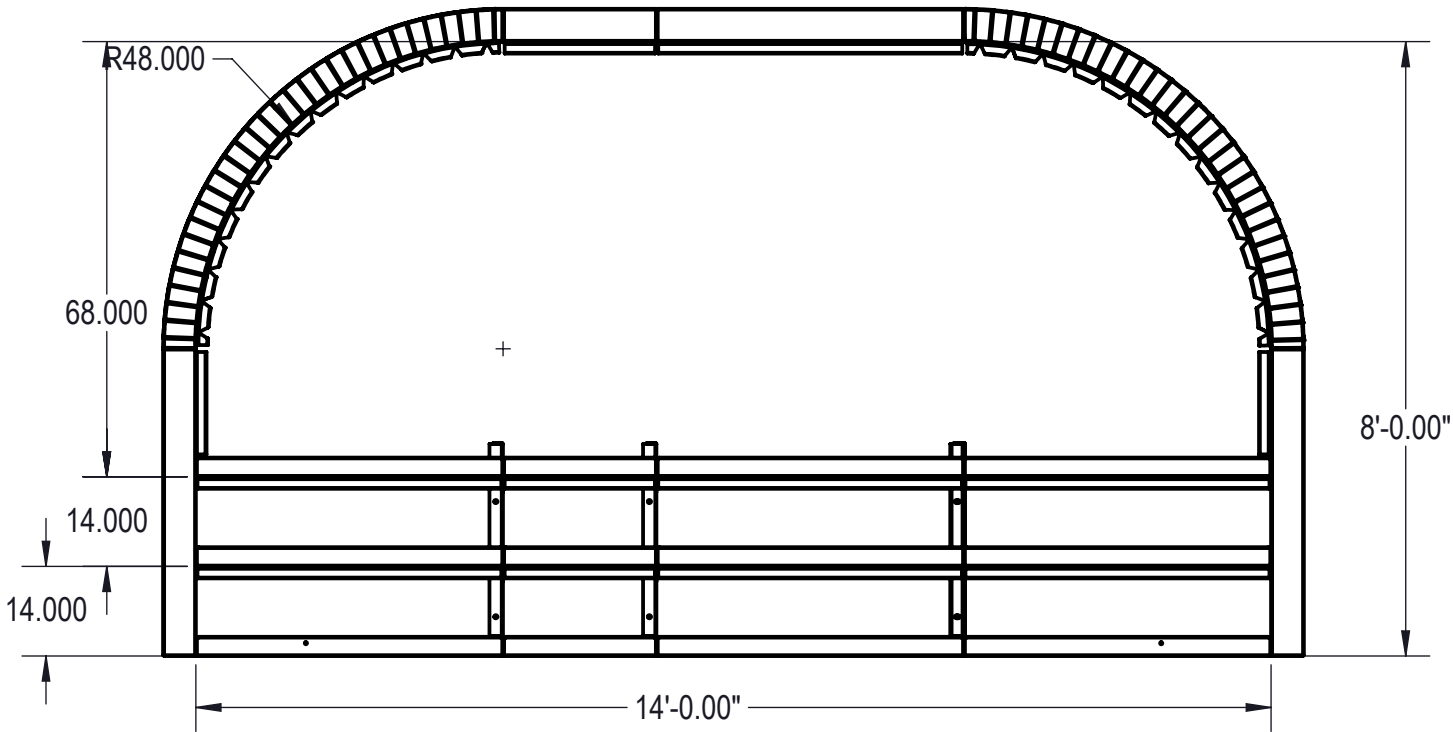
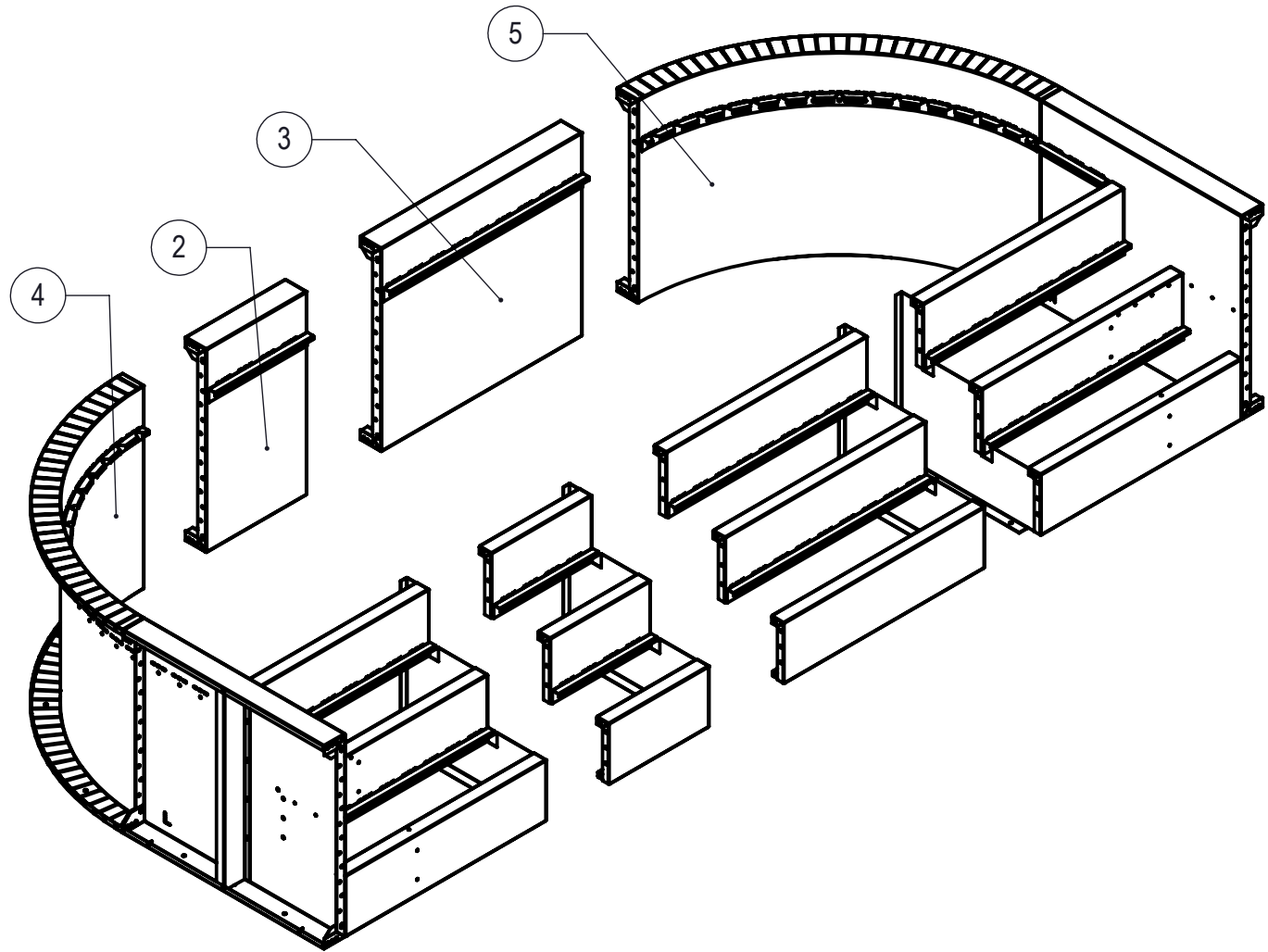


| REVISION HISTORY | | | | |
|------------------|-------------------------|----------|-----|-----------|
| REV. | DESCRIPTION | DATE | ECO | BY |
| A | RELEASED FOR PRODUCTION | 02/01/18 | | MWILLIAMS |



NOTES:

- THESE ARE FINISHED DIMENSIONS READY FOR THE LINER.
- DIMENSIONS ARE FROM INSIDE POOL PANELS.
- ROPE AND FLOAT ASSEMBLY SHOULD BE INSTALLED IN ACCORDANCE WITH CURRENT ANSI/ASPS/ICC REGULATIONS
- HYDRA LINER TRACK FOR STEPS IS INSTALLED WITH THE BARB FACING THE RISER WALL ON THE STEP.


EXCAVATION NOTES:

- ROUGH EXCAVATION SHOULD BE 2" DEEPER IN EACH INSTANCE.
- SOIL TO HAVE MINIMUM BEARING CAPACITY OF 1500 PSF.
- LOCATE TOP OF POOL AT LEAST 6" ABOVE THE SURROUNDING LAND ELEVATION.
- SEE "OVER DIG DETAIL" FOR EXCAVATION AROUND POOL.
- FILL VOIDS UNDER BASE OF PANELS AND TAMP WELL.
- BACK FILL WITH NON-EXPANSIVE MATERIAL.
- FOLLOW ALL CURRENT ANSI / APSP / ICC GUIDELINES FOR RESIDENTIAL POOLS

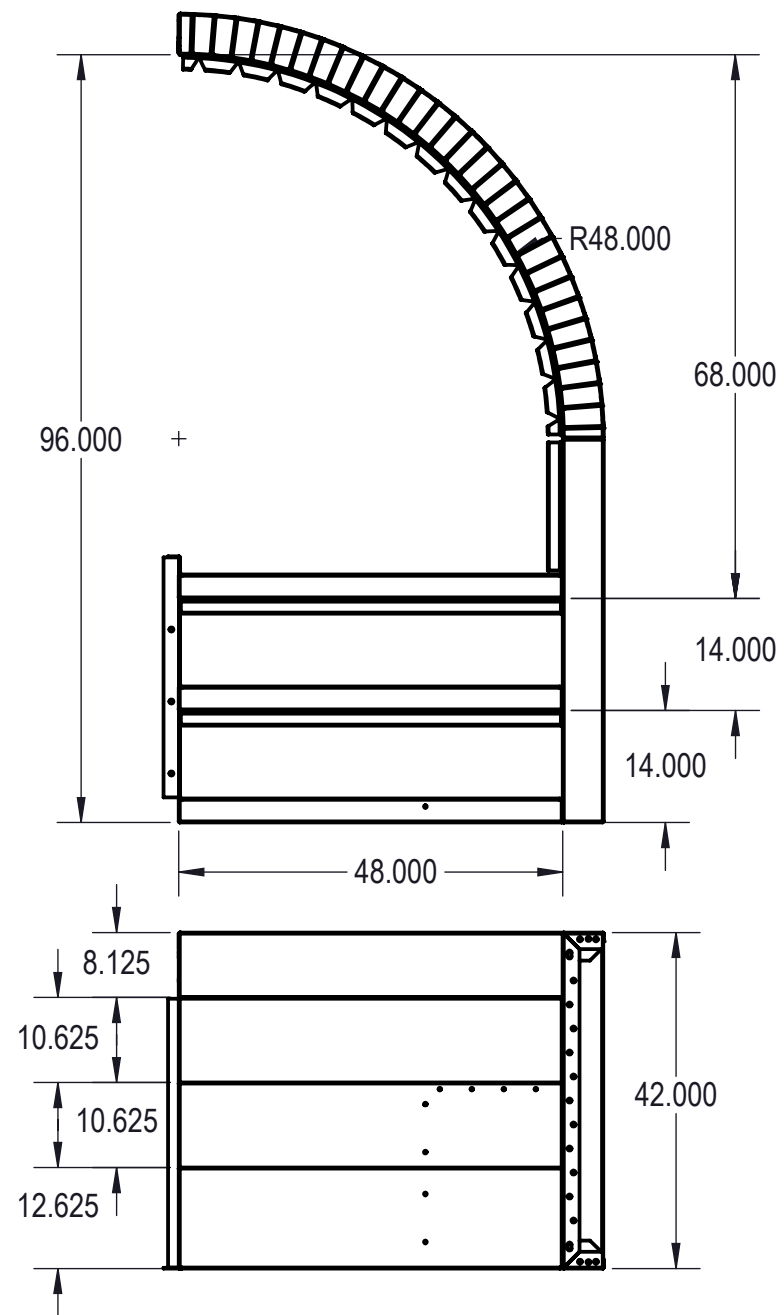
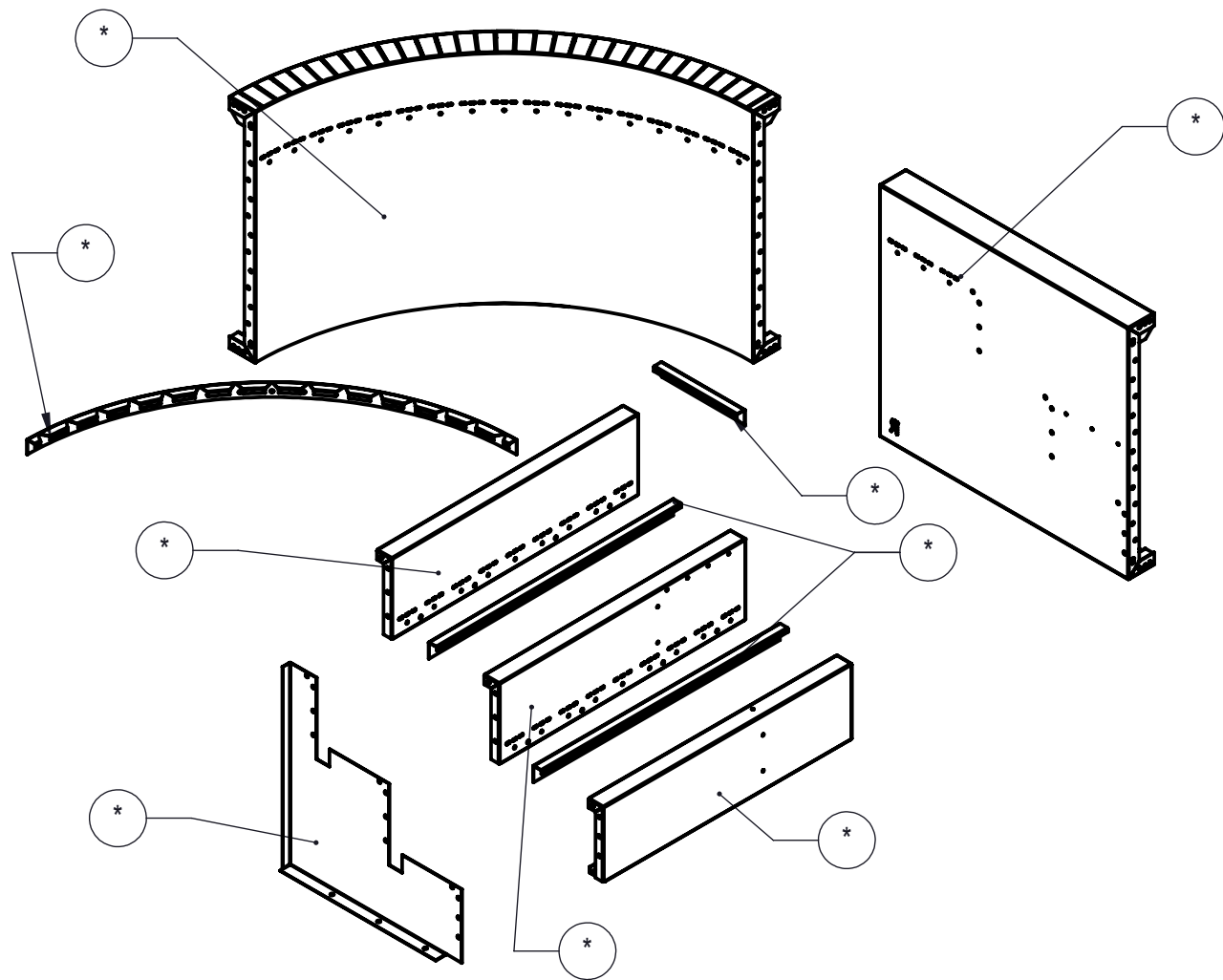
IMPORTANT NOTES:

THIS DOCUMENT IS FOR ILLUSTRATIVE PURPOSES ONLY. THE DEALER OR CONTRACTOR WHO SELLS OR INSTALLS YOUR POOL IS AN INDEPENDENT CONTRACTOR AND IS NOT AN AGENT OF THE MANUFACTURER. THE CONSTRUCTION METHODS ILLUSTRATED HERE ARE SUGGESTIONS AND APPLY ONLY TO NORMAL GROUND CONDITIONS. THERE MAY BE ADDITIONAL PRECAUTIONS AND/OR METHODS OF CONSTRUCTION. PROPER INSTALLATION IS THE RESPONSIBILITY OF THE DEALER/BUILDER/CONTRACTOR.

| ITEM | FILE NAME | DESCRIPTION | CUSTOMER DRAWING # | VENDOR PART # | QTY. |
|------|------------|--|--------------------|---------------|------|
| 1 | BOLT, PACK | BOLT, FLANGE, 3/8-16 X 1", PACK (50) | HPS1916 | HPS1916 | 2 |
| 2 | 00017128 | STEP, 2' X 8", 3 TREAD, OPEN POUR, TANNING LEDGE, SUB ASSEMBLY | HSM17128 | 00017128 | 1 |
| 3 | 00017119 | STEP, 4' X 8", 3 TREAD, OPEN POUR, TANNING LEDGE, SUB ASSEMBLY | HSM17119 | 00017119 | 1 |
| 4 | 00017267 | STEP, 4' X 8", 4' RADIUS, 3 TREAD, LEFT, OPEN POUR, TANNING LEDGE, SUB ASSEMBLY | HSM17267 | 00017267 | 1 |
| 5 | 00017228 | STEP, 4' X 8", 4' RADIUS, 3 TREAD, RIGHT, OPEN POUR, TANNING LEDGE, SUB ASSEMBLY | HSM17228 | 00017228 | 1 |

| | | | | | | | | | |
|--|-------------------|---|------------------------------|--------------------------------|---|---------------------------|--|------------------|------------|
| ENGINEERING DRAWING NUMBER 00017494 | WEIGHT: lbs | UNLESS OTHERWISE SPECIFIED DIMENSIONS ARE IN INCHES TOLERANCES DECIMALS: X ± .1 XX ± .01 XXX ± .001 XXXX ± .0005 ANGULAR: X ± 0.5 THIRD ANGLE PROJECTION  | DESIGNED BY: MWILLIAMS | CREATION DATE: 02/01/18 | SAMSON STEEL | | | | |
| | VOLUME: Inch³ | | DETAILED BY: MWILLIAMS | DETAILED DATE: 02/01/18 | | | | | |
| | COLOR: NA | | LAST REVISED BY: mwiliams | LAST REVISED DATE: 02/01/18 | TITLE: STEP, 8' X 14', 4' RADIUS, 3 TREAD, OPEN POUR, TANNING LEDGE, MODULAR | | | | |
| | HEAT TREAT: NA | | MATERIAL: | | | | | | |
| | FINISH: NA | | | | | PART NUMBER: HSSM17494 | | SCALE: 1:64 | SIZE: B |
| | TEXTURE: 1648 | | | | | | | SHEET: 1 OF 5 | |

| REVISION HISTORY | | | | |
|------------------|-------------------------|----------|-----|-----------|
| REV. | DESCRIPTION | DATE | ECO | BY |
| A | RELEASED FOR PRODUCTION | 01/30/18 | | MWILLIAMS |
| B | RELEASED FPR PRODUCTION | 01/31/18 | | MWILLIAMS |
| C | RELEASED FOR PRODUCTION | 02/01/18 | | MWILLIAMS |



NOTES:

1. THESE ARE FINISHED DIMENSIONS READY FOR THE LINER.
2. DIMENSIONS ARE FROM INSIDE POOL PANELS.
3. ROPE AND FLOAT ASSEMBLY SHOULD BE INSTALLED IN ACCORDANCE WITH CURRENT ANSI/SPS/ICC REGULATIONS
4. HYDRA LINER TRACK FOR STEPS IS INSTALLED WITH THE BARB FACING THE RISER WALL ON THE STEP.


EXCAVATION NOTES:

5. ROUGH EXCAVATION SHOULD BE 2" DEEPER IN EACH INSTANCE.
6. SOIL TO HAVE MINIMUM BEARING CAPACITY OF 1500 PSF.
7. LOCATE TOP OF POOL AT LEAST 6" ABOVE THE SURROUNDING LAND ELEVATION.
8. SEE "OVER DIG DETAIL" FOR EXCAVATION AROUND POOL.
9. FILL VOIDS UNDER BASE OF PANELS AND TAMP WELL.
10. BACK FILL WITH NON-EXPANSIVE MATERIAL.
11. FOLLOW ALL CURRENT ANSI / APSP / ICC GUIDELINES FOR RESIDENTIAL POOLS

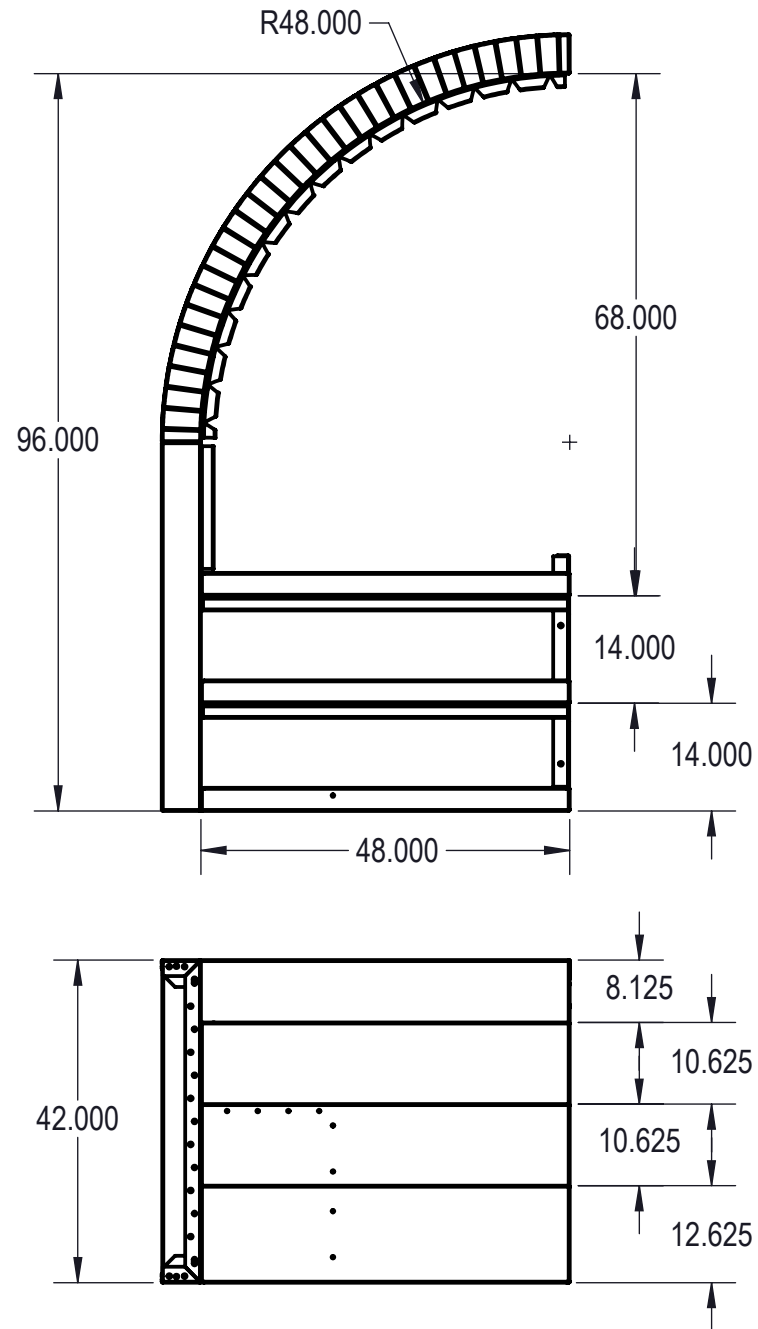
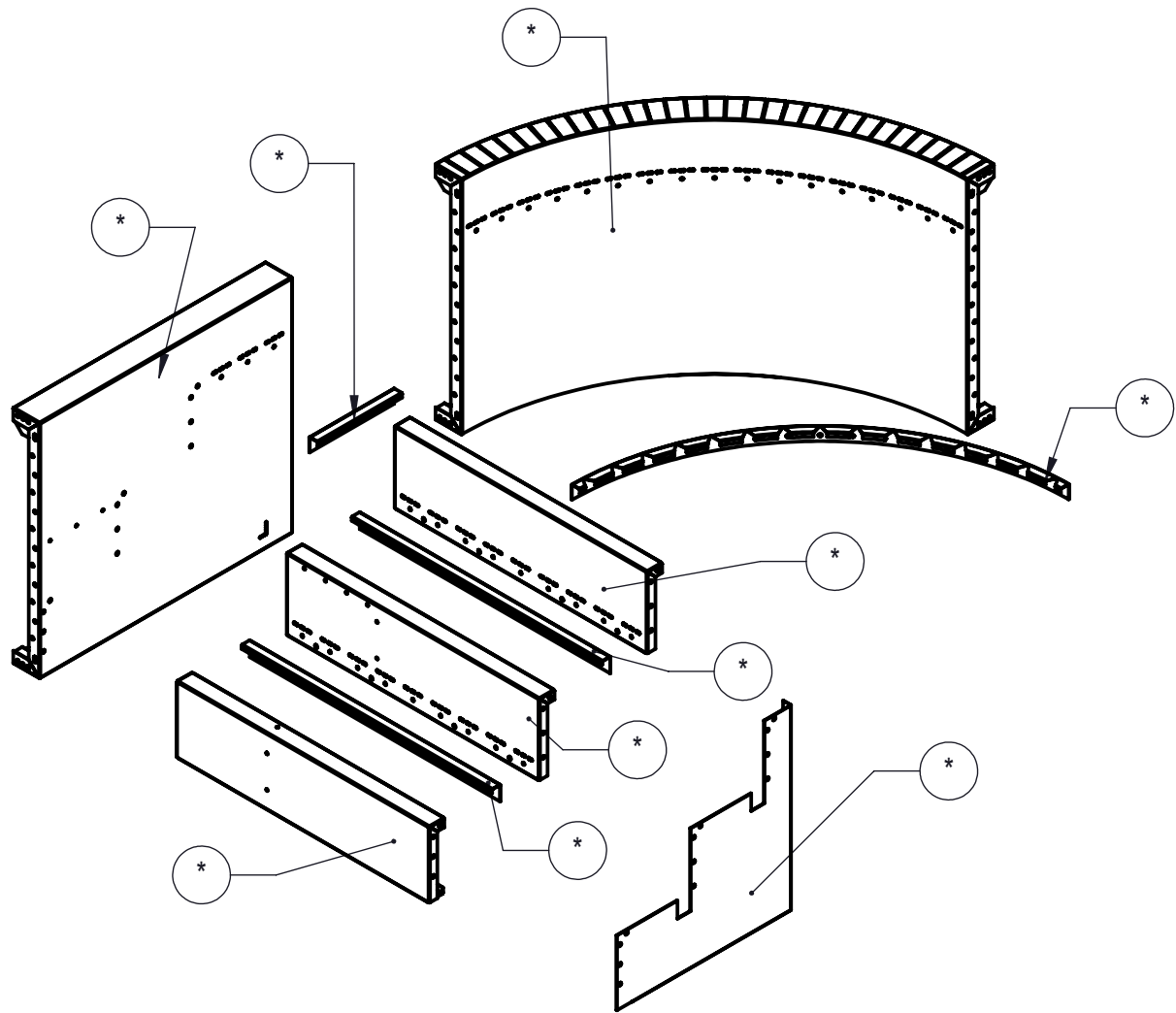
IMPORTANT NOTES:

THIS DOCUMENT IS FOR ILLUSTRATIVE PURPOSES ONLY. THE DEALER OR CONTRACTOR WHO SELLS OR INSTALLS YOUR POOL IS AN INDEPENDENT CONTRACTOR AND IS NOT AN AGENT OF THE MANUFACTURER. THE CONSTRUCTION METHODS ILLUSTRATED HERE ARE SUGGESTIONS AND APPLY ONLY TO NORMAL GROUND CONDITIONS. THERE MAY BE ADDITIONAL PRECAUTIONS AND/OR METHODS OF CONSTRUCTION. PROPER INSTALLATION IS THE RESPONSIBILITY OF THE DEALER/BUILDER/CONTRACTOR.

| ITEM | FILE NAME | DESCRIPTION | CUSTOMER DRAWING # | VENDOR PART # | QTY |
|------|------------|--|--------------------|---------------|-----|
| 1 | BOLT, PACK | BOLT, FLANGE, 3/8-16 X 1", PACK (50) | HPS1916 | HPS1916 | 2 |
| 2 | SBRACE | BRACE, FOLD OVER WITH TURNBUCKLE, STEEL, HPSFOB | HPSFOB | HPSFOB | 1 |
| 3 | 00017122 | LINER TRACK, OPEN POUR | 00017122 | 00017122 | 2 |
| 4 | 00017230 | LINER TRACK, RIGHT OR LEFT | 00017230 | 00017230 | 1 |
| 5 | 00017235 | LINER TRACK, RIGHT OR LEFT | 00017235 | 00017235 | 1 |
| 6 | 00017233 | PANEL, STEP, 3 TREAD, BENCH, RIGHT SIDE, BENCH OPTION | 00017233 | 00017233 | 1 |
| 7 | 00017229 | PANEL, 4" RADIUS, 3 TREAD, OPEN POUR, TANNING LEDGE ASSEMBLY | 00017229 | 00017229 | 1 |
| 8 | 00017118 | SUPPORT, CENTER, 3 TREAD, OPEN POUR | 00017118 | 00017118 | 1 |
| 9 | 00017136 | TREAD, STEP, 3 TREAD, "C", BENCH OPTION, 4' LONG, RIGHT SIDE | 00017136 | 00017136 | 1 |
| 10 | 00017123 | TREAD, STEP, 3 TREAD, OPEN POUR, "B", 4' | 00017123 | 00017123 | 1 |
| 11 | 00017138 | TREAD, STEP, 3 TREAD, OPEN POUR, "D", 4' LONG, RIGHT SIDE | 00017138 | 00017138 | 1 |

| | | | | | | | | | |
|---|-------------|--|---|------------------|--------------------|------------------------------|--|----------------|------------|
| ENGINEERING DRAWING NUMBER 000017228 | WEIGHT: | | UNLESS OTHERWISE SPECIFIED DIMENSIONS ARE IN INCHES TOLERANCES DECIMALS: X ± .1 XX ± .01 XXX ± .001 XXXX ± .0005 ANGULAR: X ± 0.5 THIRD ANGLE PROJECTION  | DESIGNED BY: | CREATION DATE: | SAMSON STEEL | TITLE: STEP, 4' X 8', 4' RADIUS, 3 TREAD, RIGHT, OPEN POUR, TANNING LEDGE, SUB ASSEMBLY | SCALE: 1:32 | SIZE: B |
| | lbs | | | MWILLIAMS | 01/15/18 | | | | |
| | VOLUME: | | | DETAILED BY: | DETAILED DATE: | | | | |
| | Inch³ | | | MWILLIAMS | 02/01/18 | | | | |
| | COLOR: | | | LAST REVISED BY: | LAST REVISED DATE: | PART NUMBER: HSM17228 | SHEET: 2 OF 5 | | |
| | NA | | | mwiliams | 02/01/18 | | | | |
| | HEAT TREAT: | | | MATERIAL: | | | | | |
| | FINISH: | | | | | | | | |
| TEXTURE: | | | | | | | | | |
| 536 | | | | | | | | | |

| REVISION HISTORY | | | | |
|------------------|-------------------------|----------|-----|-----------|
| REV. | DESCRIPTION | DATE | ECO | BY |
| A | RELEASED FOR PRODUCTION | 01/30/18 | | MWILLIAMS |
| B | RELEASED FOR PRODUCTION | 02/01/18 | | MWILLIAMS |



NOTES:

1. THESE ARE FINISHED DIMENSIONS READY FOR THE LINER.
2. DIMENSIONS ARE FROM INSIDE POOL PANELS.
3. ROPE AND FLOAT ASSEMBLY SHOULD BE INSTALLED IN ACCORDANCE WITH CURRENT ANSI/SPS/ICC REGULATIONS
4. HYDRA LINER TRACK FOR STEPS IS INSTALLED WITH THE BARB FACING THE RISER WALL ON THE STEP.


EXCAVATION NOTES:

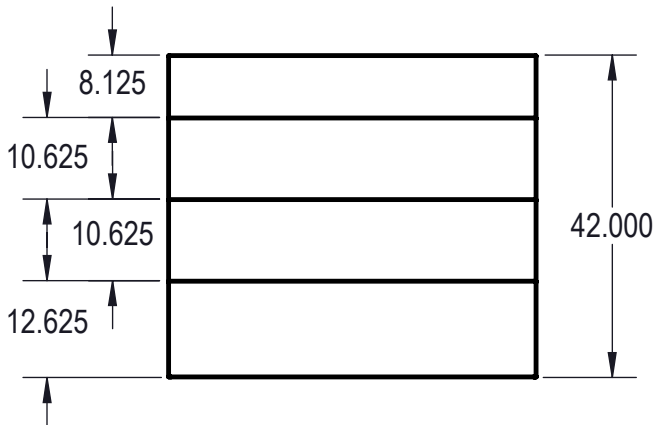
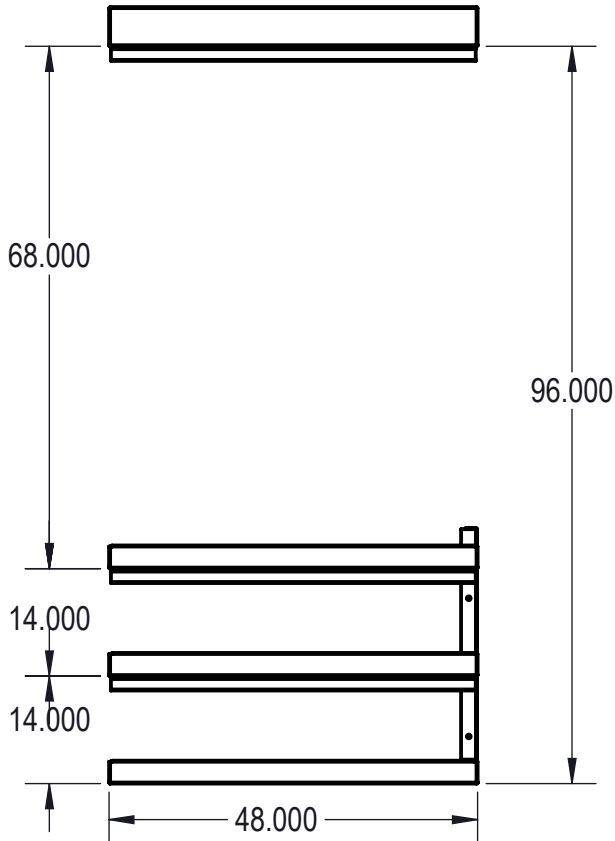
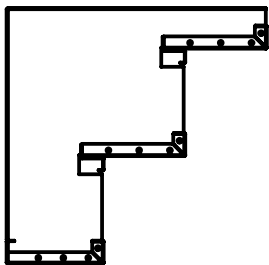
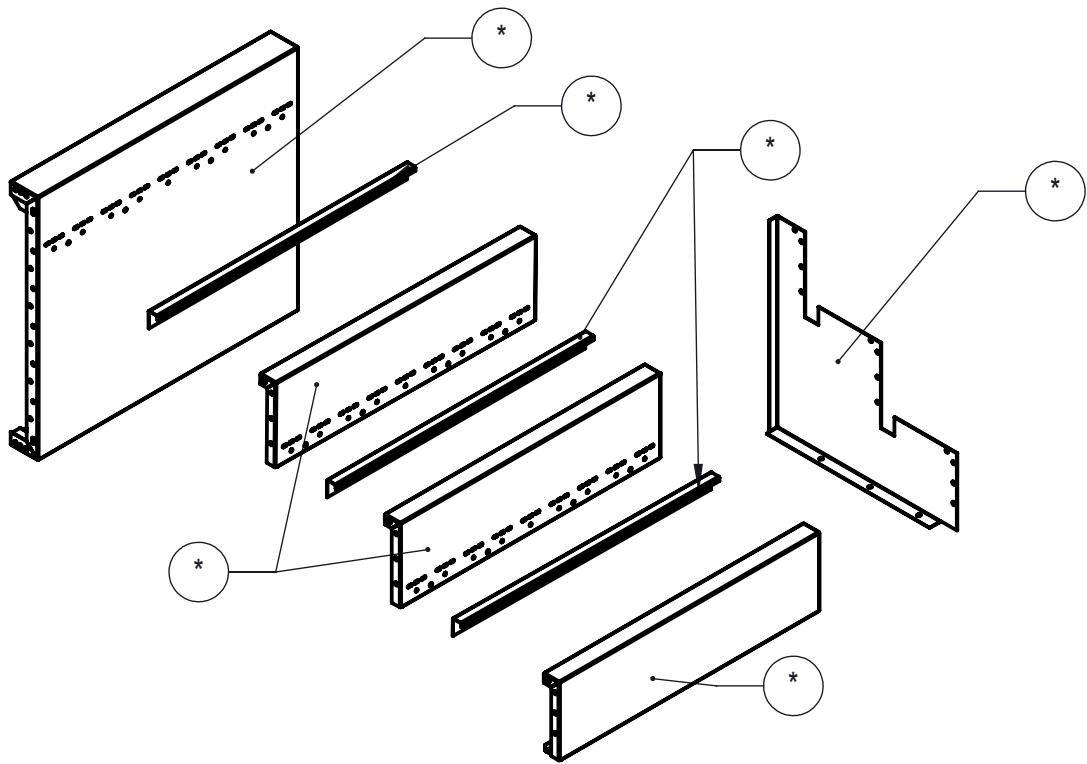
5. ROUGH EXCAVATION SHOULD BE 2" DEEPER IN EACH INSTANCE.
6. SOIL TO HAVE MINIMUM BEARING CAPACITY OF 1500 PSF.
7. LOCATE TOP OF POOL AT LEAST 6" ABOVE THE SURROUNDING LAND ELEVATION.
8. SEE "OVER DIG DETAIL" FOR EXCAVATION AROUND POOL.
9. FILL VOIDS UNDER BASE OF PANELS AND TAMP WELL.
10. BACK FILL WITH NON-EXPANSIVE MATERIAL.
11. FOLLOW ALL CURRENT ANSI / APSP / ICC GUIDELINES FOR RESIDENTIAL POOLS

IMPORTANT NOTES:

THIS DOCUMENT IS FOR ILLUSTRATIVE PURPOSES ONLY. THE DEALER OR CONTRACTOR WHO SELLS OR INSTALLS YOUR POOL IS AN INDEPENDENT CONTRACTOR AND IS NOT AN AGENT OF THE MANUFACTURER. THE CONSTRUCTION METHODS ILLUSTRATED HERE ARE SUGGESTIONS AND APPLY ONLY TO NORMAL GROUND CONDITIONS. THERE MAY BE ADDITIONAL PRECAUTIONS AND/OR METHODS OF CONSTRUCTION. PROPER INSTALLATION IS THE RESPONSIBILITY OF THE DEALER/BUILDER/CONTRACTOR.

| ITEM | FILE NAME | DESCRIPTION | CUSTOMER DRAWING # | VENDOR PART # | QTY. |
|------|------------|--|--------------------|---------------|------|
| 1 | BOLT, PACK | BOLT, FLANGE, 3/8-16 X 1", PACK (50) | HPS1916 | HPS1916 | 2 |
| 2 | SBRACE | BRACE, FOLD OVER WITH TURNBUCKLE, STEEL, HPSFOB | HPSFOB | HPSFOB | 1 |
| 3 | 00017122 | LINER TRACK, OPEN POUR | 00017122 | 00017122 | 2 |
| 4 | 00017235 | LINER TRACK, RIGHT OR LEFT | 00017235 | 00017235 | 1 |
| 5 | 00017230 | LINER TRACK, RIGHT OR LEFT | 00017230 | 00017230 | 1 |
| 6 | 00017268 | PANEL, STEP, 3 TREAD, BENCH, LEFT SIDE, BENCH OPTION, ASSEMBLY | 00017268 | 00017268 | 1 |
| 7 | 00017229 | PANEL, 4 RADIUS, 3 TREAD, OPEN POUR, TANNING EDGE, ASSEMBLY | 00017229 | 00017229 | 1 |
| 8 | 00017118 | SUPPORT, CENTER, 3 TREAD, OPEN POUR | 00017118 | 00017118 | 1 |
| 9 | 00017158 | TREAD, STEP, 3 TREAD, "C", BENCH OPTION, 4' LONG, LEFT SIDE | 00017158 | 00017158 | 1 |
| 10 | 00017123 | TREAD, STEP, 3 TREAD, OPEN POUR, "B", 4' | 00017123 | 00017123 | 1 |
| 11 | 00017160 | TREAD, STEP, 3 TREAD, OPEN POUR, "D", 4' LONG, LEFT SIDE | 00017160 | 00017160 | 1 |

| | | | | | | | | | |
|--|-------------|--|--------------|----------------|---------------------|--------------------|---|--------|-------|
| ENGINEERING DRAWING NUMBER: 00017267 | WEIGHT: | UNLESS OTHERWISE SPECIFIED DIMENSIONS ARE IN INCHES TOLERANCES DECIMALS: X ± .1 XX ± .01 XXX ± .001 XXXX ± .0005 ANGULAR: X ± 0.5 THIRD ANGLE PROJECTION  | DESIGNED BY: | CREATION DATE: | SAMSON STEEL | | | | |
| | lbs | | MWILLIAMS | 01/18/18 | | | | | |
| | VOLUME: | | | | DETAILED BY: | DETAILED DATE: | TITLE: STEP, 4' X 8', 4' RADIUS, 3 TREAD, LEFT, OPEN POUR, TANNING LEDGE, SUB ASSEMBLY | | |
| | Inch³ | | | | MWILLIAMS | 02/01/18 | | | |
| | COLOR: | | | | LAST REVISED BY: | LAST REVISED DATE: | | | |
| | NA | | | | mwiliams | 02/01/18 | | | |
| | HEAT TREAT: | | | | MATERIAL: | | PART NUMBER: HSM17267 | SCALE: | SIZE: |
| | NA | | | | | | | 1:48 | |
| FINISH: | | | | SHEET: | | | | B | |
| TEXTURE: | | | | 3 OF 5 | | | | | |
| 536 | | | | | | | | | |



NOTES:

- THESE ARE FINISHED DIMENSIONS READY FOR THE LINER.
- DIMENSIONS ARE FROM INSIDE POOL PANELS.
- ROPE AND FLOAT ASSEMBLY SHOULD BE INSTALLED IN ACCORDANCE WITH CURRENT ANSI/ASPS/ICC REGULATIONS
- HYDRA LINER TRACK FOR STEPS IS INSTALLED WITH THE BARB FACING THE RISER WALL ON THE STEP.

EXCAVATION NOTES:

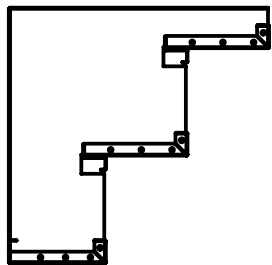
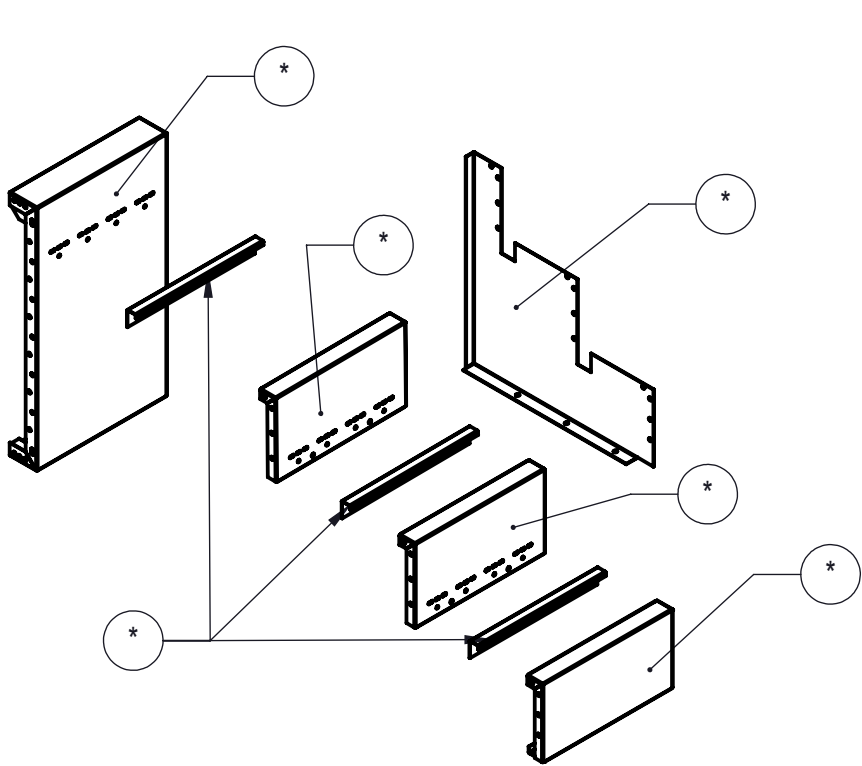
- ROUGH EXCAVATION SHOULD BE 2" DEEPER IN EACH INSTANCE.
- SOIL TO HAVE MINIMUM BEARING CAPACITY OF 1500 PSF.
- LOCATE TOP OF POOL AT LEAST 6" ABOVE THE SURROUNDING LAND ELEVATION.
- SEE "OVER DIG DETAIL" FOR EXCAVATION AROUND POOL.
- FILL VOIDS UNDER BASE OF PANELS AND TAMP WELL.
- BACK FILL WITH NON-EXPANSIVE MATERIAL.
- FOLLOW ALL CURRENT ANSI / APSP / ICC GUIDELINES FOR RESIDENTIAL POOLS

IMPORTANT NOTES:

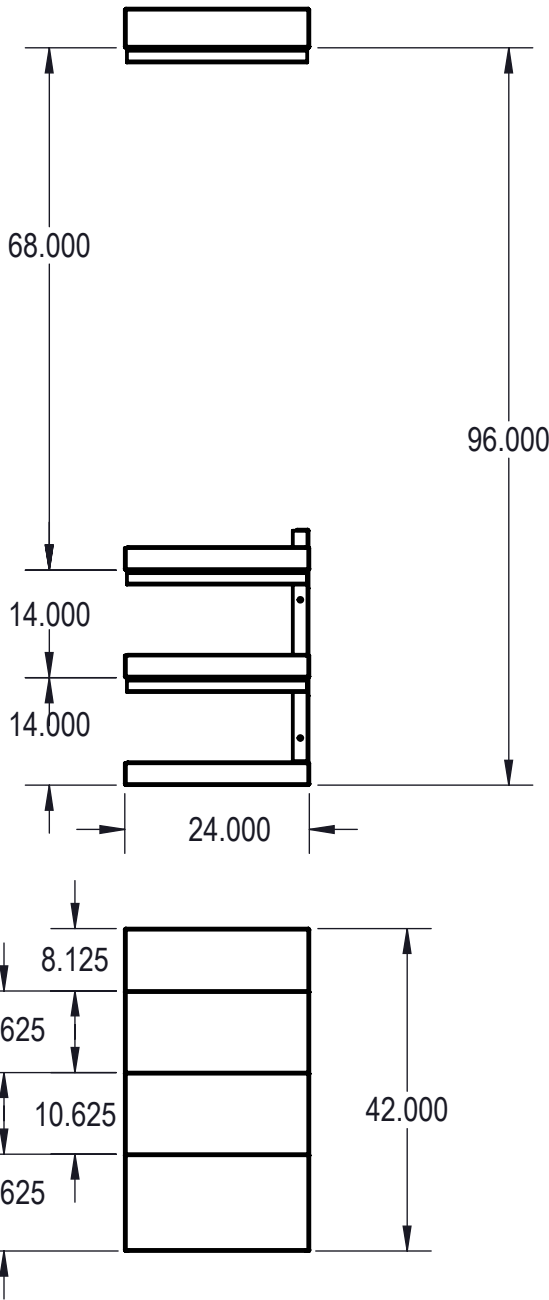
THIS DOCUMENT IS FOR ILLUSTRATIVE PURPOSES ONLY. THE DEALER OR CONTRACTOR WHO SELLS OR INSTALLS YOUR POOL IS AN INDEPENDENT CONTRACTOR AND IS NOT AN AGENT OF THE MANUFACTURER. THE CONSTRUCTION METHODS ILLUSTRATED HERE ARE SUGGESTIONS AND APPLY ONLY TO NORMAL GROUND CONDITIONS. THERE MAY BE ADDITIONAL PRECAUTIONS AND/OR METHODS OF CONSTRUCTION. PROPER INSTALLATION IS THE RESPONSIBILITY OF THE DEALER/BUILDER/CONTRACTOR.

| ITEM | FILE NAME | DESCRIPTION | CUSTOMER DRAWING # | VENDOR PART # | QTY. |
|------|------------|---|--------------------|---------------|------|
| 1 | BOLT, PACK | BOLT, FLANGE, 3/8-16 X 1", PACK (50) | HPS1916 | HPS1916 | 1 |
| 2 | SBRACE | BRACE, FOLD OVER WITH TURNBUCKLE, STEEL, HPSFOB | HPSFOB | HPSFOB | 1 |
| 3 | 00017122 | LINER TRACK, OPEN POUR | 00017122 | 00017122 | 3 |
| 4 | 00017121 | PANEL BACK, 4' LONG, 3 TREAD, OPEN POUR, TANNING LEDGE ASSEMBLY | 00017121 | 00017121 | 1 |
| 5 | 00017118 | SUPPORT, CENTER, 3 TREAD, OPEN POUR | 00017118 | 00017118 | 1 |
| 6 | 00017123 | TREAD, STEP, 3 TREAD, OPEN POUR, "B", 4' | 00017123 | 00017123 | 2 |
| 7 | 00017124 | TREAD, STEP, 3 TREAD, OPEN POUR, "D", 4' LONG | 00017124 | 00017124 | 1 |

| | | | | | | |
|--|-------------------|--|-------------------------------|--------------------------------|---|------------|
| ENGINEERING DRAWING NUMBER 00017119 | WEIGHT: lbs | UNLESS OTHERWISE SPECIFIED DIMENSIONS ARE IN INCHES TOLERANCES DECIMALS: X ± .1 XX ± .01 XXX ± .001 XXXX ± .0005 ANGULAR: X ± 0.5 THIRD ANGLE PROJECTION | DESIGNED BY: MWILLIAMS | CREATION DATE: 01/05/18 | SAMSON STEEL | |
| | VOLUME: Inch³ | | DETAILED BY: MWILLIAMS | DETAILED DATE: 02/01/18 | | |
| | COLOR: NA | | LAST REVISED BY: mwilliams | LAST REVISED DATE: 02/01/18 | TITLE: STEP, 4' X 8', 3 TREAD, OPEN POUR, TANNING LEDGE, SUB ASSEMBLY | |
| | HEAT TREAT: NA | | MATERIAL: | | | |
| | FINISH: NA | | | | PART NUMBER: HSM17119 | |
| | TEXTURE: 384 | | | | | |
| | | | | | SCALE: 1:32 | SIZE: B |
| | | | | | SHEET: 4 OF 5 | |



| REVISION HISTORY | | | | |
|------------------|-------------------------|----------|-----|-----------|
| REV | DESCRIPTION | DATE | ECO | BY |
| B | ADDED TEXTURE | 01/30/18 | | MWILLIAMS |
| C | UPDATED PART # | 01/31/18 | | MWILLIAMS |
| D | RELEASED FOR PRODUCTION | 01/31/18 | | MWILLIAMS |



NOTES:

- THESE ARE FINISHED DIMENSIONS READY FOR THE LINER.
- DIMENSIONS ARE FROM INSIDE POOL PANELS.
- ROPE AND FLOAT ASSEMBLY SHOULD BE INSTALLED IN ACCORDANCE WITH CURRENT ANSI/ASPS/ICC REGULATIONS
- HYDRA LINER TRACK FOR STEPS IS INSTALLED WITH THE BARB FACING THE RISER WALL ON THE STEP.

EXCAVATION NOTES:

- ROUGH EXCAVATION SHOULD BE 2" DEEPER IN EACH INSTANCE.
- SOIL TO HAVE MINIMUM BEARING CAPACITY OF 1500 PSF.
- LOCATE TOP OF POOL AT LEAST 6" ABOVE THE SURROUNDING LAND ELEVATION.
- SEE "OVER DIG DETAIL" FOR EXCAVATION AROUND POOL.
- FILL VOIDS UNDER BASE OF PANELS AND TAMP WELL.
- BACK FILL WITH NON-EXPANSIVE MATERIAL.
- FOLLOW ALL CURRENT ANSI / APSP / ICC GUIDELINES FOR RESIDENTIAL POOLS

IMPORTANT NOTES:

THIS DOCUMENT IS FOR ILLUSTRATIVE PURPOSES ONLY. THE DEALER OR CONTRACTOR WHO SELLS OR INSTALLS YOUR POOL IS AN INDEPENDENT CONTRACTOR AND IS NOT AN AGENT OF THE MANUFACTURER. THE CONSTRUCTION METHODS ILLUSTRATED HERE ARE SUGGESTIONS AND APPLY ONLY TO NORMAL GROUND CONDITIONS. THERE MAY BE ADDITIONAL PRECAUTIONS AND/OR METHODS OF CONSTRUCTION. PROPER INSTALLATION IS THE RESPONSIBILITY OF THE DEALER/BUILDER/CONTRACTOR.

| ITEM | FILE NAME | DESCRIPTION | CUSTOMER DRAWING # | VENDOR PART # | QTY. |
|------|------------|--|--------------------|---------------|------|
| 1 | BOLT, PACK | BOLT, FLANGE, 3/8-16 X 1", PACK (50) | HPS1916 | HPS1916 | 1 |
| 2 | SBRACE | BRACE, FOLD OVER WITH TURNBUCKLE, STEEL, HPSFOB | HPSFOB | HPSFOB | 1 |
| 3 | 00017133 | LINER TRACK, BACK | 00017133 | 00017133 | 3 |
| 4 | 00017129 | PANEL BACK, 2' LONG, 3 TREAD, OPEN POUR, TANNING LEDGE | 00017129 | 00017129 | 1 |
| 5 | 00017118 | SUPPORT, CENTER, 3 TREAD, OPEN POUR | 00017118 | 00017118 | 1 |
| 6 | 00017131 | TREAD, STEP, 3 TREAD, OPEN POUR, "B", 2' LONG | 00017131 | 00017131 | 2 |
| 7 | 00017132 | TREAD, STEP, 3 TREAD, OPEN POUR, "D", 2' LONG | 00017132 | 00017132 | 1 |

ENGINEERING DRAWING NUMBER
00017128

WEIGHT:
lbs

VOLUME:
Inch³

COLOR:
NA

HEAT TREAT:
NA

FINISH:
NA

TEXTURE:
192

UNLESS OTHERWISE SPECIFIED

DIMENSIONS ARE IN INCHES
TOLERANCES
DECIMALS: X ± .1
 XX ± .01
 XXX ± .001
 XXXX ± .0005

ANGULAR: X ± 0.5

THIRD ANGLE PROJECTION

DESIGNED BY:
MWILLIAMS

DETAILED BY:
MWILLIAMS

LAST REVISED BY:
mwilliams

MATERIAL:

CREATION DATE:
01/08/18

DETAILED DATE:
02/01/18

LAST REVISED DATE:
02/01/18

SAMSON STEEL

TITLE: STEP, 2' X 8', 3 TREAD, OPEN POUR, TANNING LEDGE, SUB ASSEMBLY

PART NUMBER:
HSM17128

SCALE:
1:32

SHEET:
5 OF 5

SIZE:
B