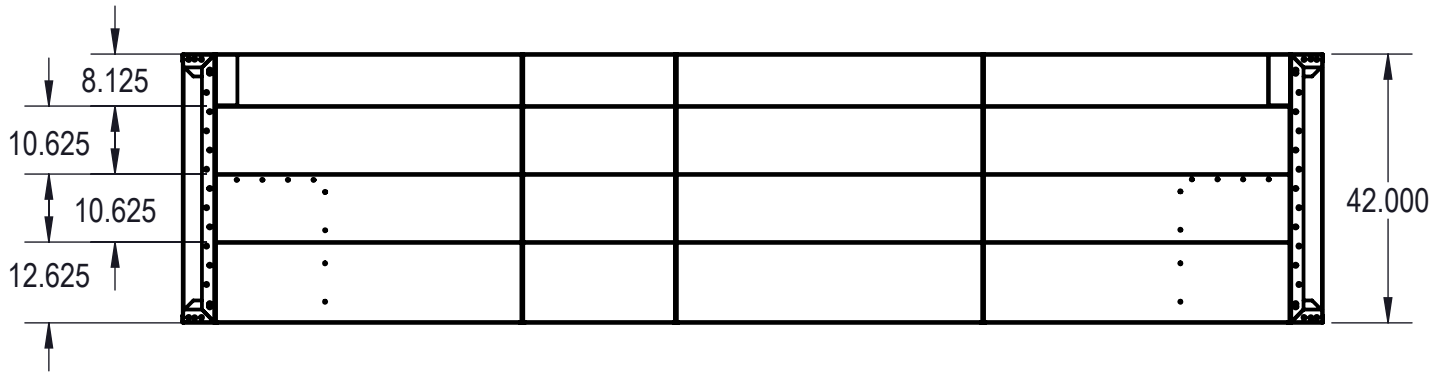
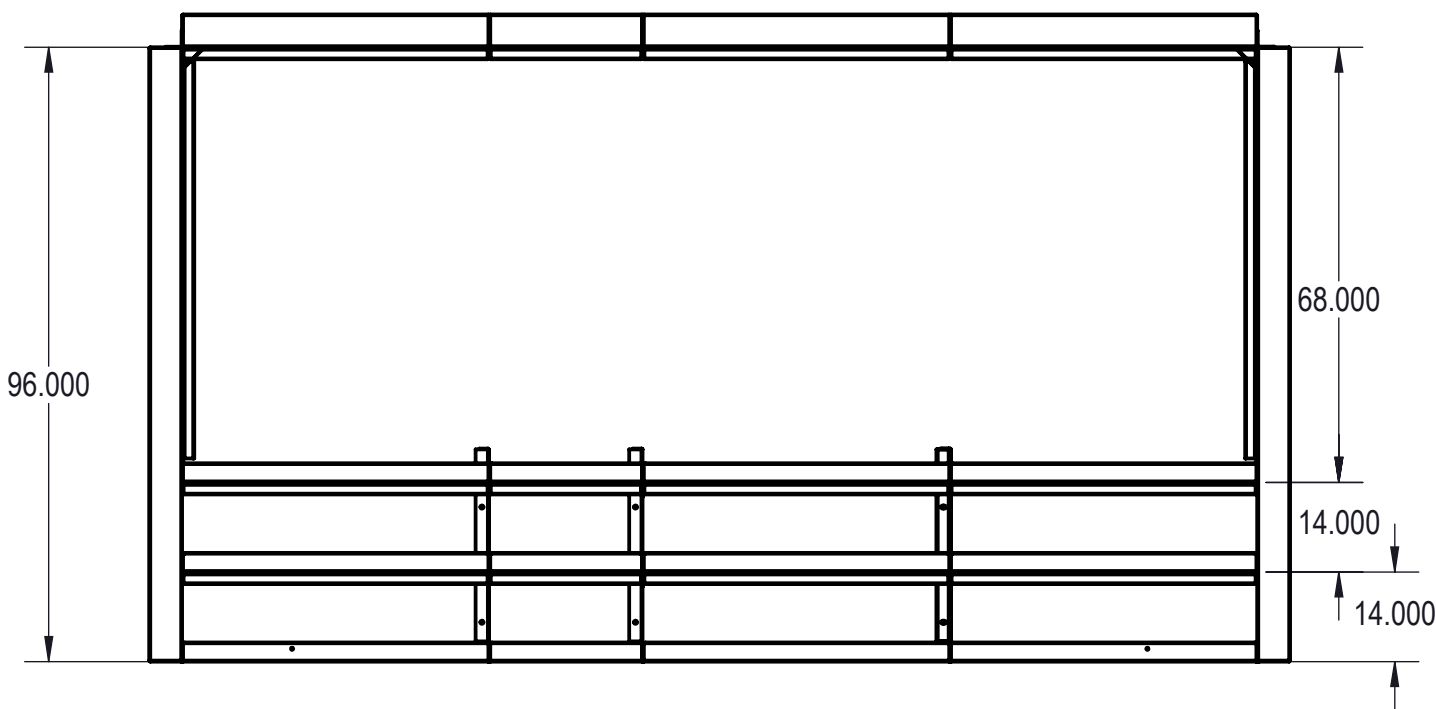
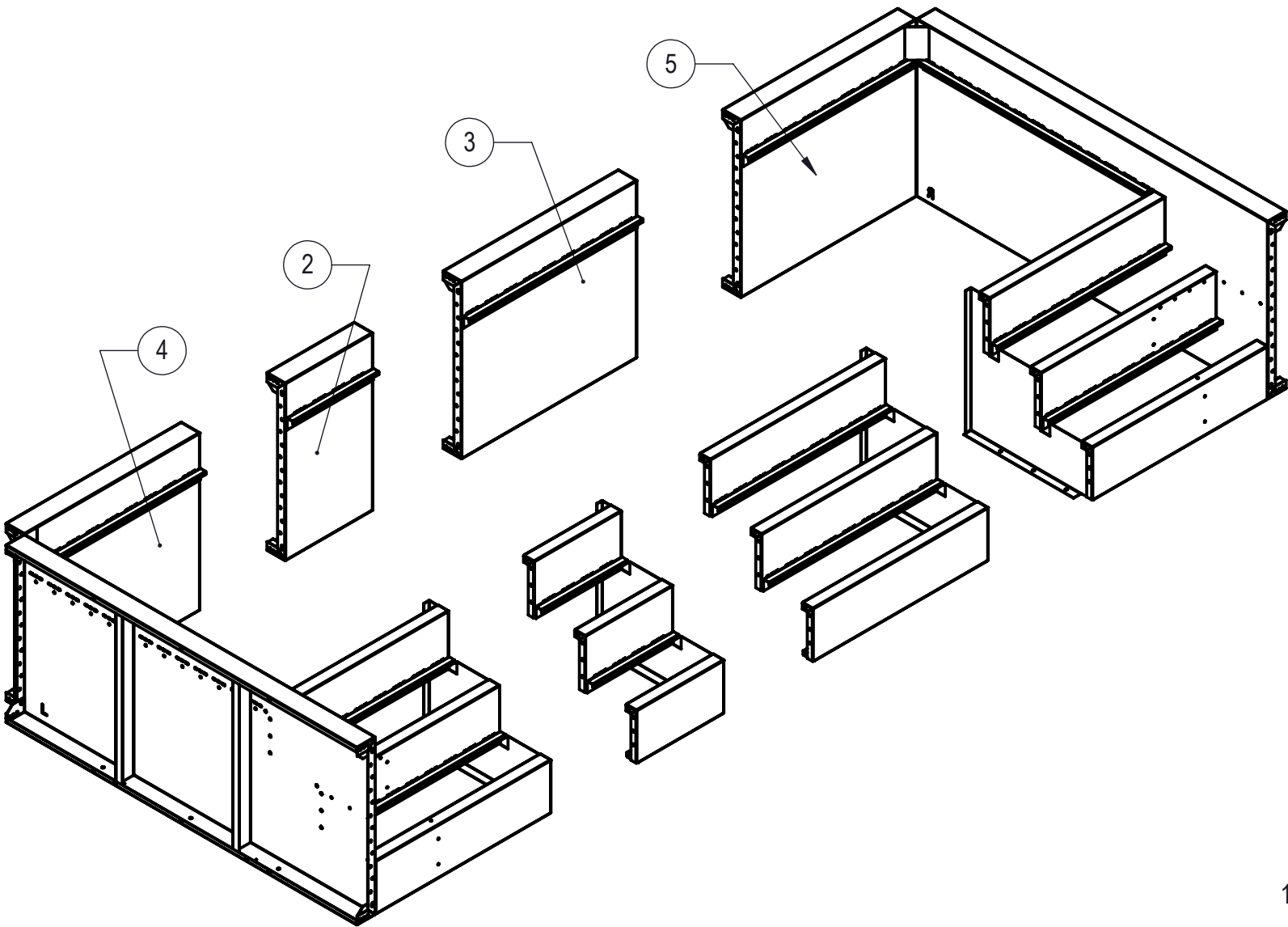


| REVISION HISTORY |                         |          |     |           |
|------------------|-------------------------|----------|-----|-----------|
| REV.             | DESCRIPTION             | DATE     | ECO | BY        |
| A                | RELEASED FOR PRODUCTION | 01/30/18 |     | MWILLIAMS |
| B                | RELEASED FOR PRODUCTION | 01/31/18 |     | MWILLIAMS |

DRAWING NUMBER: 00017461  
DATE: 01/31/18  
TIME: 11:20:02 AM



NOTES:

- THESE ARE FINISHED DIMENSIONS READY FOR THE LINER.
- DIMENSIONS ARE FROM INSIDE POOL PANELS.
- ROPE AND FLOAT ASSEMBLY SHOULD BE INSTALLED IN ACCORDANCE WITH CURRENT ANSI/ASPS/ICC REGULATIONS
- HYDRA LINER TRACK FOR STEPS IS INSTALLED WITH THE BARB FACING THE RISER WALL ON THE STEP.


EXCAVATION NOTES:

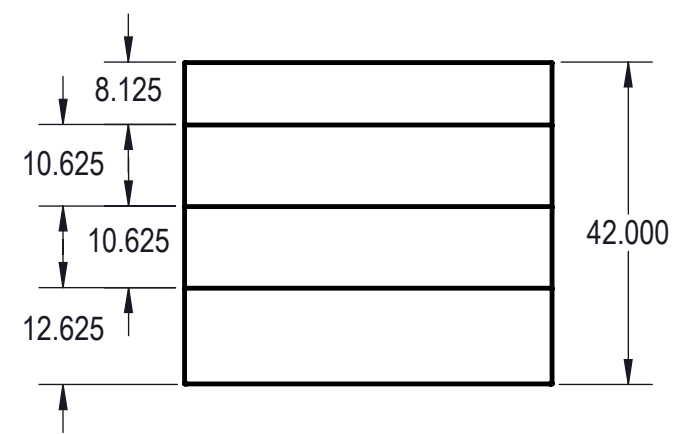
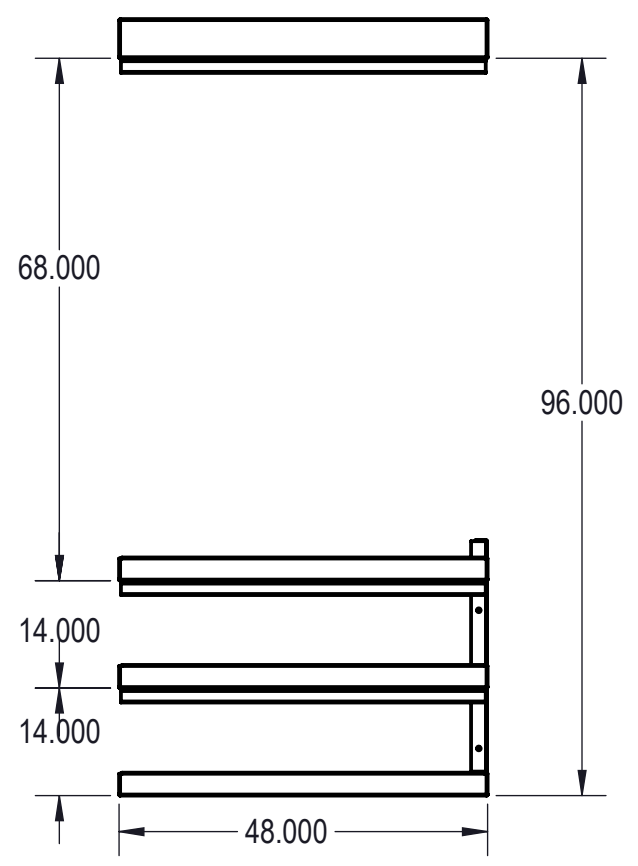
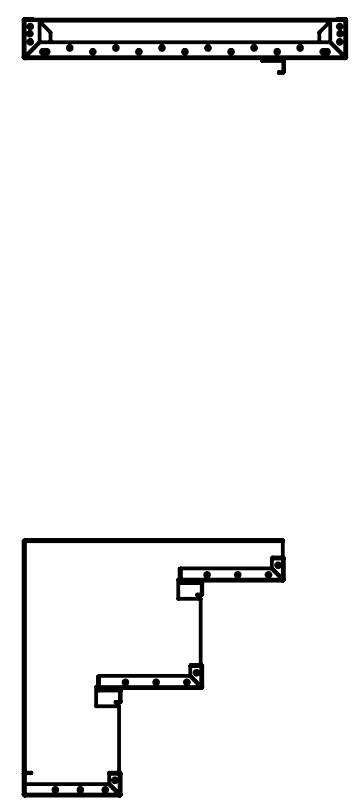
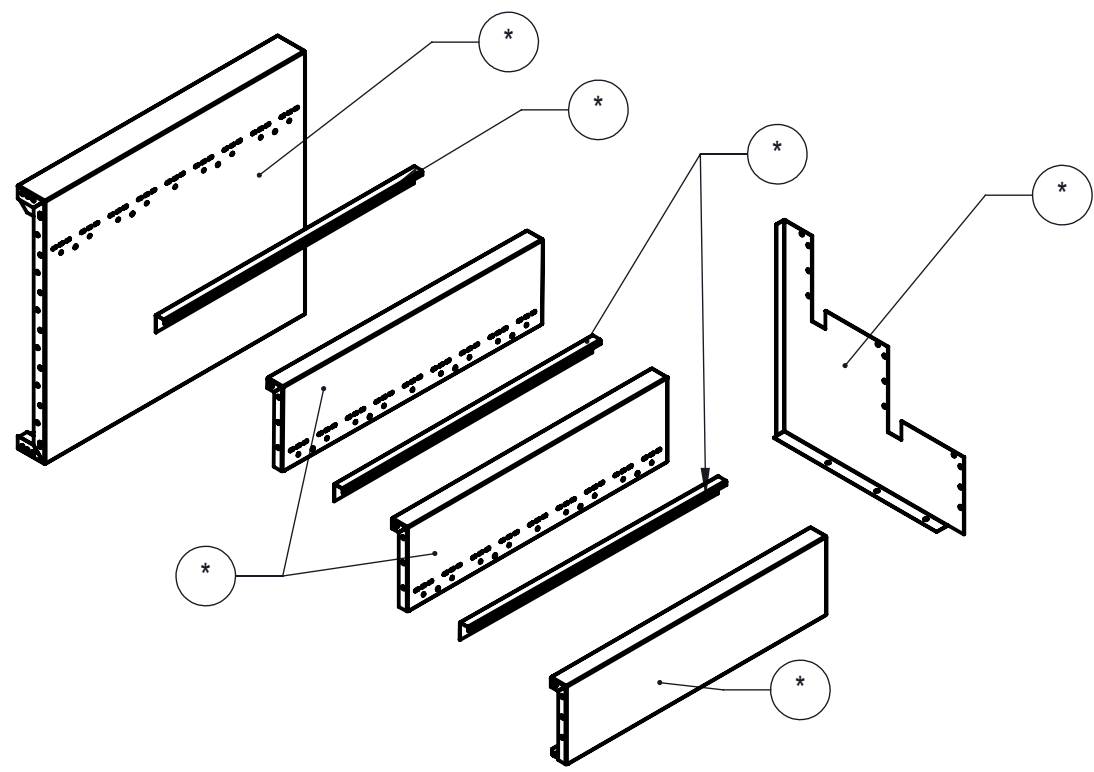
- ROUGH EXCAVATION SHOULD BE 2" DEEPER IN EACH INSTANCE.
- SOIL TO HAVE MINIMUM BEARING CAPACITY OF 1500 PSF.
- LOCATE TOP OF POOL AT LEAST 6" ABOVE THE SURROUNDING LAND ELEVATION.
- SEE "OVER DIG DETAIL" FOR EXCAVATION AROUND POOL.
- FILL VOIDS UNDER BASE OF PANELS AND TAMP WELL.
- BACK FILL WITH NON-EXPANSIVE MATERIAL.
- FOLLOW ALL CURRENT ANSI / APSP / ICC GUIDELINES FOR RESIDENTIAL POOLS

IMPORTANT NOTES:

THIS DOCUMENT IS FOR ILLUSTRATIVE PURPOSES ONLY. THE DEALER OR CONTRACTOR WHO SELLS OR INSTALLS YOUR POOL IS AN INDEPENDENT CONTRACTOR AND IS NOT AN AGENT OF THE MANUFACTURER. THE CONSTRUCTION METHODS ILLUSTRATED HERE ARE SUGGESTIONS AND APPLY ONLY TO NORMAL GROUND CONDITIONS. THERE MAY BE ADDITIONAL PRECAUTIONS AND/OR METHODS OF CONSTRUCTION. PROPER INSTALLATION IS THE RESPONSIBILITY OF THE DEALER/BUILDER/CONTRACTOR.

| ITEM | FILE NAME  | DESCRIPTION  | CUSTOMER DRAWING # | VENDOR PART # | QTY. |
|------|------------|--|--------------------|---------------|------|
| 1    | BOLT, PACK | BOLT, FLANGE, 3/8-16 X 1", PACK (50)   | HPS1916            | HPS1916       | 3    |
| 2    | 00017128   | STEP, 2' X 8", 3 TREAD, OPEN POUR, TANNING LEDGE, SUB ASSEMBLY                   | HSM17128           | 00017128      | 1    |
| 3    | 00017119   | STEP, 4' X 8", 3 TREAD, OPEN POUR, TANNING LEDGE, SUB ASSEMBLY                   | HSM17119           | 00017119      | 1    |
| 4    | 00017156   | STEP, 4' X 8", 6" RADIUS, 3 TREAD, LEFT, OPEN POUR, TANNING LEDGE, SUB ASSEMBLY  | HSM17156           | 00017156      | 1    |
| 5    | 00017135   | STEP, 4' X 8", 6" RADIUS, 3 TREAD, RIGHT, OPEN POUR, TANNING LEDGE, SUB ASSEMBLY | HSM17135           | 00017135      | 1    |

|  |                   |   |                               |                                |  |                           |  |                  |            |
|--|-------------------|---|-------------------------------|--------------------------------|--|---------------------------|--|------------------|------------|
| ENGINEERING DRAWING NUMBER<br>00017461 | WEIGHT:<br>lbs    | UNLESS OTHERWISE SPECIFIED<br>DIMENSIONS ARE IN INCHES<br>TOLERANCES<br>DECIMALS: X ± .1<br>XX ± .01<br>XXX ± .001<br>XXXX ± .0005<br><br>ANGULAR: X ± 0.5<br>THIRD ANGLE PROJECTION<br> | DESIGNED BY:<br>MWILLIAMS     | CREATION DATE:<br>01/30/18     | SAMSON STEEL   |                           |  |                  |            |
|  | VOLUME:<br>Inch³  |   | DETAILED BY:<br>MWILLIAMS     | DETAILED DATE:<br>01/30/18     |  |                           |  |                  |            |
|  | COLOR:<br>NA      |   | LAST REVISED BY:<br>mwilliams | LAST REVISED DATE:<br>01/31/18 | TITLE: STEP, 8' X 14', 6" RADIUS, OPEN POUR, TANNING LEDGE,<br>MODULAR |                           |  |                  |            |
|  | HEAT TREAT:<br>NA |   | MATERIAL:                     |                                |  |                           |  |                  |            |
|  | FINISH:<br>NA     |   |                               |                                |  | PART NUMBER:<br>HSSM17461 |  | SCALE:<br>1:48   | SIZE:<br>B |
|  | TEXTURE:<br>1728  |   |                               |                                |  |                           |  | SHEET:<br>1 OF 5 |            |



NOTES:

- 1. THESE ARE FINISHED DIMENSIONS READY FOR THE LINER.
- 2. DIMENSIONS ARE FROM INSIDE POOL PANELS.
- 3. ROPE AND FLOAT ASSEMBLY SHOULD BE INSTALLED IN ACCORDANCE WITH CURRENT ANSI/ASPS/ICC REGULATIONS
- 4. HYDRA LINER TRACK FOR STEPS IS INSTALLED WITH THE BARB FACING THE RISER WALL ON THE STEP.

EXCAVATION NOTES:

- 5. ROUGH EXCAVATION SHOULD BE 2" DEEPER IN EACH INSTANCE.
- 6. SOIL TO HAVE MINIMUM BEARING CAPACITY OF 1500 PSF.
- 7. LOCATE TOP OF POOL AT LEAST 6" ABOVE THE SURROUNDING LAND ELEVATION.
- 8. SEE "OVER DIG DETAIL" FOR EXCAVATION AROUND POOL.
- 9. FILL VOIDS UNDER BASE OF PANELS AND TAMP WELL.
- 10. BACK FILL WITH NON-EXPANSIVE MATERIAL.
- 11. FOLLOW ALL CURRENT ANSI / APSP / ICC GUIDELINES FOR RESIDENTIAL POOLS

IMPORTANT NOTES:

THIS DOCUMENT IS FOR ILLUSTRATIVE PURPOSES ONLY. THE DEALER OR CONTRACTOR WHO SELLS OR INSTALLS YOUR POOL IS AN INDEPENDENT CONTRACTOR AND IS NOT AN AGENT OF THE MANUFACTURER. THE CONSTRUCTION METHODS ILLUSTRATED HERE ARE SUGGESTIONS AND APPLY ONLY TO NORMAL GROUND CONDITIONS. THERE MAY BE ADDITIONAL PRECAUTIONS AND/OR METHODS OF CONSTRUCTION. PROPER INSTALLATION IS THE RESPONSIBILITY OF THE DEALER/BUILDER/CONTRACTOR.

| ITEM | FILE NAME  | DESCRIPTION  | CUSTOMER DRAWING # | VENDOR PART # | QTY. |
|------|------------|--|--------------------|---------------|------|
| 1    | BOLT, PACK | BOLT, FLANGE, 3/8-16 X 1", PACK (50)                             | HPS1916            | HPS1916       | 1    |
| 2    | 00017122   | LINER TRACK, OPEN POUR   | 00017122           | 00017122      | 3    |
| 3    | 00017121   | PANEL BACK, 4' LONG, 3' TREAD, OPEN POUR, TANNING LEDGE ASSEMBLY | 00017121           | 00017121      | 1    |
| 4    | 00017118   | SUPPORT, CENTER, 3 TREAD, OPEN POUR                              | 00017118           | 00017118      | 1    |
| 5    | 00017123   | TREAD, STEP, 3 TREAD, OPEN POUR, "B", 4'                         | 00017123           | 00017123      | 2    |
| 6    | 00017124   | TREAD, STEP, 3 TREAD, OPEN POUR, "D", 4' LONG                    | 00017124           | 00017124      | 1    |
| 7    | SBRACE     | BRACE, FOLD OVER WITH TURNBUCKLE, STEEL, HPSFOB                  | HPSFOB             | HPSFOB        | 1    |

ENGINEERING DRAWING NUMBER  
00017119

WEIGHT: lbs  
VOLUME: Inch³  
COLOR: NA  
HEAT TREAT: NA  
FINISH: NA  
TEXTURE: 384

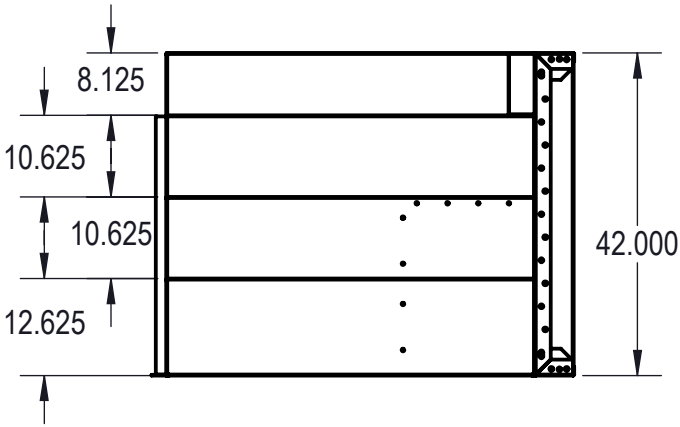
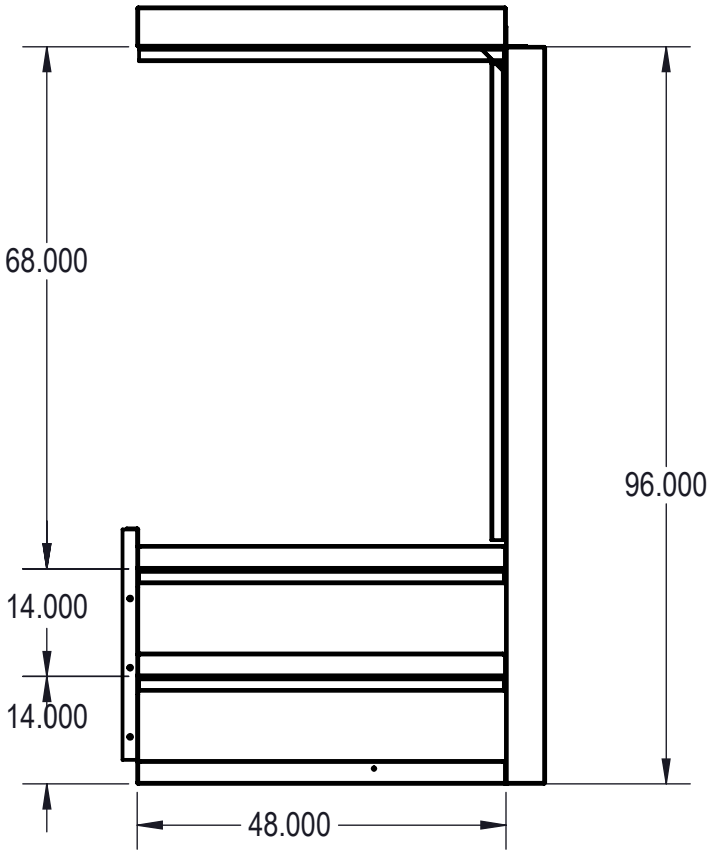
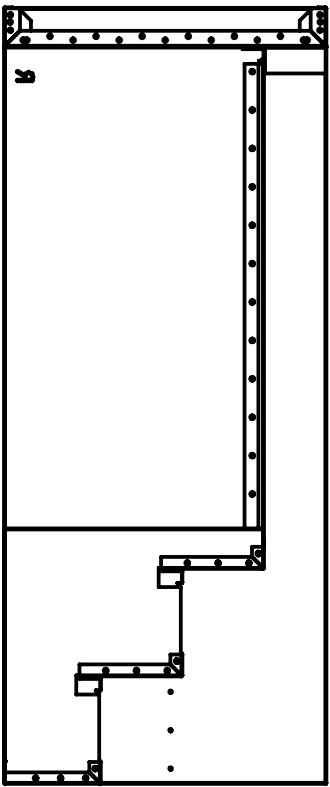
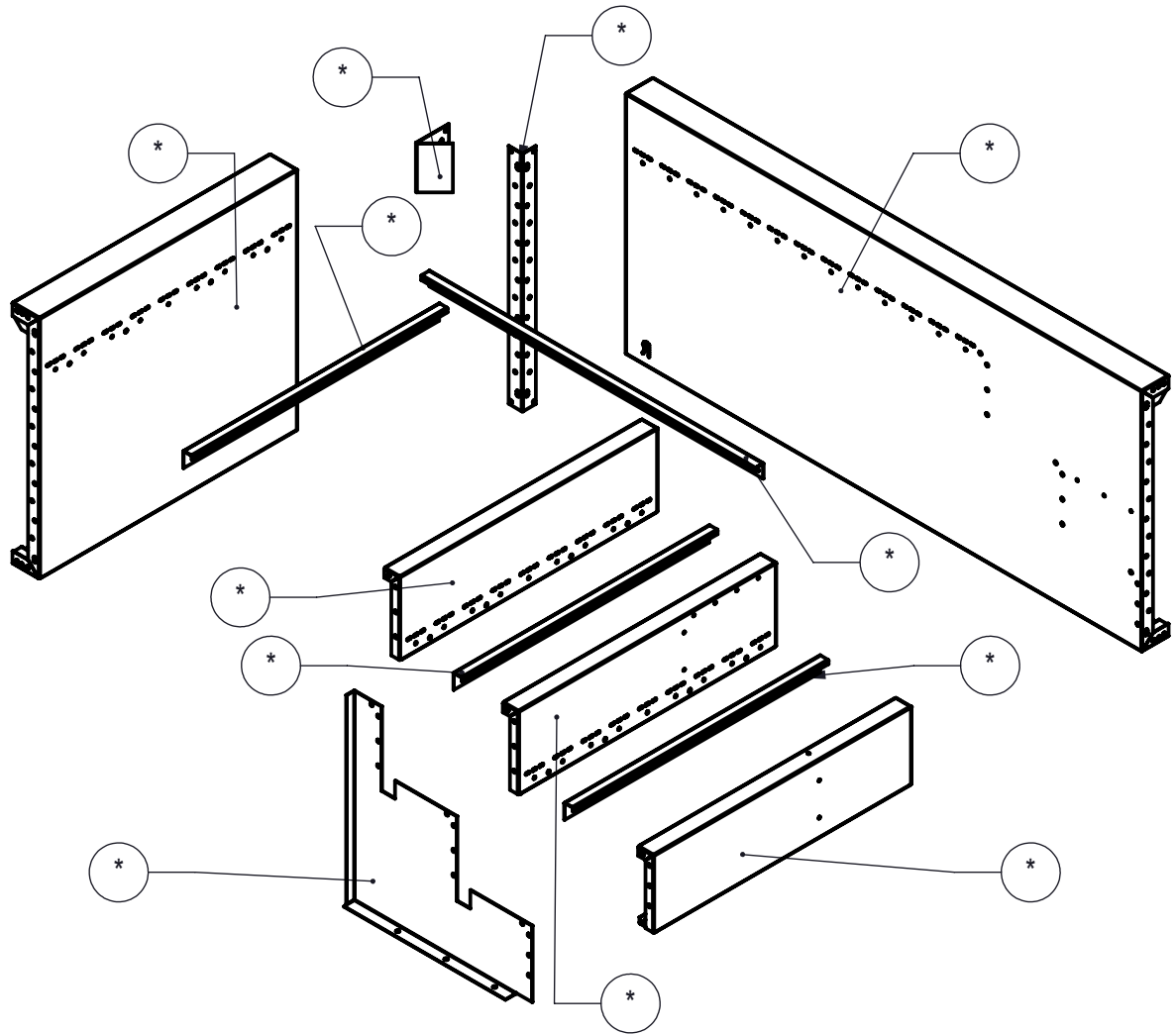
UNLESS OTHERWISE SPECIFIED  
DIMENSIONS ARE IN INCHES  
TOLERANCES  
DECIMALS: X ± .1  
              XX ± .01  
             XXX ± .001  
             XXXX ± .0005  
ANGULAR: X ± 0.5  
THIRD ANGLE PROJECTION

DESIGNED BY: MWILLIAMS  
DETAILED BY: MWILLIAMS  
LAST REVISED BY: mwiliams  
MATERIAL:

CREATION DATE: 01/05/18  
DETAILED DATE: 01/30/18  
LAST REVISED DATE: 01/31/18

SAMSON STEEL  
TITLE: STEP, 4' X 8', 3 TREAD, OPEN POUR, TANNING LEDGE, SUB ASSEMBLY  
PART NUMBER: HSM17119  
SCALE: 1:32  
SHEET: 2 OF 5  
SIZE: B

| REVISION HISTORY |                         |          |     |           |
|------------------|-------------------------|----------|-----|-----------|
| REV              | DESCRIPTION             | DATE     | ECO | BY        |
| A                | RELEASED FOR PRODUCTION | 01/18/18 |     | MWILLIAMS |



NOTES:

- THESE ARE FINISHED DIMENSIONS READY FOR THE LINER.
- DIMENSIONS ARE FROM INSIDE POOL PANELS.
- ROPE AND FLOAT ASSEMBLY SHOULD BE INSTALLED IN ACCORDANCE WITH CURRENT ANSI/ASPS/ICC REGULATIONS
- HYDRA LINER TRACK FOR STEPS IS INSTALLED WITH THE BARB FACING THE RISER WALL ON THE STEP.


EXCAVATION NOTES:

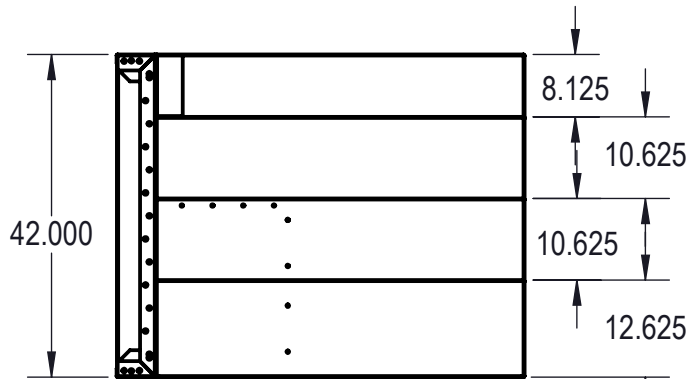
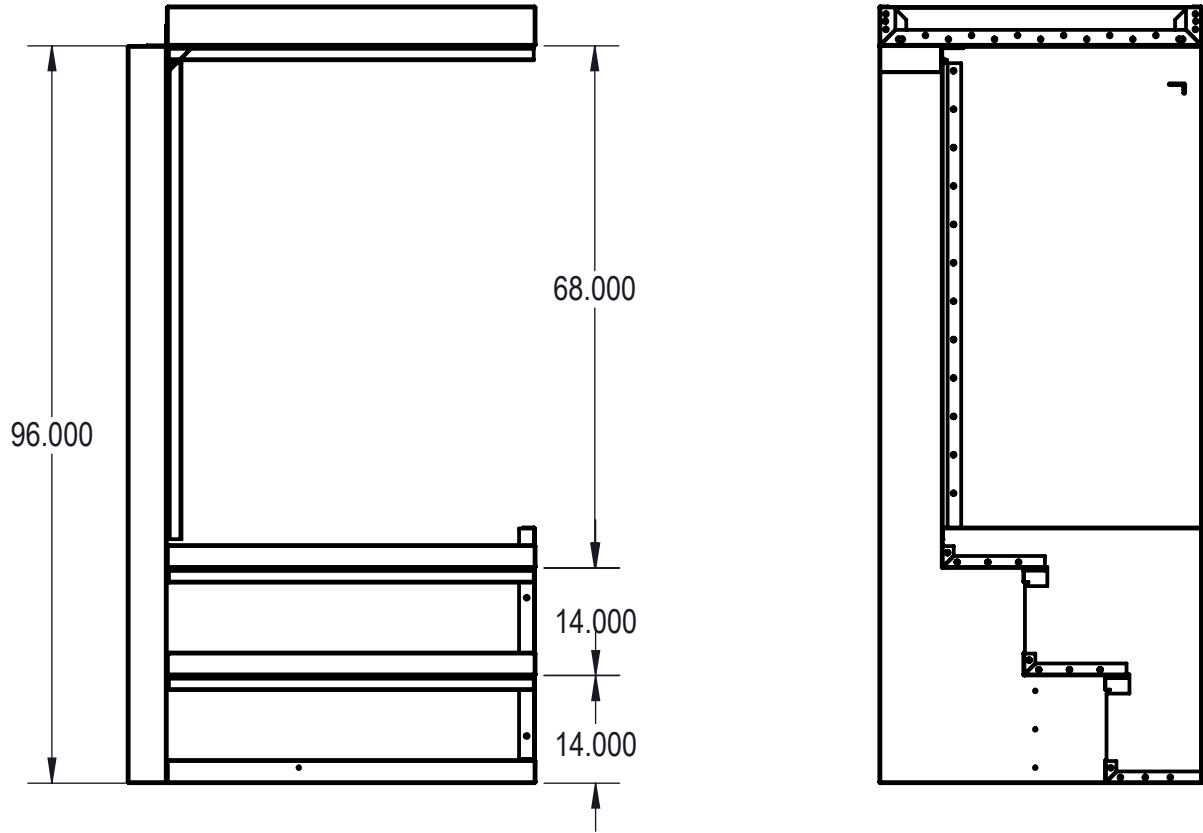
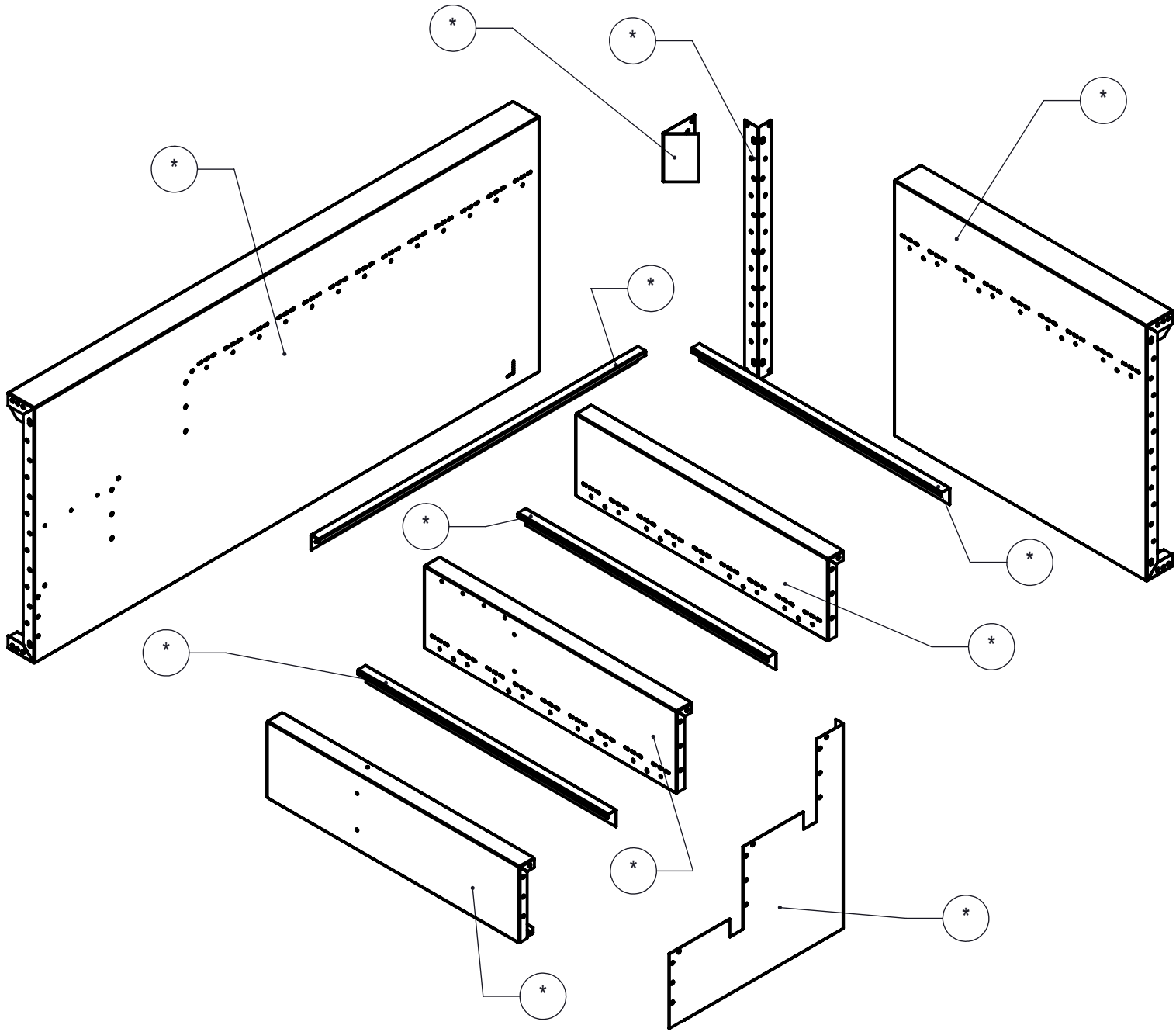
- ROUGH EXCAVATION SHOULD BE 2" DEEPER IN EACH INSTANCE.
- SOIL TO HAVE MINIMUM BEARING CAPACITY OF 1500 PSF.
- LOCATE TOP OF POOL AT LEAST 6" ABOVE THE SURROUNDING LAND ELEVATION.
- SEE "OVER DIG DETAIL" FOR EXCAVATION AROUND POOL.
- FILL VOIDS UNDER BASE OF PANELS AND TAMP WELL.
- BACK FILL WITH NON-EXPANSIVE MATERIAL.
- FOLLOW ALL CURRENT ANSI / APSP / ICC GUIDELINES FOR RESIDENTIAL POOLS

IMPORTANT NOTES:

THIS DOCUMENT IS FOR ILLUSTRATIVE PURPOSES ONLY. THE DEALER OR CONTRACTOR WHO SELLS OR INSTALLS YOUR POOL IS AN INDEPENDENT CONTRACTOR AND IS NOT AN AGENT OF THE MANUFACTURER. THE CONSTRUCTION METHODS ILLUSTRATED HERE ARE SUGGESTIONS AND APPLY ONLY TO NORMAL GROUND CONDITIONS. THERE MAY BE ADDITIONAL PRECAUTIONS AND/OR METHODS OF CONSTRUCTION. PROPER INSTALLATION IS THE RESPONSIBILITY OF THE DEALER/BUILDER/CONTRACTOR.

| ITEM | FILE NAME  | DESCRIPTION   | CUSTOMER DRAWING # | VENDOR PART # | QTY. |
|------|------------|---|--------------------|---------------|------|
| 1    | BOLT, PACK | BOLT, FLANGE, 3/8-16 X 1", PACK (50)                                      | HPS1916            | HPS1916       | 2    |
| 2    | 00000051   | CONNECTOR, CORNER, 2 1/2" X 1 1/2" X 90°                                  | HPSD90C            | HPSD90C       | 1    |
| 3    | 00017122   | LINER TRACK, OPEN POUR  | 00017122           | 00017122      | 3    |
| 4    | 00017142   | LINER TRACK, RIGHT OR LEFT  | 00017142           | 00017142      | 1    |
| 5    | 00017121   | PANEL BACK, 4' LONG, 3 TREAD, OPEN POUR, TANNING LEDGE ASSEMBLY           | 00017121           | 00017121      | 1    |
| 6    | 00017140   | PANEL, STEP, 3 TREAD, BENCH, RIGHT SIDE, OPEN POUR, BENCH OPTION ASSEMBLY | 00017140           | 00017140      | 1    |
| 7    | 00004159   | STEP, 3 TREAD, 90 DEGREE, CORNER, 6" RADIUS FILLER                        |                    |               | 1    |
| 8    | 00017118   | SUPPORT, CENTER, 3 TREAD, OPEN POUR                                       | 00017118           | 00017118      | 1    |
| 9    | 00017136   | TREAD, STEP, 3 TREAD, "C", BENCH OPTION, 4' LONG, RIGHT SIDE              | 00017136           | 00017136      | 1    |
| 10   | 00017123   | TREAD, STEP, 3 TREAD, OPEN POUR, "B", 4'                                  | 00017123           | 00017123      | 1    |
| 11   | 00017138   | TREAD, STEP, 3 TREAD, OPEN POUR, "D", 4' LONG, RIGHT SIDE                 | 00017138           | 00017138      | 1    |
| 12   | SBRACE     | BRACE, FOLD OVER WITH TURNBUCKLE, STEEL, HPSFOB                           | HPSFOB             | HPSFOB        | 1    |

|  |                   |   |                               |                                |  |            |  |
|--|-------------------|---|-------------------------------|--------------------------------|--|------------|--|
| ENGINEERING DRAWING NUMBER<br>00017135 | WEIGHT:<br>lbs    | UNLESS OTHERWISE SPECIFIED<br><br>DIMENSIONS ARE IN INCHES<br>TOLERANCES<br>DECIMALS: X ± .1<br>XX ± .01<br>XXX ± .001<br>XXXX ± .0005<br><br>ANGULAR: X ± 0.5<br><br>THIRD ANGLE PROJECTION<br><br> | DESIGNED BY:<br>MWILLIAMS     | CREATION DATE:<br>01/08/18     | SAMSON STEEL   |            |  |
|  | VOLUME:<br>Inch³  |   | DETAILED BY:<br>MWILLIAMS     | DETAILED DATE:<br>01/30/18     |  |            |  |
|  | COLOR:<br>NA      |   | LAST REVISED BY:<br>mwilliams | LAST REVISED DATE:<br>01/31/18 | TITLE: STEP, 4' X 8', 6" RADIUS, 3 TREAD, RIGHT, OPEN POUR,<br>TANNING LEDGE, SUB ASSEMBLY |            |  |
|  | HEAT TREAT:<br>NA |   | MATERIAL:                     |                                |  |            |  |
|  | FINISH:<br>NA     |   |                               |                                |  |            |  |
|  | TEXTURE:<br>576   |   |                               |                                | SCALE:<br>1:32<br>SHEET:<br>3 OF 5   | SIZE:<br>B |  |



NOTES:

- THESE ARE FINISHED DIMENSIONS READY FOR THE LINER.
- DIMENSIONS ARE FROM INSIDE POOL PANELS.
- ROPE AND FLOAT ASSEMBLY SHOULD BE INSTALLED IN ACCORDANCE WITH CURRENT ANSI/ASPS/ICC REGULATIONS
- HYDRA LINER TRACK FOR STEPS IS INSTALLED WITH THE BARB FACING THE RISER WALL ON THE STEP.



EXCAVATION NOTES:

- ROUGH EXCAVATION SHOULD BE 2" DEEPER IN EACH INSTANCE.
- SOIL TO HAVE MINIMUM BEARING CAPACITY OF 1500 PSF.
- LOCATE TOP OF POOL AT LEAST 6" ABOVE THE SURROUNDING LAND ELEVATION.
- SEE "OVER DIG DETAIL" FOR EXCAVATION AROUND POOL.
- FILL VOIDS UNDER BASE OF PANELS AND TAMP WELL.
- BACK FILL WITH NON-EXPANSIVE MATERIAL.
- FOLLOW ALL CURRENT ANSI / APSP / ICC GUIDELINES FOR RESIDENTIAL POOLS

IMPORTANT NOTES:

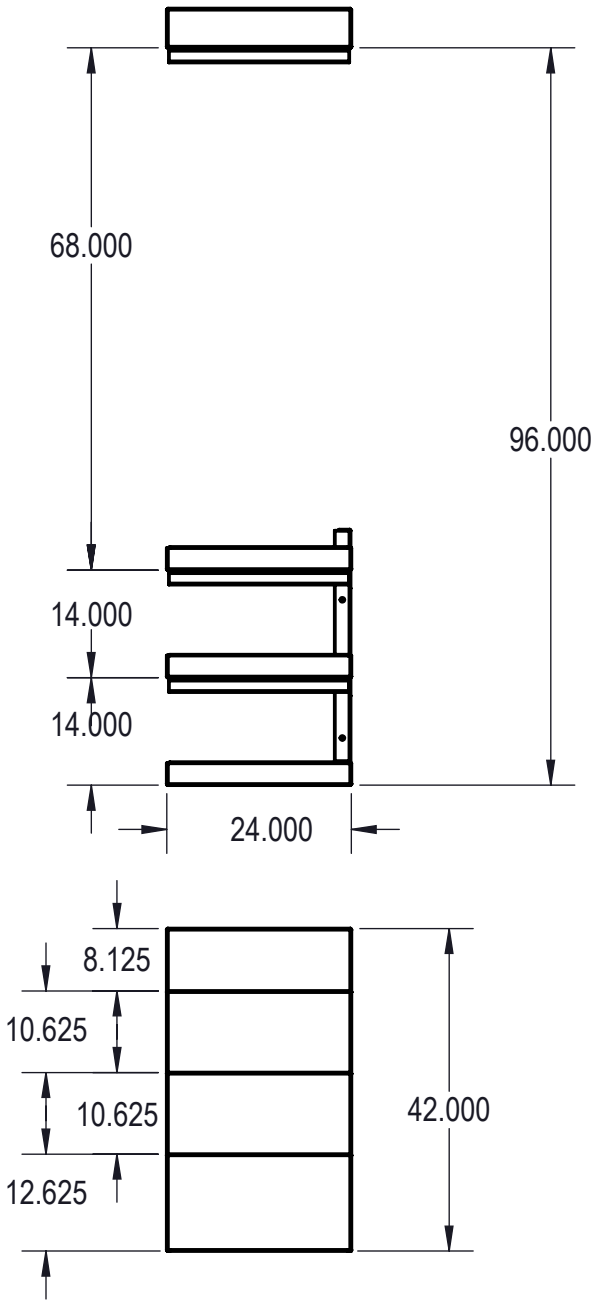
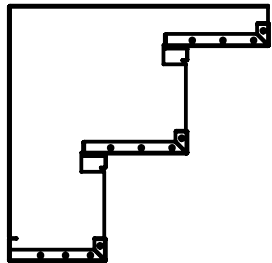
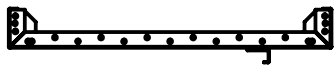
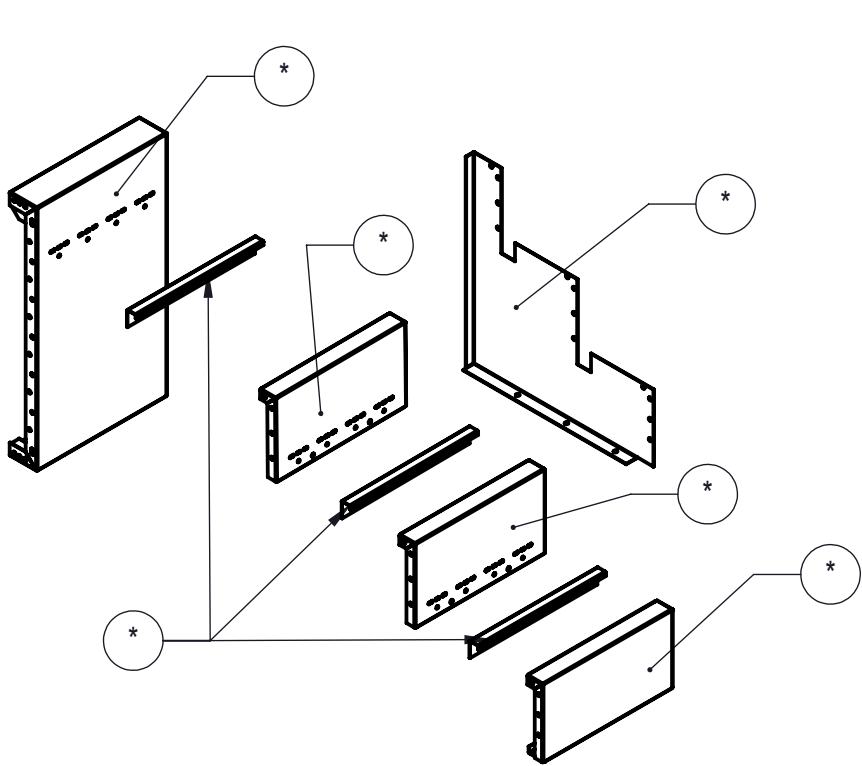
THIS DOCUMENT IS FOR ILLUSTRATIVE PURPOSES ONLY. THE DEALER OR CONTRACTOR WHO SELLS OR INSTALLS YOUR POOL IS AN INDEPENDENT CONTRACTOR AND IS NOT AN AGENT OF THE MANUFACTURER. THE CONSTRUCTION METHODS ILLUSTRATED HERE ARE SUGGESTIONS AND APPLY ONLY TO NORMAL GROUND CONDITIONS. THERE MAY BE ADDITIONAL PRECAUTIONS AND/OR METHODS OF CONSTRUCTION. PROPER INSTALLATION IS THE RESPONSIBILITY OF THE DEALER/BUILDER/CONTRACTOR.

| ITEM | FILE NAME  | DESCRIPTION   | CUSTOMER DRAWING # | VENDOR PART # | QTY. |
|------|------------|---|--------------------|---------------|------|
| 1    | BOLT, PACK | BOLT, FLANGE, 3/8-16 X 1", PACK (50)                                      | HPS1916            | HPS1916       | 2    |
| 2    | 00000051   | CONNECTOR, CORNER, 2 1/2" X 1 1/2" X 90°                                  | HPSD90C            | HPSD90C       | 1    |
| 3    | 00017122   | LINER TRACK, OPEN POUR  | 00017122           | 00017122      | 3    |
| 4    | 00017142   | LINER TRACK, RIGHT OR LEFT  | 00017142           | 00017142      | 1    |
| 5    | 00017121   | PANEL BACK, 4' LONG, 3 TREAD, OPEN POUR, TANNING LEDGE ASSEMBLY           | 00017121           | 00017121      | 1    |
| 6    | 00017157   | PANEL, STEP, 3 TREAD, BENCH, LEFT SIDE, OPEN POUR, BENCH OPTION, ASSEMBLY | 00017157           |               | 1    |
| 7    | 00004159   | STEP, 3 TREAD, 90 DEGREE, CORNER, 6" RADIUS FILLER                        |                    |               | 1    |
| 8    | 00017118   | SUPPORT, CENTER, 3 TREAD, OPEN POUR                                       | 00017118           | 00017118      | 1    |
| 9    | 00017158   | TREAD, STEP, 3 TREAD, "C", BENCH OPTION, 4' LONG, LEFT SIDE               | 00017158           | 00017158      | 1    |
| 10   | 00017123   | TREAD, STEP, 3 TREAD, OPEN POUR, "B", 4'                                  | 00017123           | 00017123      | 1    |
| 11   | 00017160   | TREAD, STEP, 3 TREAD, OPEN POUR, "D", 4' LONG, LEFT SIDE                  | 00017160           | 00017160      | 1    |
| 12   | SBRACE     | BRACE, FOLD OVER WITH TURNBUCKLE, STEEL, HPSFOB                           | HPSFOB             | HPSFOB        | 1    |

|  |                   |   |                               |                                |   |                 |  |  |                   |
|--|-------------------|---|-------------------------------|--------------------------------|---|-----------------|--|--|-------------------|
| ENGINEERING DRAWING NUMBER:<br><b>00017156</b> | WEIGHT:<br>lbs    | UNLESS OTHERWISE SPECIFIED<br><br>DIMENSIONS ARE IN INCHES<br>TOLERANCES<br>DECIMALS: X ± .1<br>XX ± .01<br>XXX ± .001<br>XXXX ± .0005<br><br>ANGULAR: X ± 0.5<br>THIRD ANGLE PROJECTION<br><br>  | DESIGNED BY:<br>MWILLIAMS     | CREATION DATE:<br>01/09/18     | SAMSON STEEL  |                 |  |  |                   |
|  | VOLUME:<br>Inch³  |   | DETAILED BY:<br>MWILLIAMS     | DETAILED DATE:<br>01/30/18     |   |                 |  |  |                   |
|  | COLOR:<br>NA      |   | LAST REVISED BY:<br>mwilliams | LAST REVISED DATE:<br>01/31/18 | TITLE: STEP, 4' X 8', 6" RADIUS, 3 TREAD, LEFT, OPEN POUR,<br>TANNING LEDGE, SUB ASSEMBLY |                 |  |  |                   |
|  | HEAT TREAT:<br>NA |   | MATERIAL:                     |                                |   |                 |  |  |                   |
|  | FINISH:<br>NA     |   |                               |                                |   | PART NUMBER:    |  | SCALE:<br>1:32<br><br>SHEET:<br>4 OF 5 | SIZE:<br><b>B</b> |
|  | TEXTURE:<br>576   |   |                               |                                |   | <b>HSM17156</b> |  |  |                   |

| REVISION HISTORY |                    |          |     |           |
|------------------|--------------------|----------|-----|-----------|
| REV.             | DESCRIPTION        | DATE     | ECO | BY        |
| A                | RELEASED FOR QUOTE | 01/19/18 |     | MWILLIAMS |
| B                | ADDED TEXTURE      | 01/30/18 |     | MWILLIAMS |

DRAWING NUMBER: 00017128  
MADE FROM: 00017128  
CHECK IN DATE/TIME: Wednesday, January 31, 2018 11:18:16 AM



NOTES:

- THESE ARE FINISHED DIMENSIONS READY FOR THE LINER.
- DIMENSIONS ARE FROM INSIDE POOL PANELS.
- ROPE AND FLOAT ASSEMBLY SHOULD BE INSTALLED IN ACCORDANCE WITH CURRENT ANSI/APSP/ICC REGULATIONS
- HYDRA LINER TRACK FOR STEPS IS INSTALLED WITH THE BARB FACING THE RISER WALL ON THE STEP.


EXCAVATION NOTES:

- ROUGH EXCAVATION SHOULD BE 2" DEEPER IN EACH INSTANCE.
- SOIL TO HAVE MINIMUM BEARING CAPACITY OF 1500 PSF.
- LOCATE TOP OF POOL AT LEAST 6" ABOVE THE SURROUNDING LAND ELEVATION.
- SEE "OVER DIG DETAIL" FOR EXCAVATION AROUND POOL.
- FILL VOIDS UNDER BASE OF PANELS AND TAMP WELL.
- BACK FILL WITH NON-EXPANSIVE MATERIAL.
- FOLLOW ALL CURRENT ANSI / APSP / ICC GUIDELINES FOR RESIDENTIAL POOLS

IMPORTANT NOTES:

THIS DOCUMENT IS FOR ILLUSTRATIVE PURPOSES ONLY. THE DEALER OR CONTRACTOR WHO SELLS OR INSTALLS YOUR POOL IS AN INDEPENDENT CONTRACTOR AND IS NOT AN AGENT OF THE MANUFACTURER. THE CONSTRUCTION METHODS ILLUSTRATED HERE ARE SUGGESTIONS AND APPLY ONLY TO NORMAL GROUND CONDITIONS. THERE MAY BE ADDITIONAL PRECAUTIONS AND/OR METHODS OF CONSTRUCTION. PROPER INSTALLATION IS THE RESPONSIBILITY OF THE DEALER/BUILDER/CONTRACTOR.

| ITEM | FILE NAME  | DESCRIPTION  | CUSTOMER DRAWING # | VENDOR PART # | QTY. |
|------|------------|--|--------------------|---------------|------|
| 1    | BOLT, PACK | BOLT, FLANGE, 3/8-16 X 1", PACK (50)                     | HPS1916            | HPS1916       | 1    |
| 2    | 00017133   | LINER TRACK, BACK  | 00017133           | 00017133      | 3    |
| 3    | 00017129   | PANEL, BACK, 2' LONG, 3' TREAD, OPEN POUR, TANNING LEDGE | 00017129           | 00017129      | 1    |
| 4    | 00017118   | SUPPORT, CENTER, 3' TREAD, OPEN POUR                     | 00017118           | 00017118      | 1    |
| 5    | 00017131   | TREAD, STEP, 3' TREAD, OPEN POUR, "B", 2' LONG           | 00017131           | 00017131      | 2    |
| 6    | 00017132   | TREAD, STEP, 3' TREAD, OPEN POUR, "D", 2' LONG           | 00017132           | 00017132      | 1    |
| 7    | SBRACE     | BRACE, FOLD OVER WITH TURNBUCKLE, STEEL, HPSFOB          | HPSFOB             | HPSFOB        | 1    |

|  |                   |   |                              |                                |  |            |
|--|-------------------|---|------------------------------|--------------------------------|--|------------|
| ENGINEERING DRAWING NUMBER<br>00017128 | WEIGHT:<br>lbs    | UNLESS OTHERWISE SPECIFIED<br>DIMENSIONS ARE IN INCHES<br>TOLERANCES<br>DECIMALS: X ± .1<br>XX ± .01<br>XXX ± .001<br>XXXX ± .0005<br><br>ANGULAR: X ± 0.5<br>THIRD ANGLE PROJECTION<br> | DESIGNED BY:<br>MWILLIAMS    | CREATION DATE:<br>01/08/18     | SAMSON STEEL   |            |
|  | VOLUME:<br>Inch³  |   | DETAILED BY:<br>MWILLIAMS    | DETAILED DATE:<br>01/30/18     |  |            |
|  | COLOR:<br>NA      |   | LAST REVISED BY:<br>mwiliams | LAST REVISED DATE:<br>01/31/18 | TITLE: STEP, 2' X 8", 3' TREAD, OPEN POUR, TANNING LEDGE, SUB ASSEMBLY |            |
|  | HEAT TREAT:<br>NA |   | MATERIAL:                    |                                |  |            |
|  | FINISH:<br>NA     |   |                              |                                | PART NUMBER:<br>HSM17128   |            |
|  | TEXTURE:<br>192   |   |                              |                                | SCALE:<br>1:32<br>SHEET:<br>5 OF 5                                     | SIZE:<br>B |