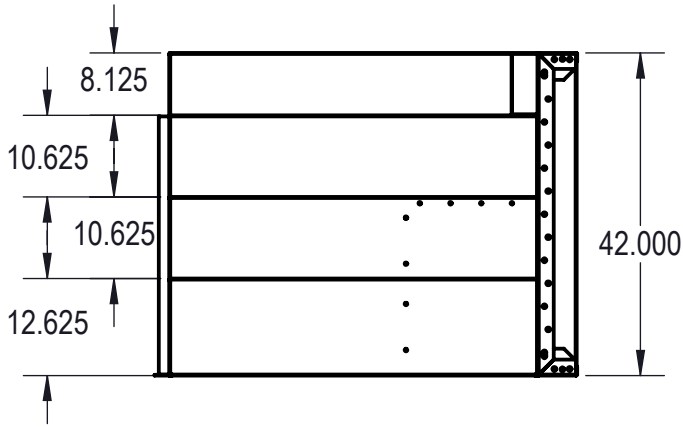
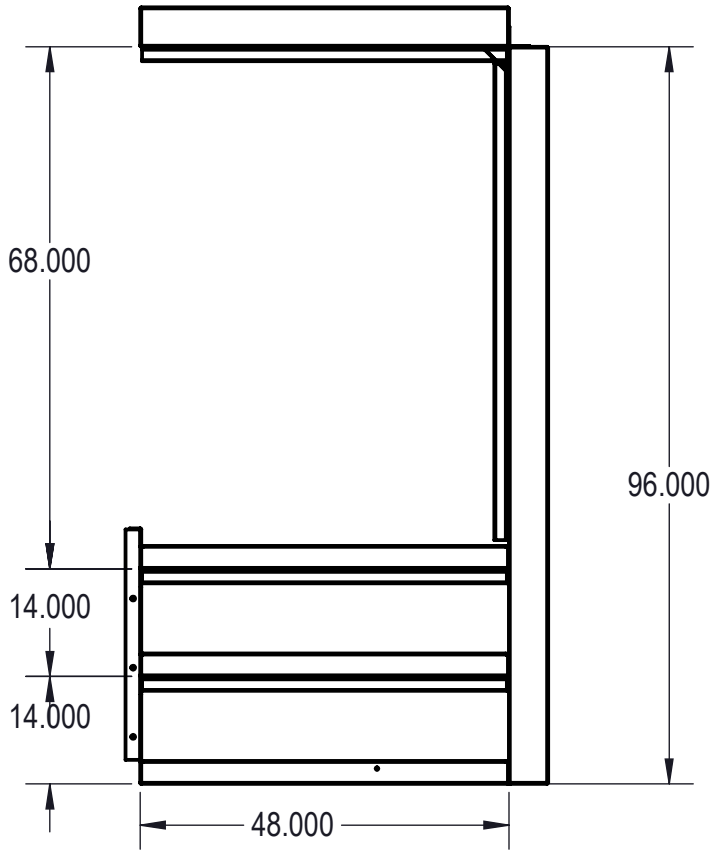
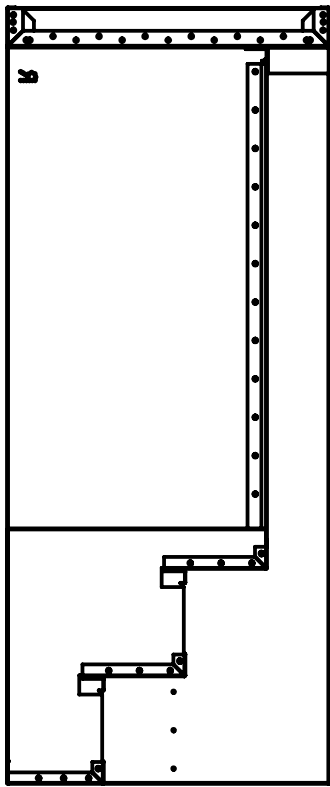
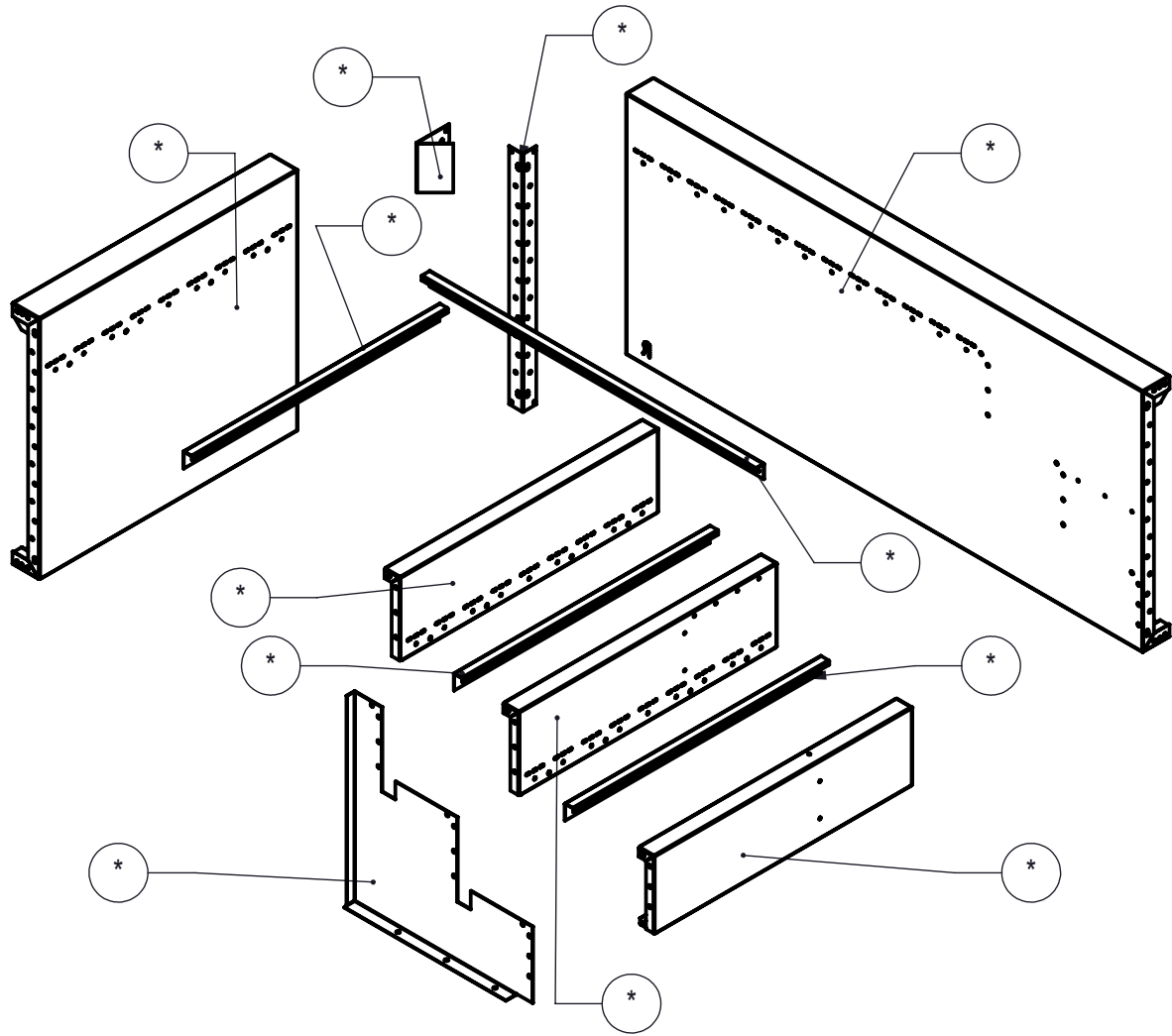


REVISION HISTORY				
REV	DESCRIPTION	DATE	ECO	BY
A	RELEASED FOR PRODUCTION	01/18/18		MWILLIAMS



- NOTES:**
- THESE ARE FINISHED DIMENSIONS READY FOR THE LINER.
 - DIMENSIONS ARE FROM INSIDE POOL PANELS.
 - ROPE AND FLOAT ASSEMBLY SHOULD BE INSTALLED IN ACCORDANCE WITH CURRENT ANSI/ASPS/ICC REGULATIONS
 - HYDRA LINER TRACK FOR STEPS IS INSTALLED WITH THE BARB FACING THE RISER WALL ON THE STEP.
- EXCAVATION NOTES:**
- ROUGH EXCAVATION SHOULD BE 2" DEEPER IN EACH INSTANCE.
 - SOIL TO HAVE MINIMUM BEARING CAPACITY OF 1500 PSF.
 - LOCATE TOP OF POOL AT LEAST 6" ABOVE THE SURROUNDING LAND ELEVATION.
 - SEE "OVER DIG DETAIL" FOR EXCAVATION AROUND POOL.
 - FILL VOIDS UNDER BASE OF PANELS AND TAMP WELL.
 - BACK FILL WITH NON-EXPANSIVE MATERIAL.
 - FOLLOW ALL CURRENT ANSI / APSP / ICC GUIDELINES FOR RESIDENTIAL POOLS
- IMPORTANT NOTES:**

THIS DOCUMENT IS FOR ILLUSTRATIVE PURPOSES ONLY. THE DEALER OR CONTRACTOR WHO SELLS OR INSTALLS YOUR POOL IS AN INDEPENDENT CONTRACTOR AND IS NOT AN AGENT OF THE MANUFACTURER. THE CONSTRUCTION METHODS ILLUSTRATED HERE ARE SUGGESTIONS AND APPLY ONLY TO NORMAL GROUND CONDITIONS. THERE MAY BE ADDITIONAL PRECAUTIONS AND/OR METHODS OF CONSTRUCTION. PROPER INSTALLATION IS THE RESPONSIBILITY OF THE DEALER/BUILDER/CONTRACTOR.

ITEM	FILE NAME	DESCRIPTION	CUSTOMER DRAWING #	VENDOR PART #	QTY.
1	BOLT, PACK	BOLT, FLANGE, 3/8-16 X 1", PACK (50)	HPS1916	HPS1916	2
2	00000051	CONNECTOR, CORNER, 2 1/2" X 1 1/2" X 90°	HPSD90C	HPSD90C	1
3	00017122	LINER TRACK, OPEN POUR	00017122	00017122	3
4	00017142	LINER TRACK, RIGHT OR LEFT	00017142	00017142	1
5	00017121	PANEL BACK, 4" LONG, 3 TREAD, OPEN POUR, TANNING LEDGE ASSEMBLY	00017121	00017121	1
6	00017140	PANEL STEP, 3 TREAD, BENCH, RIGHT SIDE, OPEN POUR, BENCH OPTION, ASSEMBLY	00017140	00017140	1
7	00004159	STEP, 3 TREAD, 90 DEGREE, CORNER, 6" RADIUS FILLER			1
8	00017118	SUPPORT, CENTER, 3 TREAD, OPEN POUR	00017118	00017118	1
9	00017136	TREAD, STEP, 3 TREAD, "C", BENCH OPTION, 4" LONG, RIGHT SIDE	00017136	00017136	1
10	00017123	TREAD, STEP, 3 TREAD, OPEN POUR, "B", 4"	00017123	00017123	1
11	00017138	TREAD, STEP, 3 TREAD, OPEN POUR, "D", 4" LONG, RIGHT SIDE	00017138	00017138	1

ENGINEERING DRAWING NUMBER
00017135

WEIGHT: lbs
VOLUME: Inch³
COLOR: NA
HEAT TREAT: NA
FINISH: NA
TEXTURE: 576

UNLESS OTHERWISE SPECIFIED

DIMENSIONS ARE IN INCHES
TOLERANCES
DECIMALS: X ± .1
 XX ± .01
 XXX ± .001
 XXXX ± .0005
ANGULAR: X ± 0.5
THIRD ANGLE PROJECTION

DESIGNED BY: MWILLIAMS
DETAILED BY: MWILLIAMS
LAST REVISED BY: mwilliams
MATERIAL:

CREATION DATE: 01/08/18
DETAILED DATE: 01/18/18
LAST REVISED DATE: 01/18/18

SAMSON STEEL

TITLE: STEP, 4" X 8", 6" RADIUS, 3 TREAD, RIGHT, OPEN POUR, TANNING LEDGE, SUB ASSEMBLY

PART NUMBER: HSM17135

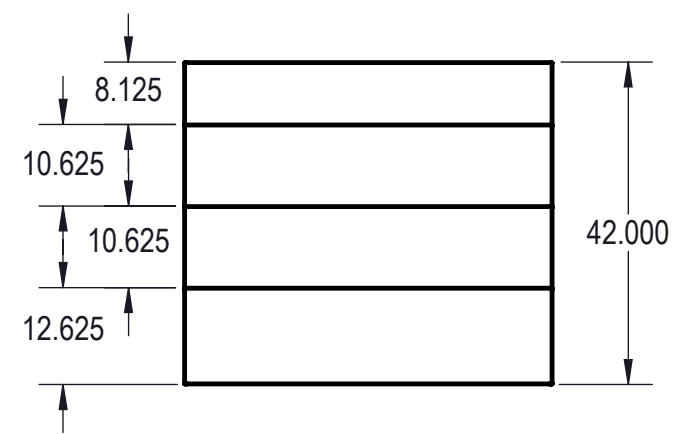
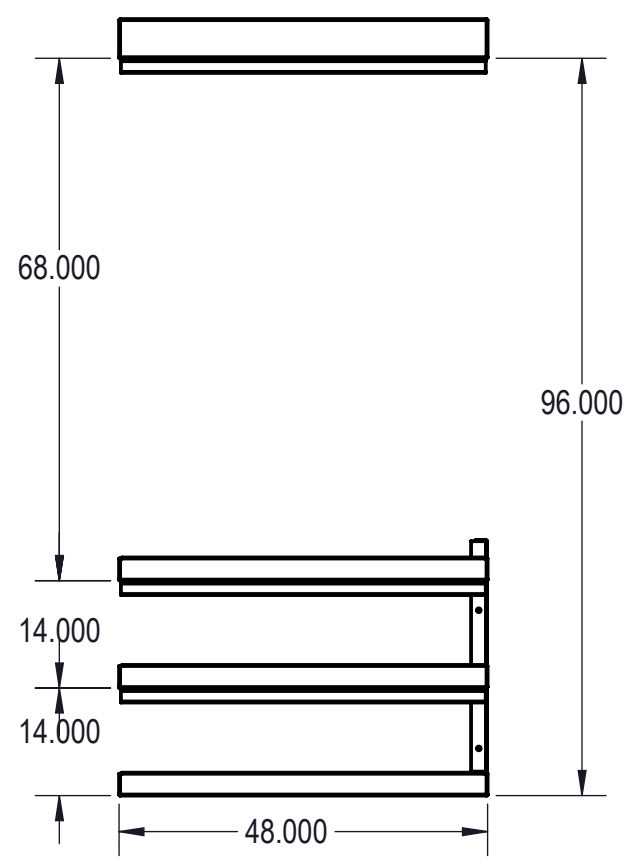
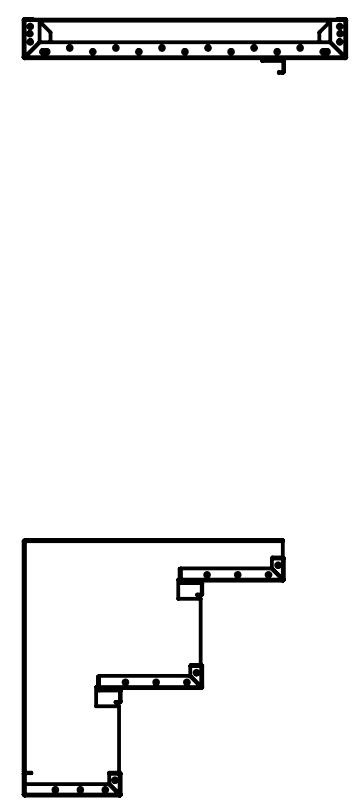
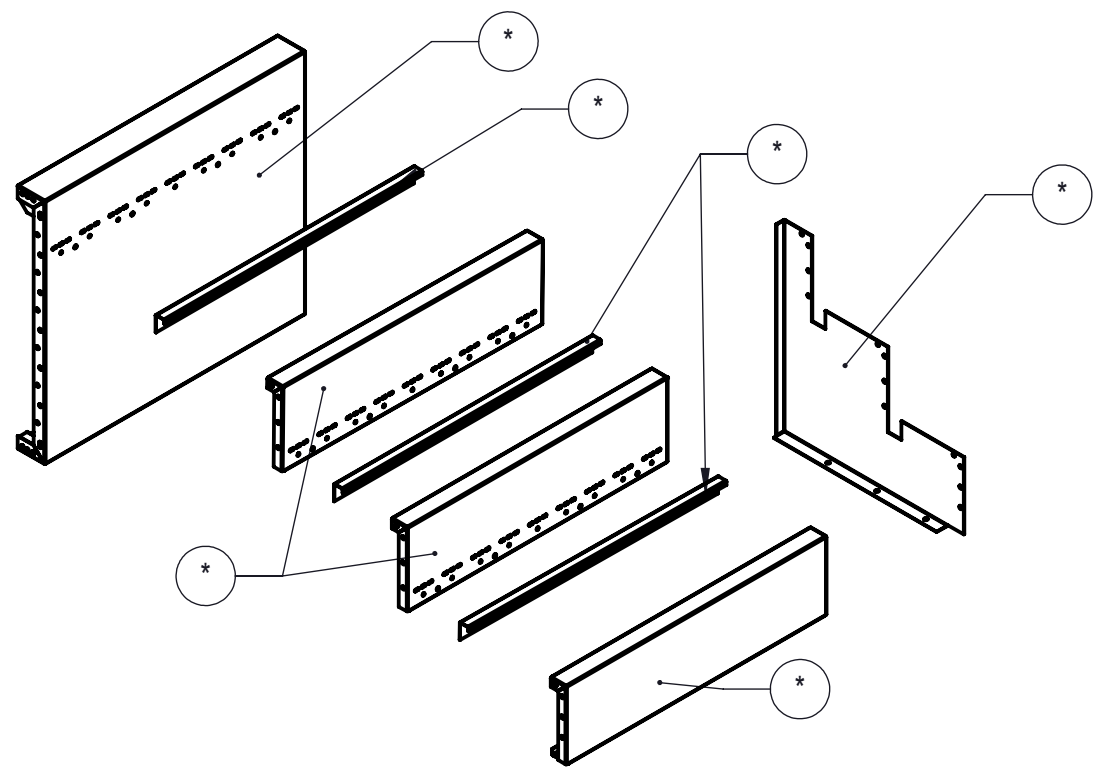
SCALE: 1:32
SHEET: 2 OF 4

SIZE: B

REV. LEVEL: A-REV. DATE: JULY 29, 2015-DOCUMENT ID: CF7310, ANSI B

C:\PDM\Working\STEPS\00017263

DRAWING NUMBER: 00017135
MADE FROM: 00017135
CHECK IN DATE/TIME: Thursday, January 18, 2018 12:33:52 PM



NOTES:

- 1. THESE ARE FINISHED DIMENSIONS READY FOR THE LINER.
- 2. DIMENSIONS ARE FROM INSIDE POOL PANELS.
- 3. ROPE AND FLOAT ASSEMBLY SHOULD BE INSTALLED IN ACCORDANCE WITH CURRENT ANSI/ASPS/ICC REGULATIONS
- 4. HYDRA LINER TRACK FOR STEPS IS INSTALLED WITH THE BARB FACING THE RISER WALL ON THE STEP.

EXCAVATION NOTES:

- 5. ROUGH EXCAVATION SHOULD BE 2" DEEPER IN EACH INSTANCE.
- 6. SOIL TO HAVE MINIMUM BEARING CAPACITY OF 1500 PSF.
- 7. LOCATE TOP OF POOL AT LEAST 6" ABOVE THE SURROUNDING LAND ELEVATION.
- 8. SEE "OVER DIG DETAIL" FOR EXCAVATION AROUND POOL.
- 9. FILL VOIDS UNDER BASE OF PANELS AND TAMP WELL.
- 10. BACK FILL WITH NON-EXPANSIVE MATERIAL.
- 11. FOLLOW ALL CURRENT ANSI / APSP / ICC GUIDELINES FOR RESIDENTIAL POOLS

IMPORTANT NOTES:

THIS DOCUMENT IS FOR ILLUSTRATIVE PURPOSES ONLY. THE DEALER OR CONTRACTOR WHO SELLS OR INSTALLS YOUR POOL IS AN INDEPENDENT CONTRACTOR AND IS NOT AN AGENT OF THE MANUFACTURER. THE CONSTRUCTION METHODS ILLUSTRATED HERE ARE SUGGESTIONS AND APPLY ONLY TO NORMAL GROUND CONDITIONS. THERE MAY BE ADDITIONAL PRECAUTIONS AND/OR METHODS OF CONSTRUCTION. PROPER INSTALLATION IS THE RESPONSIBILITY OF THE DEALER/BUILDER/CONTRACTOR.

ITEM	FILE NAME	DESCRIPTION	CUSTOMER DRAWING #	VENDOR PART #	QTY
1	BOLT, PACK	BOLT, FLANGE, 3/8-16 X 1", PACK (50)	HPS1916	HPS1916	1
2	00017122	LINER TRACK, OPEN POUR	00017122	00017122	3
3	00017121	PANEL BACK, 4' LONG, 3' TREAD, OPEN POUR, TANNING LEDGE ASSEMBLY	00017121	00017121	1
4	00017118	SUPPORT, CENTER, 3 TREAD, OPEN POUR	00017118	00017118	1
5	00017123	TREAD, STEP, 3 TREAD, OPEN POUR, "B", 4'	00017123	00017123	2
6	00017124	TREAD, STEP, 3 TREAD, OPEN POUR, "D", 4' LONG	00017124	00017124	1

ENGINEERING DRAWING NUMBER
00017119

WEIGHT:
lbs

VOLUME:
Inch³

COLOR:
NA

HEAT TREAT:
NA

FINISH:
NA

TEXTURE:
384

UNLESS OTHERWISE SPECIFIED

DIMENSIONS ARE IN INCHES
TOLERANCES
DECIMALS: X ± .1
 XX ± .01
 XXX ± .001
 XXXX ± .0005

ANGULAR: X ± 0.5

THIRD ANGLE PROJECTION

DESIGNED BY:
MWILLIAMS

DETAILED BY:
MWILLIAMS

LAST REVISED BY:
mwilliams

MATERIAL:

CREATION DATE:
01/05/18

DETAILED DATE:
01/18/18

LAST REVISED DATE:
01/18/18

SAMSON STEEL

TITLE: STEP, 4' X 8', 3 TREAD, OPEN POUR, TANNING LEDGE, SUB ASSEMBLY

PART NUMBER:
HSM17119

SCALE:
1:32

SHEET:
4 OF 4

SIZE:
B