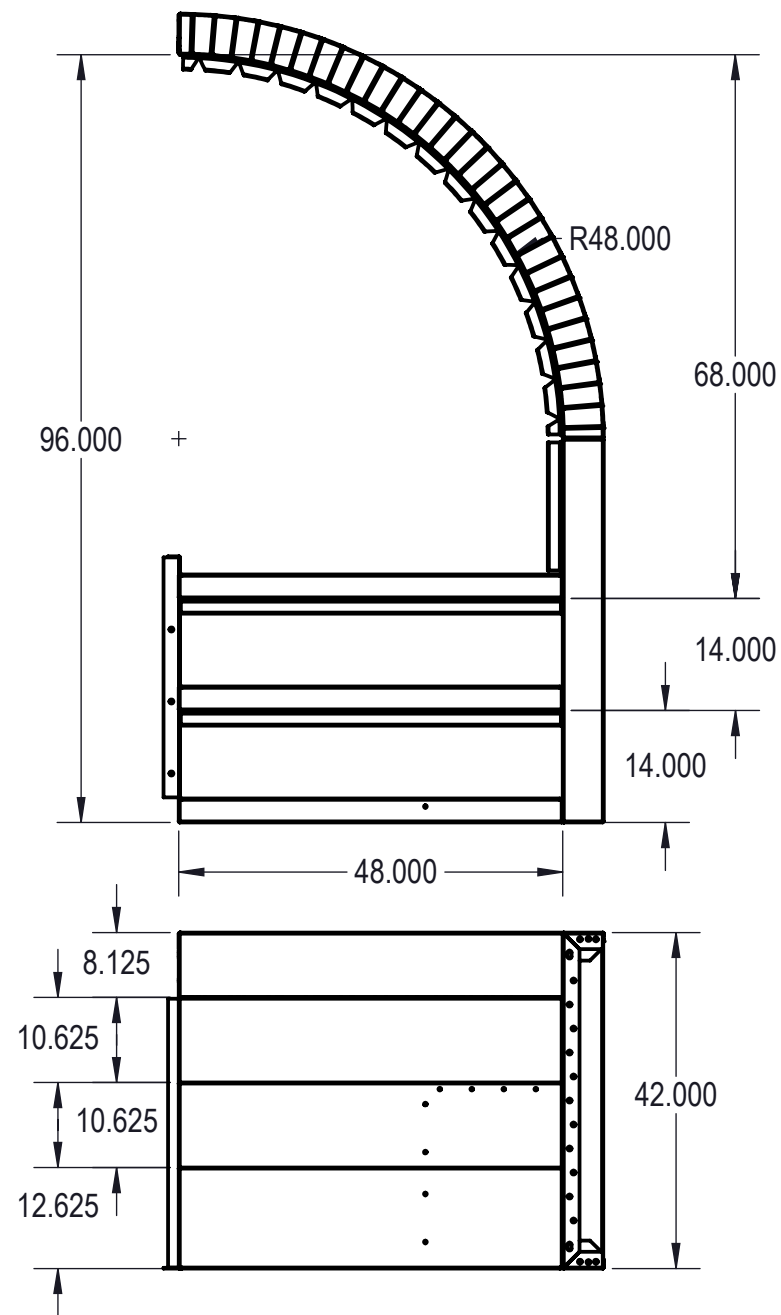
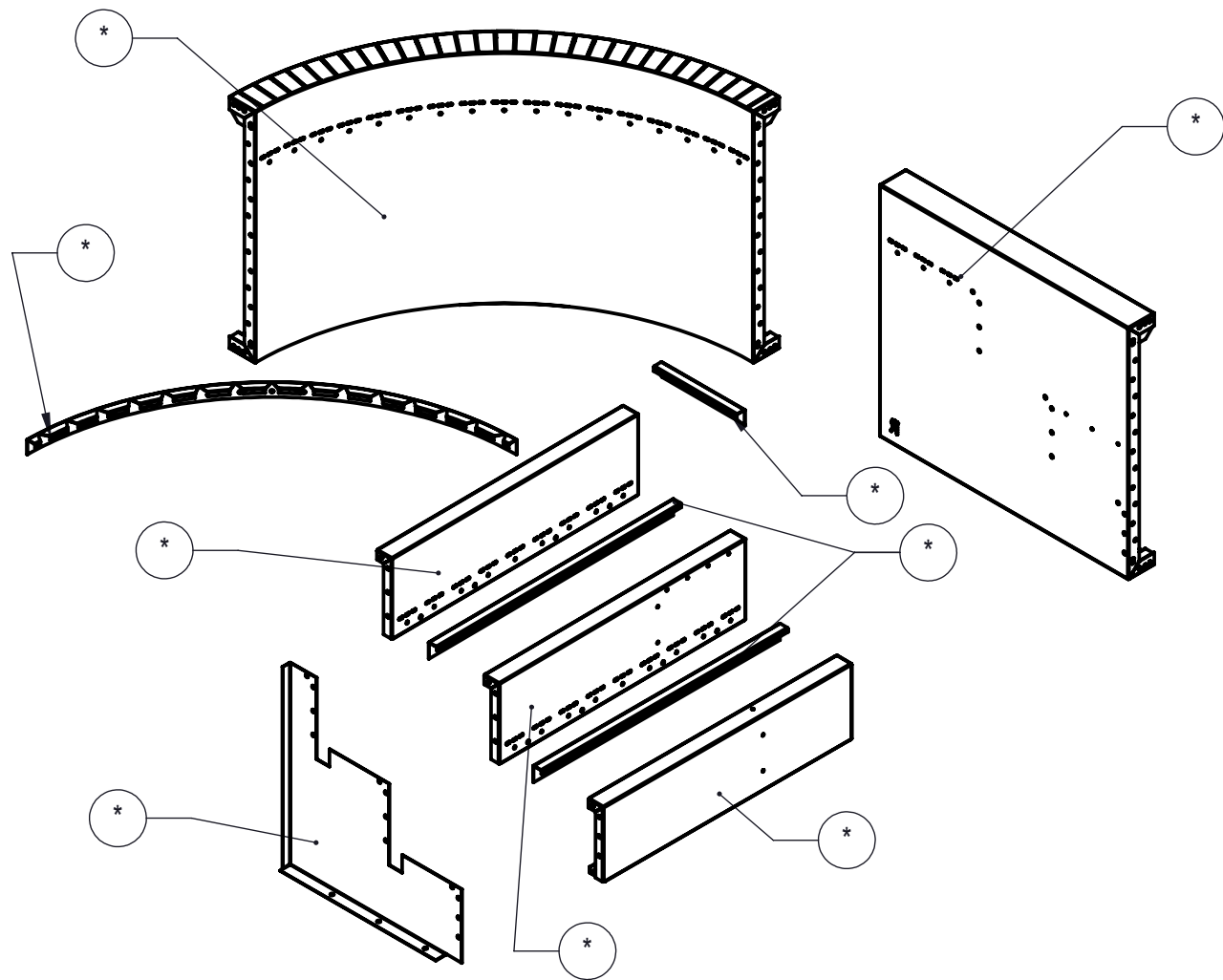


REVISION HISTORY				
REV.	DESCRIPTION	DATE	ECO	BY
A	RELEASED FOR PRODUCTION	01/30/18		MWILLIAMS
B	RELEASED FPR PRODUCTION	01/31/18		MWILLIAMS
C	RELEASED FOR PRODUCTION	02/01/18		MWILLIAMS



NOTES:

1. THESE ARE FINISHED DIMENSIONS READY FOR THE LINER.
2. DIMENSIONS ARE FROM INSIDE POOL PANELS.
3. ROPE AND FLOAT ASSEMBLY SHOULD BE INSTALLED IN ACCORDANCE WITH CURRENT ANSI/SPS/ICC REGULATIONS
4. HYDRA LINER TRACK FOR STEPS IS INSTALLED WITH THE BARB FACING THE RISER WALL ON THE STEP.


EXCAVATION NOTES:

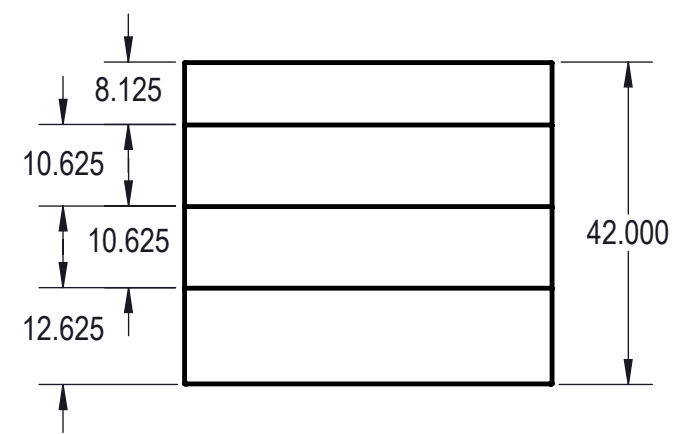
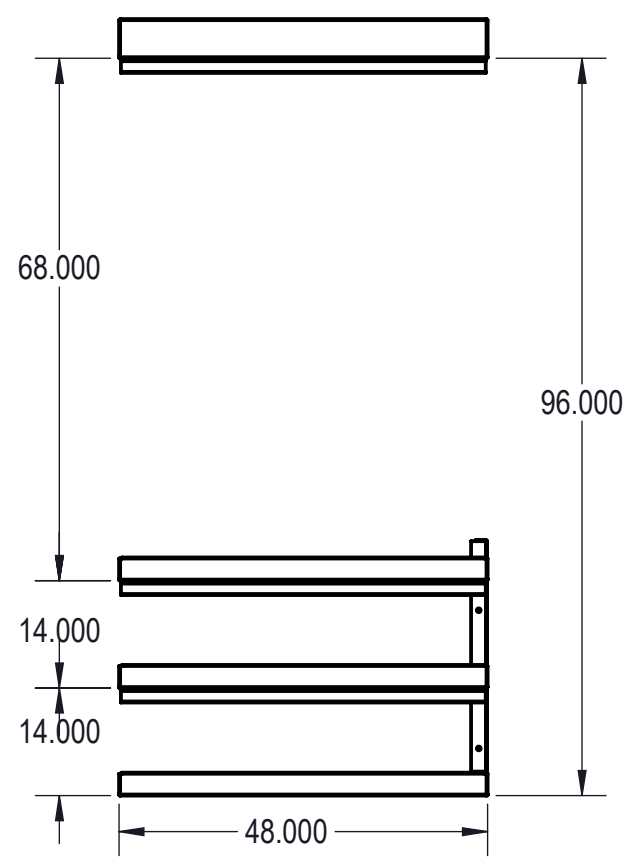
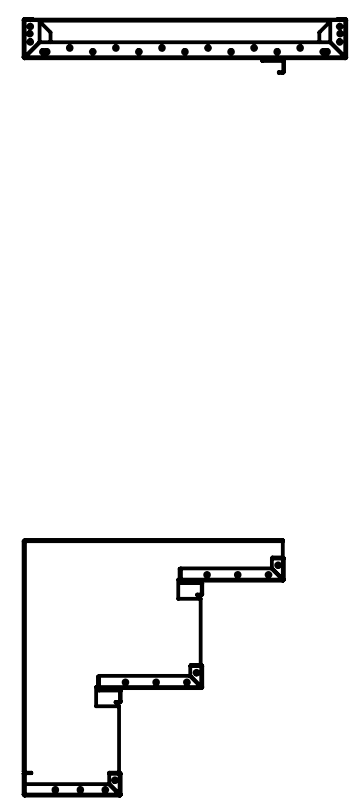
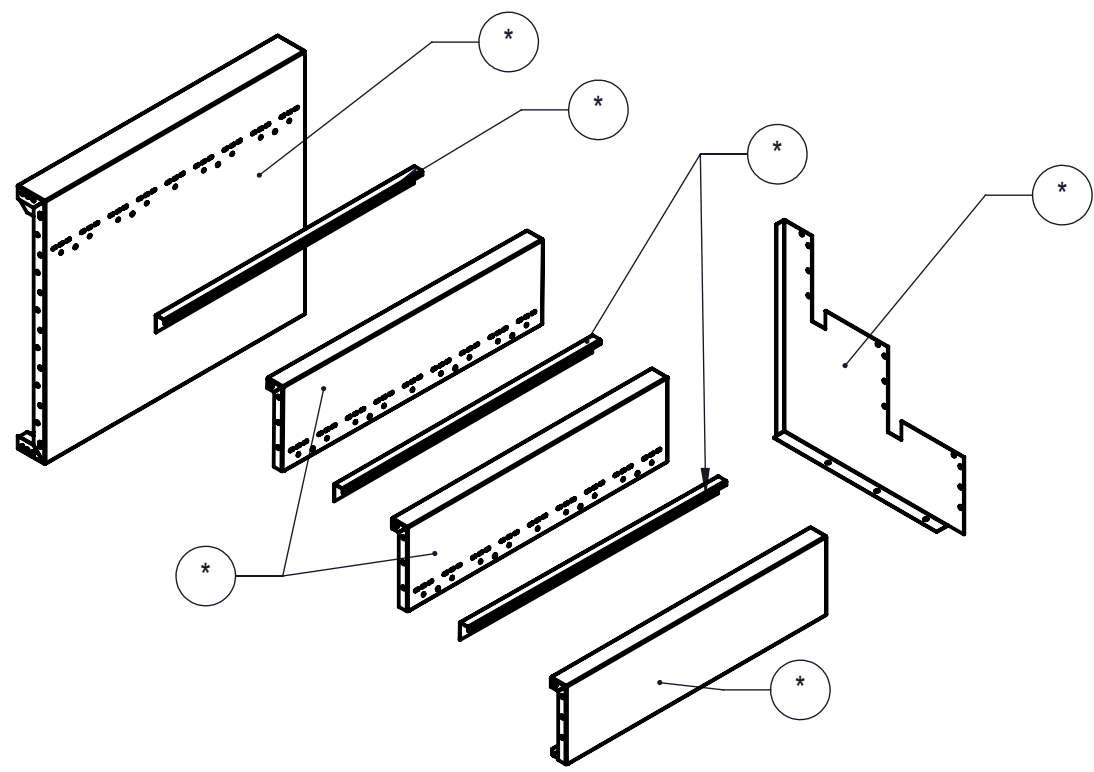
5. ROUGH EXCAVATION SHOULD BE 2" DEEPER IN EACH INSTANCE.
6. SOIL TO HAVE MINIMUM BEARING CAPACITY OF 1500 PSF.
7. LOCATE TOP OF POOL AT LEAST 6" ABOVE THE SURROUNDING LAND ELEVATION.
8. SEE "OVER DIG DETAIL" FOR EXCAVATION AROUND POOL.
9. FILL VOIDS UNDER BASE OF PANELS AND TAMP WELL.
10. BACK FILL WITH NON-EXPANSIVE MATERIAL.
11. FOLLOW ALL CURRENT ANSI / APSP / ICC GUIDELINES FOR RESIDENTIAL POOLS

IMPORTANT NOTES:

THIS DOCUMENT IS FOR ILLUSTRATIVE PURPOSES ONLY. THE DEALER OR CONTRACTOR WHO SELLS OR INSTALLS YOUR POOL IS AN INDEPENDENT CONTRACTOR AND IS NOT AN AGENT OF THE MANUFACTURER. THE CONSTRUCTION METHODS ILLUSTRATED HERE ARE SUGGESTIONS AND APPLY ONLY TO NORMAL GROUND CONDITIONS. THERE MAY BE ADDITIONAL PRECAUTIONS AND/OR METHODS OF CONSTRUCTION. PROPER INSTALLATION IS THE RESPONSIBILITY OF THE DEALER/BUILDER/CONTRACTOR.

ITEM	FILE NAME	DESCRIPTION	CUSTOMER DRAWING #	VENDOR PART #	QTY
1	BOLT, PACK	BOLT, FLANGE, 3/8-16 X 1", PACK (50)	HPS1916	HPS1916	2
2	SBRACE	BRACE, FOLD OVER WITH TURNBUCKLE, STEEL, HPSFOB	HPSFOB	HPSFOB	1
3	00017122	LINER TRACK, OPEN POUR	00017122	00017122	2
4	00017230	LINER TRACK, RIGHT OR LEFT	00017230	00017230	1
5	00017235	LINER TRACK, RIGHT OR LEFT	00017235	00017235	1
6	00017233	PANEL, STEP, 3 TREAD, BENCH, RIGHT SIDE, BENCH OPTION	00017233	00017233	1
7	00017229	PANEL, 4" RADIUS, 3 TREAD, OPEN POUR, TANNING LEDGE, ASSEMBLY	00017229	00017229	1
8	00017118	SUPPORT, CENTER, 3 TREAD, OPEN POUR	00017118	00017118	1
9	00017136	1 TREAD, STEP, 3 TREAD, "C", BENCH OPTION, 4" LONG, RIGHT SIDE	00017136	00017136	1
10	00017123	TREAD, STEP, 3 TREAD, OPEN POUR, "B", 4"	00017123	00017123	1
11	00017138	TREAD, STEP, 3 TREAD, OPEN POUR, "D", 4" LONG, RIGHT SIDE	00017138	00017138	1

ENGINEERING DRAWING NUMBER 000017228	WEIGHT:		UNLESS OTHERWISE SPECIFIED DIMENSIONS ARE IN INCHES TOLERANCES DECIMALS: X ± .1 XX ± .01 XXX ± .001 XXXX ± .0005 ANGULAR: X ± 0.5 THIRD ANGLE PROJECTION 	DESIGNED BY:	CREATION DATE:	SAMSON STEEL TITLE: STEP, 4' X 8', 4' RADIUS, 3 TREAD, RIGHT, OPEN POUR, TANNING LEDGE, SUB ASSEMBLY <div>PART NUMBER: HSM17228</div> <div>SCALE: 1:32 SHEET: 2 OF 5</div> <div>SIZE: B</div>
	lbs	VOLUME:		MWILLIAMS	01/15/18	
	Inch³			DETAILED BY:	DETAILED DATE:	
				MWILLIAMS	02/01/18	
	COLOR:			LAST REVISED BY:	LAST REVISED DATE:	
	NA			mwiliams	02/01/18	
	HEAT TREAT:			MATERIAL:		
	NA					
	FINISH:					
	TEXTURE:					
536						



NOTES:

- 1. THESE ARE FINISHED DIMENSIONS READY FOR THE LINER.
- 2. DIMENSIONS ARE FROM INSIDE POOL PANELS.
- 3. ROPE AND FLOAT ASSEMBLY SHOULD BE INSTALLED IN ACCORDANCE WITH CURRENT ANSI/ASPS/ICC REGULATIONS
- 4. HYDRA LINER TRACK FOR STEPS IS INSTALLED WITH THE BARB FACING THE RISER WALL ON THE STEP.

EXCAVATION NOTES:

- 5. ROUGH EXCAVATION SHOULD BE 2" DEEPER IN EACH INSTANCE.
- 6. SOIL TO HAVE MINIMUM BEARING CAPACITY OF 1500 PSF.
- 7. LOCATE TOP OF POOL AT LEAST 6" ABOVE THE SURROUNDING LAND ELEVATION.
- 8. SEE "OVER DIG DETAIL" FOR EXCAVATION AROUND POOL.
- 9. FILL VOIDS UNDER BASE OF PANELS AND TAMP WELL.
- 10. BACK FILL WITH NON-EXPANSIVE MATERIAL.
- 11. FOLLOW ALL CURRENT ANSI / APSP / ICC GUIDELINES FOR RESIDENTIAL POOLS

IMPORTANT NOTES:

THIS DOCUMENT IS FOR ILLUSTRATIVE PURPOSES ONLY. THE DEALER OR CONTRACTOR WHO SELLS OR INSTALLS YOUR POOL IS AN INDEPENDENT CONTRACTOR AND IS NOT AN AGENT OF THE MANUFACTURER. THE CONSTRUCTION METHODS ILLUSTRATED HERE ARE SUGGESTIONS AND APPLY ONLY TO NORMAL GROUND CONDITIONS. THERE MAY BE ADDITIONAL PRECAUTIONS AND/OR METHODS OF CONSTRUCTION. PROPER INSTALLATION IS THE RESPONSIBILITY OF THE DEALER/BUILDER/CONTRACTOR.

ITEM	FILE NAME	DESCRIPTION	CUSTOMER DRAWING #	VENDOR PART #	QTY.
1	BOLT, PACK	BOLT, FLANGE, 3/8-16 X 1", PACK (50)	HPS1916	HPS1916	1
2	SBRACE	BRACE, FOLD OVER WITH TURNBUCKLE, STEEL, HPSFOB	HPSFOB	HPSFOB	1
3	00017122	LINER TRACK, OPEN POUR	00017122	00017122	3
4	00017121	PANEL BACK, 4' LONG, 3 TREAD, OPEN POUR, TANNING LEDGE ASSEMBLY	00017121	00017121	1
5	00017118	SUPPORT, CENTER, 3 TREAD, OPEN POUR	00017118	00017118	1
6	00017123	TREAD, STEP, 3 TREAD, OPEN POUR, "B", 4'	00017123	00017123	2
7	00017124	TREAD, STEP, 3 TREAD, OPEN POUR, "D", 4' LONG	00017124	00017124	1

ENGINEERING DRAWING NUMBER
00017119

WEIGHT:
lbs

VOLUME:
Inch³

COLOR:
NA

HEAT TREAT:
NA

FINISH:
NA

TEXTURE:
384

UNLESS OTHERWISE SPECIFIED

DIMENSIONS ARE IN INCHES
TOLERANCES
DECIMALS: X ± .1
 XX ± .01
 XXX ± .001
 XXXX ± .0005

ANGULAR: X ± 0.5

THIRD ANGLE PROJECTION

DESIGNED BY:
MWILLIAMS

DETAILED BY:
MWILLIAMS

LAST REVISED BY:
mwilliams

MATERIAL:

CREATION DATE:
01/05/18

DETAILED DATE:
02/01/18

LAST REVISED DATE:
02/01/18

SAMSON STEEL

TITLE: STEP, 4' X 8', 3 TREAD, OPEN POUR, TANNING LEDGE, SUB ASSEMBLY

PART NUMBER:
HSM17119

SCALE:
1:32

SHEET:
4 OF 5

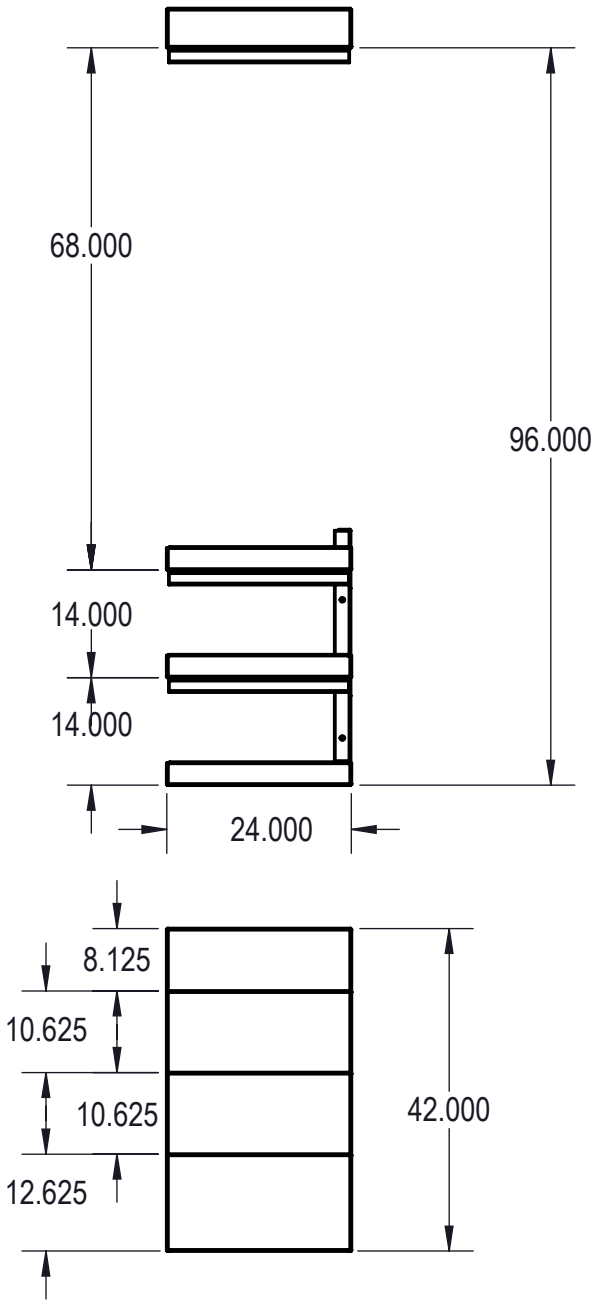
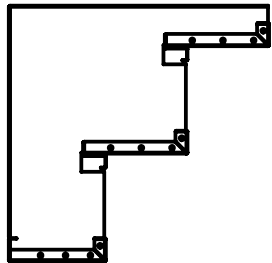
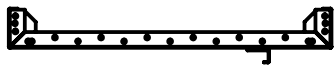
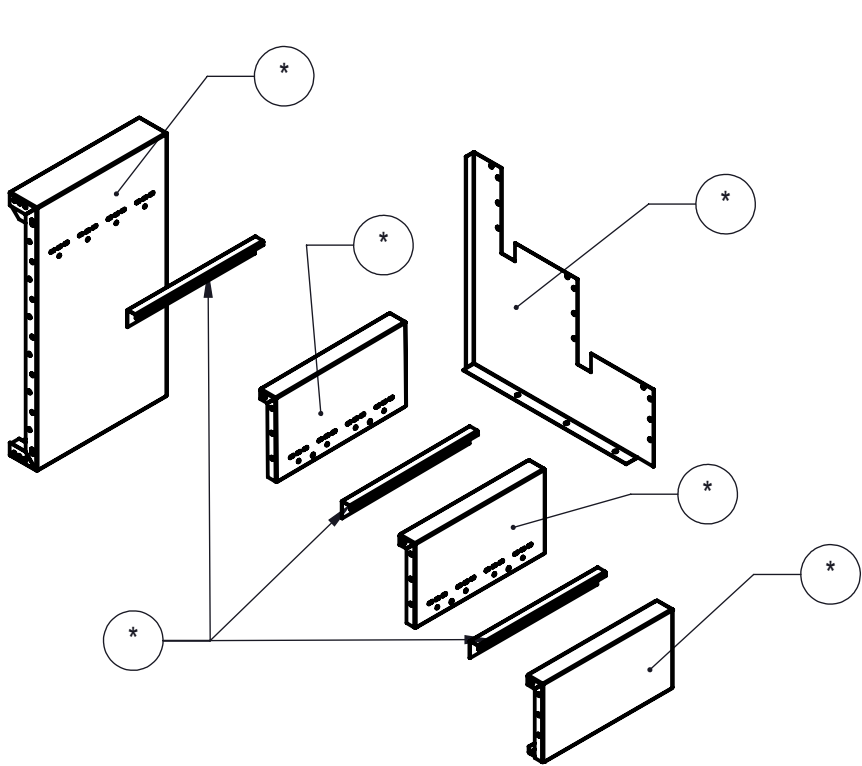
SIZE:
B

REVISION HISTORY				
REV.	DESCRIPTION	DATE	ECO	BY
B	ADDED TEXTURE	01/30/18		MWILLIAMS
C	UPDATED PART #	01/31/18		MWILLIAMS
D	RELEASED FOR PRODUCTION	01/31/18		MWILLIAMS

JUROR NUMBER:

MADE FROM:

CHECK IN DATE/TIME: *Thursday, February 01, 2018 10:24:59 AM*



NOTES:

- THESE ARE FINISHED DIMENSIONS READY FOR THE LINER.
- DIMENSIONS ARE FROM INSIDE POOL PANELS.
- ROPE AND FLOAT ASSEMBLY SHOULD BE INSTALLED IN ACCORDANCE WITH CURRENT ANSI/APSP/ICC REGULATIONS
- HYDRA LINER TRACK FOR STEPS IS INSTALLED WITH THE BARB FACING THE RISER WALL ON THE STEP.

EXCAVATION NOTES:

- ROUGH EXCAVATION SHOULD BE 2" DEEPER IN EACH INSTANCE.
- SOIL TO HAVE MINIMUM BEARING CAPACITY OF 1500 PSF.
- LOCATE TOP OF POOL AT LEAST 6" ABOVE THE SURROUNDING LAND ELEVATION.
- SEE "OVER DIG DETAIL" FOR EXCAVATION AROUND POOL.
- FILL VOIDS UNDER BASE OF PANELS AND TAMP WELL.
- BACK FILL WITH NON-EXPANSIVE MATERIAL.
- FOLLOW ALL CURRENT ANSI / APSP / ICC GUIDELINES FOR RESIDENTIAL POOLS

IMPORTANT NOTES:

THIS DOCUMENT IS FOR ILLUSTRATIVE PURPOSES ONLY. THE DEALER OR CONTRACTOR WHO SELLS OR INSTALLS YOUR POOL IS AN INDEPENDENT CONTRACTOR AND IS NOT AN AGENT OF THE MANUFACTURER. THE CONSTRUCTION METHODS ILLUSTRATED HERE ARE SUGGESTIONS AND APPLY ONLY TO NORMAL GROUND CONDITIONS. THERE MAY BE ADDITIONAL PRECAUTIONS AND/OR METHODS OF CONSTRUCTION. PROPER INSTALLATION IS THE RESPONSIBILITY OF THE DEALER/BUILDER/CONTRACTOR.

ITEM	FILE NAME	DESCRIPTION	CUSTOMER DRAWING #	VENDOR PART #	QTY.
1	BOLT, PACK	BOLT, FLANGE, 3/8-16 X 1", PACK (50)	HPS1916	HPS1916	1
2	SBRACE	BRACE, FOLD OVER WITH TURNBUCKLE, STEEL, HPSFOB	HPSFOB	HPSFOB	1
3	00017133	LINER TRACK, BACK	00017133	00017133	3
4	00017129	PANEL BACK, 2' LONG, 3' TREAD, OPEN POUR, TANNING LEDGE	00017129	00017129	1
5	00017118	SUPPORT, CENTER, 3' TREAD, OPEN POUR	00017118	00017118	1
6	00017131	TREAD, STEP, 3' TREAD, OPEN POUR, "B", 2' LONG	00017131	00017131	2
7	00017132	TREAD, STEP, 3' TREAD, OPEN POUR, "D", 2' LONG	00017132	00017132	1

ENGINEERING DRAWING NUMBER 00017128	WEIGHT: lbs	UNLESS OTHERWISE SPECIFIED DIMENSIONS ARE IN INCHES TOLERANCES DECIMALS: X ± .1 XX ± .01 XXX ± .001 XXXX ± .0005 ANGULAR: X ± 0.5 THIRD ANGLE PROJECTION 	DESIGNED BY: MWILLIAMS	CREATION DATE: 01/08/18	SAMSON STEEL	
	VOLUME: Inch³		DETAILED BY: MWILLIAMS	DETAILED DATE: 02/01/18		
	COLOR: NA		LAST REVISED BY: mwilliams	LAST REVISED DATE: 02/01/18	TITLE: STEP, 2' X 8', 3' TREAD, OPEN POUR, TANNING LEDGE, SUB ASSEMBLY	
	HEAT TREAT: NA		MATERIAL:			
	FINISH: NA				PART NUMBER: HSM17128	
	TEXTURE: 192				SCALE: 1:32 SHEET: 5 OF 5	SIZE: B