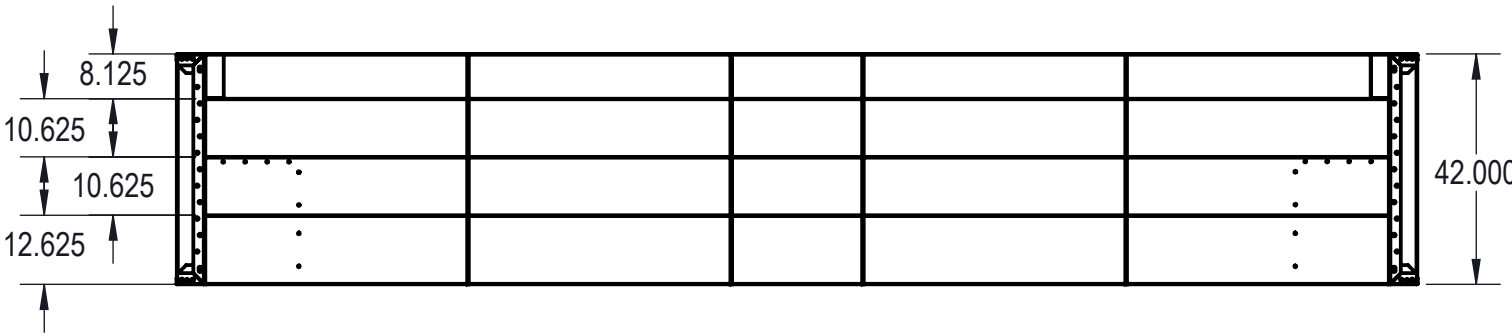
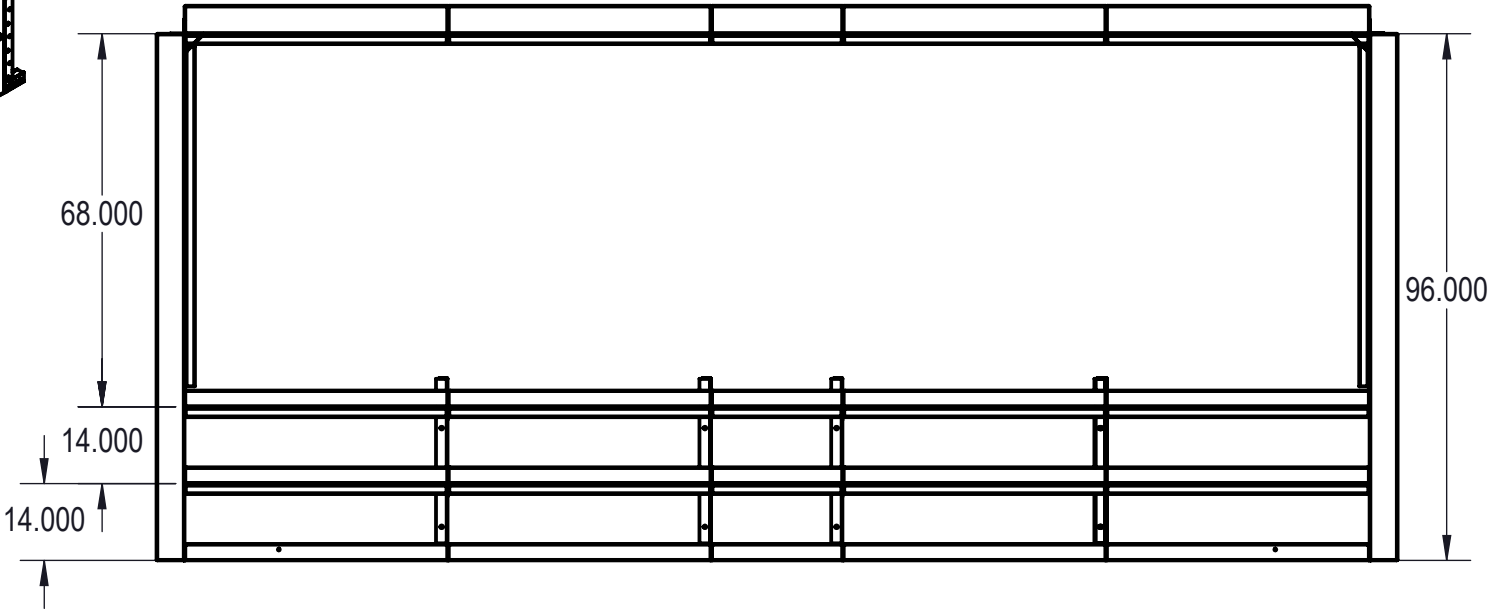
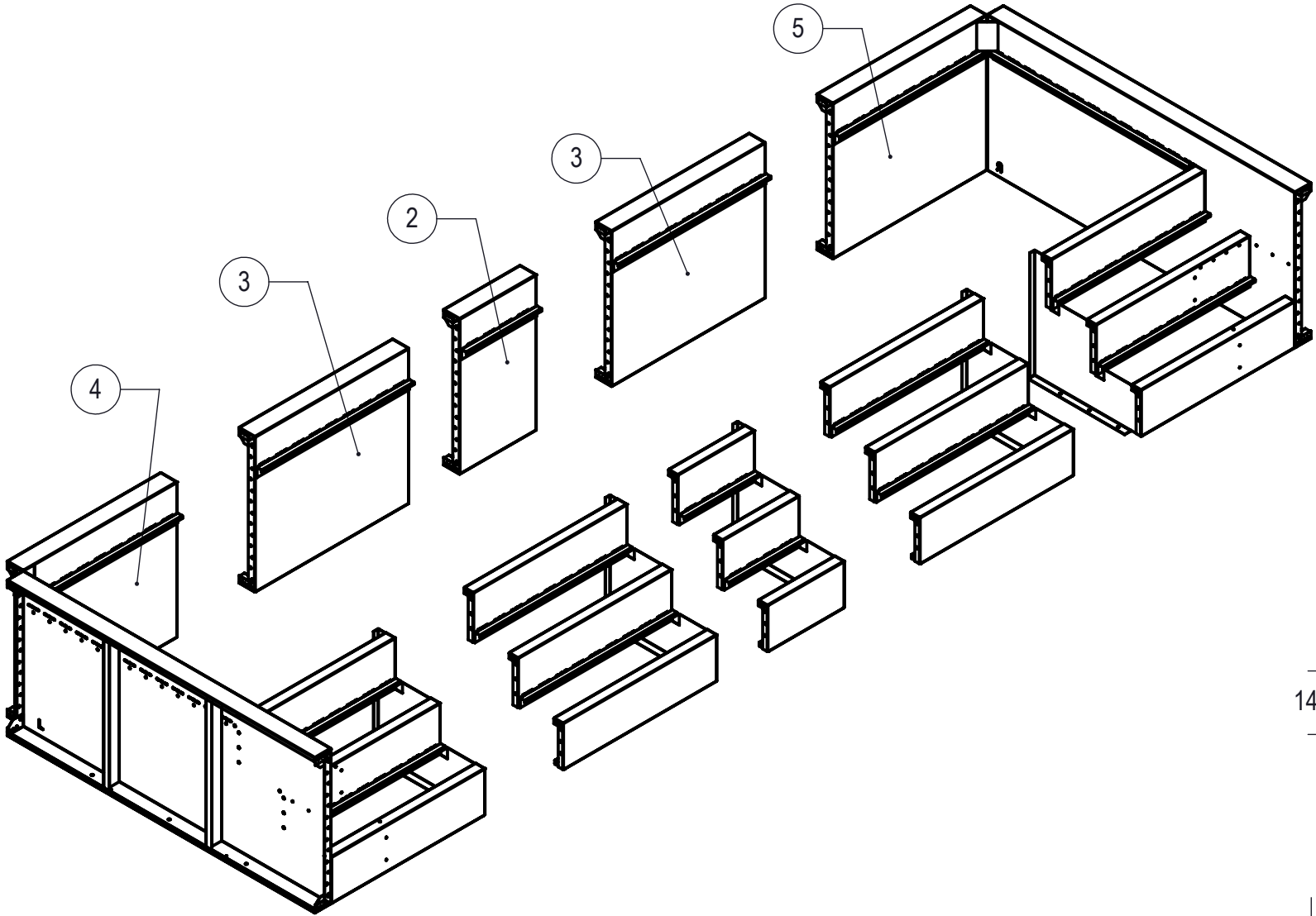


REVISION HISTORY				
REV.	DESCRIPTION	DATE	ECO	BY
A	RELEASED FOR PRODUCTION	01/31/18		MWILLIAMS
B	RELEASED FOR PRODUCTION	01/31/18		MWILLIAMS

DRAWING NUMBER:

MADE FROM:

CHECK IN DATE/TIME: Wednesday, January 31, 2018 11:22:46 AM



NOTES:

- THESE ARE FINISHED DIMENSIONS READY FOR THE LINER.
- DIMENSIONS ARE FROM INSIDE POOL PANELS.
- ROPE AND FLOAT ASSEMBLY SHOULD BE INSTALLED IN ACCORDANCE WITH CURRENT ANSI/ASPS/ICC REGULATIONS
- HYDRA LINER TRACK FOR STEPS IS INSTALLED WITH THE BARB FACING THE RISER WALL ON THE STEP.


EXCAVATION NOTES:

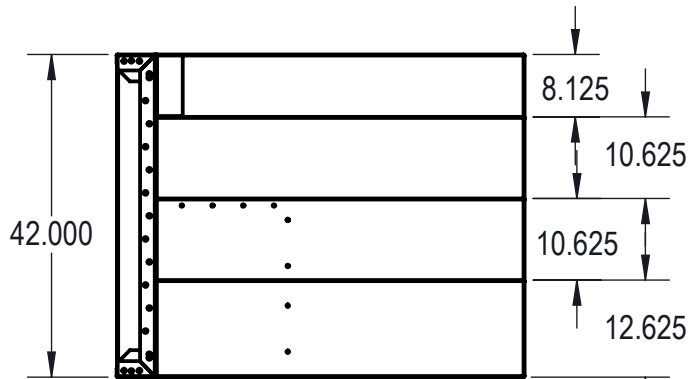
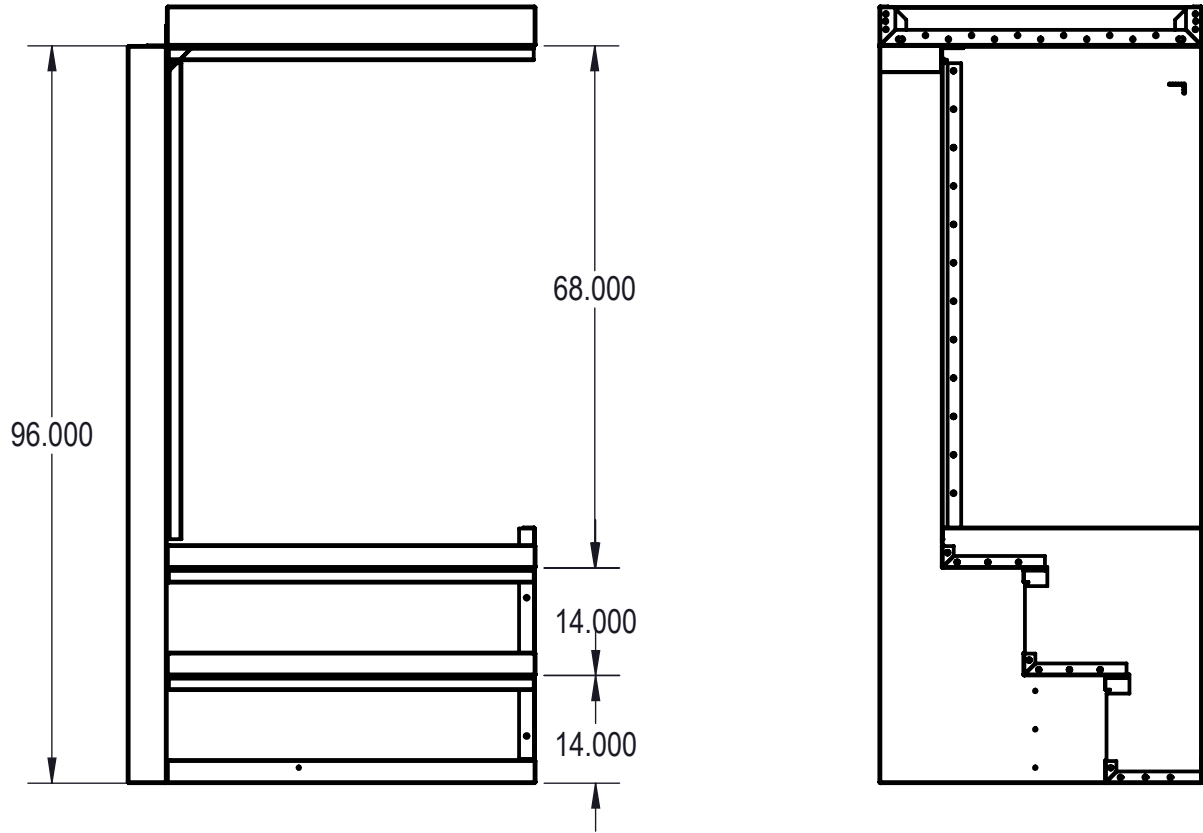
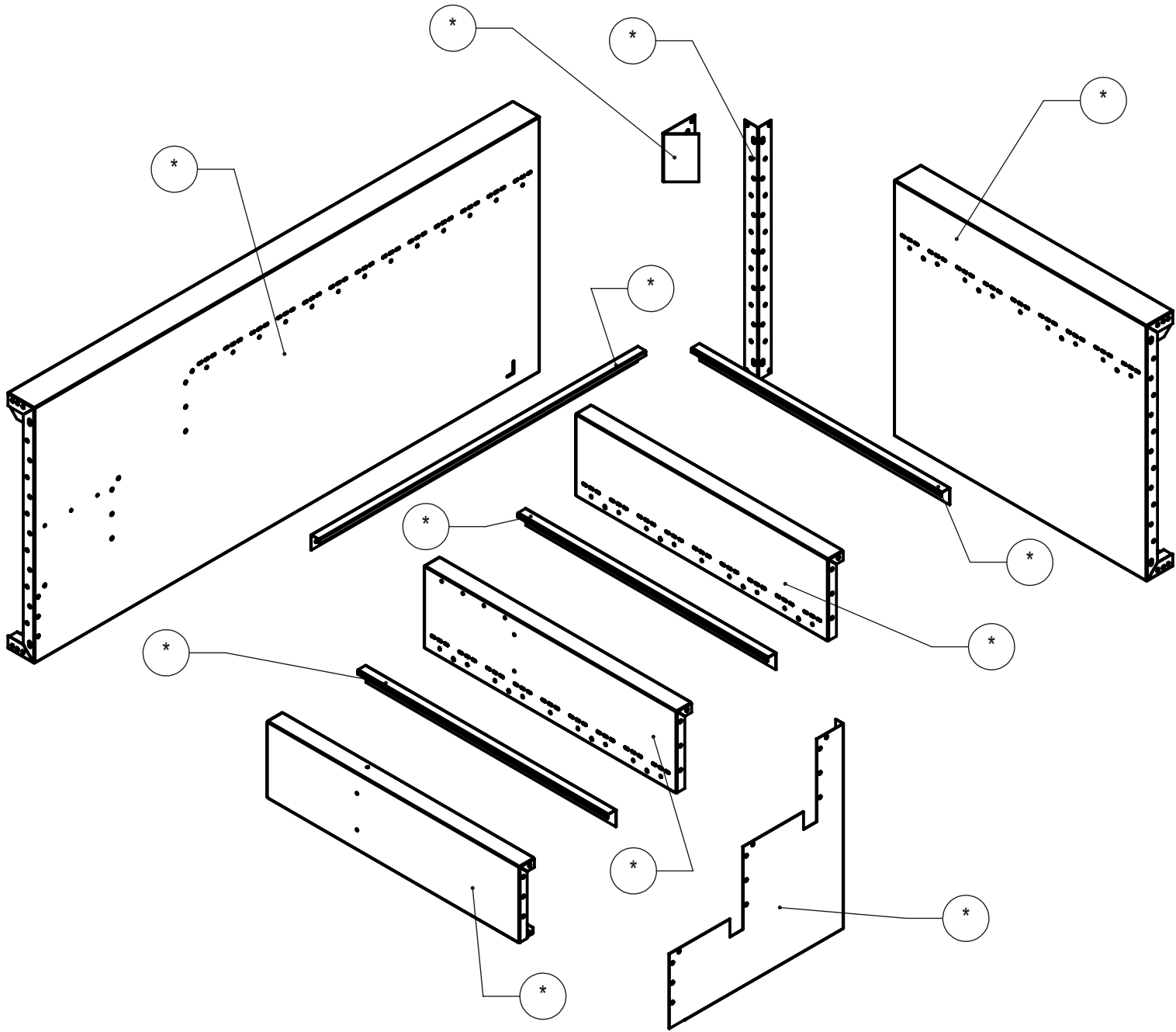
- ROUGH EXCAVATION SHOULD BE 2" DEEPER IN EACH INSTANCE.
- SOIL TO HAVE MINIMUM BEARING CAPACITY OF 1500 PSF.
- LOCATE TOP OF POOL AT LEAST 6" ABOVE THE SURROUNDING LAND ELEVATION.
- SEE "OVER DIG DETAIL" FOR EXCAVATION AROUND POOL.
- FILL VOIDS UNDER BASE OF PANELS AND TAMP WELL.
- BACK FILL WITH NON-EXPANSIVE MATERIAL.
- FOLLOW ALL CURRENT ANSI / APSP / ICC GUIDELINES FOR RESIDENTIAL POOLS

IMPORTANT NOTES:

THIS DOCUMENT IS FOR ILLUSTRATIVE PURPOSES ONLY. THE DEALER OR CONTRACTOR WHO SELLS OR INSTALLS YOUR POOL IS AN INDEPENDENT CONTRACTOR AND IS NOT AN AGENT OF THE MANUFACTURER. THE CONSTRUCTION METHODS ILLUSTRATED HERE ARE SUGGESTIONS AND APPLY ONLY TO NORMAL GROUND CONDITIONS. THERE MAY BE ADDITIONAL PRECAUTIONS AND/OR METHODS OF CONSTRUCTION. PROPER INSTALLATION IS THE RESPONSIBILITY OF THE DEALER/BUILDER/CONTRACTOR.

ITEM	FILE NAME	DESCRIPTION	CUSTOMER DRAWING #	VENDOR PART #	QTY.
1	BOLT, PACK	BOLT, FLANGE, 3/8-16 X 1", PACK (50)	HPS1916	HPS1916	4
2	00017128	STEP, 2' X 8", 3 TREAD, OPEN POUR, TANNING LEDGE, SUB ASSEMBLY	HSM17128	00017128	1
3	00017119	STEP, 4' X 8", 3 TREAD, OPEN POUR, TANNING LEDGE, SUB ASSEMBLY	HSM17119	00017119	2
4	00017156	STEP, 4' X 8", 6" RADIUS, 3 TREAD, LEFT, OPEN POUR, TANNING LEDGE, SUB ASSEMBLY	HSM17156	00017156	1
5	00017135	STEP, 4' X 8", 6" RADIUS, 3 TREAD, RIGHT, OPEN POUR, TANNING LEDGE, SUB ASSEMBLY	HSM17135	00017135	1

ENGINEERING DRAWING NUMBER 00017463	WEIGHT: lbs	UNLESS OTHERWISE SPECIFIED DIMENSIONS ARE IN INCHES TOLERANCES DECIMALS: X ± .1 XX ± .01 XXX ± .001 XXXX ± .0005  ANGULAR: X ± 0.5 THIRD ANGLE PROJECTION 	DESIGNED BY: MWILLIAMS	CREATION DATE: 01/30/18	SAMSON STEEL	
	VOLUME: Inch³		DETAILED BY: MWILLIAMS	DETAILED DATE: 01/31/18		
	COLOR: NA		LAST REVISED BY: mwiliams	LAST REVISED DATE: 01/31/18	TITLE: STEP, 8' X 18", 6" RADIUS, OPEN POUR, TANNING LEDGE, MODULAR	
	HEAT TREAT: NA		MATERIAL:			
	FINISH: NA				PART NUMBER:	HSSM17463
	TEXTURE: 2112				SCALE: 1:64	SIZE: B
					SHEET: 1 OF 5	



NOTES:

- THESE ARE FINISHED DIMENSIONS READY FOR THE LINER.
- DIMENSIONS ARE FROM INSIDE POOL PANELS.
- ROPE AND FLOAT ASSEMBLY SHOULD BE INSTALLED IN ACCORDANCE WITH CURRENT ANSI/ASPS/ICC REGULATIONS
- HYDRA LINER TRACK FOR STEPS IS INSTALLED WITH THE BARB FACING THE RISER WALL ON THE STEP.



EXCAVATION NOTES:

- ROUGH EXCAVATION SHOULD BE 2" DEEPER IN EACH INSTANCE.
- SOIL TO HAVE MINIMUM BEARING CAPACITY OF 1500 PSF.
- LOCATE TOP OF POOL AT LEAST 6" ABOVE THE SURROUNDING LAND ELEVATION.
- SEE "OVER DIG DETAIL" FOR EXCAVATION AROUND POOL.
- FILL VOIDS UNDER BASE OF PANELS AND TAMP WELL.
- BACK FILL WITH NON-EXPANSIVE MATERIAL.
- FOLLOW ALL CURRENT ANSI / APSP / ICC GUIDELINES FOR RESIDENTIAL POOLS

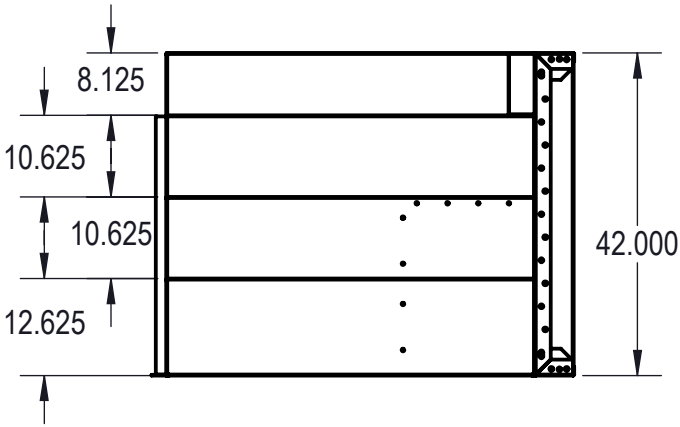
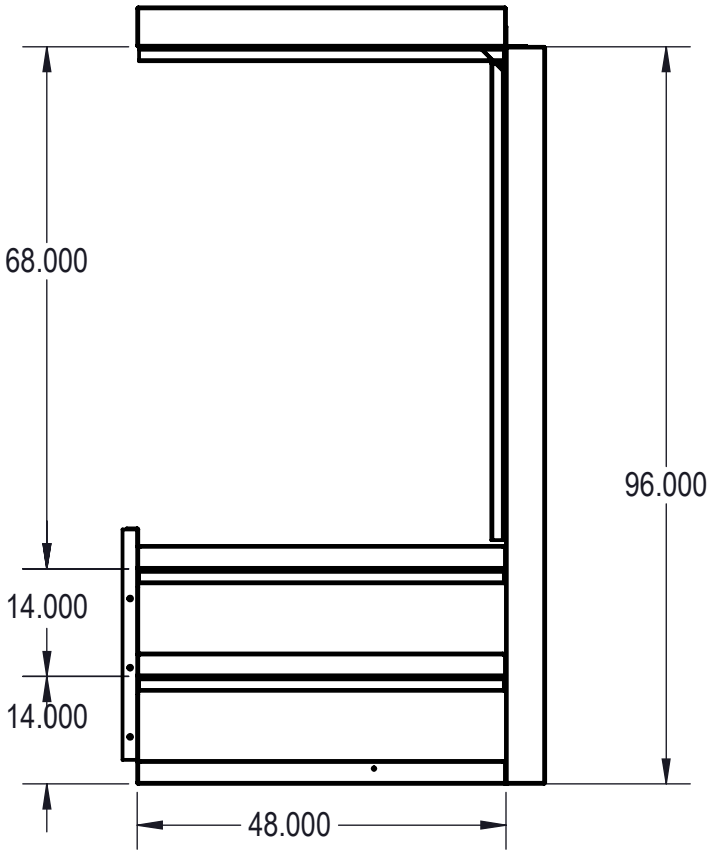
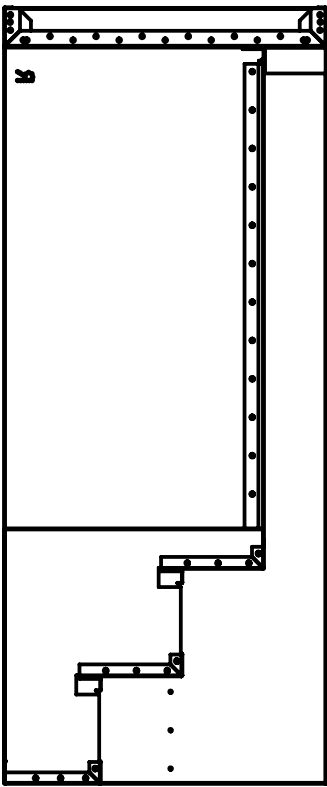
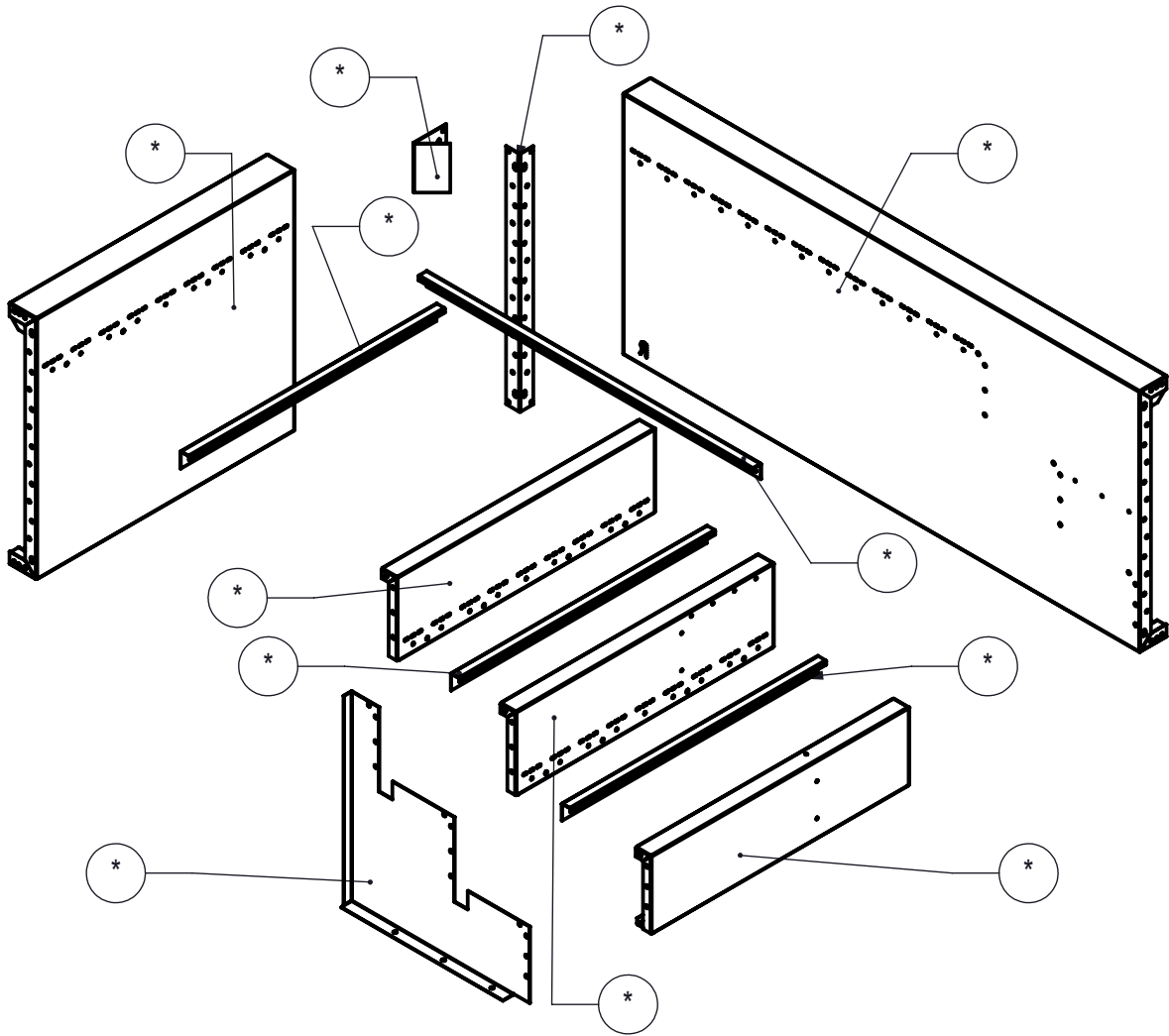
IMPORTANT NOTES:

THIS DOCUMENT IS FOR ILLUSTRATIVE PURPOSES ONLY. THE DEALER OR CONTRACTOR WHO SELLS OR INSTALLS YOUR POOL IS AN INDEPENDENT CONTRACTOR AND IS NOT AN AGENT OF THE MANUFACTURER. THE CONSTRUCTION METHODS ILLUSTRATED HERE ARE SUGGESTIONS AND APPLY ONLY TO NORMAL GROUND CONDITIONS. THERE MAY BE ADDITIONAL PRECAUTIONS AND/OR METHODS OF CONSTRUCTION. PROPER INSTALLATION IS THE RESPONSIBILITY OF THE DEALER/BUILDER/CONTRACTOR.

ITEM	FILE NAME	DESCRIPTION	CUSTOMER DRAWING #	VENDOR PART #	QTY.
1	BOLT, PACK	BOLT, FLANGE, 3/8-16 X 1", PACK (50)	HPS1916	HPS1916	2
2	00000051	CONNECTOR, CORNER, 2 1/2" X 1 1/2" X 90°	HPSD90C	HPSD90C	1
3	00017122	LINER TRACK, OPEN POUR	00017122	00017122	3
4	00017142	LINER TRACK, RIGHT OR LEFT	00017142	00017142	1
5	00017121	PANEL BACK, 4' LONG, 3 TREAD, OPEN POUR, TANNING LEDGE ASSEMBLY	00017121	00017121	1
6	00017157	PANEL, STEP, 3 TREAD, BENCH, LEFT SIDE, OPEN POUR, BENCH OPTION ASSEMBLY	00017157		1
7	00004159	STEP, 3 TREAD, 90 DEGREE, CORNER, 6" RADIUS FILLER			1
8	00017118	SUPPORT, CENTER, 3 TREAD, OPEN POUR	00017118	00017118	1
9	00017158	TREAD, STEP, 3 TREAD, "C", BENCH OPTION, 4' LONG, LEFT SIDE	00017158	00017158	1
10	00017123	TREAD, STEP, 3 TREAD, OPEN POUR, "B", 4'	00017123	00017123	1
11	00017160	TREAD, STEP, 3 TREAD, OPEN POUR, "D", 4' LONG, LEFT SIDE	00017160	00017160	1
12	SBRACE	BRACE, FOLD OVER WITH TURNBUCKLE, STEEL, HPSFOB	HPSFOB	HPSFOB	1

ENGINEERING DRAWING NUMBER: <b>00017156</b>	WEIGHT: lbs	UNLESS OTHERWISE SPECIFIED  DIMENSIONS ARE IN INCHES TOLERANCES DECIMALS: X ± .1 XX ± .01 XXX ± .001 XXXX ± .0005  ANGULAR: X ± 0.5 THIRD ANGLE PROJECTION   	DESIGNED BY: MWILLIAMS	CREATION DATE: 01/09/18	SAMSON STEEL		
	VOLUME: Inch³		DETAILED BY: MWILLIAMS	DETAILED DATE: 01/31/18			
	COLOR: NA		LAST REVISED BY: mwilliams	LAST REVISED DATE: 01/31/18	TITLE: STEP, 4' X 8', 6" RADIUS, 3 TREAD, LEFT, OPEN POUR, TANNING LEDGE, SUB ASSEMBLY		
	HEAT TREAT: NA		MATERIAL:				
	FINISH: NA		PART NUMBER:  <b>HSM17156</b>			SCALE: 1:32	SIZE: <b>B</b>
	TEXTURE: 576					SHEET: 2 OF 5	

REVISION HISTORY				
REV	DESCRIPTION	DATE	ECO	BY
A	RELEASED FOR PRODUCTION	01/18/18		MWILLIAMS



- NOTES:**
- THESE ARE FINISHED DIMENSIONS READY FOR THE LINER.
  - DIMENSIONS ARE FROM INSIDE POOL PANELS.
  - ROPE AND FLOAT ASSEMBLY SHOULD BE INSTALLED IN ACCORDANCE WITH CURRENT ANSI/ASPS/ICC REGULATIONS
  - HYDRA LINER TRACK FOR STEPS IS INSTALLED WITH THE BARB FACING THE RISER WALL ON THE STEP.
- EXCAVATION NOTES:**
- ROUGH EXCAVATION SHOULD BE 2" DEEPER IN EACH INSTANCE.
  - SOIL TO HAVE MINIMUM BEARING CAPACITY OF 1500 PSF.
  - LOCATE TOP OF POOL AT LEAST 6" ABOVE THE SURROUNDING LAND ELEVATION.
  - SEE "OVER DIG DETAIL" FOR EXCAVATION AROUND POOL.
  - FILL VOIDS UNDER BASE OF PANELS AND TAMP WELL.
  - BACK FILL WITH NON-EXPANSIVE MATERIAL.
  - FOLLOW ALL CURRENT ANSI / APSP / ICC GUIDELINES FOR RESIDENTIAL POOLS

**IMPORTANT NOTES:**

THIS DOCUMENT IS FOR ILLUSTRATIVE PURPOSES ONLY. THE DEALER OR CONTRACTOR WHO SELLS OR INSTALLS YOUR POOL IS AN INDEPENDENT CONTRACTOR AND IS NOT AN AGENT OF THE MANUFACTURER. THE CONSTRUCTION METHODS ILLUSTRATED HERE ARE SUGGESTIONS AND APPLY ONLY TO NORMAL GROUND CONDITIONS. THERE MAY BE ADDITIONAL PRECAUTIONS AND/OR METHODS OF CONSTRUCTION. PROPER INSTALLATION IS THE RESPONSIBILITY OF THE DEALER/BUILDER/CONTRACTOR.

ITEM	FILE NAME	DESCRIPTION	CUSTOMER DRAWING #	VENDOR PART #	QTY.
1	BOLT, PACK	BOLT, FLANGE, 3/8-16 X 1", PACK (50)	HPS1916	HPS1916	2
2	00000051	CONNECTOR, CORNER, 2 1/2" X 1 1/2" X 90°	HPSD90C	HPSD90C	1
3	00017122	LINER TRACK, OPEN POUR	00017122	00017122	3
4	00017142	LINER TRACK, RIGHT OR LEFT	00017142	00017142	1
5	00017121	PANEL BACK, 4' LONG, 3 TREAD, OPEN POUR, TANNING LEDGE ASSEMBLY	00017121	00017121	1
6	00017140	PANEL, STEP, 3 TREAD, BENCH, RIGHT SIDE, OPEN POUR, BENCH OPTION ASSEMBLY	00017140	00017140	1
7	00004159	STEP, 3 TREAD, 90 DEGREE, CORNER, 6" RADIUS FILLER			1
8	00017118	SUPPORT, CENTER, 3 TREAD, OPEN POUR	00017118	00017118	1
9	00017136	TREAD, STEP, 3 TREAD, "C", BENCH OPTION, 4' LONG, RIGHT SIDE	00017136	00017136	1
10	00017123	TREAD, STEP, 3 TREAD, OPEN POUR, "B", 4'	00017123	00017123	1
11	00017138	TREAD, STEP, 3 TREAD, OPEN POUR, "D", 4' LONG, RIGHT SIDE	00017138	00017138	1
12	SBRACE	BRACE, FOLD OVER WITH TURNBUCKLE, STEEL, HPSFOB	HPSFOB	HPSFOB	1

ENGINEERING DRAWING NUMBER  
00017135

WEIGHT:  
lbs  
VOLUME:  
Inch³  
COLOR:  
NA  
HEAT TREAT:  
NA  
FINISH:  
NA  
TEXTURE:  
576

UNLESS OTHERWISE SPECIFIED

DIMENSIONS ARE IN INCHES  
TOLERANCES  
DECIMALS: X ± .1  
              XX ± .01  
              XXX ± .001  
              XXXX ± .0005  
ANGULAR: X ± 0.5  
THIRD ANGLE PROJECTION

DESIGNED BY:  
MWILLIAMS  
DETAILED BY:  
MWILLIAMS  
LAST REVISED BY:  
mwilliams  
MATERIAL:

DESIGN DATE:  
01/08/18  
DETAILED DATE:  
01/31/18  
LAST REVISED DATE:  
01/31/18

SAMSON STEEL

TITLE: STEP, 4' X 8', 6" RADIUS, 3 TREAD, RIGHT, OPEN POUR, TANNING LEDGE, SUB ASSEMBLY

PART NUMBER:  
HSM17135

SCALE:  
1:32  
SHEET:  
3 OF 5

SIZE:  
B

REV. LEVEL: A-REV. DATE: JULY 29, 2015-DOCUMENT ID: CF7310, ANSI B

C:\PDM\Working\00017463

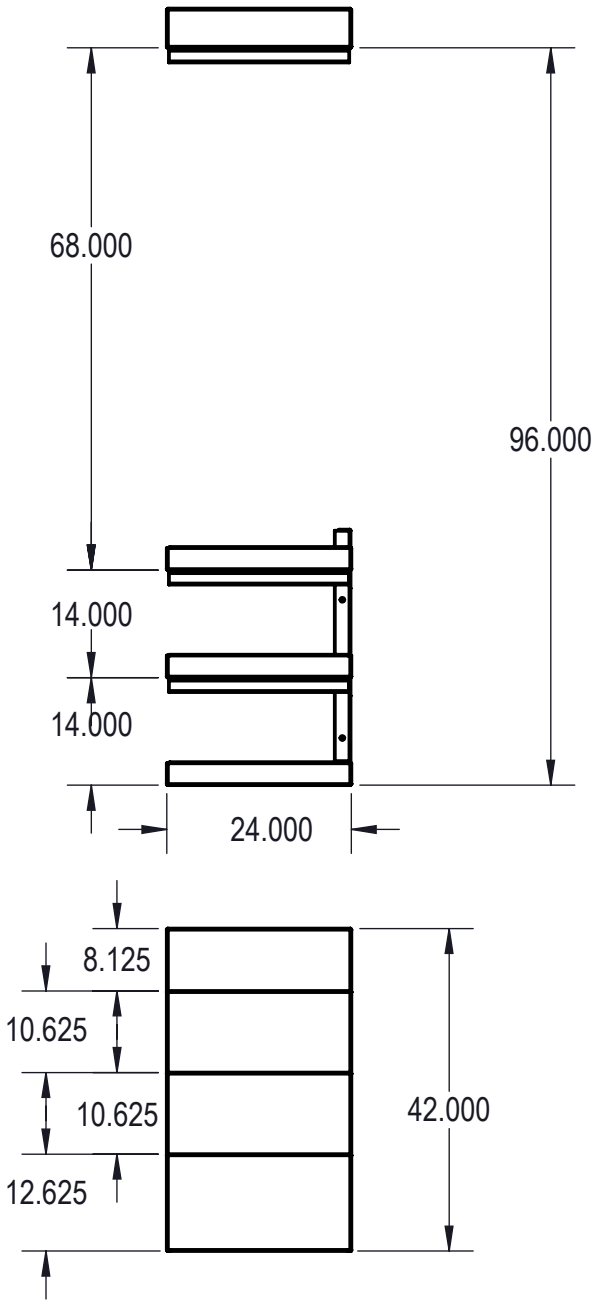
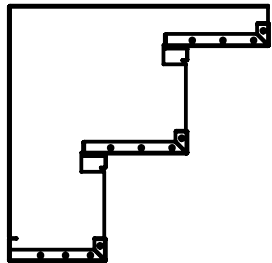
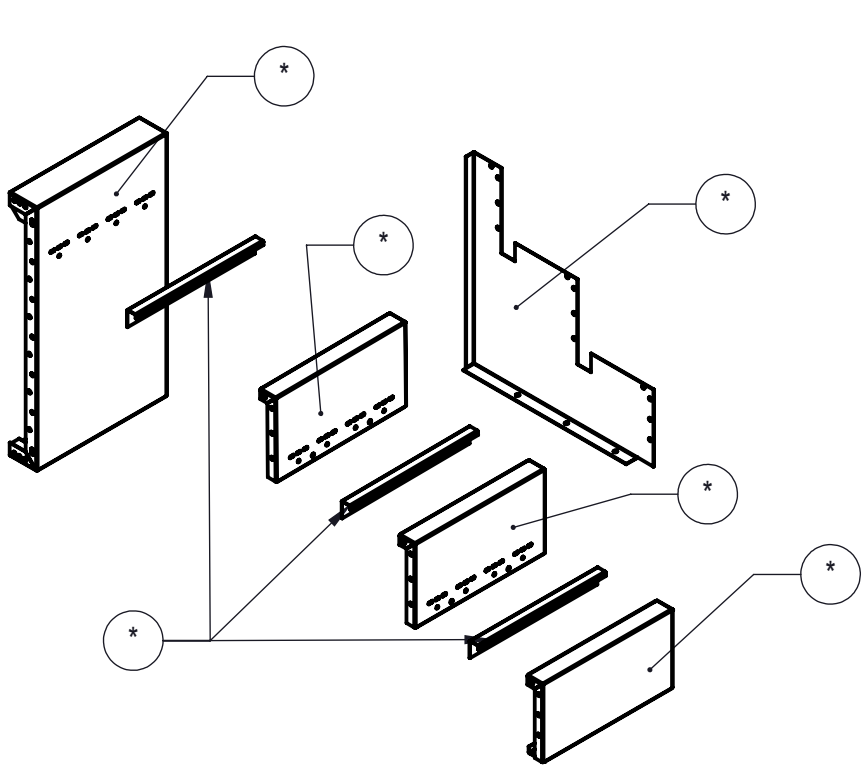
DRAWING NUMBER: 00017135  
MADE FROM: 00017135  
CHECK IN DATE/TIME: Wednesday, January 31, 2018 11:27:08 AM

REVISION HISTORY				
REV.	DESCRIPTION	DATE	ECO	BY
A	RELEASED FOR QUOTE	01/19/18		MWILLIAMS
B	ADDED TEXTURE	01/30/18		MWILLIAMS
C	UPDATED PART #	01/31/18		MWILLIAMS

DRAWING NUMBER:

MADE FROM:

CHECK IN DATE/TIME: Wednesday, January 31, 2018 11:27:08 AM



NOTES:

- THESE ARE FINISHED DIMENSIONS READY FOR THE LINER.
- DIMENSIONS ARE FROM INSIDE POOL PANELS.
- ROPE AND FLOAT ASSEMBLY SHOULD BE INSTALLED IN ACCORDANCE WITH CURRENT ANSI/ASPS/ICC REGULATIONS
- HYDRA LINER TRACK FOR STEPS IS INSTALLED WITH THE BARB FACING THE RISER WALL ON THE STEP.

EXCAVATION NOTES:

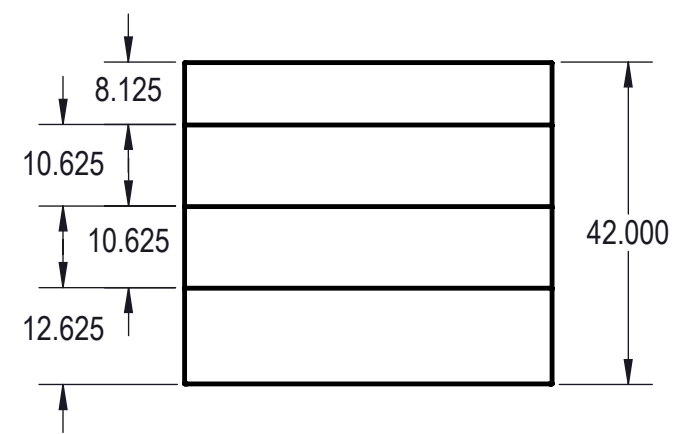
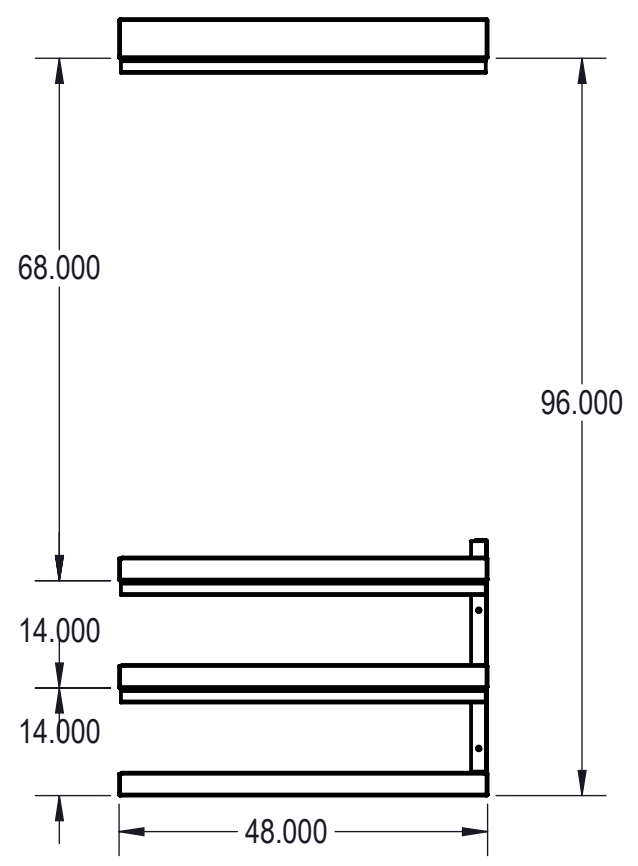
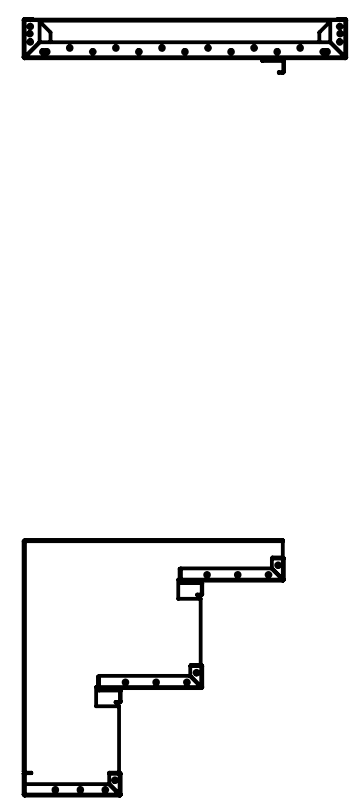
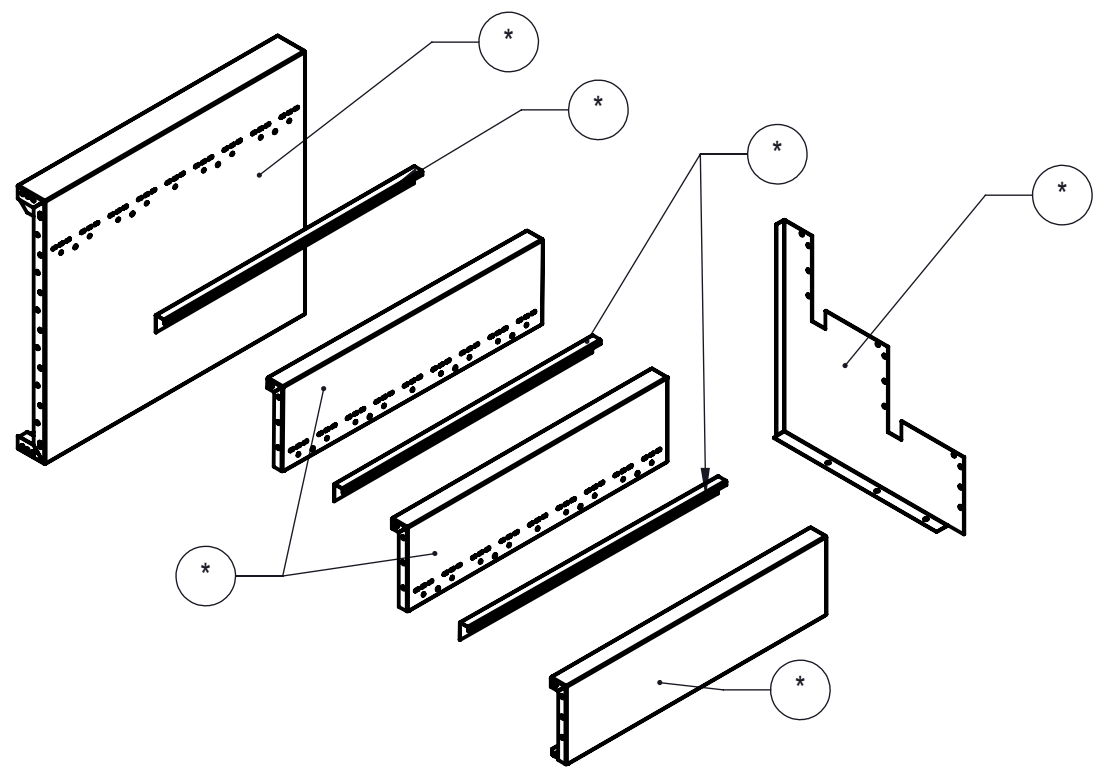
- ROUGH EXCAVATION SHOULD BE 2" DEEPER IN EACH INSTANCE.
- SOIL TO HAVE MINIMUM BEARING CAPACITY OF 1500 PSF.
- LOCATE TOP OF POOL AT LEAST 6" ABOVE THE SURROUNDING LAND ELEVATION.
- SEE "OVER DIG DETAIL" FOR EXCAVATION AROUND POOL.
- FILL VOIDS UNDER BASE OF PANELS AND TAMP WELL.
- BACK FILL WITH NON-EXPANSIVE MATERIAL.
- FOLLOW ALL CURRENT ANSI / APSP / ICC GUIDELINES FOR RESIDENTIAL POOLS

IMPORTANT NOTES:

THIS DOCUMENT IS FOR ILLUSTRATIVE PURPOSES ONLY. THE DEALER OR CONTRACTOR WHO SELLS OR INSTALLS YOUR POOL IS AN INDEPENDENT CONTRACTOR AND IS NOT AN AGENT OF THE MANUFACTURER. THE CONSTRUCTION METHODS ILLUSTRATED HERE ARE SUGGESTIONS AND APPLY ONLY TO NORMAL GROUND CONDITIONS. THERE MAY BE ADDITIONAL PRECAUTIONS AND/OR METHODS OF CONSTRUCTION. PROPER INSTALLATION IS THE RESPONSIBILITY OF THE DEALER/BUILDER/CONTRACTOR.

ITEM	FILE NAME	DESCRIPTION	CUSTOMER DRAWING #	VENDOR PART #	QTY.
1	BOLT, PACK	BOLT, FLANGE, 3/8-16 X 1", PACK (50)	HPS1916	HPS1916	1
2	00017133	LINER TRACK, BACK	00017133	00017133	3
3	00017129	PANEL, BACK, 2' LONG, 3 TREAD, OPEN POUR, TANNING LEDGE	00017129	00017129	1
4	00017118	SUPPORT, CENTER, 3 TREAD, OPEN POUR	00017118	00017118	1
5	00017131	TREAD, STEP, 3 TREAD, OPEN POUR, "B", 2' LONG	00017131	00017131	2
6	00017132	TREAD, STEP, 3 TREAD, OPEN POUR, "D", 2' LONG	00017132	00017132	1
7	SBRACE	BRACE, FOLD OVER WITH TURNBUCKLE, STEEL, HPSFOB	HPSFOB	HPSFOB	1

ENGINEERING DRAWING NUMBER 00017128	WEIGHT: lbs	UNLESS OTHERWISE SPECIFIED DIMENSIONS ARE IN INCHES TOLERANCES DECIMALS: X ± .1 XX ± .01 XXX ± .001 XXXX ± .0005  ANGULAR: X ± 0.5 THIRD ANGLE PROJECTION 	DESIGNED BY: MWILLIAMS	CREATION DATE: 01/08/18	SAMSON STEEL	
	VOLUME: Inch³		DETAILED BY: MWILLIAMS	DETAILED DATE: 01/31/18		
	COLOR: NA		LAST REVISED BY: mwilliams	LAST REVISED DATE: 01/31/18	TITLE: STEP, 2' X 8', 3 TREAD, OPEN POUR, TANNING LEDGE, SUB ASSEMBLY	
	HEAT TREAT: NA		MATERIAL:			
	FINISH: NA				PART NUMBER: HSM17128	SCALE: 1:32
	TEXTURE: 192					SHEET: 4 OF 5
						SIZE: B



NOTES:

- THESE ARE FINISHED DIMENSIONS READY FOR THE LINER.
- DIMENSIONS ARE FROM INSIDE POOL PANELS.
- ROPE AND FLOAT ASSEMBLY SHOULD BE INSTALLED IN ACCORDANCE WITH CURRENT ANSI/ASPS/ICC REGULATIONS
- HYDRA LINER TRACK FOR STEPS IS INSTALLED WITH THE BARB FACING THE RISER WALL ON THE STEP.

EXCAVATION NOTES:

- ROUGH EXCAVATION SHOULD BE 2" DEEPER IN EACH INSTANCE.
- SOIL TO HAVE MINIMUM BEARING CAPACITY OF 1500 PSF.
- LOCATE TOP OF POOL AT LEAST 6" ABOVE THE SURROUNDING LAND ELEVATION.
- SEE "OVER DIG DETAIL" FOR EXCAVATION AROUND POOL.
- FILL VOIDS UNDER BASE OF PANELS AND TAMP WELL.
- BACK FILL WITH NON-EXPANSIVE MATERIAL.
- FOLLOW ALL CURRENT ANSI / APSP / ICC GUIDELINES FOR RESIDENTIAL POOLS

IMPORTANT NOTES:

THIS DOCUMENT IS FOR ILLUSTRATIVE PURPOSES ONLY. THE DEALER OR CONTRACTOR WHO SELLS OR INSTALLS YOUR POOL IS AN INDEPENDENT CONTRACTOR AND IS NOT AN AGENT OF THE MANUFACTURER. THE CONSTRUCTION METHODS ILLUSTRATED HERE ARE SUGGESTIONS AND APPLY ONLY TO NORMAL GROUND CONDITIONS. THERE MAY BE ADDITIONAL PRECAUTIONS AND/OR METHODS OF CONSTRUCTION. PROPER INSTALLATION IS THE RESPONSIBILITY OF THE DEALER/BUILDER/CONTRACTOR.

ITEM	FILE NAME	DESCRIPTION	CUSTOMER DRAWING #	VENDOR PART #	QTY.
1	BOLT, PACK	BOLT, FLANGE, 3/8-16 X 1", PACK (50)	HPS1916	HPS1916	1
2	00017122	LINER TRACK, OPEN POUR	00017122	00017122	3
3	00017121	PANEL BACK, 4' LONG, 3 TREAD, OPEN POUR, TANNING LEDGE, ASSEMBLY	00017121	00017121	1
4	00017118	SUPPORT, CENTER, 3 TREAD, OPEN POUR	00017118	00017118	1
5	00017123	TREAD, STEP, 3 TREAD, OPEN POUR, "B", 4'	00017123	00017123	2
6	00017124	TREAD, STEP, 3 TREAD, OPEN POUR, "D", 4' LONG	00017124	00017124	1
7	SBRACE	BRACE, FOLD OVER WITH TURNBUCKLE, STEEL, HPSFOB	HPSFOB	HPSFOB	1

ENGINEERING DRAWING NUMBER  
00017119

WEIGHT:  
lbs

VOLUME:  
Inch<sup>3</sup>

COLOR:  
NA

HEAT TREAT:  
NA

FINISH:  
NA

TEXTURE:  
384

UNLESS OTHERWISE SPECIFIED

DIMENSIONS ARE IN INCHES  
TOLERANCES  
DECIMALS: X ± .1  
              XX ± .01  
             XXX ± .001  
             XXXX ± .0005

ANGULAR: X ± 0.5

THIRD ANGLE PROJECTION

DESIGNED BY:  
MWILLIAMS

DETAILED BY:  
MWILLIAMS

LAST REVISED BY:  
mwilliams

MATERIAL:

CREATION DATE:  
01/05/18

DETAILED DATE:  
01/31/18

LAST REVISED DATE:  
01/31/18

SAMSON STEEL

TITLE: STEP, 4' X 8', 3 TREAD, OPEN POUR, TANNING LEDGE, SUB ASSEMBLY

PART NUMBER:  
HSM17119

SCALE:  
1:32

SHEET:  
5 OF 5

SIZE:  
B