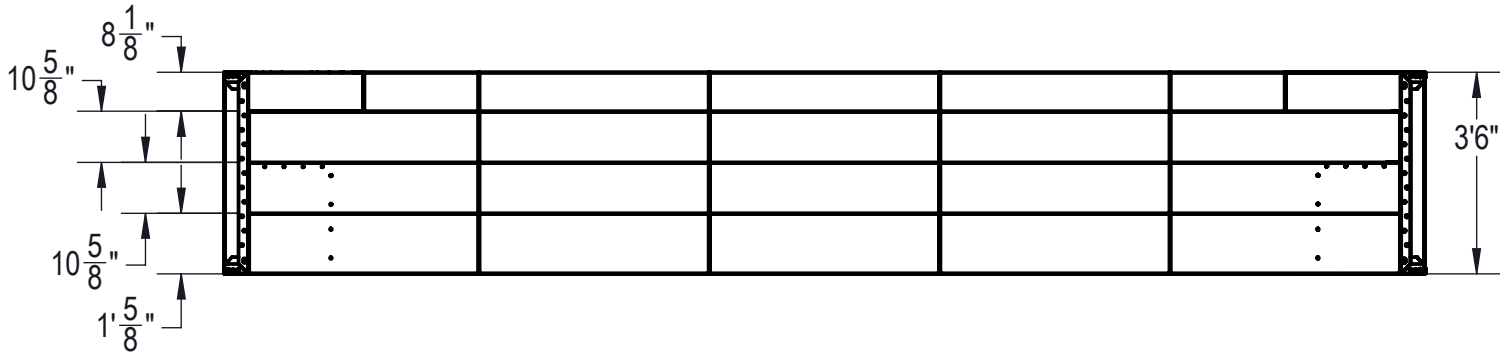
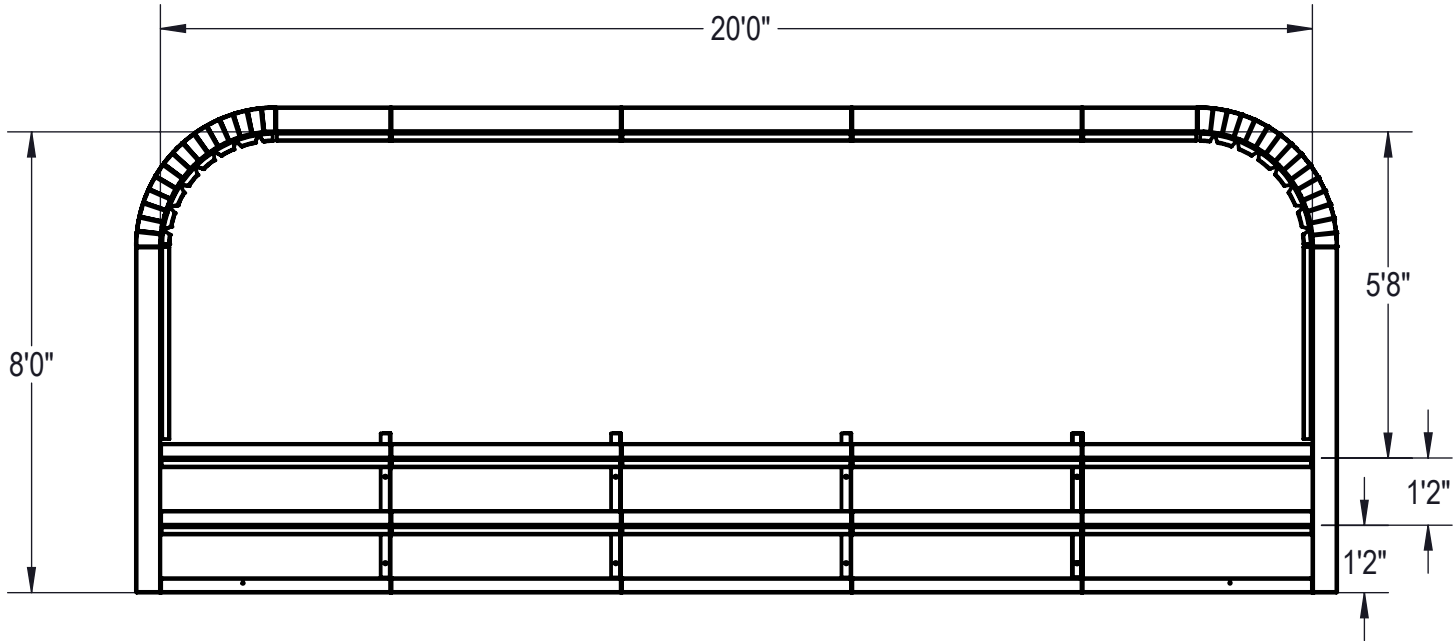
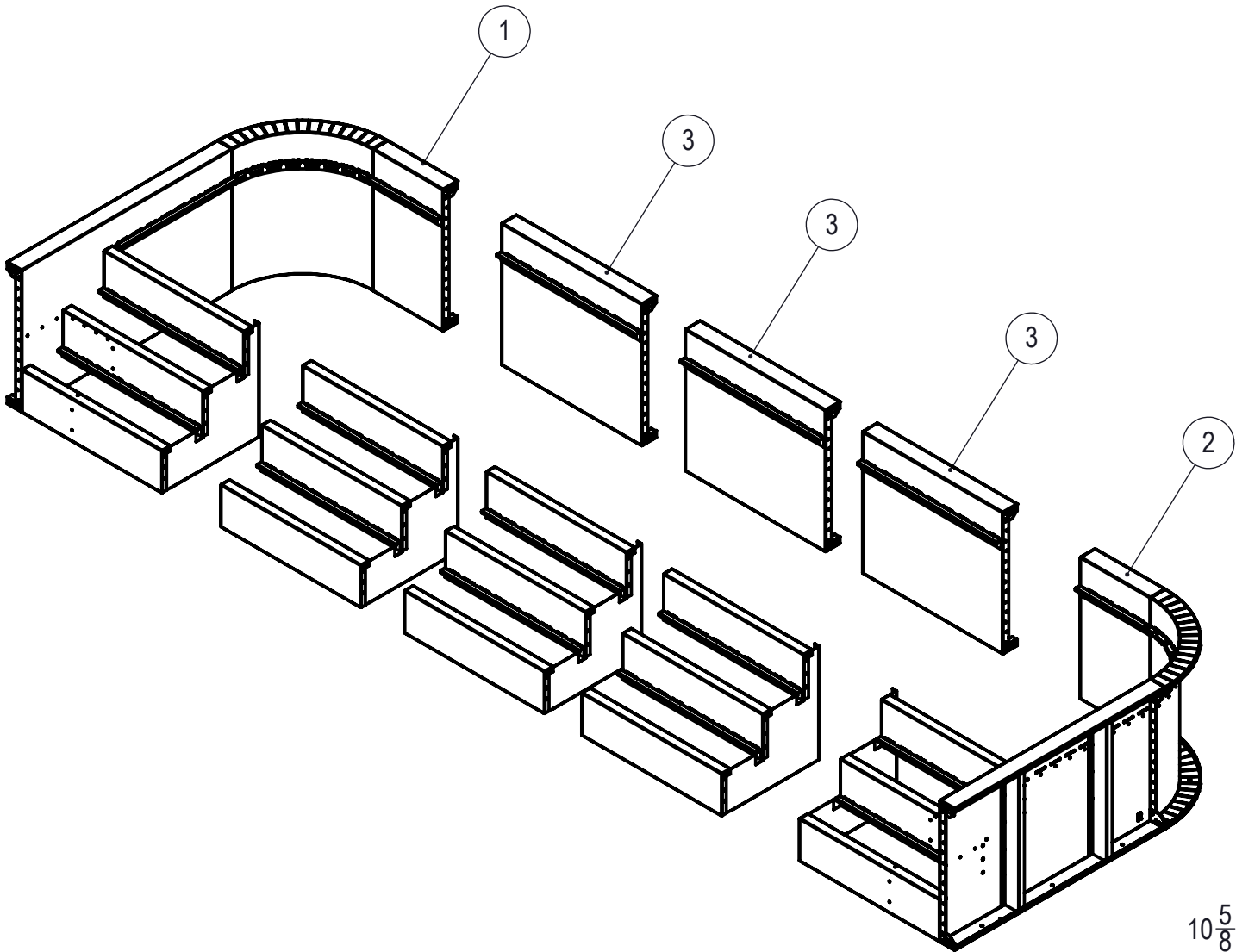


REVISION HISTORY				
REV	DESCRIPTION	DATE	ECO	BY
A	FIXED DRAWING	1/29/2018		BUMPHREY
B	RELEASED FOR PRODUCTION	01/31/18		MWILLIAMS



NOTES:

- THESE ARE FINISHED DIMENSIONS READY FOR THE LINER.
- DIMENSIONS ARE FROM INSIDE POOL PANELS.
- ROPE AND FLOAT ASSEMBLY SHOULD BE INSTALLED IN ACCORDANCE WITH CURRENT ANSI/ASPS/ICC REGULATIONS
- HYDRA LINER TRACK FOR STEPS IS INSTALLED WITH THE BARB FACING THE RISER WALL ON THE STEP.

EXCAVATION NOTES:

- ROUGH EXCAVATION SHOULD BE 2" DEEPER IN EACH INSTANCE.
- SOIL TO HAVE MINIMUM BEARING CAPACITY OF 1500 PSF.
- LOCATE TOP OF POOL AT LEAST 6" ABOVE THE SURROUNDING LAND ELEVATION.
- SEE "OVER DIG DETAIL" FOR EXCAVATION AROUND POOL.
- FILL VOIDS UNDER BASE OF PANELS AND TAMP WELL.
- BACK FILL WITH NON-EXPANSIVE MATERIAL.
- FOLLOW ALL CURRENT ANSI / APSP / ICC GUIDELINES FOR RESIDENTIAL POOLS

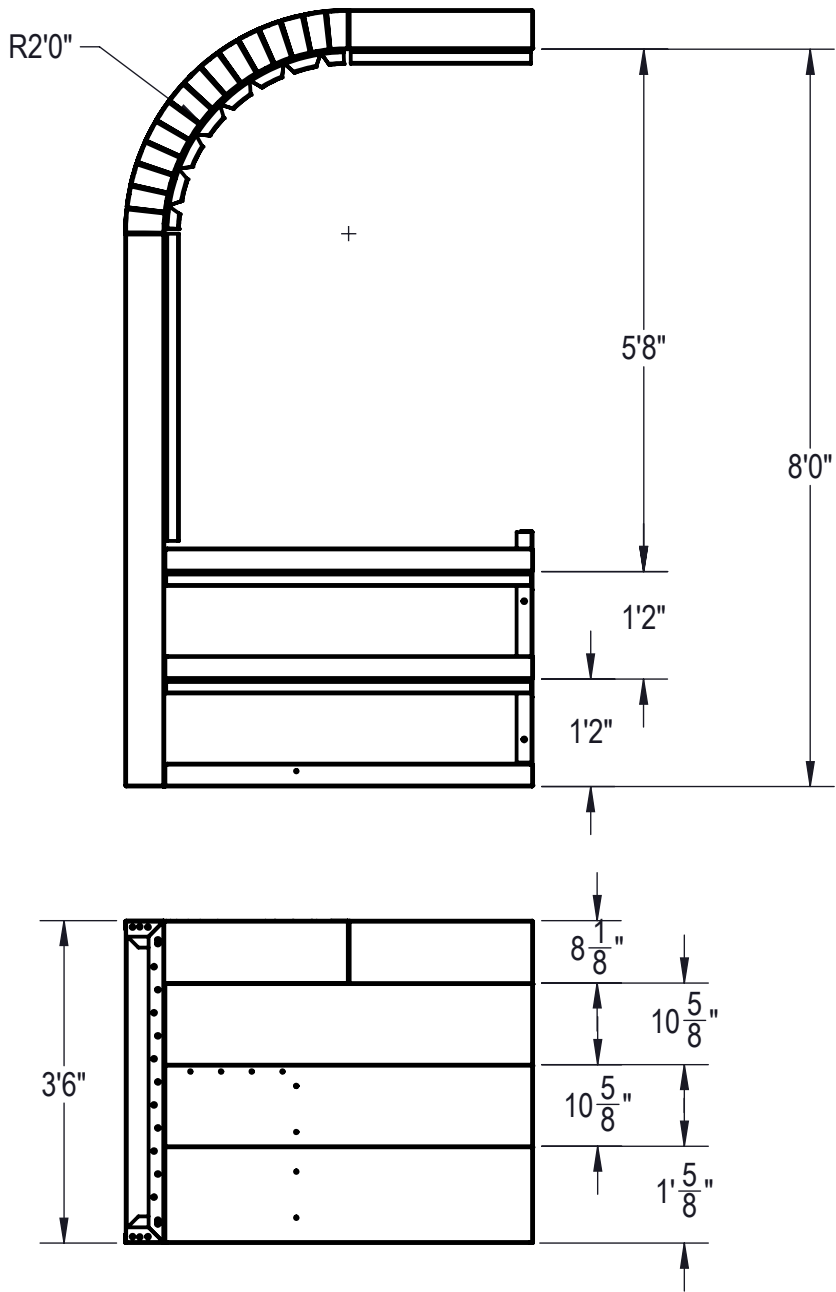
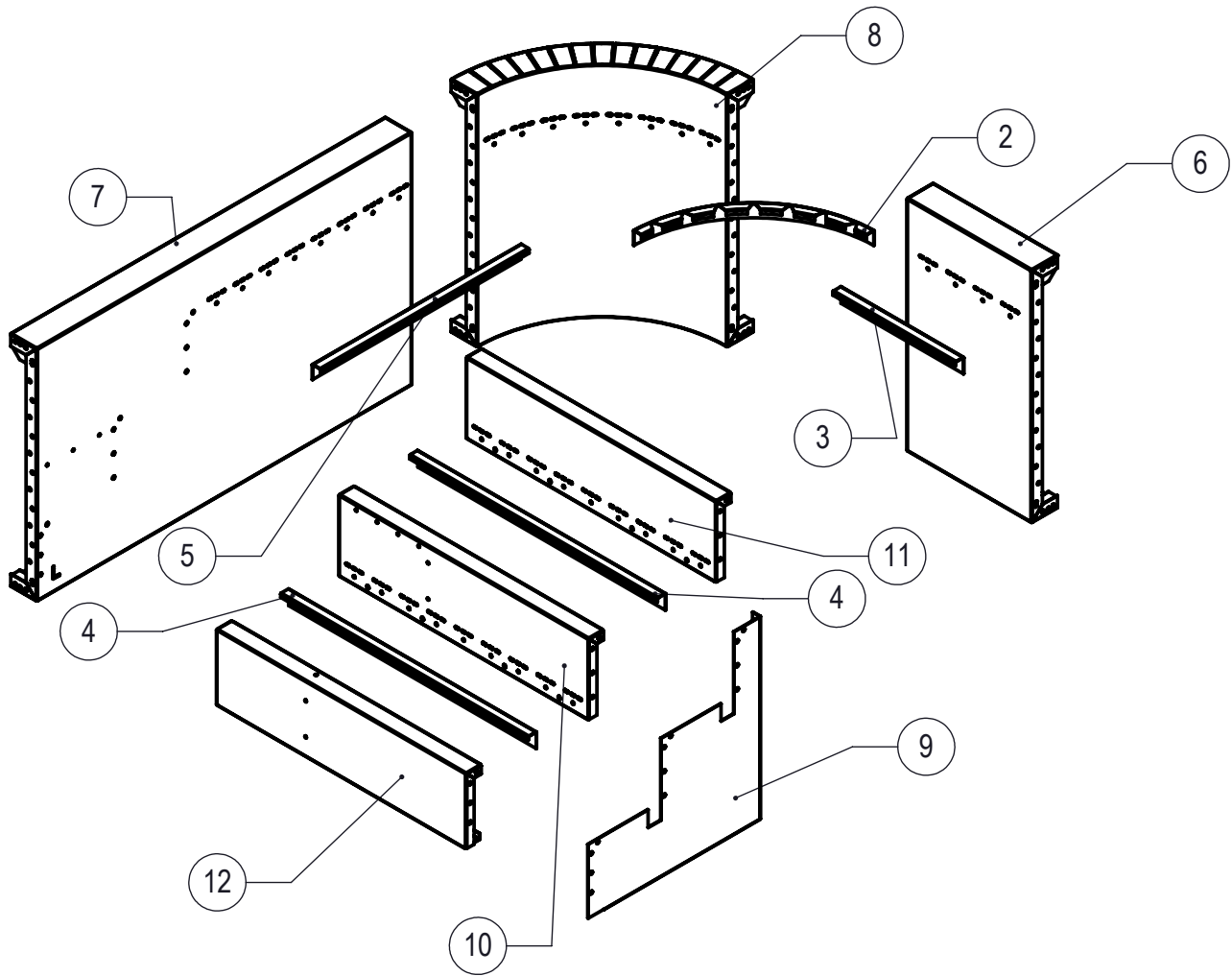
IMPORTANT NOTES:

THIS DOCUMENT IS FOR ILLUSTRATIVE PURPOSES ONLY. THE DEALER OR CONTRACTOR WHO SELLS OR INSTALLS YOUR POOL IS AN INDEPENDENT CONTRACTOR AND IS NOT AN AGENT OF THE MANUFACTURER. THE CONSTRUCTION METHODS ILLUSTRATED HERE ARE SUGGESTIONS AND APPLY ONLY TO NORMAL GROUND CONDITIONS. THERE MAY BE ADDITIONAL PRECAUTIONS AND/OR METHODS OF CONSTRUCTION. PROPER INSTALLATION IS THE RESPONSIBILITY OF THE DEALER/BUILDER/CONTRACTOR.

ITEM	FILE NAME	DESCRIPTION	CUSTOMER DRAWING #	VENDOR PART #	QTY.
1	00017223	STEP, 4' X 8', 2' RADIUS, 3 TREAD, LEFT, OPEN POUR, TANNING LEDGE, SUB ASSEMBLY	HSM17223	00017223	1
2	00017164	STEP, 4' X 8', 2' RADIUS, 3 TREAD, RIGHT, OPEN POUR, TANNING LEDGE, SUB ASSEMBLY	HSM17164	00017164	1
3	00017119	STEP, 4' X 8', 3 TREAD, OPEN POUR, TANNING LEDGE, SUB ASSEMBLY	HSM17119	00017119	3

ENGINEERING DRAWING NUMBER 00017428	WEIGHT: lbs	UNLESS OTHERWISE SPECIFIED DIMENSIONS ARE IN INCHES TOLERANCES DECIMALS: X ± .1 XX ± .01 XXX ± .001 XXXX ± .0005 ANGULAR: X ± 0.5 THIRD ANGLE PROJECTION ⊕ ◁	DESIGNED BY: BUMPHREY	CREATION DATE: 01/15/18	SAMSON STEEL	
	VOLUME: Inch <sup>3</sup>		DETAILED BY: MWILLIAMS	DETAILED DATE:		
	COLOR: NA		LAST REVISED BY: mwilliams	LAST REVISED DATE: 01/31/18	TITLE: STEP, 8' X 20', 2' RADIUS, 3 TREAD, OPEN POUR, TANNING LEDGE, ASSEMBLY	
	HEAT TREAT: NA		MATERIAL:			
	FINISH: NA				PART NUMBER: HSSM17428	
	TEXTURE: 2267					
					SCALE: 1:64	SIZE: B
					SHEET: 1 OF 4	

REVISION HISTORY				
REV.	DESCRIPTION	DATE	ECO	BY
A	RELEASED FOR PRODUCTION	01/29/18		MWILLIAMS



- NOTES:**
- THESE ARE FINISHED DIMENSIONS READY FOR THE LINER.
  - DIMENSIONS ARE FROM INSIDE POOL PANELS.
  - ROPE AND FLOAT ASSEMBLY SHOULD BE INSTALLED IN ACCORDANCE WITH CURRENT ANSI/ASPS/ICC REGULATIONS
  - HYDRA LINER TRACK FOR STEPS IS INSTALLED WITH THE BARB FACING THE RISER WALL ON THE STEP.

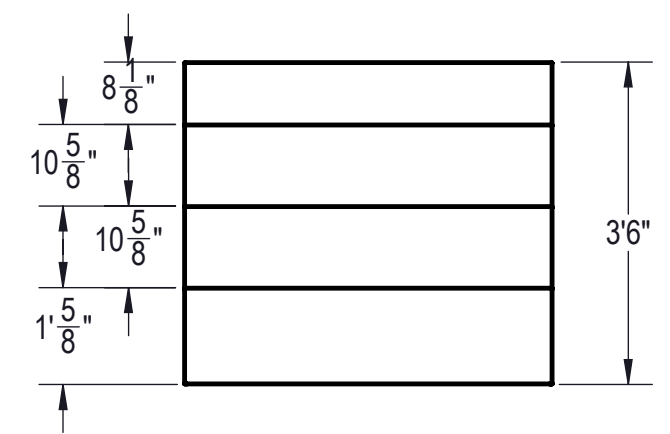
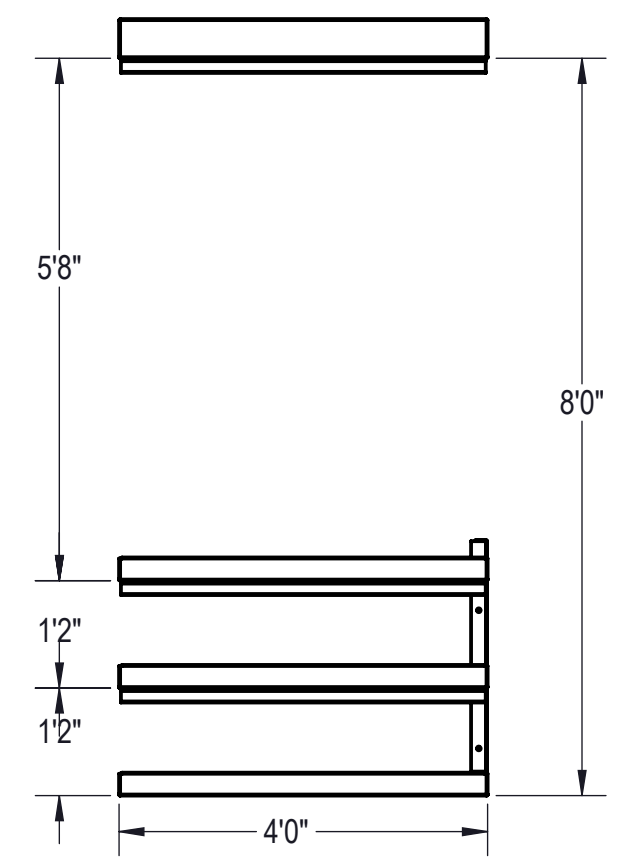
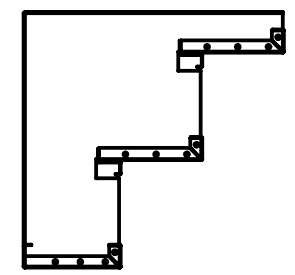
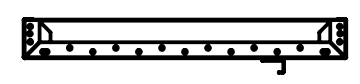
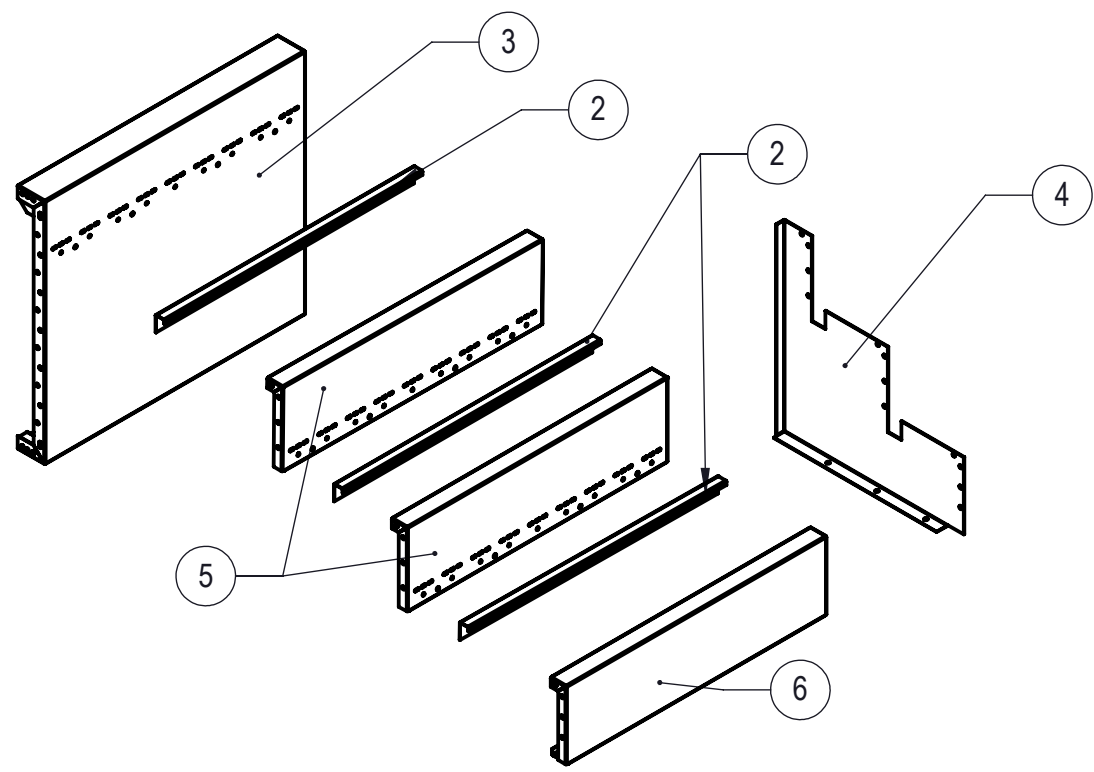
- EXCAVATION NOTES:**
- ROUGH EXCAVATION SHOULD BE 2" DEEPER IN EACH INSTANCE.
  - SOIL TO HAVE MINIMUM BEARING CAPACITY OF 1500 PSF.
  - LOCATE TOP OF POOL AT LEAST 6" ABOVE THE SURROUNDING LAND ELEVATION.
  - SEE "OVER DIG DETAIL" FOR EXCAVATION AROUND POOL.
  - FILL VOIDS UNDER BASE OF PANELS AND TAMP WELL.
  - BACK FILL WITH NON-EXPANSIVE MATERIAL.
  - FOLLOW ALL CURRENT ANSI / APSP / ICC GUIDELINES FOR RESIDENTIAL POOLS

**IMPORTANT NOTES:**

THIS DOCUMENT IS FOR ILLUSTRATIVE PURPOSES ONLY. THE DEALER OR CONTRACTOR WHO SELLS OR INSTALLS YOUR POOL IS AN INDEPENDENT CONTRACTOR AND IS NOT AN AGENT OF THE MANUFACTURER. THE CONSTRUCTION METHODS ILLUSTRATED HERE ARE SUGGESTIONS AND APPLY ONLY TO NORMAL GROUND CONDITIONS. THERE MAY BE ADDITIONAL PRECAUTIONS AND/OR METHODS OF CONSTRUCTION. PROPER INSTALLATION IS THE RESPONSIBILITY OF THE DEALER/BUILDER/CONTRACTOR.

ITEM	FILE NAME	DESCRIPTION	CUSTOMER DRAWING #	VENDOR PART #	QTY.
1	BOLT, PACK	BOLT, FLANGE, 3/8-16 X 1", PACK (50)	HPS1916	HPS1916	2
2	00017208	LINER TRACK, 2' RADIUS, RIGHT OR LEFT	00017208	00017208	1
3	00017133	LINER TRACK, BACK	00017133	00017133	1
4	00017122	LINER TRACK, OPEN POUR	00017122	00017122	2
5	00017209	LINER TRACK, RIGHT OR LEFT	00017209	00017209	1
6	00017129	PANEL, BACK, 2' LONG, 3' TREAD, OPEN POUR, TANNING LEDGE	00017129	00017129	1
7	00017225	PANEL, STEP, 3' TREAD, BENCH, OPEN POUR, LEFT SIDE, BENCH OPTION, ASSEMBLY	00017225	00017225	1
8	00017166	PANEL, 2' RADIUS, 3' TREAD, OPEN POUR, TANNING LEDGE, ASSEMBLY	00017166	00017166	1
9	00017118	SUPPORT, CENTER, 3' TREAD, OPEN POUR	00017118	00017118	1
10	00017158	TREAD, STEP, 3' TREAD, "C", BENCH OPTION, 4' LONG, LEFT SIDE	00017158	00017158	1
11	00017123	TREAD, STEP, 3' TREAD, OPEN POUR, "B", 4'	00017123	00017123	1
12	00017160	TREAD, STEP, 3' TREAD, OPEN POUR, "D", 4' LONG, LEFT SIDE	00017160	00017160	1
13	SBRACE	BRACE, FOLD OVER WITH TURNBUCKLE, STEEL, HPSFOB	HPSFOB	HPSFOB	1

ENGINEERING DRAWING NUMBER 00017223	WEIGHT: lbs	UNLESS OTHERWISE SPECIFIED DIMENSIONS ARE IN INCHES TOLERANCES DECIMALS: X ± .1 XX ± .01 XXX ± .001 XXXX ± .0005  ANGULAR: X ± 0.5 THIRD ANGLE PROJECTION 	DESIGNED BY: MWILLIAMS	CREATION DATE: 01/15/18	SAMSON STEEL	
	VOLUME: Inch³		DETAILED BY: MWILLIAMS	DETAILED DATE:		
	COLOR: NA		LAST REVISED BY: mwiliams	LAST REVISED DATE: 01/31/18	TITLE: STEP, 4' X 8', 2' RADIUS, 3 TREAD, LEFT, OPEN POUR, TANNING LEDGE, SUB ASSEMBLY	
	HEAT TREAT: NA		MATERIAL:			
	FINISH: NA				PART NUMBER:	
	TEXTURE: 556					
					SCALE: 1:32	SIZE: B
					SHEET: 2 OF 4	



NOTES:

- THESE ARE FINISHED DIMENSIONS READY FOR THE LINER.
- DIMENSIONS ARE FROM INSIDE POOL PANELS.
- ROPE AND FLOAT ASSEMBLY SHOULD BE INSTALLED IN ACCORDANCE WITH CURRENT ANSI/ASPS/ICC REGULATIONS
- HYDRA LINER TRACK FOR STEPS IS INSTALLED WITH THE BARB FACING THE RISER WALL ON THE STEP.

EXCAVATION NOTES:

- ROUGH EXCAVATION SHOULD BE 2" DEEPER IN EACH INSTANCE.
- SOIL TO HAVE MINIMUM BEARING CAPACITY OF 1500 PSF.
- LOCATE TOP OF POOL AT LEAST 6" ABOVE THE SURROUNDING LAND ELEVATION.
- SEE "OVER DIG DETAIL" FOR EXCAVATION AROUND POOL.
- FILL VOIDS UNDER BASE OF PANELS AND TAMP WELL.
- BACK FILL WITH NON-EXPANSIVE MATERIAL.
- FOLLOW ALL CURRENT ANSI / APSP / ICC GUIDELINES FOR RESIDENTIAL POOLS

IMPORTANT NOTES:

THIS DOCUMENT IS FOR ILLUSTRATIVE PURPOSES ONLY. THE DEALER OR CONTRACTOR WHO SELLS OR INSTALLS YOUR POOL IS AN INDEPENDENT CONTRACTOR AND IS NOT AN AGENT OF THE MANUFACTURER. THE CONSTRUCTION METHODS ILLUSTRATED HERE ARE SUGGESTIONS AND APPLY ONLY TO NORMAL GROUND CONDITIONS. THERE MAY BE ADDITIONAL PRECAUTIONS AND/OR METHODS OF CONSTRUCTION. PROPER INSTALLATION IS THE RESPONSIBILITY OF THE DEALER/BUILDER/CONTRACTOR.

ITEM	FILE NAME	DESCRIPTION	CUSTOMER DRAWING #	VENDOR PART #	QTY.
1	BOLT, PACK	BOLT, FLANGE, 3/8-16 X 1", PACK (50)	HPS1916	HPS1916	1
2	00017122	LINER TRACK, OPEN POUR	00017122	00017122	3
3	00017121	PANEL BACK, 4' LONG, 3 TREAD, OPEN POUR, TANNING LEDGE ASSEMBLY	00017121	00017121	1
4	00017118	SUPPORT, CENTER, 3 TREAD, OPEN POUR	00017118	00017118	1
5	00017123	TREAD, STEP, 3 TREAD, OPEN POUR, "B", 4'	00017123	00017123	2
6	00017124	TREAD, STEP, 3 TREAD, OPEN POUR, "D", 4' LONG	00017124	00017124	1
7	SBRACE	BRACE, FOLD OVER WITH TURNBUCKLE, STEEL, HPSFOB	HPSFOB	HPSFOB	1

ENGINEERING DRAWING NUMBER  
00017119

WEIGHT:  
lbs  
VOLUME:  
Inch<sup>3</sup>  
COLOR:  
NA  
HEAT TREAT:  
NA  
FINISH:  
NA  
TEXTURE:  
384

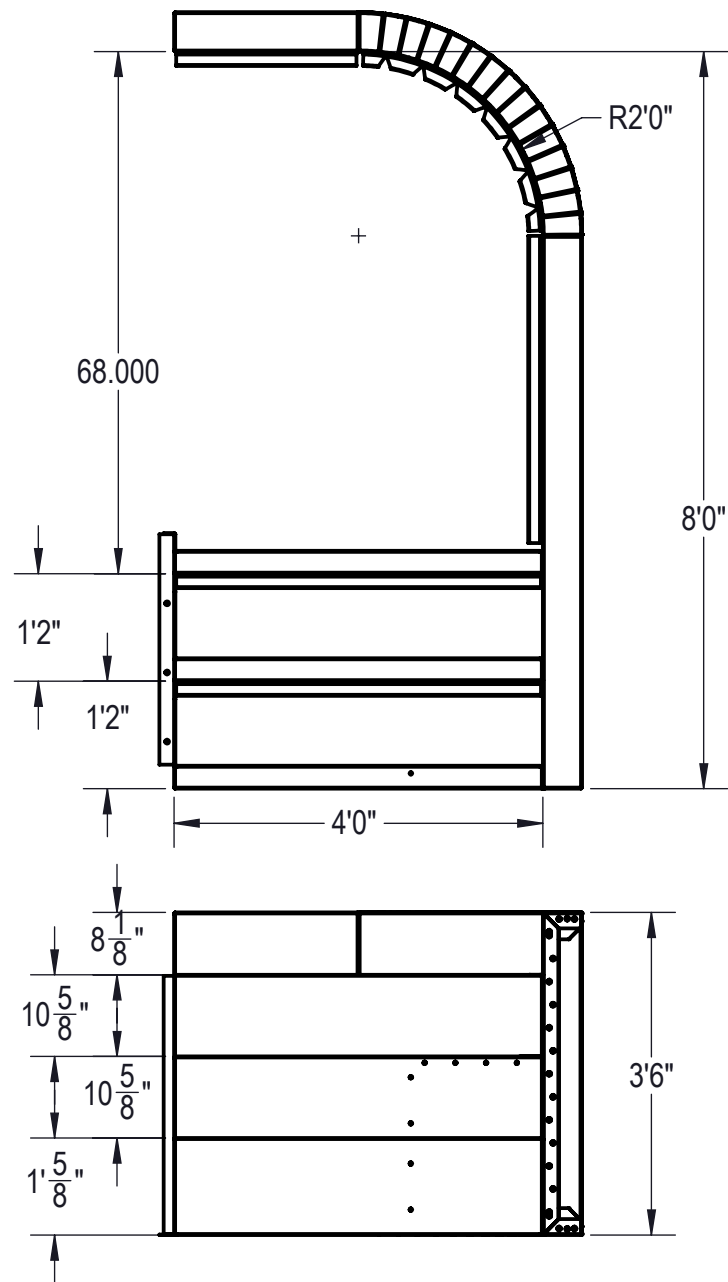
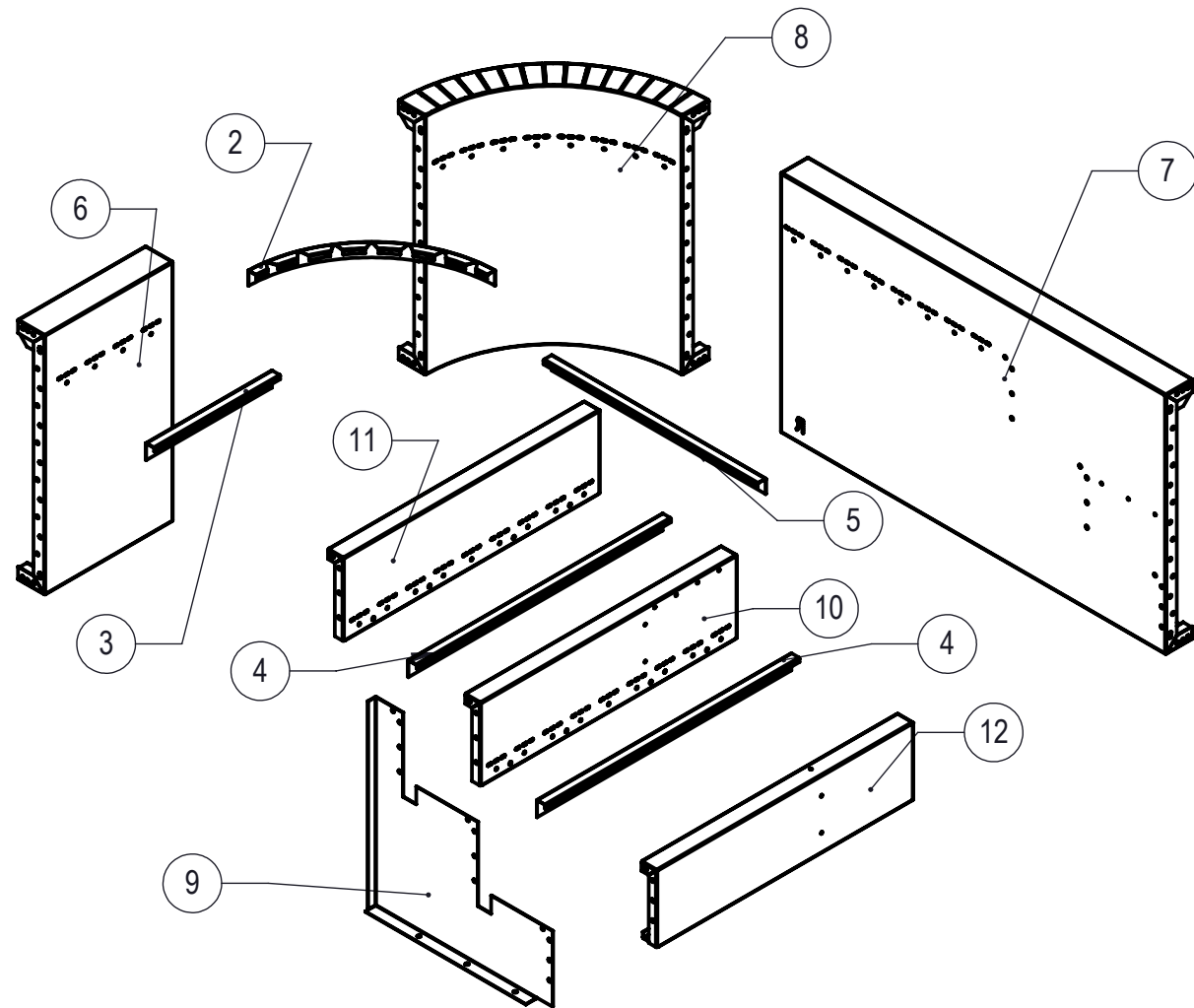
UNLESS OTHERWISE SPECIFIED  
DIMENSIONS ARE IN INCHES  
TOLERANCES  
DECIMALS: X ± .1  
              XX ± .01  
              XXX ± .001  
              XXXX ± .0005  
ANGULAR: X ± 0.5  
THIRD ANGLE PROJECTION  
⊕

DESIGNED BY:  
MWILLIAMS  
DETAILED BY:  
MWILLIAMS  
LAST REVISED BY:  
mwilliams  
MATERIAL:

CREATION DATE:  
01/05/18  
DETAILED DATE:  
DATE  
LAST REVISED DATE:  
01/31/18

SAMSON STEEL  
TITLE: STEP, 4' X 8', 3 TREAD, OPEN POUR, TANNING LEDGE, SUB ASSEMBLY  
PART NUMBER:  
HSM17119  
SCALE: 1:32  
SHEET: 3 OF 4  
SIZE: B

REVISION HISTORY				
REV.	DESCRIPTION	DATE	ECO	BY
A	RELEASED FOR PRODUCTION	01/22/18		MWILLIAMS



NOTES:

1. THESE ARE FINISHED DIMENSIONS READY FOR THE LINER.
2. DIMENSIONS ARE FROM INSIDE POOL PANELS.
3. ROPE AND FLOAT ASSEMBLY SHOULD BE INSTALLED IN ACCORDANCE WITH CURRENT ANSI/ASPS/ICC REGULATIONS
4. HYDRA LINER TRACK FOR STEPS IS INSTALLED WITH THE BARB FACING THE RISER WALL ON THE STEP.


EXCAVATION NOTES:

5. ROUGH EXCAVATION SHOULD BE 2" DEEPER IN EACH INSTANCE.
6. SOIL TO HAVE MINIMUM BEARING CAPACITY OF 1500 PSF.
7. LOCATE TOP OF POOL AT LEAST 6" ABOVE THE SURROUNDING LAND ELEVATION.
8. SEE "OVER DIG DETAIL" FOR EXCAVATION AROUND POOL.
9. FILL VOIDS UNDER BASE OF PANELS AND TAMP WELL.
10. BACK FILL WITH NON-EXPANSIVE MATERIAL.
11. FOLLOW ALL CURRENT ANSI / APSP / ICC GUIDELINES FOR RESIDENTIAL POOLS

IMPORTANT NOTES:

THIS DOCUMENT IS FOR ILLUSTRATIVE PURPOSES ONLY. THE DEALER OR CONTRACTOR WHO SELLS OR INSTALLS YOUR POOL IS AN INDEPENDENT CONTRACTOR AND IS NOT AN AGENT OF THE MANUFACTURER. THE CONSTRUCTION METHODS ILLUSTRATED HERE ARE SUGGESTIONS AND APPLY ONLY TO NORMAL GROUND CONDITIONS. THERE MAY BE ADDITIONAL PRECAUTIONS AND/OR METHODS OF CONSTRUCTION. PROPER INSTALLATION IS THE RESPONSIBILITY OF THE DEALER/BUILDER/CONTRACTOR.

ITEM	FILE NAME	DESCRIPTION	CUSTOMER DRAWING #	VENDOR PART #	QTY.
1	BOLT, PACK	BOLT, FLANGE, 3/8-16 X 1", PACK (50)	HPS1916	HPS1916	2
2	00017208	LINER TRACK, 2" RADIUS, RIGHT OR LEFT	00017208	00017208	1
3	00017133	LINER TRACK, BACK	00017133	00017133	1
4	00017122	LINER TRACK, OPEN POUR	00017122	00017122	2
5	00017209	LINER TRACK, RIGHT OR LEFT	00017209	00017209	1
6	00017129	PANEL BACK, 2" LONG, 3 TREAD, OPEN POUR, TANNING LEDGE	00017129	00017129	1
7	00017207	PANEL, STEP, 3 TREAD, BENCH, RIGHT SIDE, BENCH OPTION, ASSEMBLY	00017207	00017207	1
8	00017166	PANEL, 2" RADIUS, 3 TREAD, OPEN POUR, TANNING LEDGE, ASSEMBLY	00017166	00017166	1
9	00017118	SUPPORT, CENTER, 3 TREAD, OPEN POUR	00017118	00017118	1
10	00017136	TREAD, STEP, 3 TREAD, "C", BENCH OPTION, 4" LONG, RIGHT SIDE	00017136	00017136	1
11	00017123	TREAD, STEP, 3 TREAD, OPEN POUR, "B", 4"	00017123	00017123	1
12	00017138	TREAD, STEP, 3 TREAD, OPEN POUR, "D", 4" LONG, RIGHT SIDE	00017138	00017138	1
13	SBRACE	BRACE, FOLD OVER WITH TURNBUCKLE, STEEL, HPSFOB	HPSFOB	HPSFOB	1

ENGINEERING DRAWING NUMBER <b>000017164</b>	WEIGHT:		UNLESS OTHERWISE SPECIFIED  DIMENSIONS ARE IN INCHES TOLERANCES DECIMALS: X ± .1 XX ± .01 XXX ± .001 XXXX ± .0005  ANGULAR: X ± 0.5 THIRD ANGLE PROJECTION  	DESIGNED BY:	CREATION DATE:	SAMSON STEEL								
	lbs			MWILLIAMS	01/12/18									
	VOLUME:				DETAILED BY:		TITLE: STEP, 4' X 8', 2' RADIUS, 3 TREAD, RIGHT, OPEN POUR, TANNING LEDGE, SUB ASSEMBLY							
	Inch³				MWILLIAMS									
	COLOR:				LAST REVISED BY:	LAST REVISED DATE:					PART NUMBER:  <b>HSM17164</b>			
	NA				mwiliams	01/31/18								
	HEAT TREAT:				MATERIAL:									
	NA						SCALE: 1:32 SHEET: 4 OF 4							
	FINISH:					SIZE: B								
	TEXTURE:													
556														