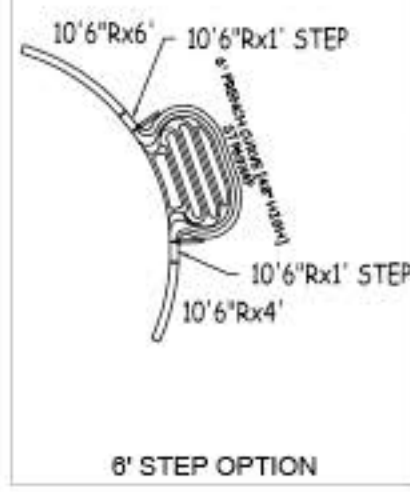
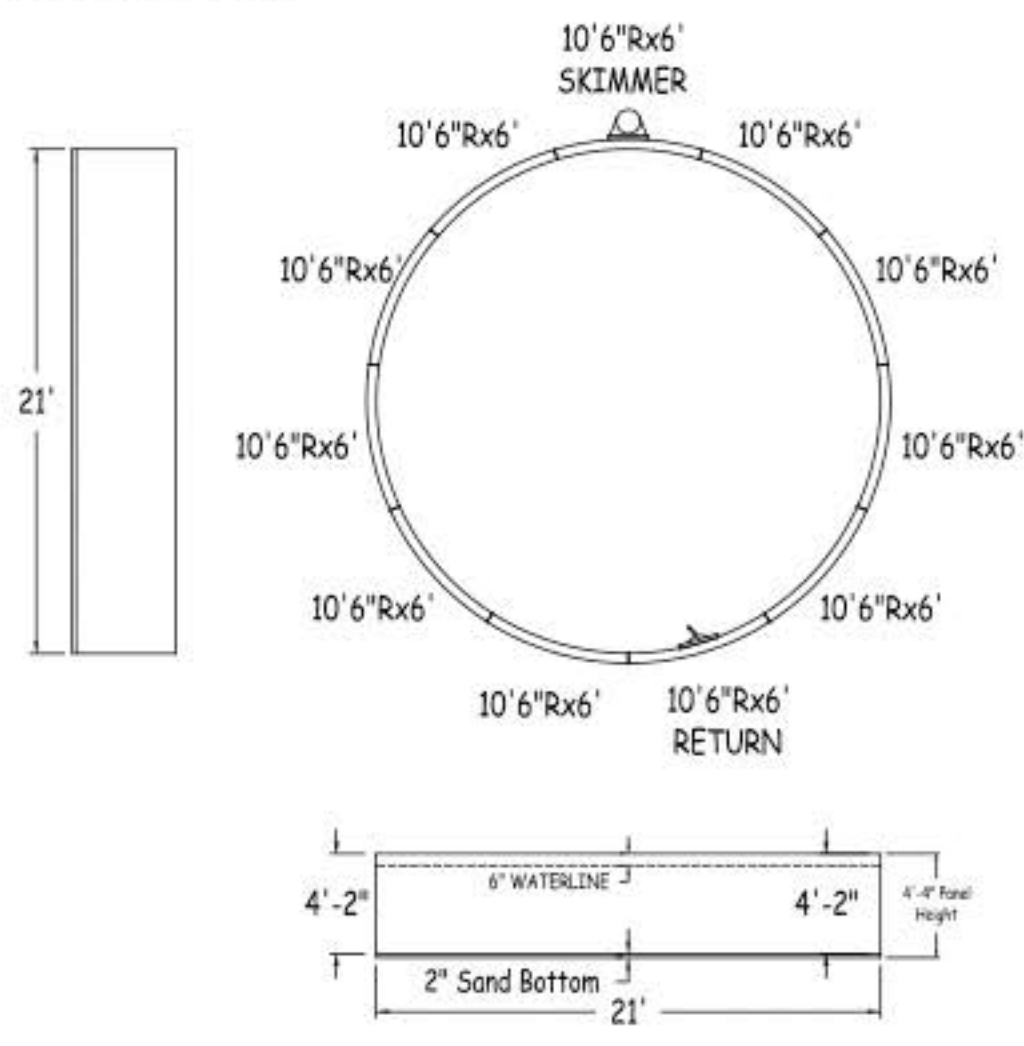


IN ACCORDANCE WITH ANSI/APSP/ICC-5 2011, THE INSTALLER IS RESPONSIBLE FOR PLACING ONE SKIMMER FOR EVERY 800 SQUARE FEET OF SURFACE AREA AND ONE RETURN FOR EVERY 300 SQUARE FEET OF SURFACE AREA.



Bartop OG Pool System		ROUND 21-0 X 21-0	
52" STEEL PANELS	PERIMETER:	66'0"	VOLUME (US Gal): 9500
DWG#: B5ROFBS2121-14	SURFACE (sq ft):	346	VOLUME (Liters): 36000
KIT#: ROFBS2121	LINER (ft ²):	346	DATE: 1/1/2014 DSR: N/A
	COVER (ft ²):	529	SCALE: 1/8" = 1'-0"

ALWAYS ENTER POOL

NON-DIVING POOL

USE OF DIVING EQUIPMENT IS PROHIBITED

Feet First

MEETS DEPTH AND SHAPE MINIMUM STANDARD ANSI/APSP/ICC-5 2011

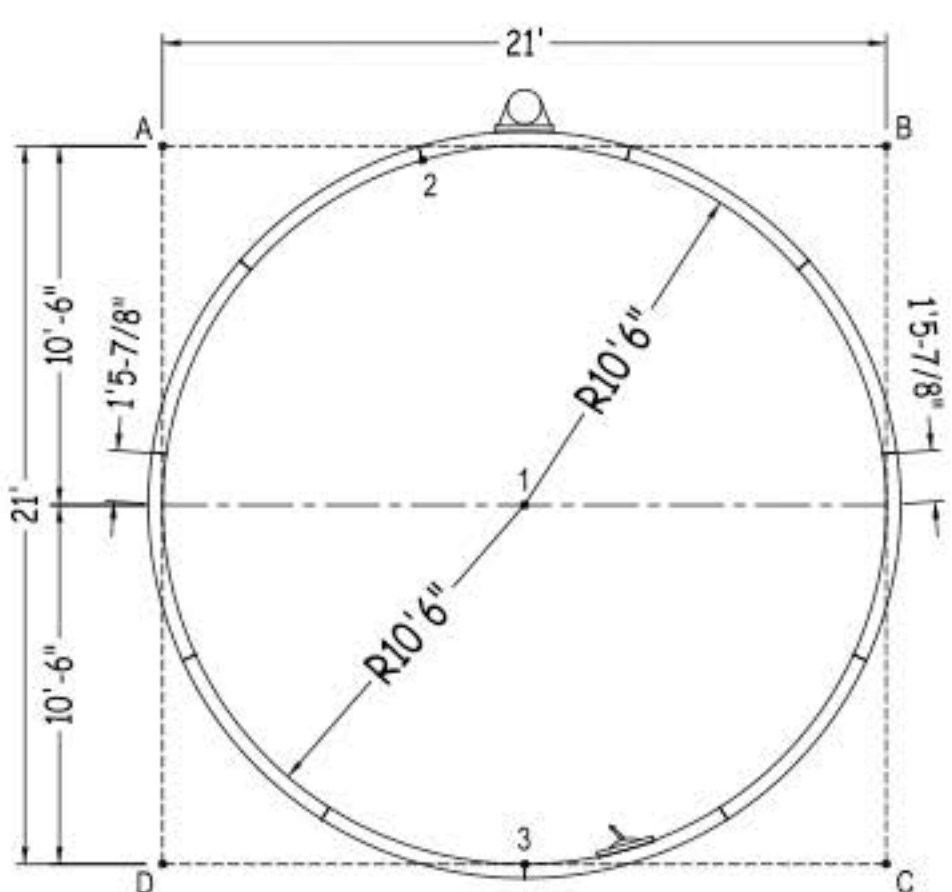
ROUND

SHEET: 1 OF 2

Diagonals	47
2 To 3	20'-9 1/2"

Part number	Description	QTY	Option 1
RA0721260X	10'6"Rx6"	8	7
RA0721260*	10'6"Rx6" SKIMMER	1	1
RA0721260*	10'6"Rx6" RETURN	1	1
RA0481260X	10'6"Rx4"	-	1
RA0121260S	10'6"Rx1" STEP	-	2
RA072102SC	6'0"X4" STEP CONNECTOR	-	1
Brace**	Brace	-	2
IPC-BT52WCS-2	COMPRESSION STRAP 2PC	11	13
IPC-DRVSTK12G	BRACE COMP D-STK 3"X24" 90D 12G	-	2
IPC-STKPK25	REBAR STAKE 18" 25PC	1	1
IPC-HDWSTRT150	BOLT STR 3/8-16X1" C/W NUT 150PC	1	1
STP69X4P	ACRYLIC STEP FRENCH CURVE 6" (48")	-	1

** RECOMMENDED BRACE: Generic (XXX-XXX)



	A	B	C	D
1	14'-10 1/4"	14'-10 1/4"	14'-10 1/4"	14'-10 1/4"
2	7'-6 3/4"	13'-5 1/2"	24'-7"	21'-11"
3	23'-5 3/4"	23'-5 3/4"	10'-5 3/4"	10'-6 1/4"
A	-	21'0"	29'-8 1/2"	21'0"