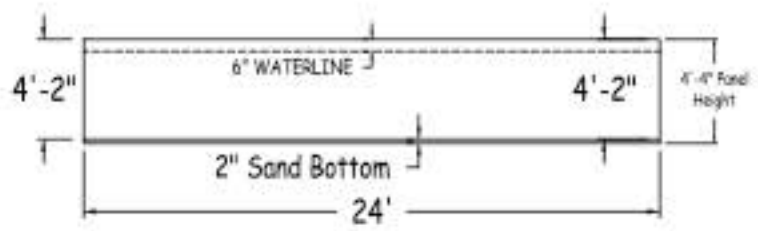
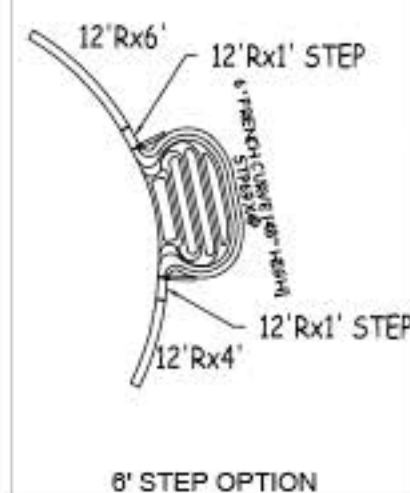
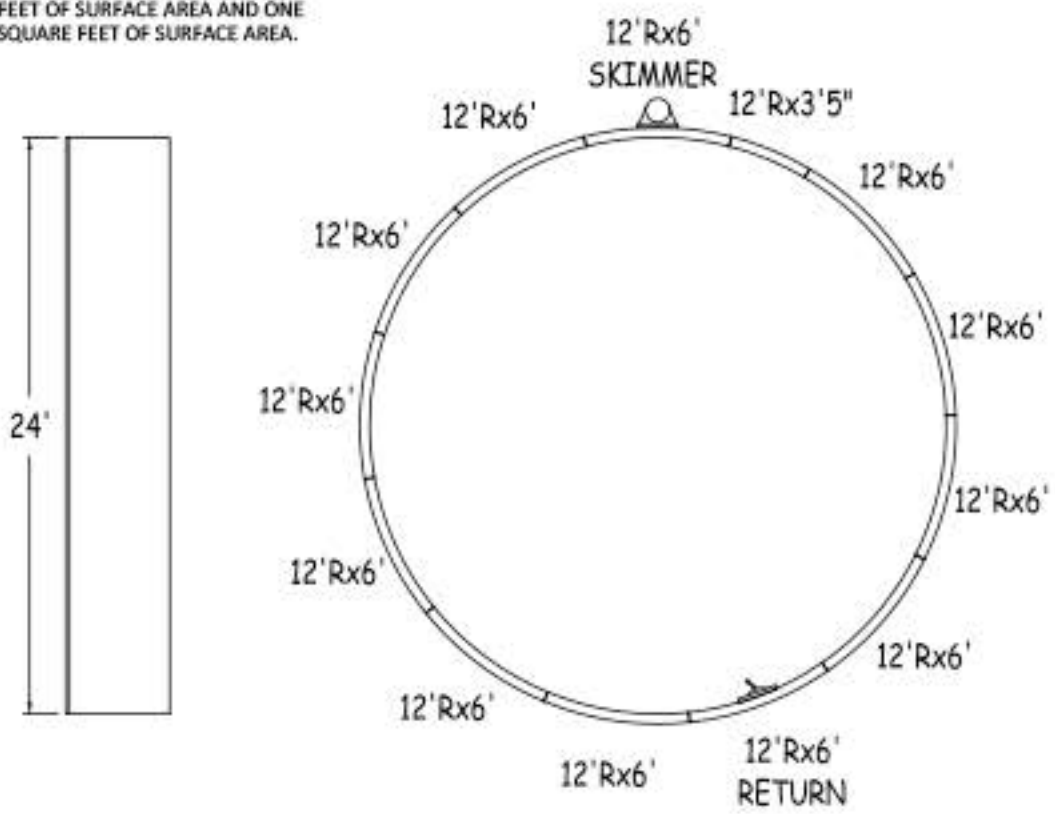


IN ACCORDANCE WITH ANSI/APSP/ICC-5 2011, THE INSTALLER IS RESPONSIBLE FOR PLACING ONE SKIMMER FOR EVERY 800 SQUARE FEET OF SURFACE AREA AND ONE RETURN FOR EVERY 300 SQUARE FEET OF SURFACE AREA.



Bartop OG Pool System		ROUND 24-0 X 24-0	
52" STEEL PANELS	PERIMETER: 75'5"	VOLUME (US Gal): 12400	
DWG#: B5ROFBS2424-14	SURFACE (sq ft): 452	VOLUME (Liters): 46900	
KIT#: ROFBS2424	LINER (ft ²): 452	DATE: 1/1/2014	DSR: N/A
	COVER (ft ²): 676	SCALE: 1/8" = 1'-0"	

ALWAYS ENTER POOL

NON-DIVING POOL

USE OF DIVING EQUIPMENT IS PROHIBITED

Feet First

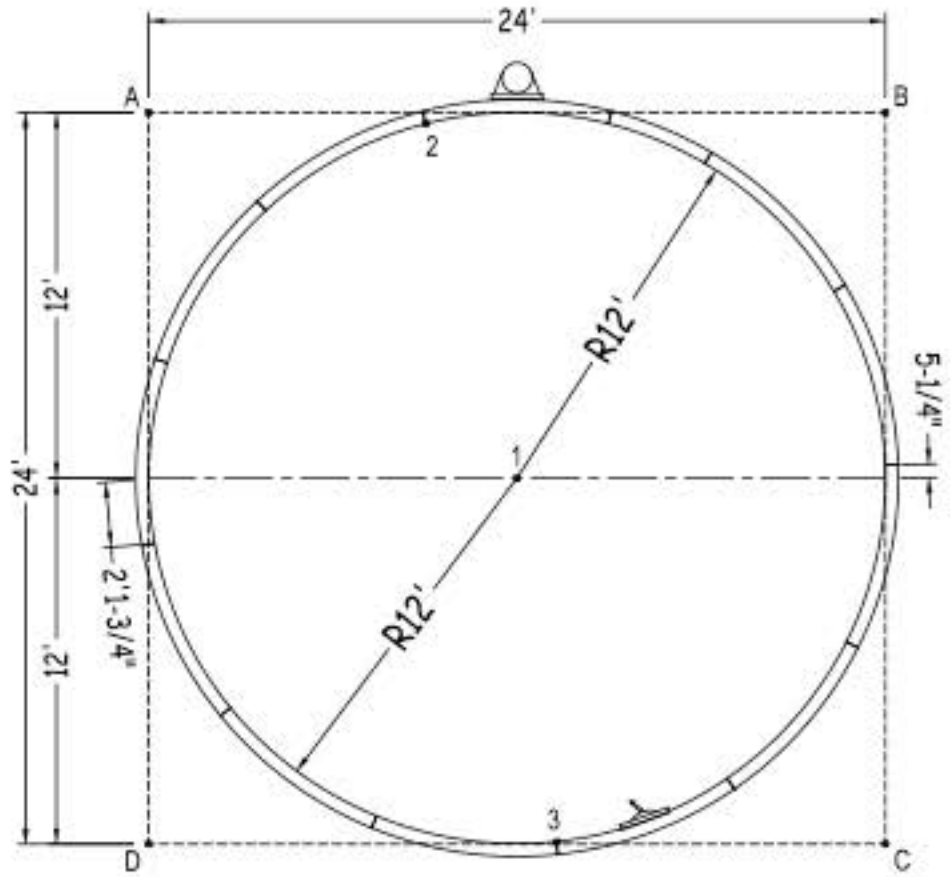
MEETS DEPTH AND SHAPE MINIMUM STANDARD ANSI/APSP/ICC-5 2011

SHEET: 1 OF 2

Diagonals
2 To 3 23'-11 1/4"

Part number	Description	QTY	Option / Base
RA0721440X	12'Rx6'	10	8
RA0721440*	12'Rx6' SKIMMER	1	1
RA0721440*	12'Rx6' RETURN	1	1
RA0481440X	12'Rx4'	-	1
RA0411440X	12'0"Rx3'5"	1	1
RA0121440S	12'Rx1' STEP	-	2
RA072102SC	6'0"X4' STEP CONNECTOR	-	1
Brace**	Brace	-	2
IPC-BT52WCS-2	COMPRESSION STRAP 2PC	13	15
IPC-DRVSTK12G	BRACE COMP D-STK 3"X24" 90D 12G	-	2
IPC-STKPK25	REBAR STAKE 18" 25PC	1	1
IPC-HDWSTRT150	BOLT STR 3/8-16X1" C/W NUT 150PC	1	2
STP69X4P	ACRYLIC STEP FRENCH CURVE 6" (48")	-	1

** RECOMMENDED BRACE: Generic (XXX-XXX)



	A	B	C	D
1	16'-11 3/4"	16'-11 3/4"	16'-11 3/4"	16'-11 3/4"
2	9'-1/2"	14'-11 3/4"	27'-11 3/4"	25'-3 1/2"
3	27'-4 1/2"	26'-2 1/2"	10'-8 1/2"	13'-3 1/2"
A	-	24'0"	33'-11 1/4"	24'0"

ROUND 24-0 X 24-0

DWG #: B5ROFBS2424-14

DATE: 1/1/2014

SHEET: 2 OF 2