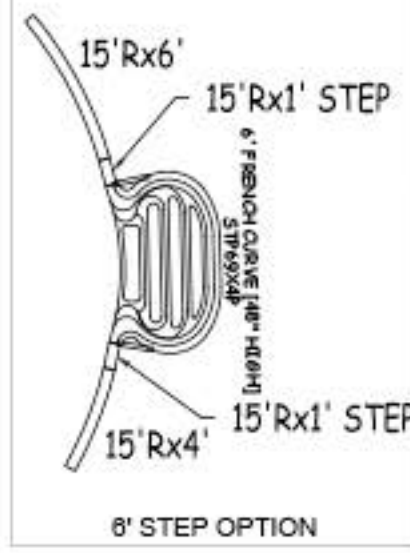
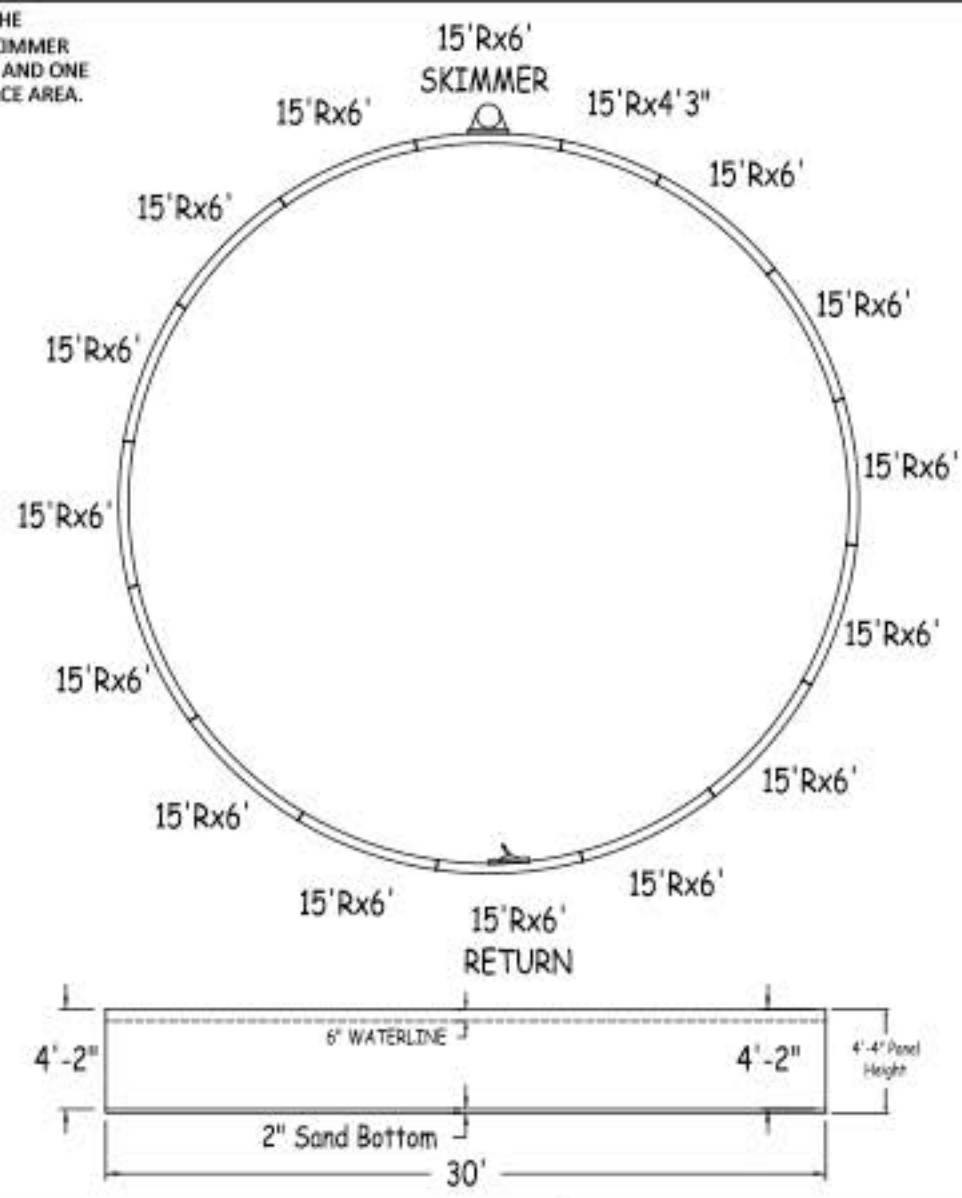
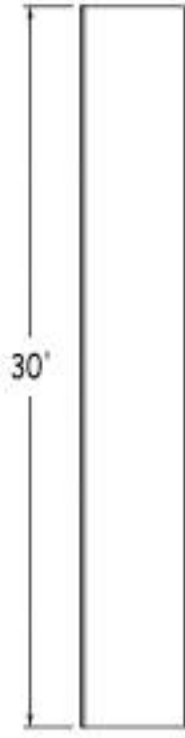


IN ACCORDANCE WITH ANSI/APSP/ICC-5 2011, THE INSTALLER IS RESPONSIBLE FOR PLACING ONE SKIMMER FOR EVERY 800 SQUARE FEET OF SURFACE AREA AND ONE RETURN FOR EVERY 300 SQUARE FEET OF SURFACE AREA.



**Bartop**  
OG Pool System

**ROUND 30-0 X 30-0**

52" STEEL PANELS	PERIMETER:	94'3"	VOLUME (US Gal):	19400
DWG#: B5ROFBS3030-14	SURFACE (ft²):	707	VOLUME (Liters):	73400
KIT#: ROFBS3030	LINER (ft²):	706	DATE: 1/1/2014	DSR: N/A
	COVER (ft²):	1024	SCALE: 1/8" = 1'-0"	



**NON-DIVING POOL**

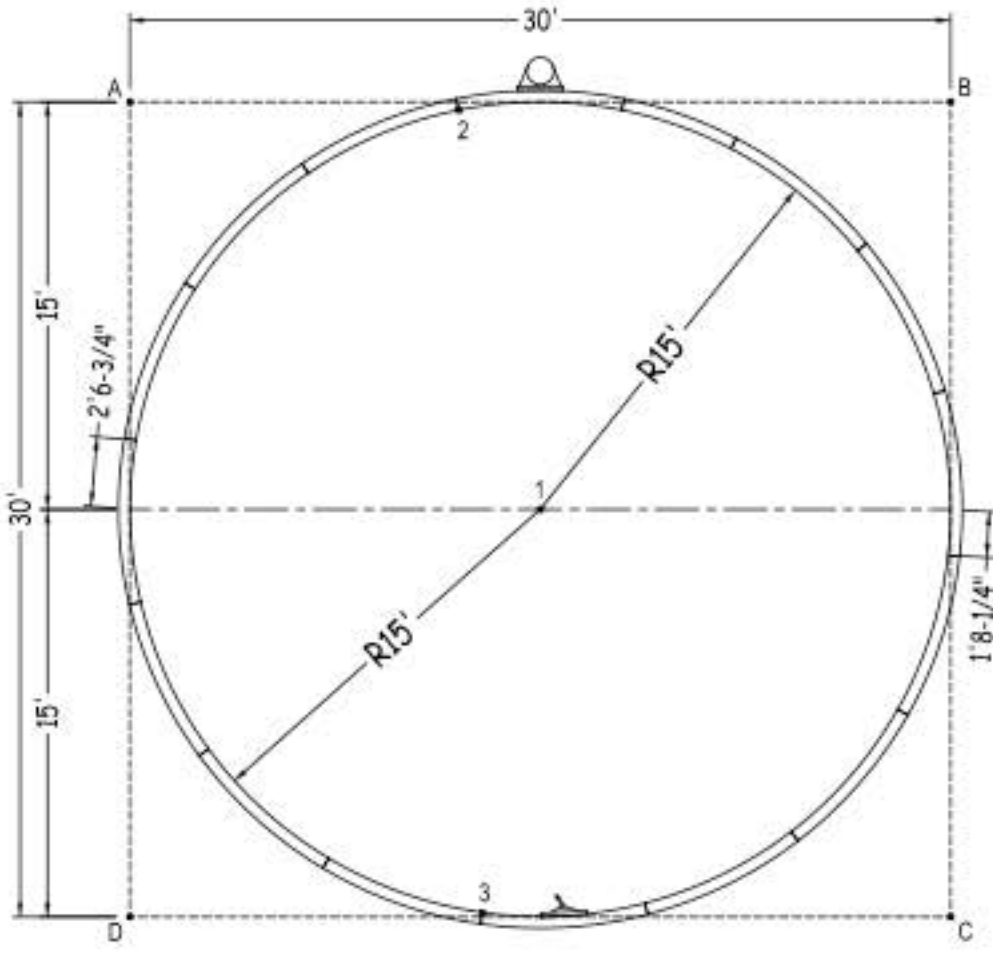
USE OF DIVING EQUIPMENT IS PROHIBITED

MEETS DEPTH AND SHAPE MINIMUM STANDARD ANSI/APSP/ICC-5 2011

**ROUND**

SHEET: 1 OF 2

Diagonals
2 To 3 29'-6 3/4"



Part number	Description	QTY	Option / Base
RA0721800X	15'Rx6'	13	11
RA0721800*	15'Rx6' SKIMMER	1	1
RA0721800*	15'Rx6' RETURN	1	1
RA0511800X	15'Rx4'3"	1	1
RA0481800X	15'Rx4'	-	1
RA0121800S	15'Rx1' STEP	-	2
RA072102SC	6'0"X4" STEP CONNECTOR	-	1
Brace**	Brace	-	2
IPC-BT52WCS-2	COMPRESSION STRAP 2PC	16	18
IPC-DRVSTK-12G	BRACE COMP D-STK 3"X24" 90D 12G	-	2
IPC-STKPK25	REBAR STAKE 18" 25PC	1	1
IPC-HDWSTRT150	BOLT STR 3/8-16X1" C/W NUT 150PC	2	2
STP69X4P	ACRYLIC STEP FRENCH CURVE 6" (48")	-	1

\*\* RECOMMENDED BRACE: Generic (XXX-XXX)

	A	B	C	D
1	21'-2 1/2"	21'-2 1/2"	21'-2 1/2"	21'-2 1/2"
2	12'-1/4"	17'-11 3/4"	34'-8 3/4"	32'-1/2"
3	32'-6 1/4"	34'-5"	17'-1 1/2"	12'-10 1/2"
A	-	30'0"	42'-5"	30'0"

ROUND 30-0 X 30-0

DWG #: B5ROFBS3030-14

DATE: 1/1/2014

SHEET: 2 OF 2