

TOOLS NEEDED

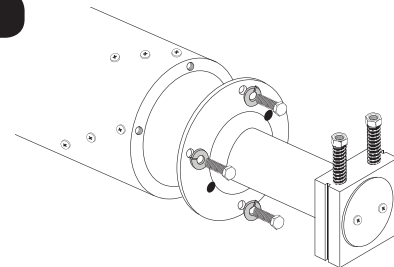
- | | | | |
|-------------------------------|-------------------------------------|--|--------------------|
| 1. Socket wrenches | 2. Utility knife | 3. Cordless drill | 4. Half round file |
| 5. Hacksaw | 6. #2 Phillips bit | 7. Rubber mallet | 8. Electrical tape |
| 9. Circular saw (optional) | 10. Scissors | 11. Lighter | |
| 12. Combo wrench: 1/2", 9/16" | 13. Drill bits: 1/4", 3/16", 11/64" | 14. Allen wrenches: 3/16", 5/32", 1/8" | |

STEP 1: MECHANISM ASSEMBLY

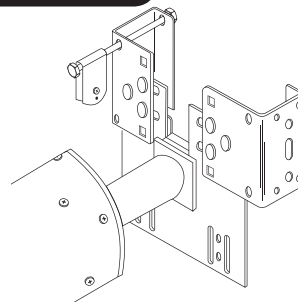
INSTRUCTIONS

- 1.1 Attach Opposite End Casting to Tube using 5/16" x 3/4" bolt and lock washer.
- 1.2 Slide nylon bearing into Opposite End bracket. Be sure the adjustment nuts are pointing upward.
- 1.3 Attach tube to Motor Side pedestal.
- 1.4 Install Channel Plates, found in kit KA-0326, for mechanism and opposite end brackets. (A) Tilt Channel Plate back and insert up into the bracket. (B) Slide bracket up to the top of the channel. (C) Let Channel Plate rest in place.

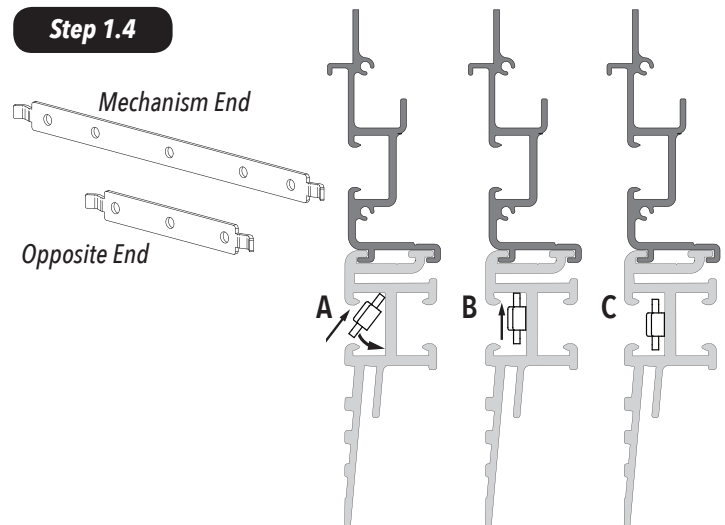
Step 1.1



Step 1.2



Step 1.4



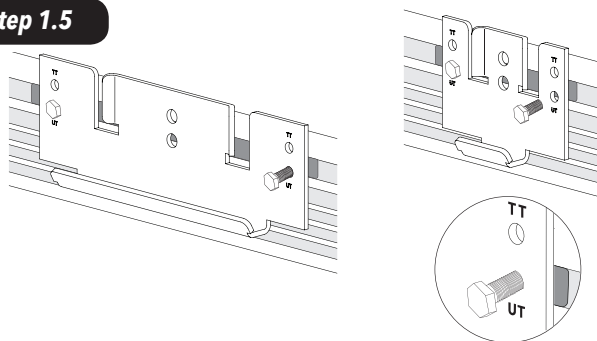
INSTRUCTIONS (CONTINUED)

- 1.5 Install Drop In Brackets, found in kit KA-0326, on the Mechanism End and Opposite End with Bolts found in kit KA-0122. Install bolts into the "UT" (Under Track) holes of the bracket. Leave bolts loose to allow for adjustment after next step.

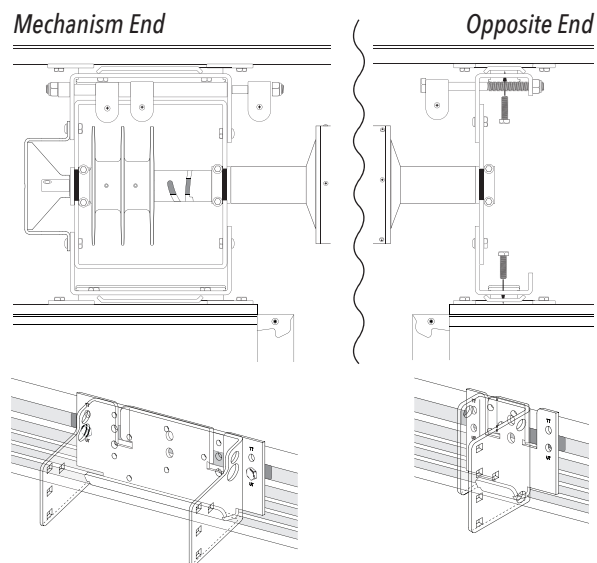
IMPORTANT: Be sure the bolts are in the "UT" holes of the bracket. The "TT" holes are for Top Track system installations only.

- 1.6 Lower the assembled mechanism onto hanger brackets. Ensure each mounting bracket is straddling the proper hanger bracket and loosely fasten mounting bracket to channel plate through hanger bracket with Bolts.
- 1.7 Align assembled unit side to side as illustrated. When properly aligned, tighten all bolts.

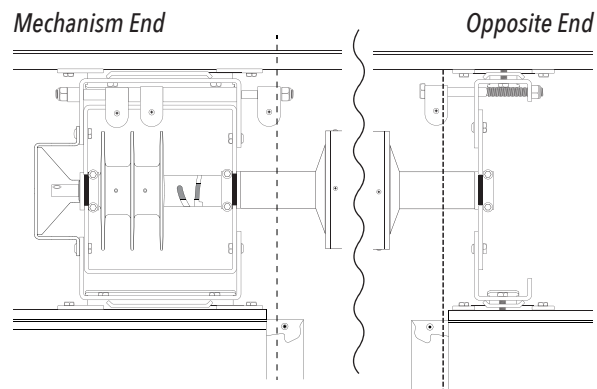
Step 1.5



Step 1.6



Step 1.7



STEP 2: TRACK INSTALLATION

INSTRUCTIONS

The track system provides the pathways through which the cover and ropes move as the cover travels across the pool. Proper preparation is crucial for making sure that the cover runs smoothly.

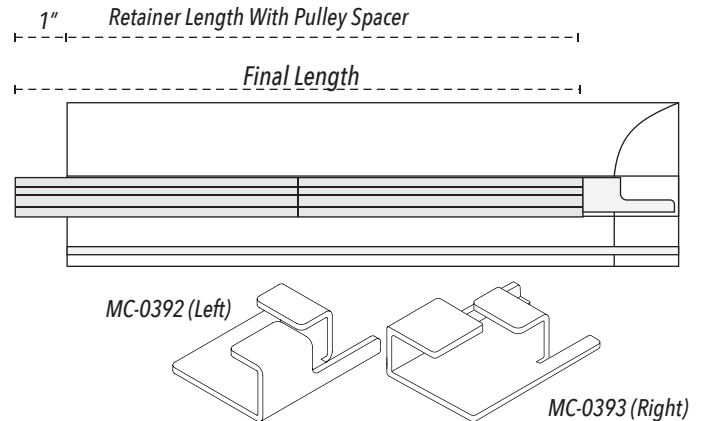
- 2.1 Measure track length and cut track to size.

IMPORTANT: Cut track at end that goes into the Polymer Box. Maintain factory edges along length of the track and at pulley end.

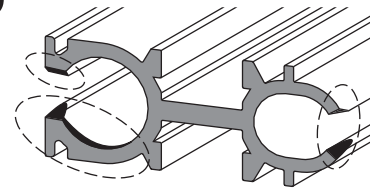
When determining track length, account for pulley spacers (found in kit KA-0155 - only used with 2 channel track), and allow for track to extend 1" into Polymer Box from end of retainer.

- 2.2 Countersink and file track at each end in area shown. File down any sharp edges inside the track channel. Install splices with set bolt.
- 2.3 Unwrap and unroll cover behind box, with matte side upward. Unwind ropes. Thread ropes through large channel of track and lead to end of track. Wind rope around pulley, and thread rope through back side. Repeat with other side.
- 2.4 Place track into retainer, making sure pulley and splice stay in place. Push track as far forward as possible.

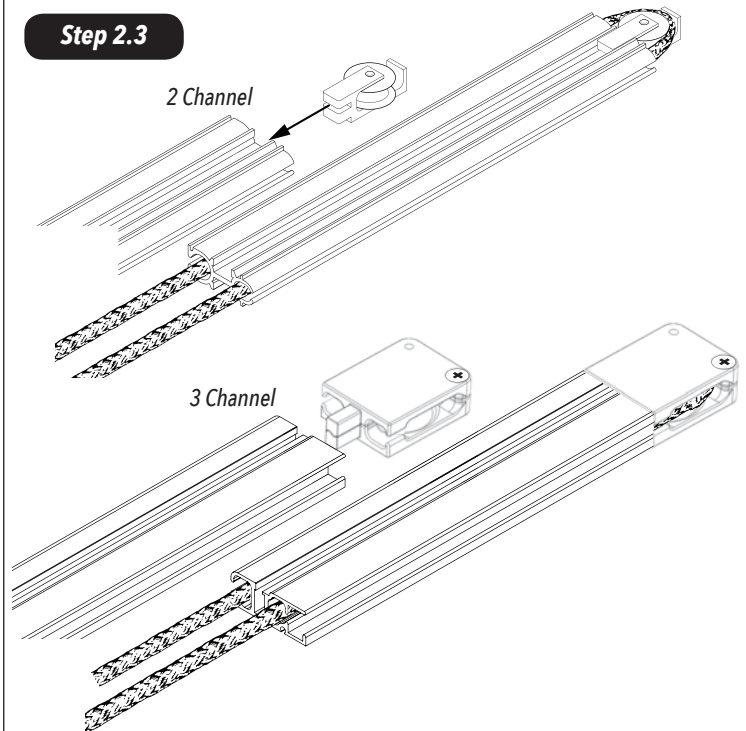
Step 2.1



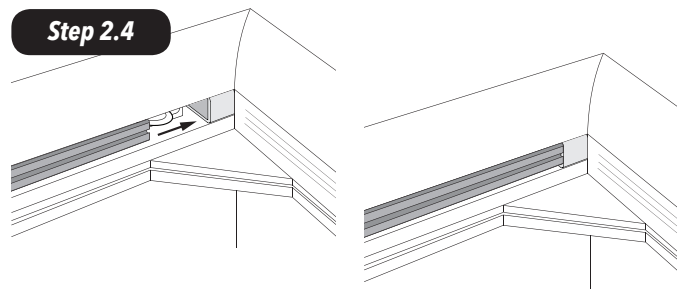
Step 2.2



Step 2.3



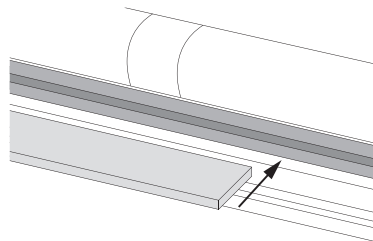
Step 2.4



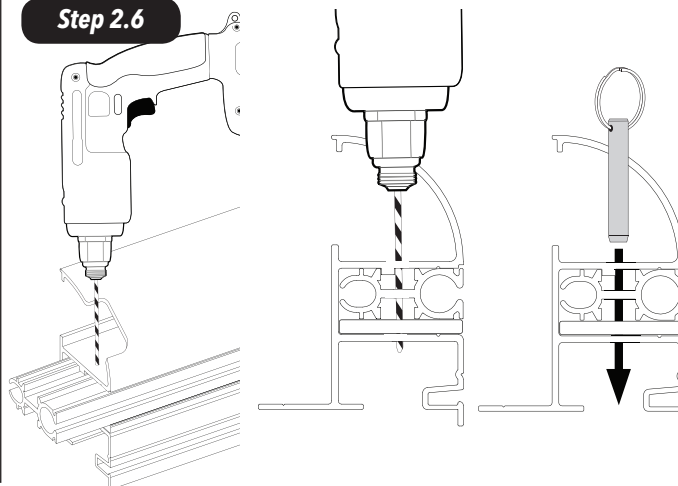
INSTRUCTIONS (CONTINUED)

- 2.5 Starting at pulley end of track, insert wedges under the track. Use rubber mallet to ensure wedge is fully seated. Trim last piece 1 1/2" shorter than the end of the retainer.
- 2.6 With a 1/4" bit, drill through top of retainer, track, and bottom of retainer. Fasten track to retainer by pushing the Locking Pin (kit KA-0155) in through the holes.

Step 2.5



Step 2.6



STEP 3: COVER INSTALLATION

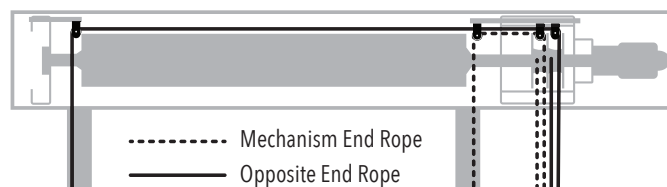
INSTRUCTIONS

With cover still folded behind the box, install the filler strip in the wall cap. Access to this area will be difficult after the cover is in place. Install the filler strip in the other end of the pool.

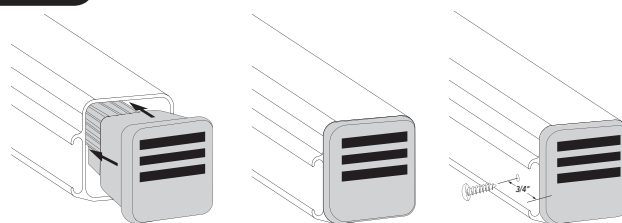
- 3.1 Route ropes through pulleys and leave extra length lying on deck on motor end.
- 3.2 Insert adjustable Dowels into each end of lead edge. Use rubber mallet to make sure dowel is seated properly. Using a 11/64" bit, drill a pilot hole 3/4" in from the end of the Dowel to prevent it from coming out of the Lead Edge. Insert screw to secure Dowel. Only drill through the lead edge.
- 3.3 Attach glider bracket to glider on opposite side. Guide glider and cover corner into track while pulling gently on rope. Pull cover until approximately 6" into track.

NOTE: If installing a sensor, install the magnet into the front of the webbing before inserting the cover into the track.

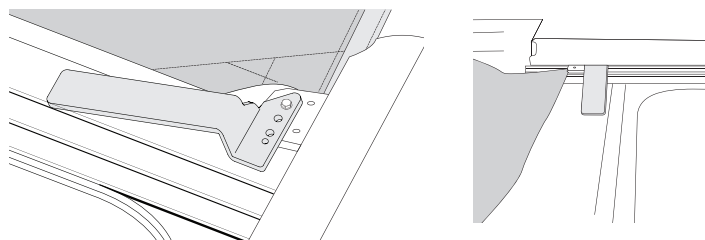
Step 3.1



Step 3.2



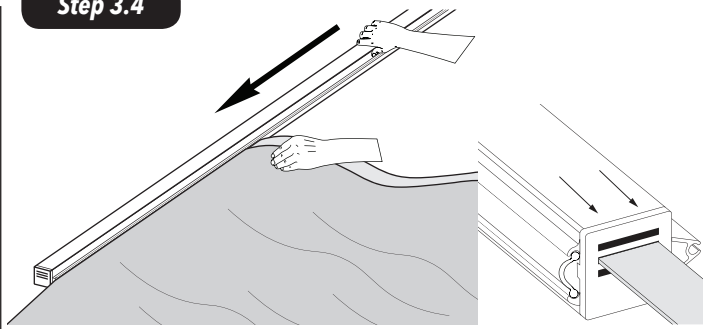
Step 3.3



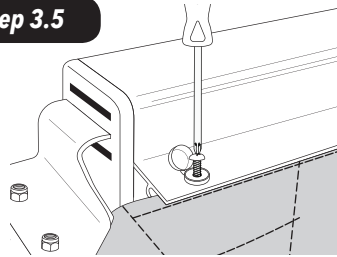
INSTRUCTIONS (CONTINUED)

- 3.4 Starting on the opposite side of the previously assembled glider, slide the front edge of the fabric into the lead edge channel. Hold the fabric taut and slide the lead edge until it reaches the glider bracket. Insert glider bracket into appropriate slot, and slide lead edge as far as possible. Cover extending beyond lead edge is deliberate.
- 3.5 Adjust cover corner within lead edge at opposite end and insert lead edge screw and screw cover, through lead edge channel into front edge of cover.
- 3.6 With lead edge screw and screw cover in place, starting at the carriage side and work towards the opposite side, pulling the slack of front of lead edge into lead edge channel.
- 3.8 Insert remaining glider bracket into lead edge dowel, in same slot as opposite side. Attach bracket to glider with supplied hardware. Tighten until snug, then back off slightly to allow the glider and glider bracket the ability to pivot slightly as cover travels across pool.
- 3.9 Feed glider and cover into track while gently pulling on rope.
- 3.10 With both corners of cover in track, install guides. Use top half of guide as template and drill hole for hardware. Use 1/4" bit to make hole, then remove top half of guide, and use slightly larger bit to make installation easier.
- 3.11 Fasten guides to track with supplied hardware. Insert remaining cap screw in back end of guide and fasten together with nut.

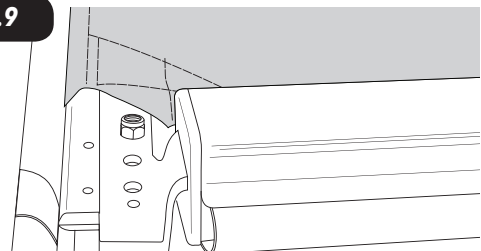
Step 3.4



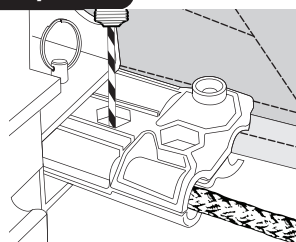
Step 3.5



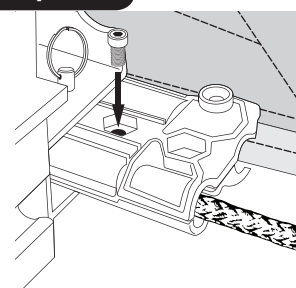
Step 3.9



Step 3.10



Step 3.11



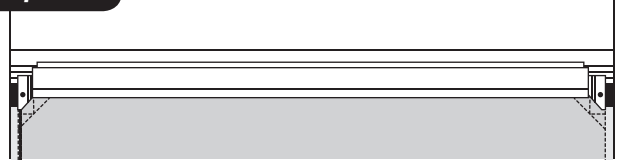
INSTRUCTIONS (CONTINUED)

- 3.12 Adjust lead edge until parallel to wall cap by gently pulling on appropriate rope. When satisfied with position, measure rope 8'-10' from front edge of box and cut each rope in same place.

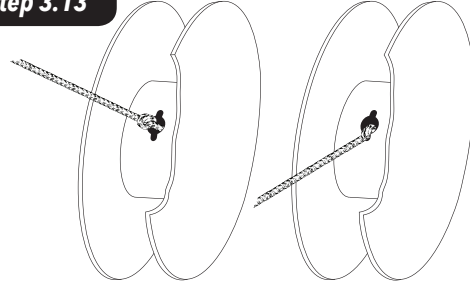
IMPORTANT: Do not cut ropes when cover is closed.

- 3.13 Tie knots in end of rope and insert into appropriate side of rope reel. Use controller to operate cover in "close" direction and guide excess rope onto reel in uniform manner.
- 3.14 Continue to operate cover in "close" direction, until lead edge reaches end of pool. Cover should feed into track smoothly and evenly. If cover catches at guide, or one side of lead edge stops in track, release controller, and evaluate.
- 3.15 Attach cover to tube according to diagram at right. Start at one end, align edge of webbing with edge of tube.
- 3.16 Use controller to open cover enough to take up extra length of cover loosely around tube. Cuff edges of cover at each end. Open cover completely.
- 3.17 Assemble Lid Seam Support Bracket (KA-0355) and Lid Lock components.
- 3.18 Attach left and right fascia by placing into channel on front of lid, bottom edge first and then tilt up and in.
- 3.19 Measure the distance between the left and right pieces to determine the middle piece. Cut to appropriate length and attach in the same way as the left and right pieces.

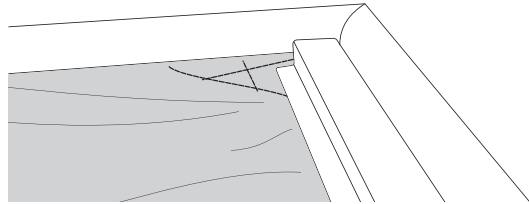
Step 3.12



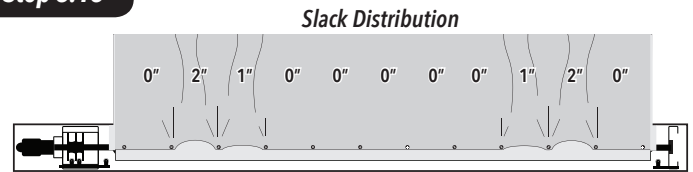
Step 3.13



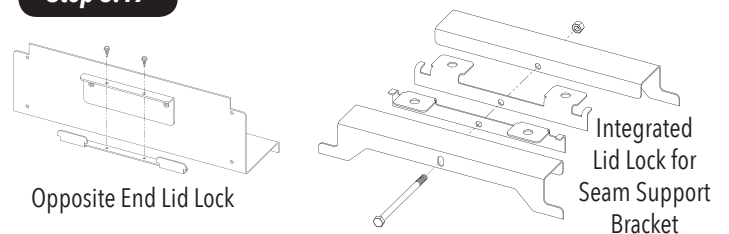
Step 3.14



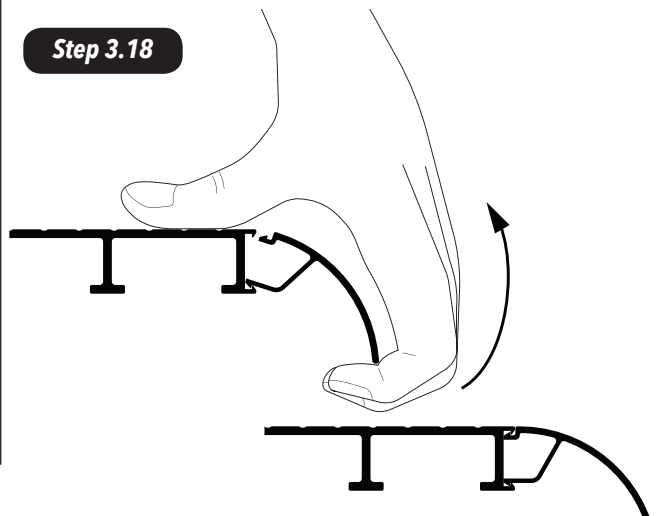
Step 3.15



Step 3.17



Step 3.18



STEP 4: COVER ADJUSTMENT

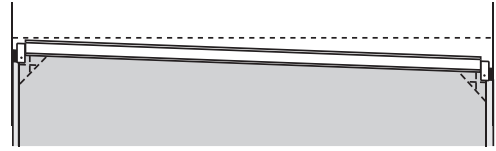
INSTRUCTIONS

If the cover opens crookedly, adjust the rope that corresponds to the side that is **closest to the lid**.

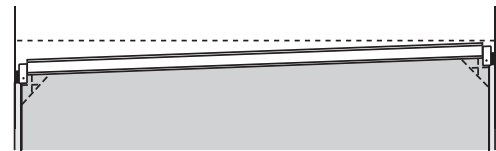
In illustration 4.1, the **RIGHT** side rope need to be adjusted. Take all rope off the rope reel. **SHORTEN** the rope for this side by adjusting the location of the knot that is inserted into the rope reel approximately the same distance that the cover is crooked. Place rope back onto the reel and close cover.

In illustration 4.2, the **LEFT** side rope need to be adjusted. Take all rope off the rope reel. **SHORTEN** the rope for this side by adjusting the location of the knot that is inserted into the rope reel approximately the same distance that the cover is crooked. Place rope back onto the reel and close cover.

III. 4.1



III. 4.2



TECHNICAL SUPPORT

If you have any questions about these installation procedures, please contact Technical Support (800) 878-5789 Monday through Friday, 8 am - 5 pm EST.