

# Primo Kamado Grill Assembly Instructions

Two Adults are Needed to Assemble the Grill.

Tools Needed: Box Cutter, 11mm or Adjustable Wrench & Large Phillips Head Screwdriver.

**IMPORTANT: DO NOT LIFT GRILL BY THE HINGE WHEN INSERTING INTO CRADLE**

**1** When the Primo Kamado Grill arrives, select a level area with plenty of working space such as a driveway or parking lot.



**2** Open the top of the box, remove the two main cradle parts and set them aside. Note: one has a notched top bar.



**3** Remove the two side shelves and four brackets and set them aside.



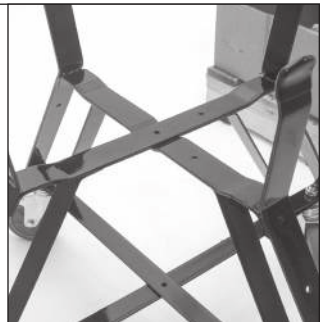
**4** Use a box cutter and cut vertically down one of the corners. Firmly pull away the four cardboard sides and discard.



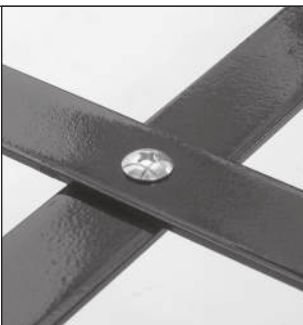
**5** Open the grill and remove the ash tool, grate lifter, owners manual and the cradle hardware package.



**6** Insert the cradle part with the notched top bar horizontally then turn upright to form an "X" shape and align holes.



**7** Insert Phillips Head Screw through the two bottom bars. Use a locking washer, then nut. **FINGER TIGHTEN ONLY AT THIS TIME.**



**8** Insert a threaded stud into the two top bars. Use a locking washer and one of the nuts. **FINGER TIGHTEN ONLY AT THIS TIME.**



**9** Align the metal cross-member bar with the holes and use the remaining threaded studs and nuts. **TIGHTEN ALL FASTENERS FROM PRIOR STEPS.**



**10** Align the cradle with the grill. Make sure the locking casters are locked and the furthest from the grill.



**11** Remove the internal components of the grill while one person holds the grill in place to prevent it from tipping over.



**12** Two adults are required on each side of grill. Lift grill by placing one hand under the bottom of the grill and one on the base just below the hinge. **DO NOT LIFT BY HINGE**



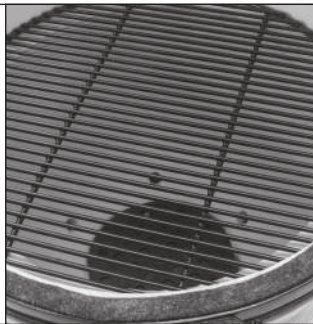
**13** Make sure the draft door is centered and the locking casters are in front. You may need to push down on the grill to seat it properly.



**14** Insert the fire box into the grill. Make sure the opening in the fire box is aligned with the draft door opening.



**15** Insert the charcoal grate in the bottom of the fire box, then add the cooking grate as shown in the photo.



**16** Attach the two brackets to the side shelves with 4 screws per shelf in the outermost holes as shown. Repeat for opposite shelf assembly.



**17** Attach the side shelves as shown. Side shelves may be folded downward or removed when not in use.



Folded Down

### Final Notes After Assembly

- Always pull the grill carefully when moving.  
**Never push grill to prevent the potential of it tipping it over.**
- When the grill is in the desired location, push down the tabs on the locking casters to set the locks.

