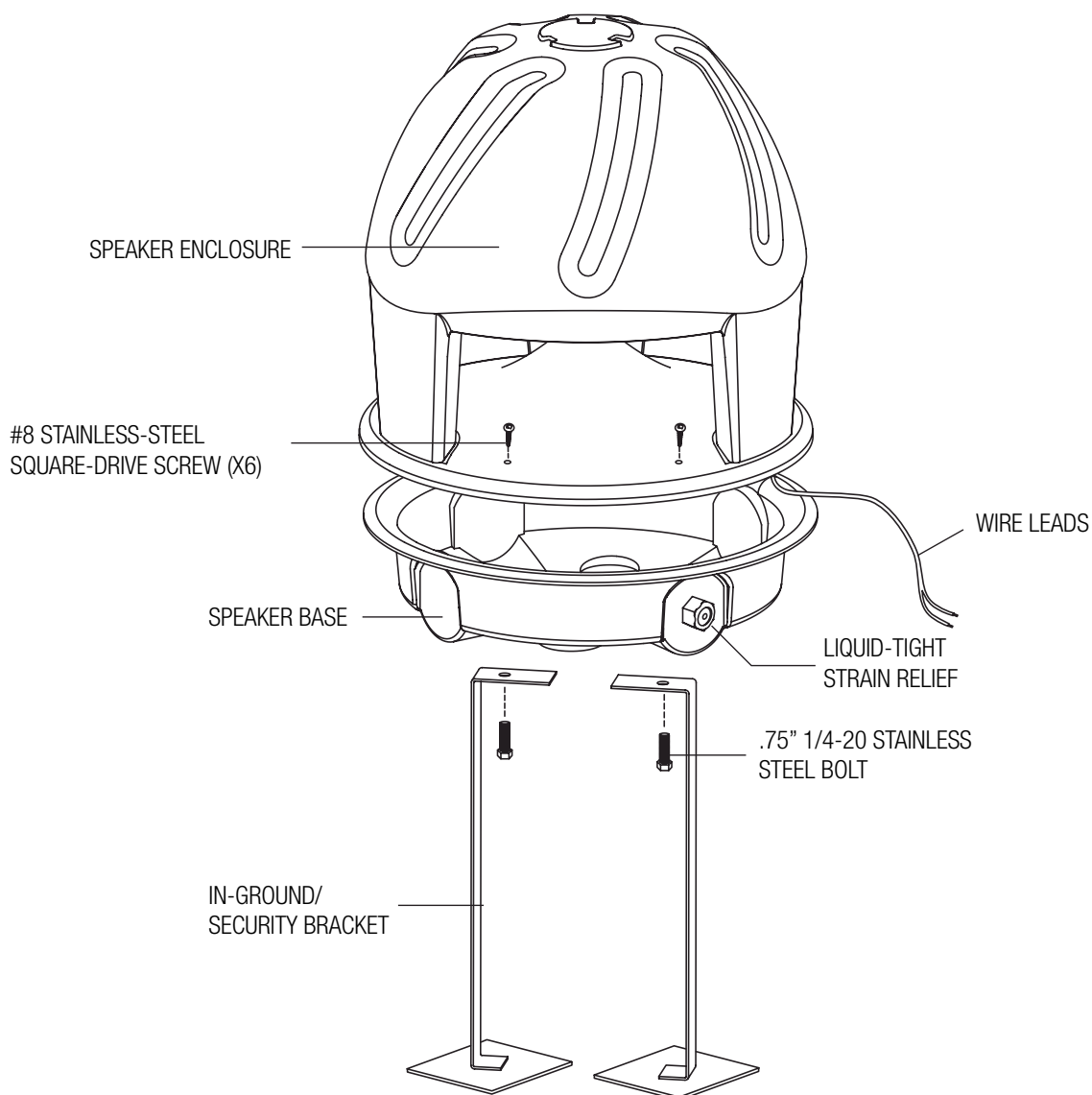




[SOLARIS[®]] outdoor series SPF-55 & SPF-85

OWNER'S MANUAL & INSTALL GUIDE

SPF-55 • SPF-85

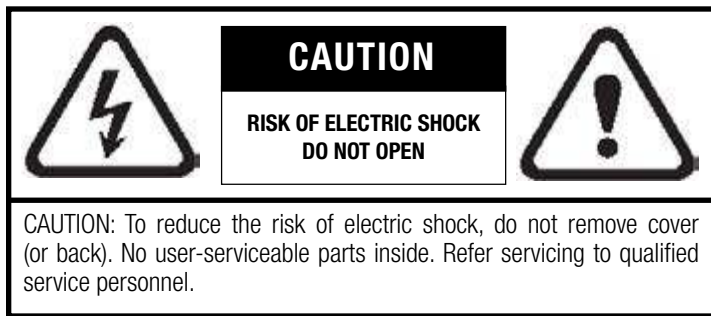


[BOX CONTENTS]

1 IN-GROUND SPEAKER
1 ANTI-THEFT DEVICE (2 PEICES)
1 LIQUID-TIGHT COMPRESSION FITTING
1 SQUARE DRIVE BIT
2 WIRE NUTS
6 #8 STAINLESS-STEEL SQUARE-DRIVE SCREWS
2 .75" 1/4-20 STAINLESS STEEL BOLTS

SAFETY INSTRUCTIONS 3
GETTING STARTED AND PRECAUTIONARY NOTES 4
INSTALLING YOUR SOLARIS SPEAKER 4
CARING FOR YOUR SOLARIS SPEAKER 5
MAINTENANCE AND SERVICE 5
WARRANTY 5
SPECIFICATIONS 5

[SAFETY INSTRUCTIONS]



Explanation of Graphical Symbols



The lightning flash with arrowhead symbol, within an equilateral triangle, is intended to alert you to the presence of un-insulated "dangerous voltage" within the product's enclosure that may be of sufficient magnitude to constitute a risk of electric shock to persons.



The exclamation point within an equilateral triangle is intended to alert you to the presence of important operating and maintenance (servicing) instructions in the literature accompanying the appliance.

1. Read Instructions - All the safety and operating instructions should be read before the appliance is operated.

2. Retain Instructions - The safety and operating instructions should be retained for future reference.

3. Heed Warnings - All warnings on the appliance and in the operating instructions should be adhered to.

4. Follow Instructions - All operating and other instructions should be followed.

5. Water and Moisture - The appliance should not be used near water - for example, near a bathtub, washbowl, kitchen sink, laundry tub, in a wet basement, or near a swimming pool, etc.

6. Carts and Stands - The appliance should be used only with a cart or stand that is recommended by the manufacturer.

PORTABLE CART WARNING



7. Wall or Ceiling Mounting - The appliance should be mounted to a wall or ceiling only as recommended by the manufacturer.

8. Ventilation - The appliance should be situated so that its location or position does not interfere with its proper ventilation. For example, the appliance should not be situated on a bed, sofa, rug, or similar surface that may block the ventilation openings; or placed in a built-in installation, such as a bookcase or cabinet

that may impede the flow of air through the ventilation openings.

9. Heat - The appliance should be situated away from heat sources such as radiators, stoves, or other appliances that produce heat.

10. Power Source - The appliance should be connected to a power supply only of the type described in the operating instructions or as marked on the appliance.

11. Power Cord Protection - Power supply cords should be routed so that they are not likely to be walked on or pinched by items placed up or against them, paying particular attention to cords at plugs, convenience receptacles, and the point where they exit from the appliance.

12. Cleaning - The appliance should be cleaned only as recommended by the manufacturer.

13. Nonuse Periods - The power cord of the appliance should be unplugged from the outlet when left unused for a long period of time.

14. Object and Liquid Entry - Care should be taken so that neither objects fall nor liquids spill into the inside of the appliance.

15. Damage Requiring Service - The application should be serviced by qualified service personnel when:

- a. the power supply cord or the plug has been damaged,
- b. objects have fallen onto or liquid has been spilled into the appliance,
- c. the appliance has been exposed to rain,
- d. the appliance does not appear to operate normally or exhibits a marked change in performance, or
- e. the appliance has been dropped or the cabinet damaged.

16. Servicing - The user should not attempt to service the appliance beyond those means described in the operating instructions. All other servicing should be referred to qualified service personnel.

17. Grounding or Polarization - Precautions should be taken so that the grounding or polarization means of an appliance is not defeated.

APPLICABLE FOR USA, CANADA OR WHERE APPROVED FOR USAGE

CAUTION: TO PREVENT ELECTRIC SHOCK, MATCH WIDE BLADE PLUG TO WIDE SLOT, INSERT FULLY.

ATTENTION: POUR EVITER LES CHOCs ELECTRIQUES, INTRODUIRE LA LAME LA PLUS LARGE DE LA FICHE DANS LA BORNE CORRESPONDANTE DE LA PRESE ET POUSSER JUSQU'AU FOND.

Thank you for choosing Phase Technology® speakers. We know there are a wide variety of choices available today, and we sincerely appreciate your purchase of our product. Phase Technology speakers are built to exacting standards and will provide many years of listening enjoyment. Our speakers are the result of over five decades of designing and manufacturing. We hold many key patents in loudspeaker technology including the soft-dome tweeter. Our mission, our passion is to constantly advance the art and science of accurate audio reproduction. Our dedication insures your new speakers will accurately reproduce all the impact, detail and delicacy of today's digital technology.

Regardless of application, serious audiophile listening or home theater, we recommend that you take the time to read this manual thoroughly before connecting speakers to your amplifier or receiver. In the highly unlikely event that you should experience a problem with set-up or operation, please contact one of our authorized dealers for assistance, or contact us directly.

Phase Technology Corporation
8005 W. 110th St., Suite 208
Overland Park, KS 66210
855.663.5600 (Domestic)
+1.913.663.5600 (International)
913.663.3200 (Fax)

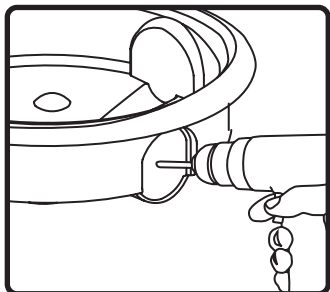
[GETTING STARTED AND PRECAUTIONARY NOTES]

For proper connection and therefore full enjoyment of your new Phase Technology® speakers, we encourage you to read this owners' manual thoroughly, even if you are very familiar with installing speakers.

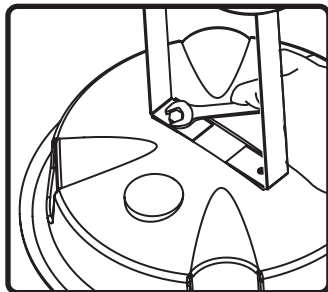
The Solaris® speaker is designed for indoor and outdoor playback of music and home theater sources. These omnidirectional speakers feature powder-coated aluminum grilles and stainless steel fasteners that weather the elements and includes theft-resistant mounting hardware.

Speaker placement is very subjective. Each speaker should be positioned properly, relative to the listening area for good coverage.

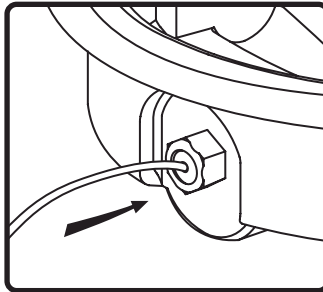
[INSTALLING YOUR SOLARIS OMNIDIRECTIONAL OUTDOOR SPEAKER]



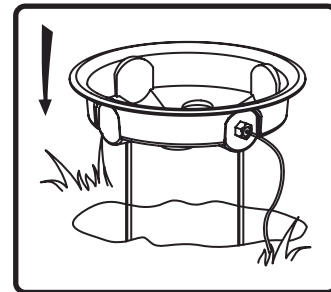
1. If needed for daisy chaining, drill speaker base and install second liquid-tight strain relief (not included).



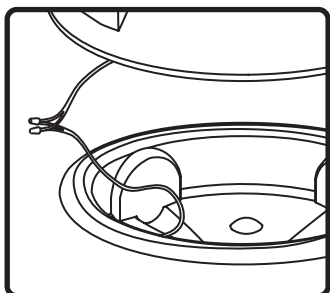
2. Attach in-ground/security brackets to speaker base using stainless steel bolts.



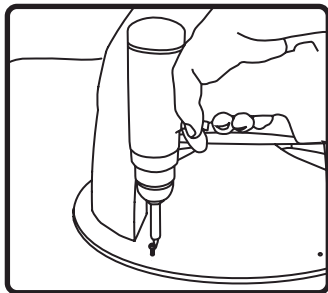
3. Thread signal wire thru liquid-tight strain relief and tighten seal.



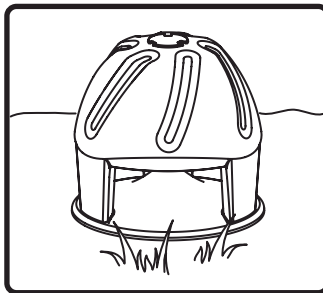
4. Place speaker base into hole in ground with the top rim of the base at ground level. Back-fill dirt into hole, packing firmly. For added security, cement security brackets into ground.



5. Attach signal wire to wire leads. Use wire nuts provided. For added water-proofing, grease caps are recommended.



6. Set speaker enclosure on speaker base. Use tamper-resistant stainless steel screws to attach speaker to base (driver tip and screws provided).



7. DONE!

[CARING FOR YOUR SOLARIS® SPEAKER]

Your Solaris® speakers are engineered for both indoor and outdoor use and operations. Random water hitting the speaker will not damage your Solaris® speakers making it ideally suited for placement in close proximity to swimming pools and spas. The Solaris® speaker is not intended for use underwater.

Ordinary dust and dirt accumulation will not harm the Solaris® speaker. If you wish to clean the Solaris® speaker, household glass cleaning solution sprayed on a paper towel may be used for light cleanup. For heavier stains, a soap and water solution applied with a rag or sponge should remove the dirt and stains. Avoid spraying the Solaris® speaker with a high-pressure hose.

[MAINTENANCE AND SERVICE]

Because of Phase Technology's uncompromising quality control programs, it's unlikely that your speakers will ever need service if connected and used as outlined in this Owners' Manual. In the unlikely event that a problem does occur, please contact your Phase Technology dealer. Your dealer has the necessary factory-authorized parts and trained technicians to quickly restore your speaker to its original performance specifications.

[WARRANTY]

LIMITED WARRANTY: Phase Technology® warrants its loudspeakers to be free from defects in material and workmanship for a period of ten (10) years for speaker product, limited lifetime for CI speakers, and three (3) years for the electronic components to the original purchaser. Purchase must be made from an authorized Phase Technology® dealer.

This warranty does not cover service or parts to repair damage caused by misuse, abuse, damage while in transit, alterations, unauthorized repairs, failure to follow instructions, fire, flood or any other cause beyond the reasonable control of Phase Technology®. Defects in speaker cabinets or grilles must be brought to the attention of your dealer immediately after purchase. This warranty will be void if the products' serial number has been altered or removed.

Should your Phase Technology® product require service, please call the MSE Audio® customer service department for a return authorization. All merchandise returned to Phase Technology without prior authorization will be refused. For your return authorization number, please call 855.663.5600 or email sales@mseaudio.com.

[SPECIFICATIONS]

| | SPF-55 | SPF-85 |
|--------------------------------|------------------------------------|----------------------------------|
| Tweeter: | 1" Aluminum Dome | 1" Aluminum Dome |
| Woofer: | 6.5" Polypropylene w/ NBR Surround | 8" Polypropylene w/ NBR Surround |
| Recommended Power (RMS) | 15 - 60 W | 15 - 100 W |
| Frequency Response: | 62 Hz-22 kHz | 38 Hz-22 kHz |
| Sensitivity: | 84 dB | 90 dB |
| Impedance: | 4Ω | 4Ω |
| Crossover Frequency: | 3 kHz | 3 kHz |
| Dimensions: | 15.1" H x 14.1" Diameter | 16.42" H x 14.7" Diameter |
| Weight: | 13 lbs. | 16.7 lbs. |
| Finish Options: | Sandstone and Green | Sandstone and Green |
| Certifications: | UL1480 Listed | UL1480 Listed |

Copyright © 2014 MS Electronics, LLC. All rights reserved. MSE Audio, Phase Technology and PhaseTech are registered trademarks and "Speakers for your Life" is a trademark of MSE Audio, Overland Park, Kansas USA. Phase Technology is part of MSE Audio®. www.phasetech.com.

MSE AUDIO [ **INDUCTION DYNAMICS**  **PHASE TECHNOLOGY**  **Rockinetics**  **Solid Drive**  **SOUNDTUBE ENTERTAINMENT**  **SOUNDSPHERE**]
www.mseaudio.com | 8005 W. 110th Street | Suite 208 | Overland Park, KS 66210 | p:913.663.5600 | f:913.663.3200