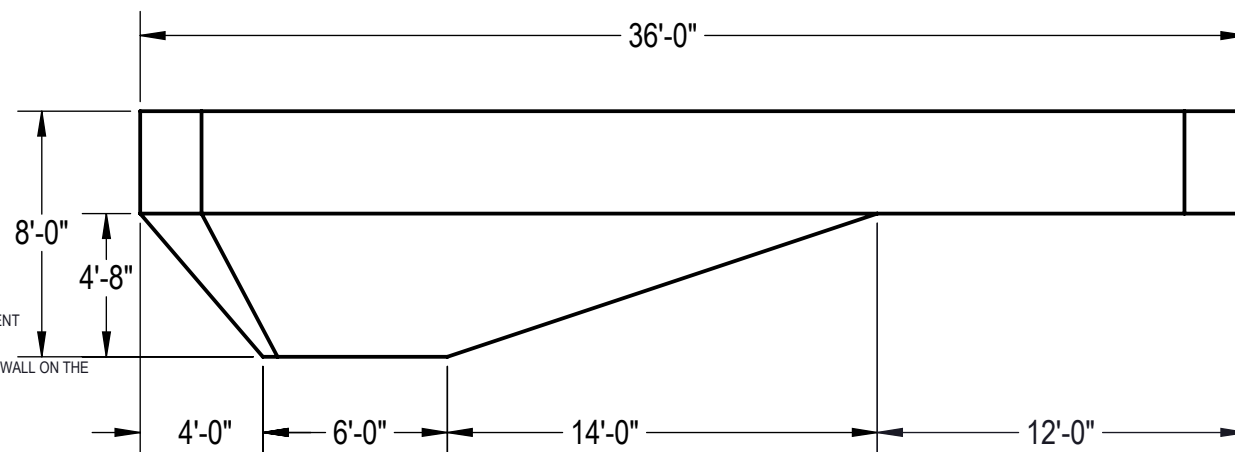


Area: 563.43ft ^2
Perimeter: 100.57ft
Volume = 20662 US gallons



NOTES:

1. THESE ARE FINISHED DIMENSIONS READY FOR THE LINER.
2. DIMENSIONS ARE FROM INSIDE POOL PANELS.
3. ROPE AND FLOAT ASSEMBLY SHOULD BE INSTALLED IN ACCORDANCE WITH CURRENT ANSI/APSP/ICC REGULATIONS
4. HYDRA LINER TRACK FOR STEPS IS INSTALLED WITH THE BARB FACING THE RISER WALL ON THE STEP.

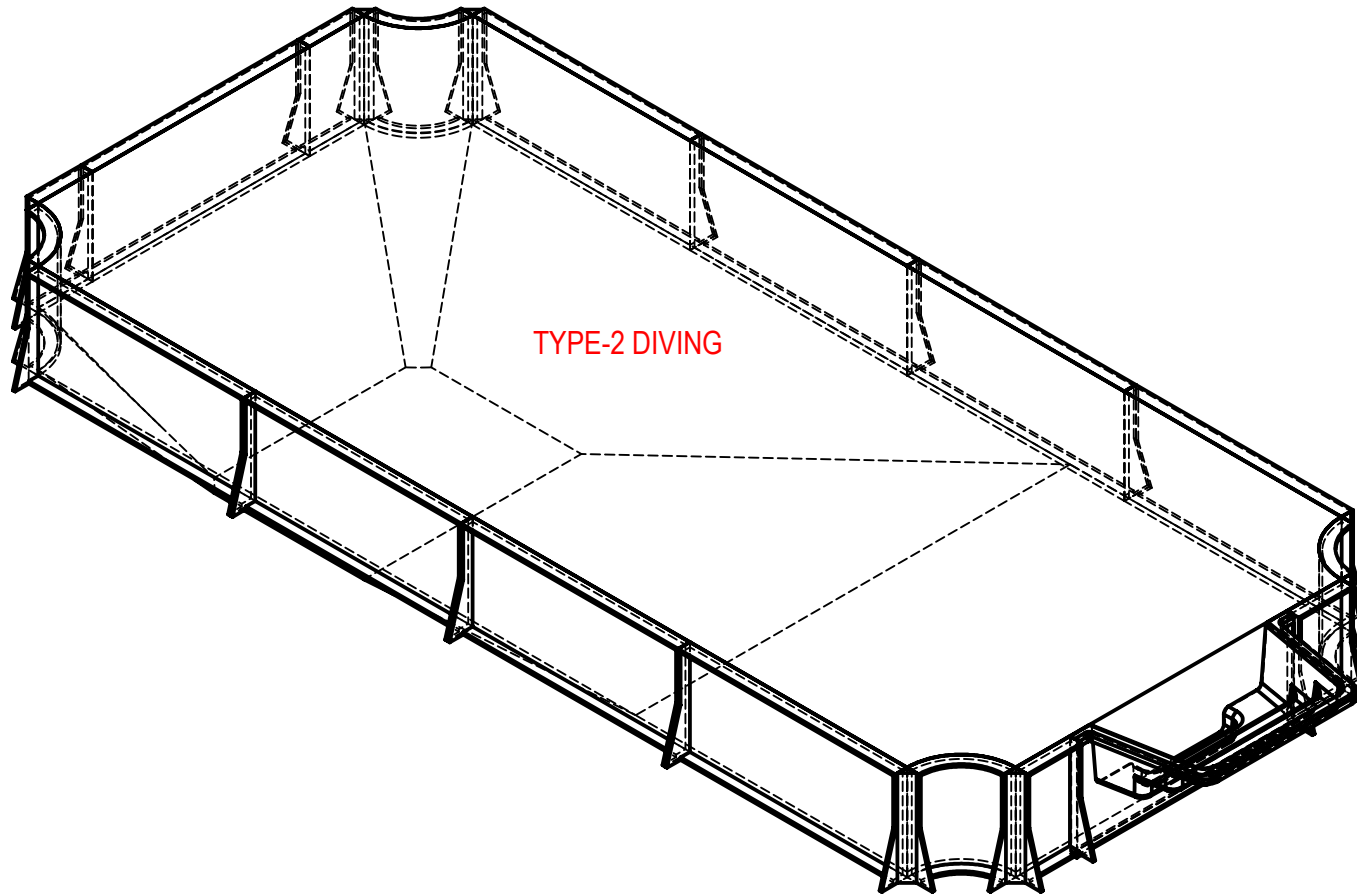
EXCAVATION NOTES:

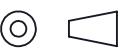
5. ROUGH EXCAVATION SHOULD BE 2" DEEPER IN EACH INSTANCE.
6. SOIL TO HAVE MINIMUM BEARING CAPACITY OF 1500 PSF.
7. LOCATE TOP OF POOL AT LEAST 6" ABOVE THE SURROUNDING LAND ELEVATION.
8. SEE "OVER DIG DETAIL" FOR EXCAVATION AROUND POOL.
9. FILL VOIDS UNDER BASE OF PANELS AND TAMP WELL.
10. BACK FILL WITH NON-EXPANSIVE MATERIAL.
11. FOLLOW ALL CURRENT ANSI / APSP / ICC GUIDELINES FOR RESIDENTIAL POOLS

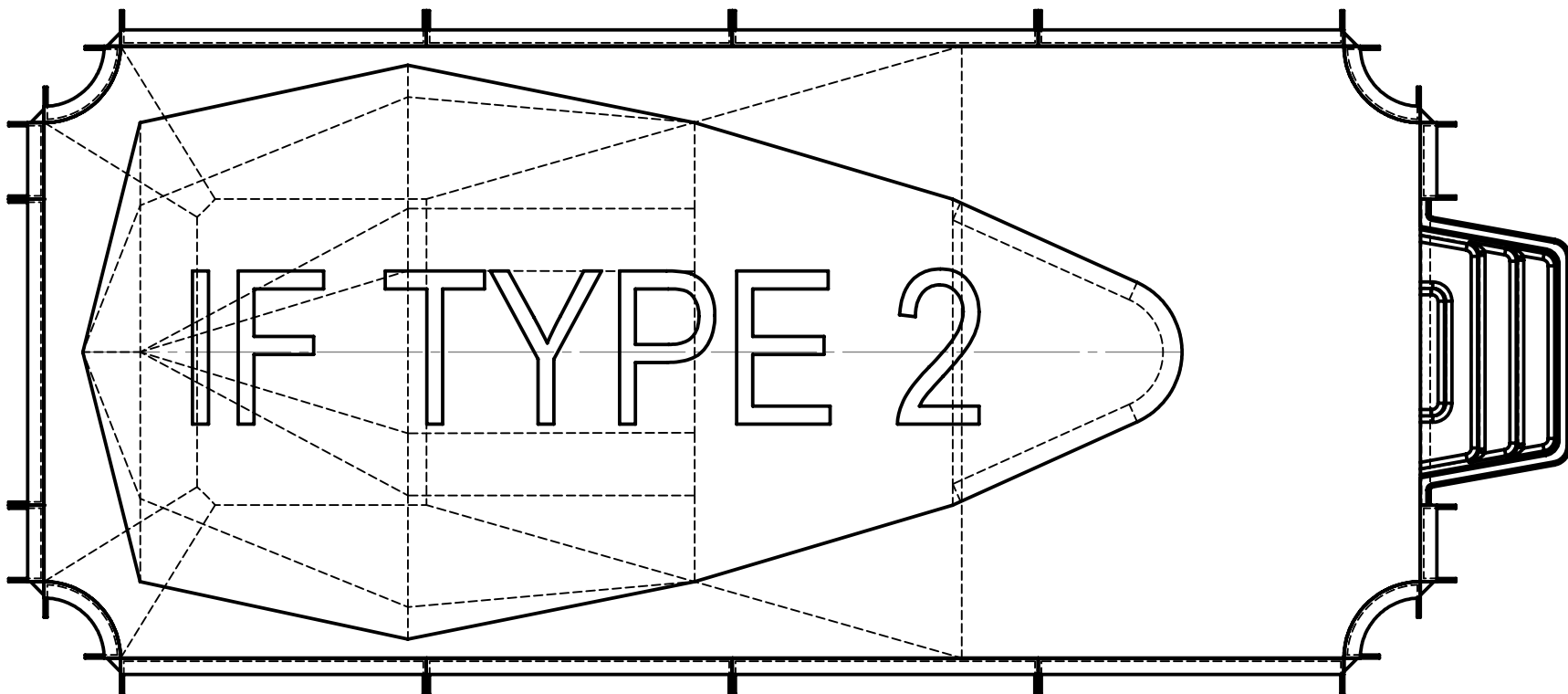
IMPORTANT NOTES:

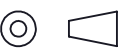
THIS DOCUMENT IS FOR ILLUSTRATIVE PURPOSES ONLY. THE DEALER OR CONTRACTOR WHO SELLS OR INSTALLS YOUR POOL IS AN INDEPENDENT CONTRACTOR AND IS NOT AN AGENT OF THE MANUFACTURER. THE CONSTRUCTION METHODS ILLUSTRATED HERE ARE SUGGESTIONS AND APPLY ONLY TO NORMAL GROUND CONDITIONS. THERE MAY BE ADDITIONAL PRECAUTIONS AND/OR METHODS OF CONSTRUCTION. PROPER INSTALLATION IS THE RESPONSIBILITY OF THE DEALER/BUILDER/CONTRACTOR.

ENGINEERING DRAWING NUMBER: 00023137	WEIGHT: lbs	UNLESS OTHERWISE SPECIFIED DIMENSIONS ARE IN INCHES TOLERANCES DECIMALS: X ± .1 XX ± .01 XXX ± .001 XXXX ± .0005 ANGULAR: X ± 0.5 THIRD ANGLE PROJECTION 	DESIGNED BY: JRITTENHOUSE	CREATION DATE: 4/16/2013	SAMSON STEEL	
	VOLUME: Inch³		DETAILED BY: JRITTENHOUSE	DETAILED DATE: 2/13/2019		
	COLOR: NA		LAST REVISED BY: jrittenhouse	LAST REVISED DATE: 2/13/2019	TITLE: LAYOUT, 16' X 36', HAMPTON, 2' RADIUS REVERSE, 8' DEEP, HS110N, LIGHT, 3- INLET, 1084, 600 SERIES	
	HEAT TREAT: NA		MATERIAL:			
	FINISH: NA				PART NUMBER: 00023137	SCALE: 1:96
	TEXTURE: NA					SHEET: 2 OF 4
						SIZE: A



ENGINEERING DRAWING NUMBER: 00023137	WEIGHT: 284561.4 lbs	UNLESS OTHERWISE SPECIFIED DIMENSIONS ARE IN INCHES TOLERANCES DECIMALS: X ± .1 XX ± .01 XXX ± .001 XXXX ± .0005 ANGULAR: X ± 0.5 THIRD ANGLE PROJECTION 	DESIGNED BY: JRITTENHOUSE	CREATION DATE: 12/11/2014	SAMSON STEEL TITLE: LAYOUT, 16' X 36', HAMPTON, 2' RADIUS REVERSE, 8" DEEP, HS110N, LIGHT, 3- INLET, 1084, 600 SERIES	
	VOLUME: Inch³		DETAILED BY: JRITTENHOUSE	DETAILED DATE: 2/13/2019		
	COLOR:		LAST REVISED BY: jrittenhouse	LAST REVISED DATE: 2/13/2019		
	HEAT TREAT:		MATERIAL:			
	FINISH:		PART NUMBER:		SCALE: 1:96	SIZE: A
	TEXTURE:		00023137		SHEET: 3 OF 4	



ENGINEERING DRAWING NUMBER: 00023137	WEIGHT: 284561.4 lbs	UNLESS OTHERWISE SPECIFIED DIMENSIONS ARE IN INCHES TOLERANCES DECIMALS: X ± .1 XX ± .01 XXX ± .001 XXXX ± .0005 ANGULAR: X ± 0.5 THIRD ANGLE PROJECTION 	DESIGNED BY: JRITTENHOUSE	CREATION DATE: 12/11/2014	SAMSON STEEL		
	VOLUME: Inch³		DETAILED BY: JRITTENHOUSE	DETAILED DATE: 2/13/2019			
	COLOR:		LAST REVISED BY: jrittenhouse	LAST REVISED DATE: 2/13/2019		TITLE: LAYOUT, 16' X 36', HAMPTON, 2' RADIUS REVERSE, 8" DEEP, HS110N, LIGHT, 3- INLET, 1084, 600 SERIES	
	HEAT TREAT:		MATERIAL:				
	FINISH:				PART NUMBER:	SCALE: 1:96	SIZE: A
	TEXTURE:				00023137		SHEET: 4 OF 4