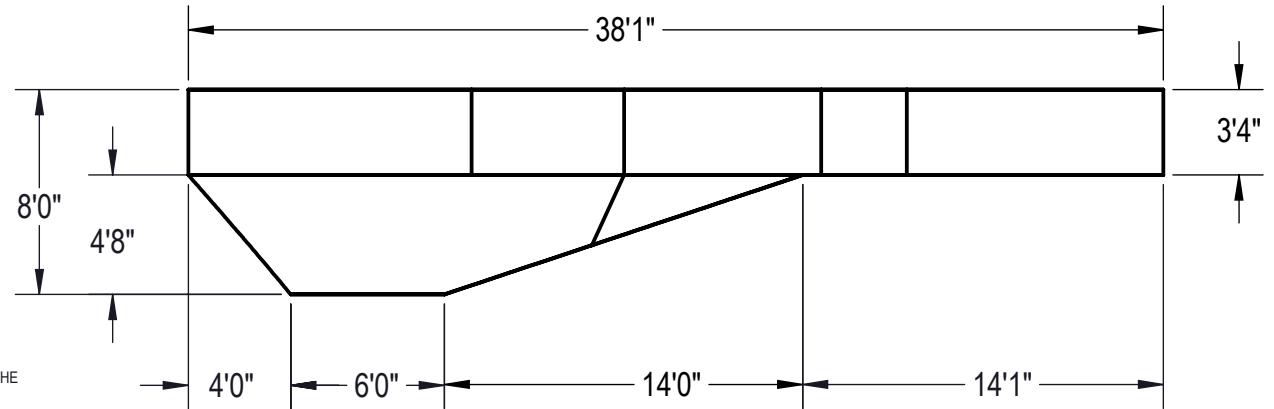


AREA	PERIMETER	VOLUME
SQ. FT.	FT.	U.S. GALLONS
690.87	100.88	25579.315



NOTES:

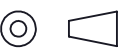
- THESE ARE FINISHED DIMENSIONS READY FOR THE LINER.
- DIMENSIONS ARE FROM INSIDE POOL PANELS.
- ROPE AND FLOAT ASSEMBLY SHOULD BE INSTALLED IN ACCORDANCE WITH CURRENT ANSI/ASPS/ICC REGULATIONS
- HYDRA LINER TRACK FOR STEPS IS INSTALLED WITH THE BARB FACING THE RISER WALL ON THE STEP.

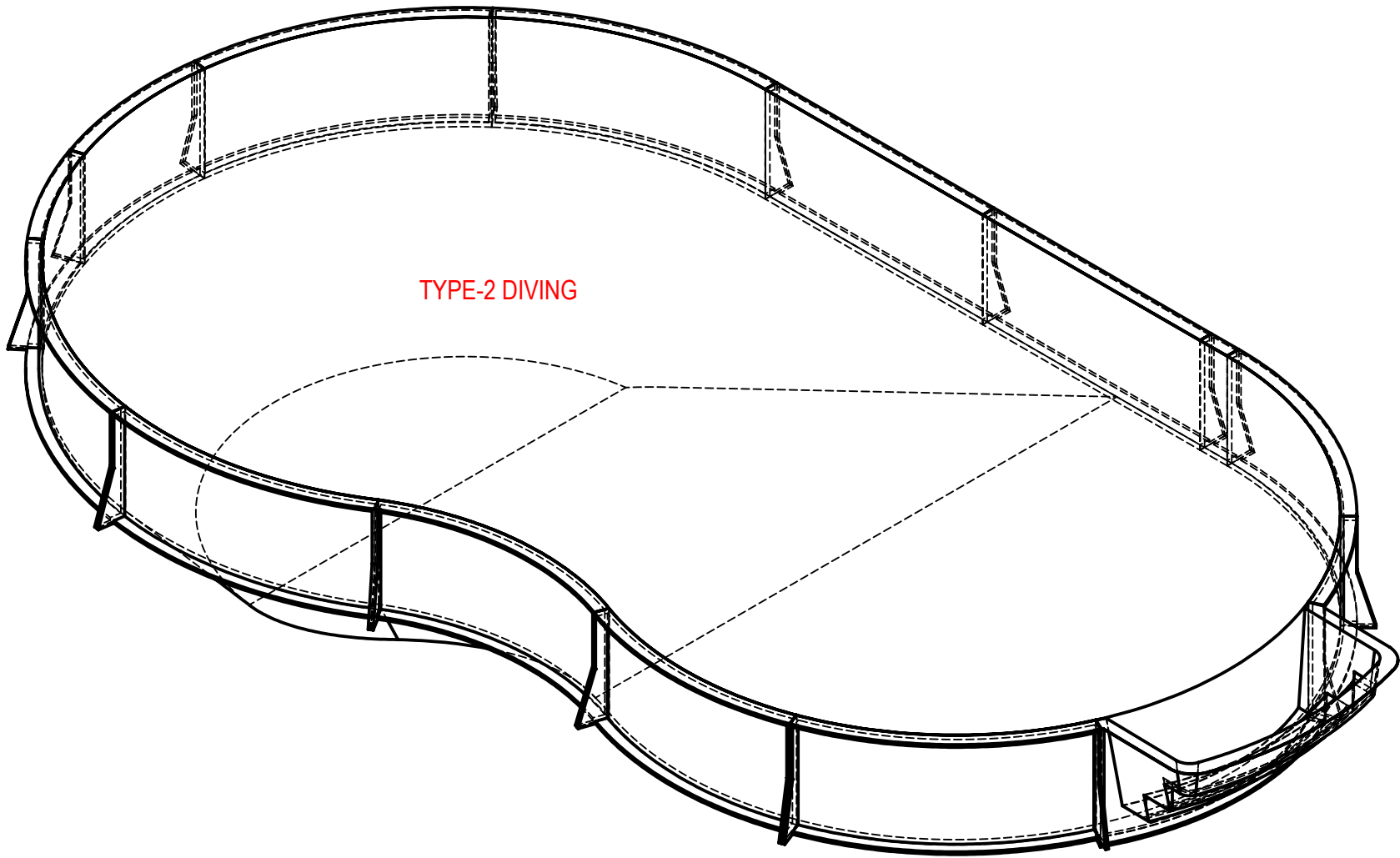
EXCAVATION NOTES:

- ROUGH EXCAVATION SHOULD BE 2" DEEPER IN EACH INSTANCE.
- SOIL TO HAVE MINIMUM BEARING CAPACITY OF 1500 PSF.
- LOCATE TOP OF POOL AT LEAST 6" ABOVE THE SURROUNDING LAND ELEVATION.
- SEE "OVER DIG DETAIL" FOR EXCAVATION AROUND POOL.
- FILL VOIDS UNDER BASE OF PANELS AND TAMP WELL.
- BACK FILL WITH NON-EXPANSIVE MATERIAL.
- FOLLOW ALL CURRENT ANSI / APSP / ICC GUIDELINES FOR RESIDENTIAL POOLS


IMPORTANT NOTES:

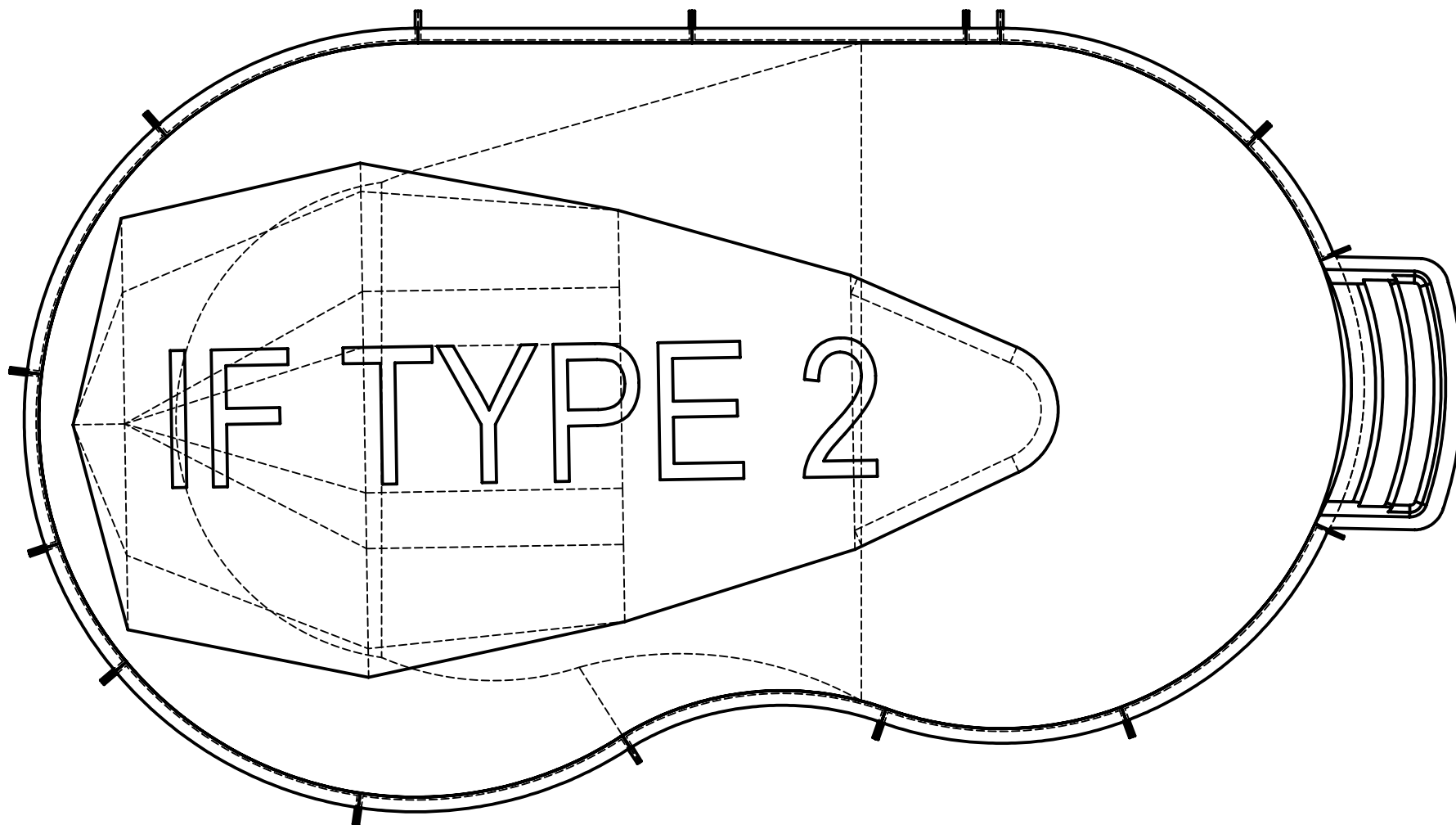
THIS DOCUMENT IS FOR ILLUSTRATIVE PURPOSES ONLY. THE DEALER OR CONTRACTOR WHO SELLS OR INSTALLS YOUR POOL IS AN INDEPENDENT CONTRACTOR AND IS NOT AN AGENT OF THE MANUFACTURER. THE CONSTRUCTION METHODS ILLUSTRATED HERE ARE SUGGESTIONS AND APPLY ONLY TO NORMAL GROUND CONDITIONS. THERE MAY BE ADDITIONAL PRECAUTIONS AND/OR METHODS OF CONSTRUCTION. PROPER INSTALLATION IS THE RESPONSIBILITY OF THE DEALER/BUILDER/CONTRACTOR.


ENGINEERING DRAWING NUMBER: 00028986	WEIGHT: lbs	UNLESS OTHERWISE SPECIFIED DIMENSIONS ARE IN INCHES TOLERANCES DECIMALS: X ± 0.1 XX ± 0.01 XXX ± 0.005 XXXX ± 0.0005 ANGULAR: X ± 0.5 THIRD ANGLE PROJECTION 	DESIGNED BY: ADOLD	CREATION DATE: 7/22/2013	ATLAS STEEL	
	VOLUME: 25579.315 Inch ³		DETAILED BY: adold	DETAILED DATE: 2/19/2020		
	COLOR:		LAST REVISED BY: adold	LAST REVISED DATE: 2/19/2020	TITLE: LAYOUT, 22' X 38' STRAIGHT WALL KIDNEY LEFT, 8' DEEP, HS106N, 3- INLETS, 2- 1084, 700 SERIES	
	HEAT TREAT:		MATERIAL:			
	FINISH:				PART NUMBER: 00028986	SCALE: 1:192 SHEET: 2 OF 5
	TEXTURE:					SIZE: A

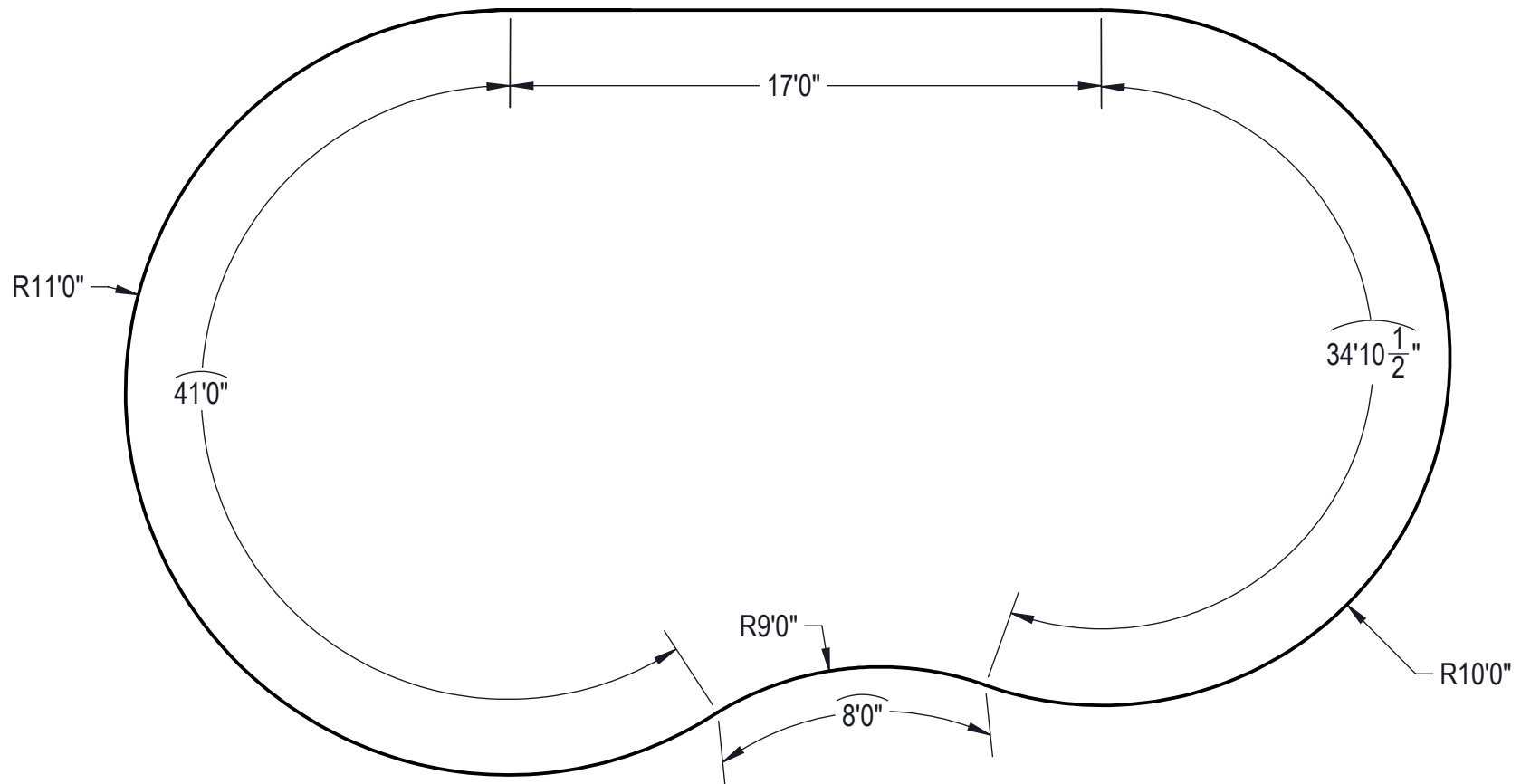


TYPE-2 DIVING

ENGINEERING DRAWING NUMBER: 00028986	WEIGHT:	UNLESS OTHERWISE SPECIFIED DIMENSIONS ARE IN INCHES TOLERANCES DECIMALS: $X \pm 0.1$ $XX \pm 0.01$ $XXX \pm 0.005$ $XXXX \pm 0.0005$ ANGULAR: $X \pm 0.5$ THIRD ANGLE PROJECTION 	DESIGNED BY:	CREATION DATE:	ATLAS STEEL	
	lbs		ADOLD	7/22/2013		
	VOLUME:		DETAILED BY:	DETAILED DATE:	TITLE: LAYOUT, 22' X 38' STRAIGHT WALL KIDNEY LEFT, 8' DEEP, HS106N, 3- INLETS, 2- 1084, 700 SERIES	
	Inch ³		adold	2/19/2020		
	COLOR:		LAST REVISED BY:	LAST REVISED DATE:		
	HEAT TREAT:		adold	2/19/2020		
FINISH:	MATERIAL:		PART NUMBER:	SCALE:	SIZE:	
TEXTURE:			00028986	1:192	A	
				SHEET:		
				3 OF 5		



ENGINEERING DRAWING NUMBER: 00028986	WEIGHT:	UNLESS OTHERWISE SPECIFIED DIMENSIONS ARE IN INCHES TOLERANCES DECIMALS: X ± 0.1 XX ± 0.01 XXX ± 0.005 XXXX ± 0.0005 ANGULAR: X ± 0.5 THIRD ANGLE PROJECTION 	DESIGNED BY:	CREATION DATE:	ATLAS STEEL	
	lbs		ADOLD	7/22/2013		
	VOLUME:		DETAILED BY:	DETAILED DATE:	TITLE: LAYOUT, 22' X 38' STRAIGHT WALL KIDNEY LEFT, 8' DEEP, HS106N, 3- INLETS, 2- 1084, 700 SERIES	
	Inch³		adold	2/19/2020		
	COLOR:		LAST REVISED BY:	LAST REVISED DATE:		
	HEAT TREAT:		adold	2/19/2020		
FINISH:	MATERIAL:		PART NUMBER:	SCALE:	SIZE:	
TEXTURE:			00028986	1:192	A	
				SHEET:		
				4 OF 5		



ENGINEERING DRAWING NUMBER: 00028986	WEIGHT:	UNLESS OTHERWISE SPECIFIED DIMENSIONS ARE IN INCHES TOLERANCES DECIMALS: X ± 0.1 XX ± 0.01 XXX ± 0.005 XXXX ± 0.0005 ANGULAR: X ± 0.5 THIRD ANGLE PROJECTION	DESIGNED BY:	CREATION DATE:	ATLAS STEEL	
	lbs		ADOLD	7/22/2013		
	VOLUME:		DETAILED BY:	DETAILED DATE:	TITLE: LAYOUT, 22' X 38' STRAIGHT WALL KIDNEY LEFT, 8' DEEP, HS106N, 3- INLETS, 2- 1084, 700 SERIES	
	25579.315 Inch ³		adold	2/19/2020		
	COLOR:		LAST REVISED BY:	LAST REVISED DATE:	PART NUMBER: 00028986	
	HEAT TREAT:		adold	2/19/2020		
	FINISH:		MATERIAL:		SCALE: 1:192	SIZE: A
	TEXTURE:				SHEET: 5 OF 5	