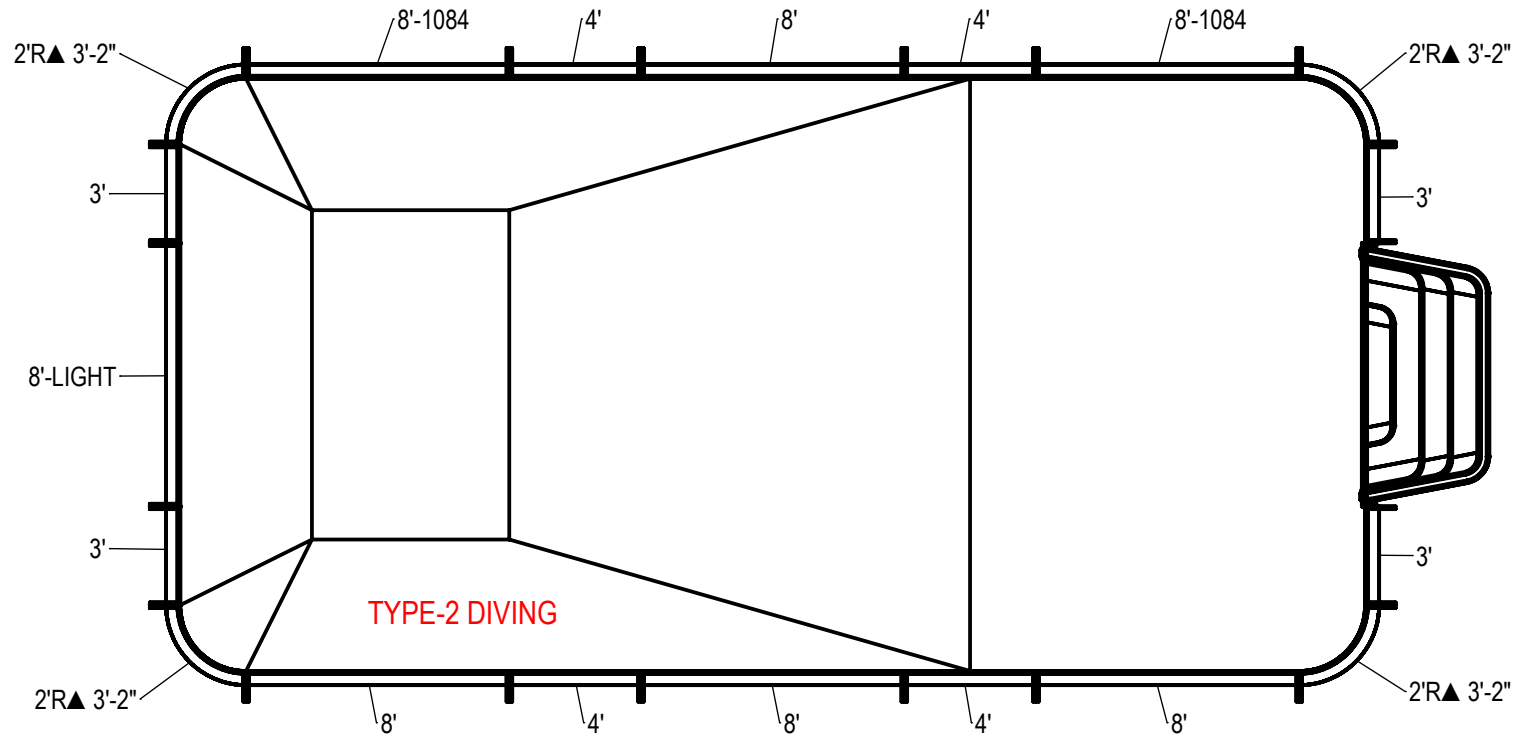


REVISION HISTORY				
REV.	DESCRIPTION	DATE	ECO	BY
A	RELEASED FOR QUOTE	3/6/2020		RMILLER



NOTES:

- THESE ARE FINISHED DIMENSIONS READY FOR THE LINER.
- DIMENSIONS ARE FROM INSIDE POOL PANELS.
- ROPE AND FLOAT ASSEMBLY SHOULD BE INSTALLED IN ACCORDANCE WITH CURRENT ANSI/ASPS/ICC REGULATIONS
- HYDRA LINER TRACK FOR STEPS IS INSTALLED WITH THE BARB FACING THE RISER WALL ON THE STEP.

EXCAVATION NOTES:

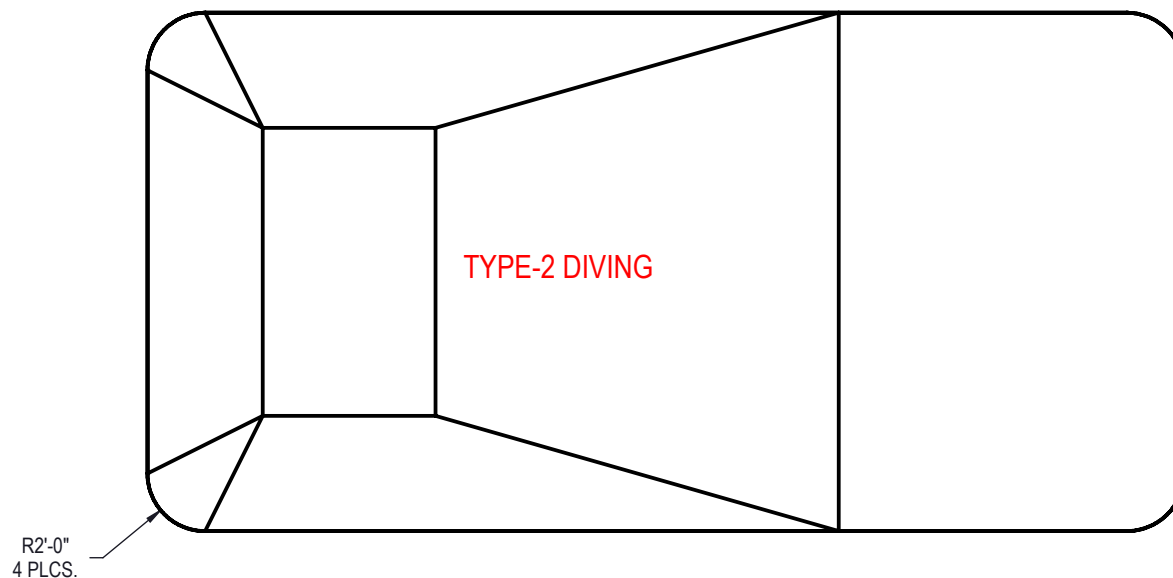
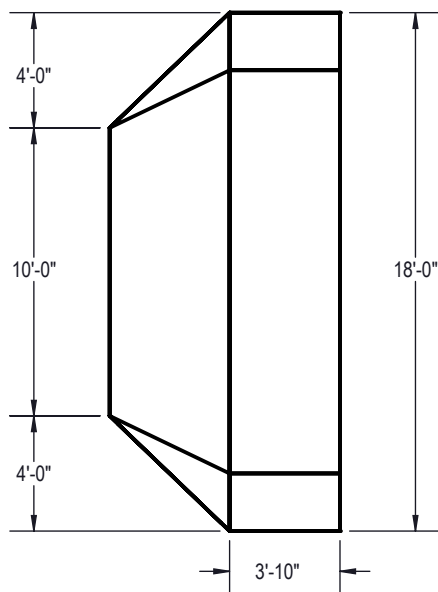
- ROUGH EXCAVATION SHOULD BE 2" DEEPER IN EACH INSTANCE.
- SOIL TO HAVE MINIMUM BEARING CAPACITY OF 1500 PSF.
- LOCATE TOP OF POOL AT LEAST 6" ABOVE THE SURROUNDING LAND ELEVATION.
- SEE "OVER DIG DETAIL" FOR EXCAVATION AROUND POOL.
- FILL VOIDS UNDER BASE OF PANELS AND TAMP WELL.
- BACK FILL WITH NON-EXPANSIVE MATERIAL.
- FOLLOW ALL CURRENT ANSI / APSP / ICC GUIDELINES FOR RESIDENTIAL POOLS

IMPORTANT NOTES:

THIS DOCUMENT IS FOR ILLUSTRATIVE PURPOSES ONLY. THE DEALER OR CONTRACTOR WHO SELLS OR INSTALLS YOUR POOL IS AN INDEPENDENT CONTRACTOR AND IS NOT AN AGENT OF THE MANUFACTURER. THE CONSTRUCTION METHODS ILLUSTRATED HERE ARE SUGGESTIONS AND APPLY ONLY TO NORMAL GROUND CONDITIONS. THERE MAY BE ADDITIONAL PRECAUTIONS AND/OR METHODS OF CONSTRUCTION. PROPER INSTALLATION IS THE RESPONSIBILITY OF THE DEALER/BUILDER/CONTRACTOR.

ITEM	FILE NAME	DESCRIPTION	CUSTOMER DRAWING #	VENDOR PART #	QTY.
1	BOLT, PACK	BOLT, FLANGE, 3/8-16 X 1", PACK (50)	HPS1916	HPS1916	9
2	SBRACE	BRACE, FOLD OVER WITH TURNBUCKLE, STEEL, HPSFOB	HPSFOB	HPSFOB	20
3	PANEL, RADIUS	PANEL, 2' RADIUS, 3-2" LONG, 900 SERIES	HPSFD2R	00013298	4
4	PANEL, STRAIGHT	PANEL, 3' LONG, 900 SERIES	HPSFD103P	00013235	4
5	PANEL, STRAIGHT	PANEL, 4' LONG, 900 SERIES	HPSFD104P	00013236	4
6	PANEL, STRAIGHT	PANEL, 8' LONG, 1084, 900 SERIES	HPSFD10884	00013285	2
7	PANEL, STRAIGHT	PANEL, 8' LONG, 900 SERIES	HPSFD108P	00013240	4
8	PANEL, STRAIGHT	PANEL, 8' LONG, LIGHT, 900 SERIES	HPSFD108L	00013276	1
9	STAKE	STAKE, 14 GA	HPSSTAKE	00003484	20
10	HL18362R8048	STANDARD LINER, 18' X 36' RECTANGLE, 2' RADIUS, 8" DEEP, 48" WALL	HL18362R8048		1
11	HS4810N	STEP, 8", STRAIGHT, 4 TREAD, TWIN SEAT, 48" WALL, BULLNOSE	HS4810N	HS4810N	1

ENGINEERING DRAWING NUMBER: 00029188	WEIGHT: lbs	UNLESS OTHERWISE SPECIFIED DIMENSIONS ARE IN INCHES TOLERANCES DECIMALS: X ± XX ± XXX ± XXXX ± ANGULAR: X ± 0.5 THIRD ANGLE PROJECTION	DESIGNED BY: RMILLER	CREATION DATE: 7/26/2019	SAMSOM STEEL	
	VOLUME: Inch³		DETAILED BY: RMILLER	DETAILED DATE: 3/6/2020		
	COLOR:		LAST REVISED BY: rmiller	LAST REVISED DATE: 3/6/2020		
	HEAT TREAT:		MATERIAL:		TITLE: LAYOUT, 18' X 36', RECTANGLE, 2' RADIUS, 8" DEEP, HS4810N, 1- LIGHT, 2- 1084, 900 SERIES	
	FINISH:		SIZE: A	SHEET: 1 OF 3	SCALE: 1:96	PART NUMBER: 00029188
TEXTURE:						



AREA	PERIMETER	VOLUME
SQ. FT.	FT.	U.S. GALLONS
644.56	104.56	25384.78

NOTES:

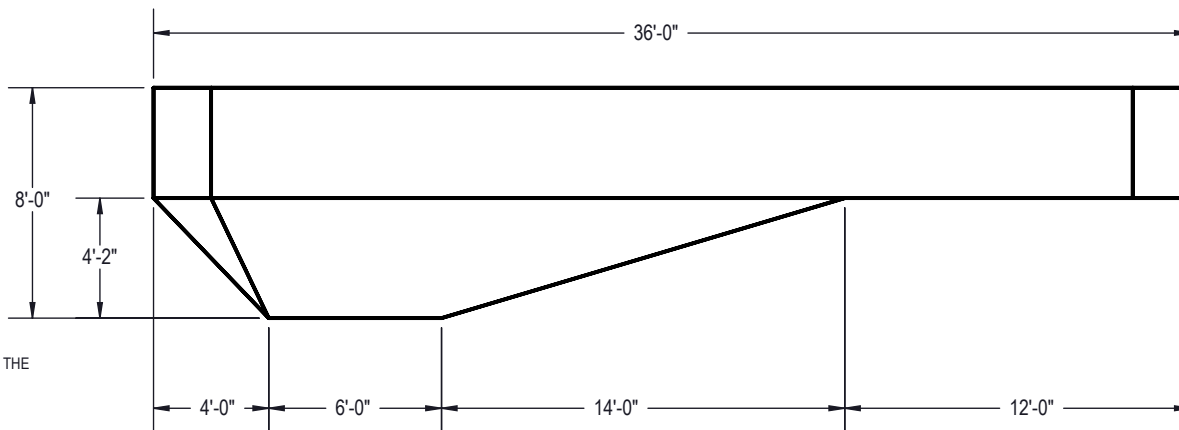
- THESE ARE FINISHED DIMENSIONS READY FOR THE LINER.
- DIMENSIONS ARE FROM INSIDE POOL PANELS.
- ROPE AND FLOAT ASSEMBLY SHOULD BE INSTALLED IN ACCORDANCE WITH CURRENT ANSI/ASPS/ICC REGULATIONS
- HYDRA LINER TRACK FOR STEPS IS INSTALLED WITH THE BARB FACING THE RISER WALL ON THE STEP.

EXCAVATION NOTES:

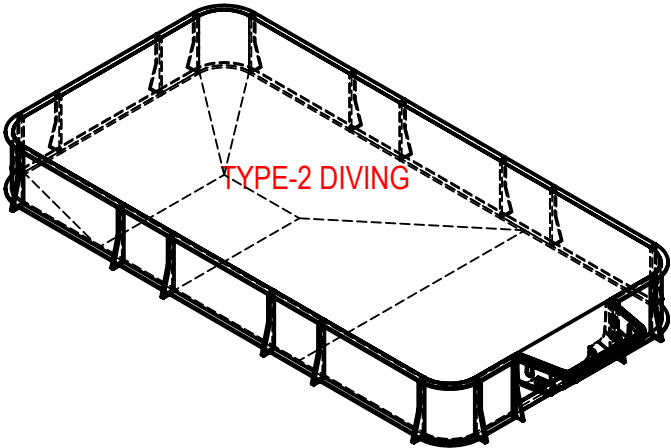
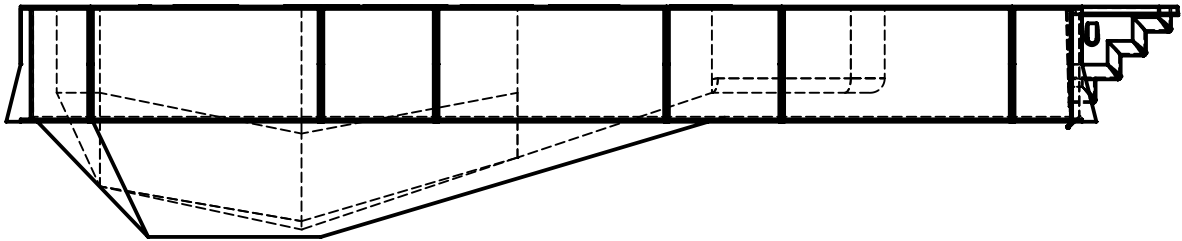
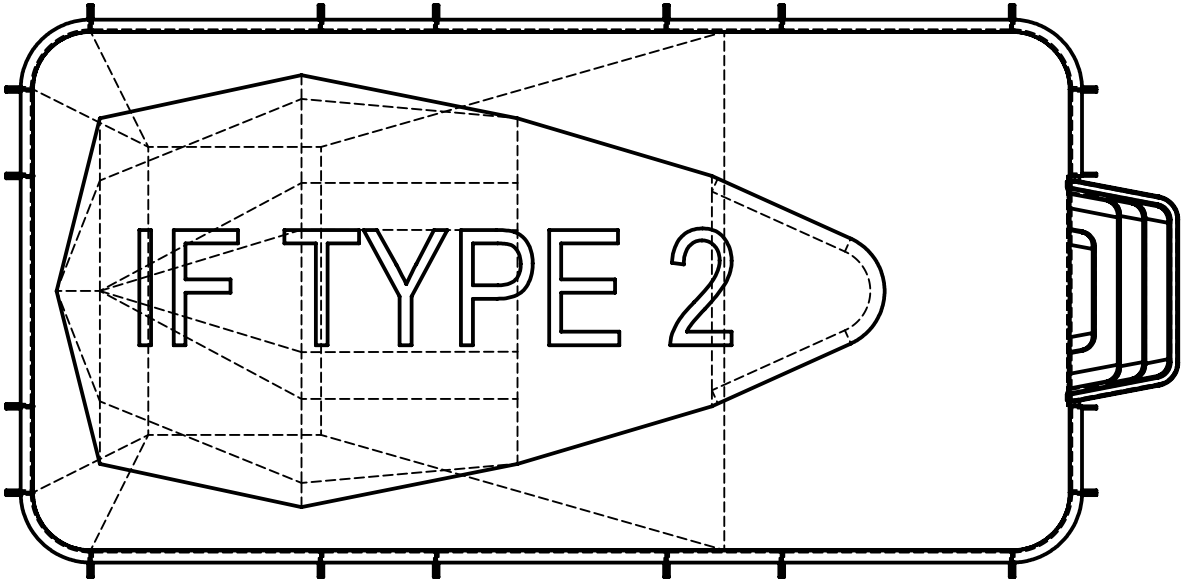
- ROUGH EXCAVATION SHOULD BE 2" DEEPER IN EACH INSTANCE.
- SOIL TO HAVE MINIMUM BEARING CAPACITY OF 1500 PSF.
- LOCATE TOP OF POOL AT LEAST 6" ABOVE THE SURROUNDING LAND ELEVATION.
- SEE "OVER DIG DETAIL" FOR EXCAVATION AROUND POOL.
- FILL VOIDS UNDER BASE OF PANELS AND TAMP WELL.
- BACK FILL WITH NON-EXPANSIVE MATERIAL.
- FOLLOW ALL CURRENT ANSI / APSP / ICC GUIDELINES FOR RESIDENTIAL POOLS


IMPORTANT NOTES:

THIS DOCUMENT IS FOR ILLUSTRATIVE PURPOSES ONLY. THE DEALER OR CONTRACTOR WHO SELLS OR INSTALLS YOUR POOL IS AN INDEPENDENT CONTRACTOR AND IS NOT AN AGENT OF THE MANUFACTURER. THE CONSTRUCTION METHODS ILLUSTRATED HERE ARE SUGGESTIONS AND APPLY ONLY TO NORMAL GROUND CONDITIONS. THERE MAY BE ADDITIONAL PRECAUTIONS AND/OR METHODS OF CONSTRUCTION. PROPER INSTALLATION IS THE RESPONSIBILITY OF THE DEALER/BUILDER/CONTRACTOR.



ENGINEERING DRAWING NUMBER HL18362R8048	WEIGHT: lbs	UNLESS OTHERWISE SPECIFIED DIMENSIONS ARE IN INCHES TOLERANCES DECIMALS: X ± XX ± XXX ± XXXX ± ANGULAR: X ± 0.5 THIRD ANGLE PROJECTION 	DESIGNED BY:	CREATION DATE: 4/3/2013	HYDRA POOLS		
	VOLUME: 25384.78 Inch³		DETAILED BY: RMILLER	DETAILED DATE: 3/6/2020			
	COLOR:		LAST REVISED BY: rmiller	LAST REVISED DATE: 3/6/2020	TITLE: STANDARD LINER, 18' X 36' RECTANGLE, 2' RADIUS, 8' DEEP, 48" WALL		
	HEAT TREAT:		MATERIAL:				
	FINISH:		SIZE: A	SHEET: 2 OF 3	SCALE: 1:96	PART NUMBER: HL18362R8048	REV
TEXTURE:							



ENGINEERING DRAWING NUMBER: 00029188	WEIGHT: lbs	UNLESS OTHERWISE SPECIFIED DIMENSIONS ARE IN INCHES TOLERANCES DECIMALS: X ± XX ± XXX ± XXXX ± ANGULAR: X ± 0.5 THIRD ANGLE PROJECTION 	DESIGNED BY: RMILLER	CREATION DATE: 7/26/2019		SAMSON STEEL				
	VOLUME: Inch³		DETAILED BY: RMILLER	DETAILED DATE: 3/6/2020						
	COLOR:		LAST REVISED BY: rmiller	LAST REVISED DATE: 3/6/2020		TITLE: LAYOUT, 18' X 36', RECTANGLE, 2' RADIUS, 8' DEEP, HS4810N, 1- LIGHT, 2- 1084, 900 SERIES				
	HEAT TREAT:		MATERIAL:							
	FINISH:		SIZE:		SHEET: 3 OF 3	SCALE: 1:96	PART NUMBER: 00029188		REV	A
	TEXTURE:		A							