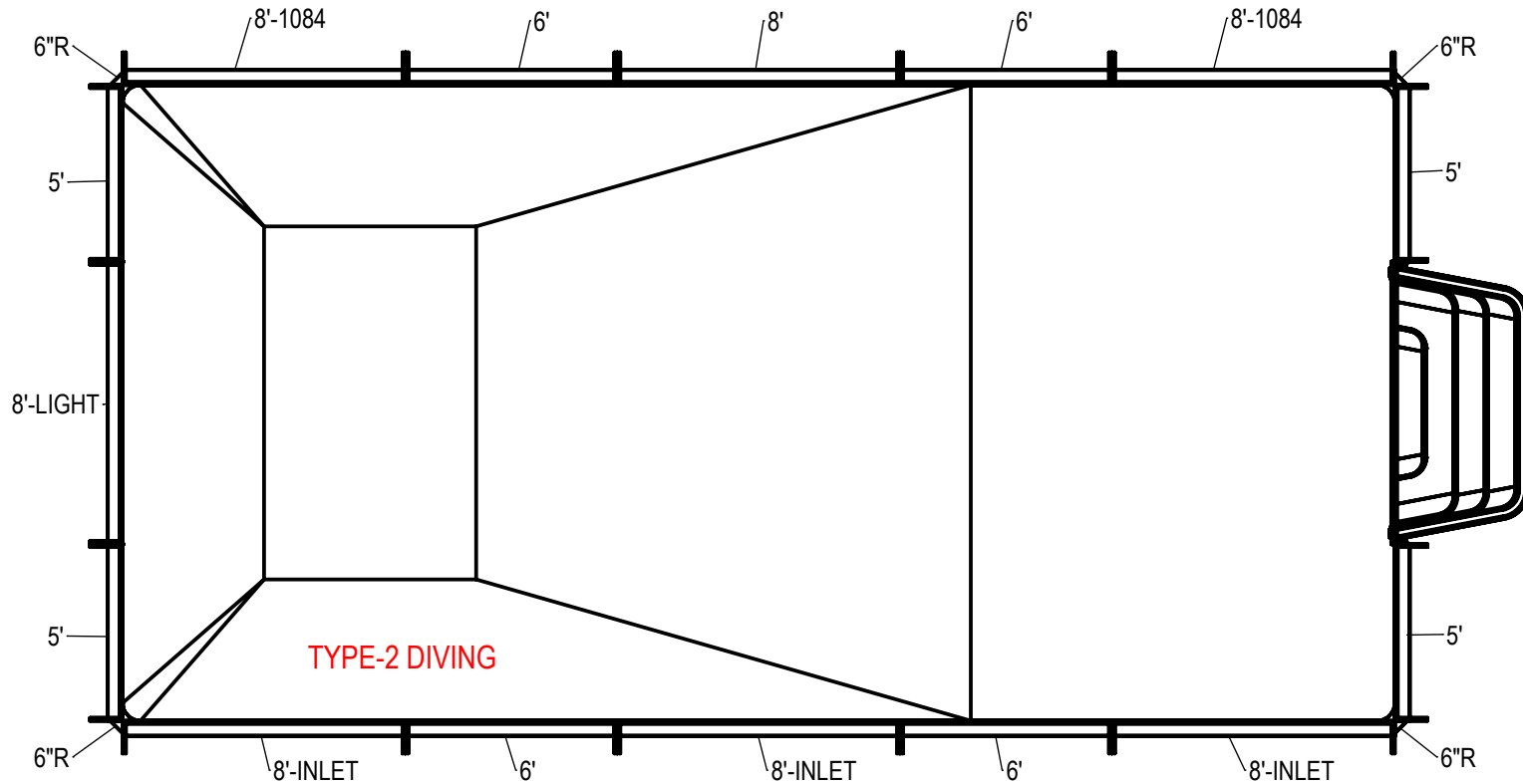


REVISION HISTORY				
REV.	DESCRIPTION	DATE	ECO	BY
A	RELEASED FOR QUOTE	3/6/2020		RMILLER



NOTES:

- THESE ARE FINISHED DIMENSIONS READY FOR THE LINER.
- DIMENSIONS ARE FROM INSIDE POOL PANELS.
- ROPE AND FLOAT ASSEMBLY SHOULD BE INSTALLED IN ACCORDANCE WITH CURRENT ANSI/ASPS/ICC REGULATIONS
- HYDRA LINER TRACK FOR STEPS IS INSTALLED WITH THE BARB FACING THE RISER WALL ON THE STEP.

EXCAVATION NOTES:

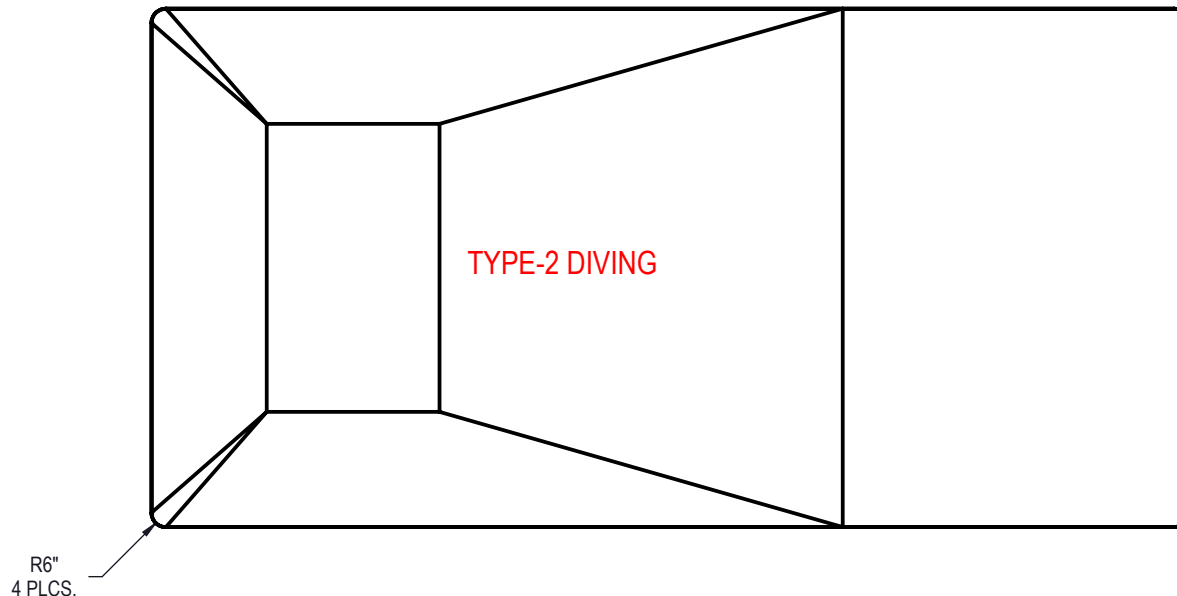
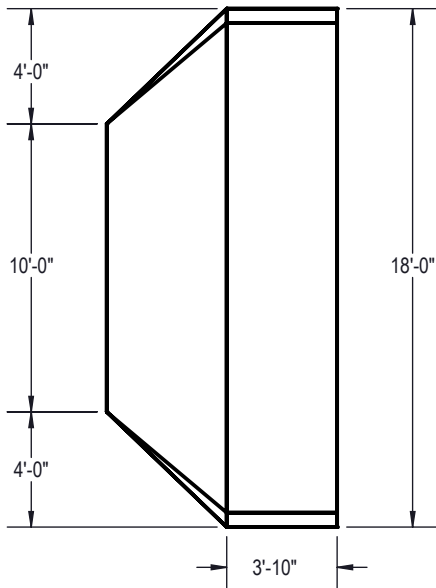
- ROUGH EXCAVATION SHOULD BE 2" DEEPER IN EACH INSTANCE.
- SOIL TO HAVE MINIMUM BEARING CAPACITY OF 1500 PSF.
- LOCATE TOP OF POOL AT LEAST 6" ABOVE THE SURROUNDING LAND ELEVATION.
- SEE "OVER DIG DETAIL" FOR EXCAVATION AROUND POOL.
- FILL VOIDS UNDER BASE OF PANELS AND TAMP WELL.
- BACK FILL WITH NON-EXPANSIVE MATERIAL.
- FOLLOW ALL CURRENT ANSI / APSP / ICC GUIDELINES FOR RESIDENTIAL POOLS

IMPORTANT NOTES:

THIS DOCUMENT IS FOR ILLUSTRATIVE PURPOSES ONLY. THE DEALER OR CONTRACTOR WHO SELLS OR INSTALLS YOUR POOL IS AN INDEPENDENT CONTRACTOR AND IS NOT AN AGENT OF THE MANUFACTURER. THE CONSTRUCTION METHODS ILLUSTRATED HERE ARE SUGGESTIONS AND APPLY ONLY TO NORMAL GROUND CONDITIONS. THERE MAY BE ADDITIONAL PRECAUTIONS AND/OR METHODS OF CONSTRUCTION. PROPER INSTALLATION IS THE RESPONSIBILITY OF THE DEALER/BUILDER/CONTRACTOR.

ITEM	FILE NAME	DESCRIPTION	CUSTOMER DRAWING #	VENDOR PART #	QTY.
1	BOLT, PACK	BOLT, FLANGE, 3/8-16 X 1", PACK (50)	HPS1916	HPS1916	9
2	SBRACE	BRACE, FOLD OVER WITH TURNBUCKLE, STEEL, HPSFOB	HPSFOB	HPSFOB	20
3	PANEL, STRAIGHT	PANEL, 5' LONG, 900 SERIES	HPSFD105P	00013237	4
4	PANEL, STRAIGHT	PANEL, 6' LONG, 900 SERIES	HPSFD106P	00013238	4
5	PANEL, STRAIGHT	PANEL, 8' LONG, 1084, 900 SERIES	HPSFD10884	00013285	2
6	PANEL, STRAIGHT	PANEL, 8' LONG, 900 SERIES	HPSFD108P	00013240	1
7	PANEL, STRAIGHT	PANEL, 8' LONG, INLET, 900 SERIES	HPSFD108I	00013263	3
8	PANEL, STRAIGHT	PANEL, 8' LONG, LIGHT, 900 SERIES	HPSFD108L	00013276	1
9	STAKE	STAKE , 14 GA	HPSTAKE	00003484	20
10	HL18366R8048	STANDARD LINER, 18' X 36' RECTANGLE, 6" RADIUS, 8' DEEP, 48" WALL	HL18366R8048		1
11	HS4810N	STEP, 8', STRAIGHT, 4 TREAD, TWIN SEAT, 48" WALL, BULLNOSE	HS4810N	HS4810N	1
12	PANEL, WEDGE	WEDGE, 2 1/2" X 2 1/2" X 90° 900 ASSEMBLY	HPSFD6CA	00012860	4

ENGINEERING DRAWING NUMBER: 00029187	WEIGHT: lbs	UNLESS OTHERWISE SPECIFIED DIMENSIONS ARE IN INCHES TOLERANCES DECIMALS: X ± XX ± XXX ± XXXX ± ANGULAR: X ± 0.5 THIRD ANGLE PROJECTION 	DESIGNED BY: RMILLER	CREATION DATE: 7/26/2019	HYDRA POOLS/ATLAS STEEL/SAMSON STEEL TITLE: LAYOUT, 18' X 36', RECTANGLE, 6" RADIUS, 8' DEEP, HS4810N, 1- LIGHT, 3- INLETS, 2- 1084, 900 SERIES		
	VOLUME: Inch³		DETAILED BY: RMILLER	DETAILED DATE: 3/6/2020			
	COLOR:		LAST REVISED BY: rmiller	LAST REVISED DATE: 3/6/2020			
	HEAT TREAT:		MATERIAL:		PART NUMBER:		REV A
	FINISH:		SIZE: A		SHEET: 1 OF 3	SCALE: 1:96	
	TEXTURE:		00029187		00029187		



AREA	PERIMETER	VOLUME
SQ. FT.	FT.	U.S. GALLONS
647.79	107.14	25493.82

NOTES:

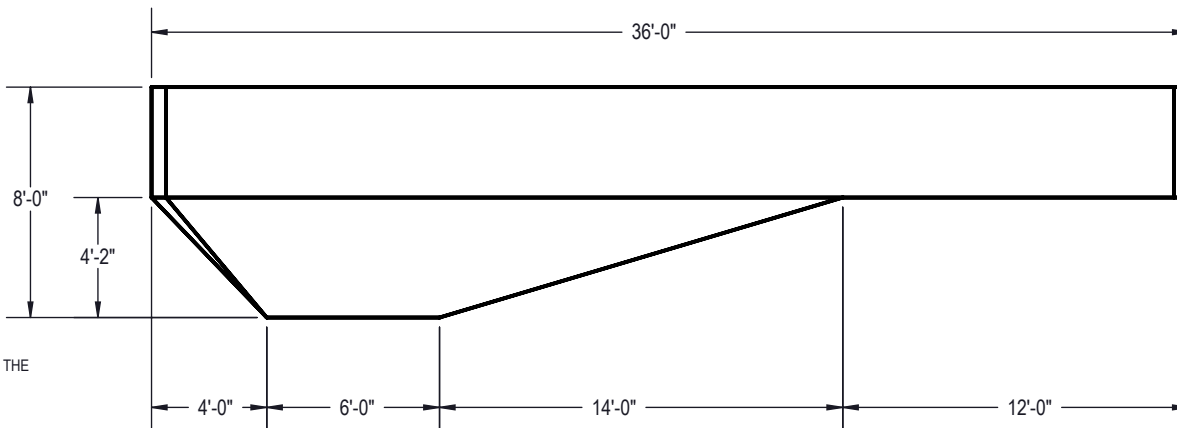
- THESE ARE FINISHED DIMENSIONS READY FOR THE LINER.
- DIMENSIONS ARE FROM INSIDE POOL PANELS.
- ROPE AND FLOAT ASSEMBLY SHOULD BE INSTALLED IN ACCORDANCE WITH CURRENT ANSI/APSP/ICC REGULATIONS
- HYDRA LINER TRACK FOR STEPS IS INSTALLED WITH THE BARB FACING THE RISER WALL ON THE STEP.

EXCAVATION NOTES:

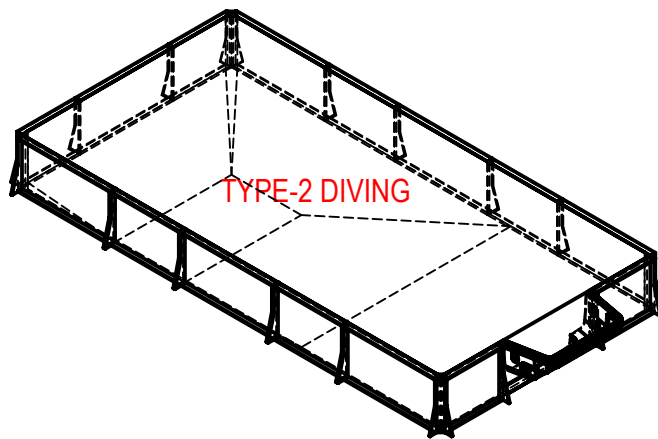
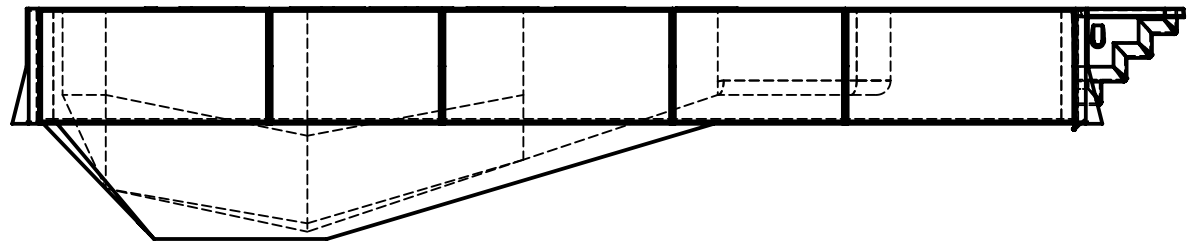
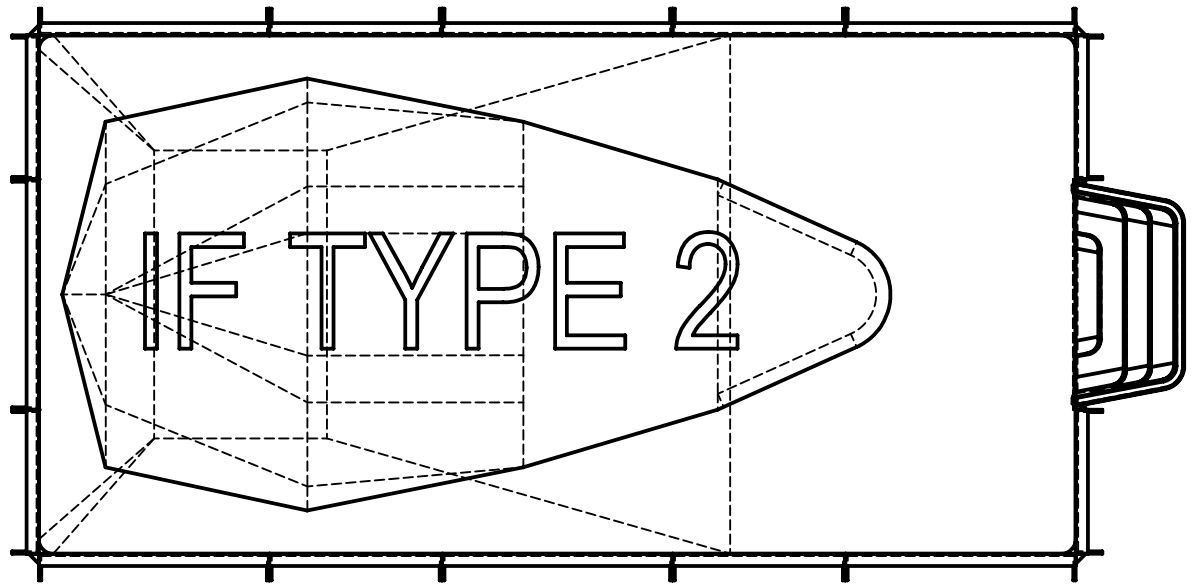
- ROUGH EXCAVATION SHOULD BE 2" DEEPER IN EACH INSTANCE.
- SOIL TO HAVE MINIMUM BEARING CAPACITY OF 1500 PSF.
- LOCATE TOP OF POOL AT LEAST 6" ABOVE THE SURROUNDING LAND ELEVATION.
- SEE "OVER DIG DETAIL" FOR EXCAVATION AROUND POOL.
- FILL VOIDS UNDER BASE OF PANELS AND TAMP WELL.
- BACK FILL WITH NON-EXPANSIVE MATERIAL.
- FOLLOW ALL CURRENT ANSI / APSP / ICC GUIDELINES FOR RESIDENTIAL POOLS


IMPORTANT NOTES:

THIS DOCUMENT IS FOR ILLUSTRATIVE PURPOSES ONLY. THE DEALER OR CONTRACTOR WHO SELLS OR INSTALLS YOUR POOL IS AN INDEPENDENT CONTRACTOR AND IS NOT AN AGENT OF THE MANUFACTURER. THE CONSTRUCTION METHODS ILLUSTRATED HERE ARE SUGGESTIONS AND APPLY ONLY TO NORMAL GROUND CONDITIONS. THERE MAY BE ADDITIONAL PRECAUTIONS AND/OR METHODS OF CONSTRUCTION. PROPER INSTALLATION IS THE RESPONSIBILITY OF THE DEALER/BUILDER/CONTRACTOR.



ENGINEERING DRAWING NUMBER HL18366R8048	WEIGHT: lbs VOLUME: 25493.82 Inch ³	UNLESS OTHERWISE SPECIFIED DIMENSIONS ARE IN INCHES TOLERANCES DECIMALS: X ± XX ± XXX ± XXXX ± ANGULAR: X ± 0.5 THIRD ANGLE PROJECTION 	DESIGNED BY:	CREATION DATE:	HYDRA POOLS			
	COLOR:		DETAILED BY:	DETAILED DATE:				
	HEAT TREAT:		LAST REVISED BY:	LAST REVISED DATE:	TITLE: STANDARD LINER, 18' X 36' RECTANGLE, 6" RADIUS, 8" DEEP, 48" WALL			
	FINISH:		MATERIAL:					
TEXTURE:			SIZE:	SHEET:	SCALE:	PART NUMBER:	REV	
			A	2 OF 3	1:96	HL18366R8048	A	



ENGINEERING DRAWING NUMBER 00029187	WEIGHT: lbs	UNLESS OTHERWISE SPECIFIED DIMENSIONS ARE IN INCHES TOLERANCES DECIMALS: X ± XX ± XXX ± XXXX ± ANGULAR: X ± 0.5 THIRD ANGLE PROJECTION 	DESIGNED BY: RMILLER	CREATION DATE: 7/26/2019	HYDRA POOLS/ATLAS STEEL/SAMSON STEEL								
	VOLUME: Inch³		DETAILED BY: RMILLER	DETAILED DATE: 3/6/2020	TITLE: LAYOUT, 18' X 36', RECTANGLE, 6" RADIUS, 8' DEEP, HS4810N, 1- LIGHT, 3- INLETS, 2- 1084, 900 SERIES								
	COLOR:		LAST REVISED BY: rmiller	LAST REVISED DATE: 3/6/2020									
	HEAT TREAT:		MATERIAL:										
	FINISH:		SIZE:			SHEET:		SCALE:		PART NUMBER:		REV	A
	TEXTURE:		A			3 OF 3		1:128		00029187			