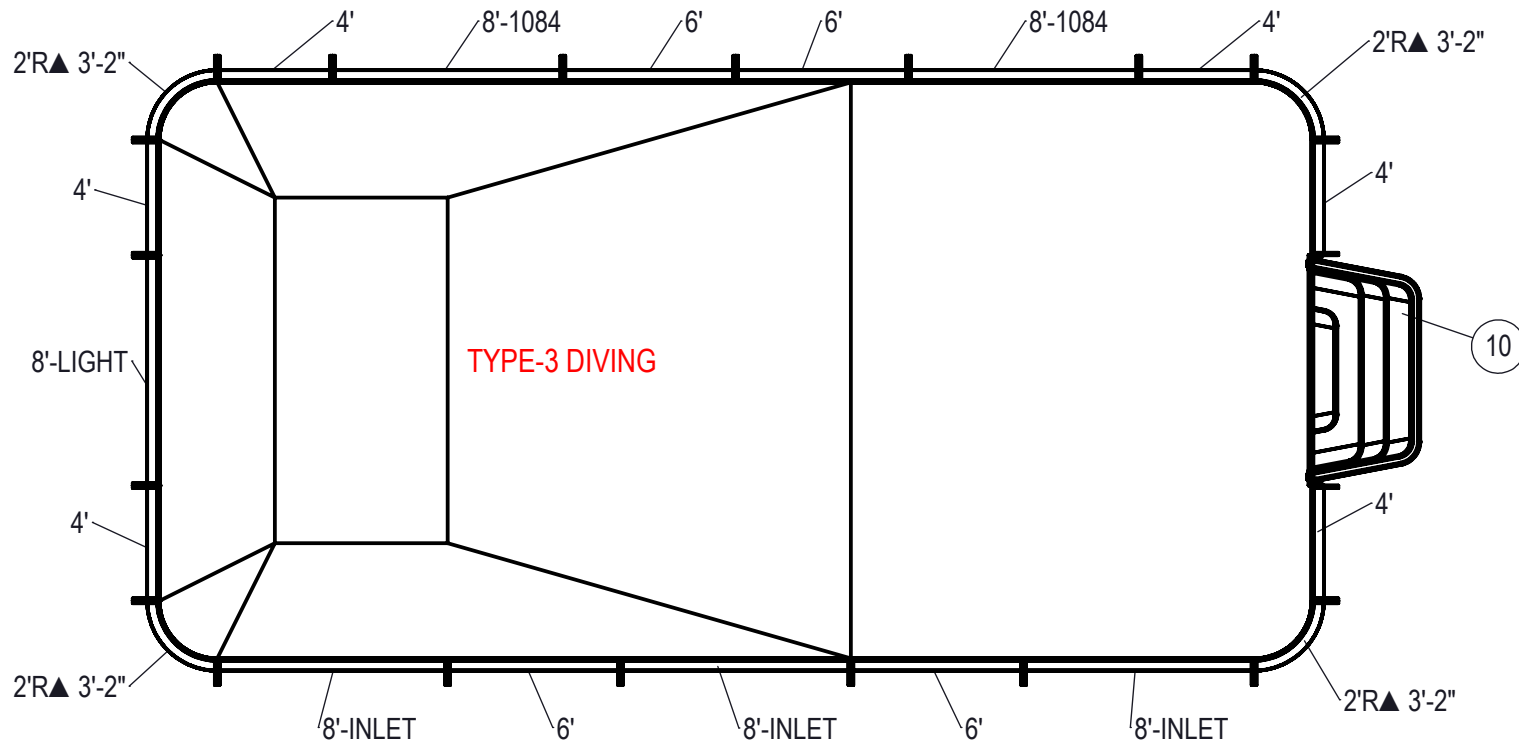


REVISION HISTORY				
REV.	DESCRIPTION	DATE	ECO	BY
A	RELEASED FOR QUOTE	03/06/20		MWILLIAMS



NOTES:

- THESE ARE FINISHED DIMENSIONS READY FOR THE LINER.
- DIMENSIONS ARE FROM INSIDE POOL PANELS.
- ROPE AND FLOAT ASSEMBLY SHOULD BE INSTALLED IN ACCORDANCE WITH CURRENT ANSI/ASPS/ICC REGULATIONS
- HYDRA LINER TRACK FOR STEPS IS INSTALLED WITH THE BARB FACING THE RISER WALL ON THE STEP.

EXCAVATION NOTES:

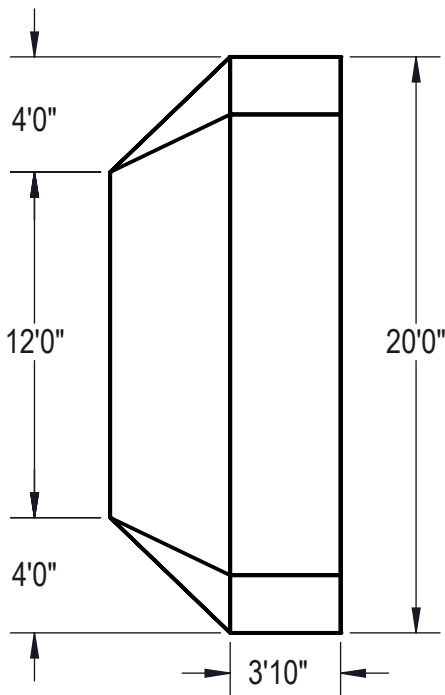
- ROUGH EXCAVATION SHOULD BE 2" DEEPER IN EACH INSTANCE.
- SOIL TO HAVE MINIMUM BEARING CAPACITY OF 1500 PSF.
- LOCATE TOP OF POOL AT LEAST 6" ABOVE THE SURROUNDING LAND ELEVATION.
- SEE "OVER DIG DETAIL" FOR EXCAVATION AROUND POOL.
- FILL VOIDS UNDER BASE OF PANELS AND TAMP WELL.
- BACK FILL WITH NON-EXPANSIVE MATERIAL.
- FOLLOW ALL CURRENT ANSI / APSP / ICC GUIDELINES FOR RESIDENTIAL POOLS

IMPORTANT NOTES:

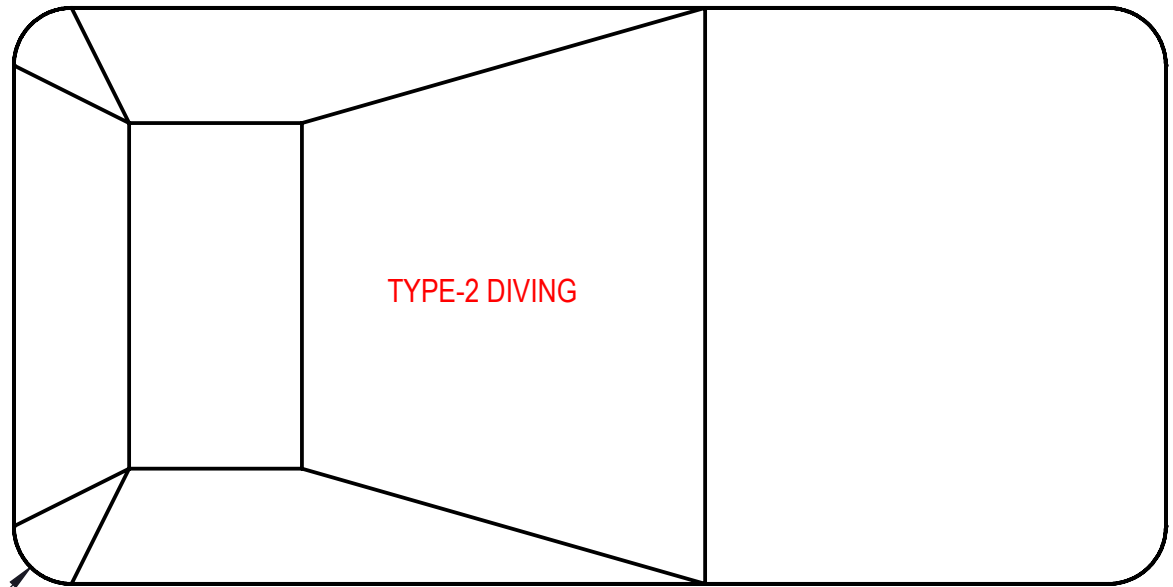
THIS DOCUMENT IS FOR ILLUSTRATIVE PURPOSES ONLY. THE DEALER OR CONTRACTOR WHO SELLS OR INSTALLS YOUR POOL IS AN INDEPENDENT CONTRACTOR AND IS NOT AN AGENT OF THE MANUFACTURER. THE CONSTRUCTION METHODS ILLUSTRATED HERE ARE SUGGESTIONS AND APPLY ONLY TO NORMAL GROUND CONDITIONS. THERE MAY BE ADDITIONAL PRECAUTIONS AND/OR METHODS OF CONSTRUCTION. PROPER INSTALLATION IS THE RESPONSIBILITY OF THE DEALER/BUILDER/CONTRACTOR.

ITEM	FILE NAME	DESCRIPTION	CUSTOMER DRAWING #	VENDOR PART #	QTY.
1	BOLT, PACK	BOLT, FLANGE, 3/8-16 X 1", PACK (50)	HPS1916	HPS1916	9
2	SBRACE	BRACE, FOLD OVER WITH TURNBUCKLE, STEEL, 48", HPSFFOB	HPSFFOB	00013156	21
3	PANEL, RADIUS	PANEL, 2' RADIUS, 3-2" LONG, 900 SERIES	HPSFD2R	00013298	4
4	PANEL, STRAIGHT	PANEL, 4' LONG, 900 SERIES	HPSFD104P	00013236	6
5	PANEL, STRAIGHT	PANEL, 6' LONG, 900 SERIES	HPSFD106P	00013238	4
6	PANEL, STRAIGHT	PANEL, 8' LONG, 1084, 900 SERIES	HPSFD10884	00013285	2
7	PANEL, STRAIGHT	PANEL, 8' LONG, INLET, 900 SERIES	HPSFD108I	00013263	3
8	PANEL, STRAIGHT	PANEL, 8' LONG, LIGHT, 900 SERIES	HPSFD108L	00013276	1
9	STAKE	STAKE, 14 GA	HPSSTAKE	00003484	21
10	HS4810N	STEP, 8", STRAIGHT, 4 TREAD, TWIN SEAT, 48" WALL, BULL NOSE	HS4810N	HS4810N	1
11	HL20402R8048	STANDARD LINER, 20' X 40' RECTANGLE, 2' RADIUS, 8" DEEP, 48" WALL	HL20402R8048		1

ENGINEERING DRAWING NUMBER: 00029185	WEIGHT: lbs	UNLESS OTHERWISE SPECIFIED DIMENSIONS ARE IN INCHES TOLERANCES DECIMALS: X ± XX ± XXX ± XXXX ± ANGULAR: X ± 0.5 THIRD ANGLE PROJECTION 	DESIGNED BY: MWILLIAMS	CREATION DATE: 05/14/13	SAMSON STEEL		
	VOLUME: Inch³		DETAILED BY: MWILLIAMS	DETAILED DATE: 03/06/20			
	COLOR:		LAST REVISED BY: mwiliams	LAST REVISED DATE: 03/06/20	TITLE: LAYOUT, 20' X 40', RECTANGLE, 2' RADIUS, 8" DEEP, HS4810N, LIGHTS, 3- INLETS, 2- 1084, 900 SERIES		
	HEAT TREAT:		MATERIAL:				
	FINISH:		SIZE: A				
TEXTURE:							



R2'0"
4 PLCS.



AREA	PERIMETER	VOLUME
SQ. FT.	FT.	U.S. GALLONS
796.58	116.57	30678.50

NOTES:

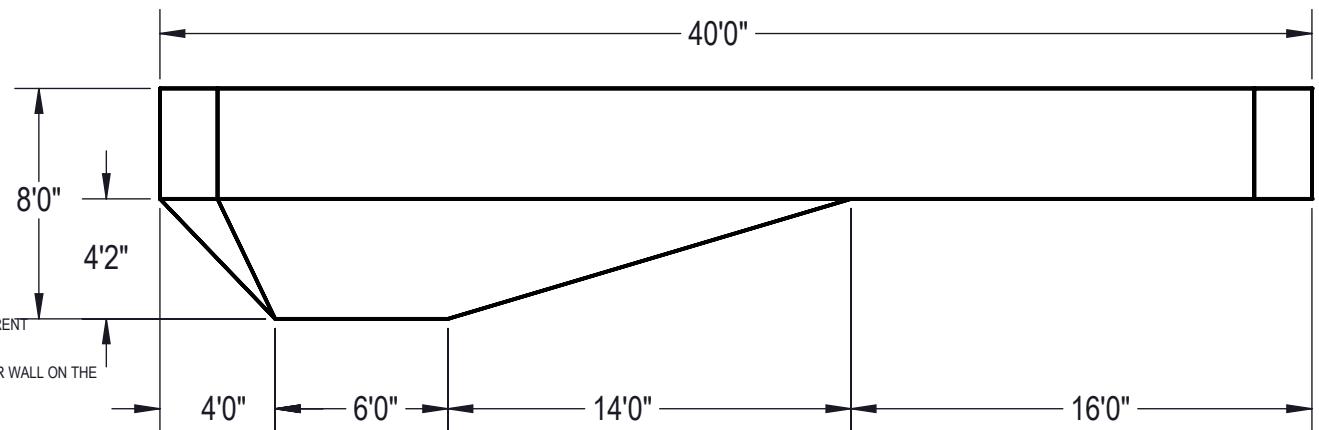
1. THESE ARE FINISHED DIMENSIONS READY FOR THE LINER.
2. DIMENSIONS ARE FROM INSIDE POOL PANELS.
3. ROPE AND FLOAT ASSEMBLY SHOULD BE INSTALLED IN ACCORDANCE WITH CURRENT ANSI/ASPS/ICC REGULATIONS
4. HYDRA LINER TRACK FOR STEPS IS INSTALLED WITH THE BARB FACING THE RISER WALL ON THE STEP.

EXCAVATION NOTES:

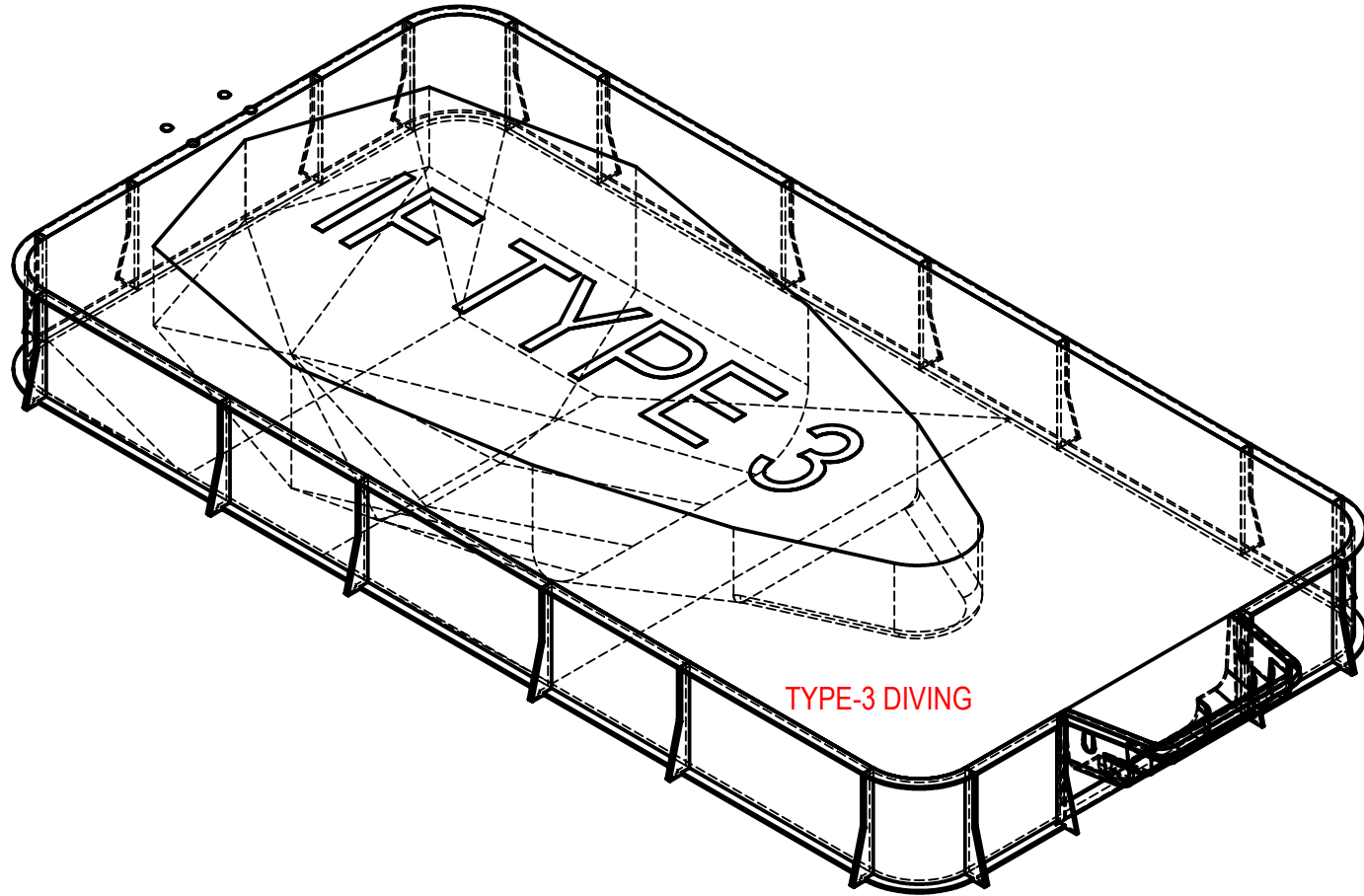
5. ROUGH EXCAVATION SHOULD BE 2" DEEPER IN EACH INSTANCE.
6. SOIL TO HAVE MINIMUM BEARING CAPACITY OF 1500 PSF.
7. LOCATE TOP OF POOL AT LEAST 6" ABOVE THE SURROUNDING LAND ELEVATION.
8. SEE "OVER DIG DETAIL" FOR EXCAVATION AROUND POOL.
9. FILL VOIDS UNDER BASE OF PANELS AND TAMP WELL.
10. BACK FILL WITH NON-EXPANSIVE MATERIAL.
11. FOLLOW ALL CURRENT ANSI / APSP / ICC GUIDELINES FOR RESIDENTIAL POOLS

IMPORTANT NOTES:

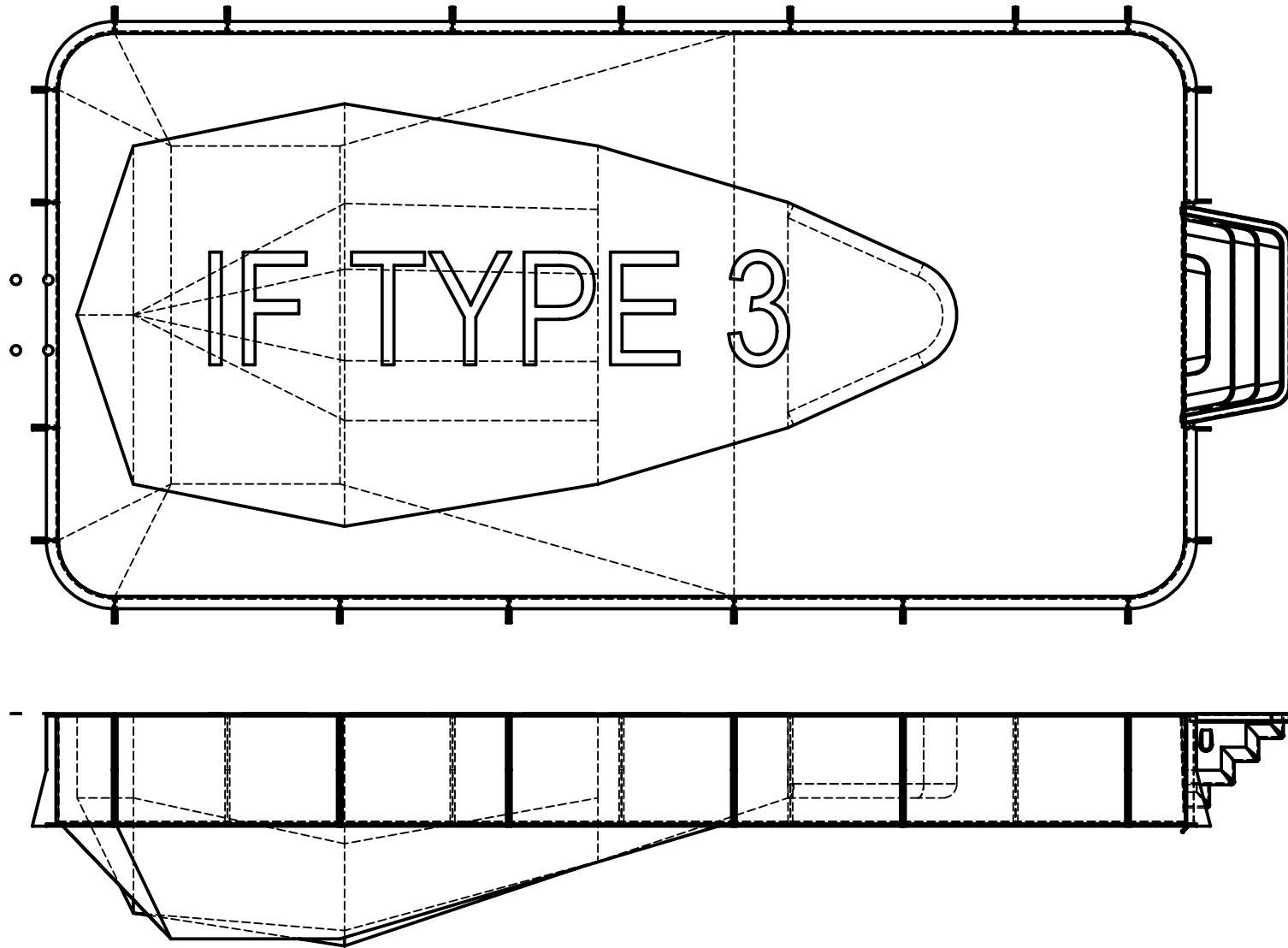
THIS DOCUMENT IS FOR ILLUSTRATIVE PURPOSES ONLY. THE DEALER OR CONTRACTOR WHO SELLS OR INSTALLS YOUR POOL IS AN INDEPENDENT CONTRACTOR AND IS NOT AN AGENT OF THE MANUFACTURER. THE CONSTRUCTION METHODS ILLUSTRATED HERE ARE SUGGESTIONS AND APPLY ONLY TO NORMAL GROUND CONDITIONS. THERE MAY BE ADDITIONAL PRECAUTIONS AND/OR METHODS OF CONSTRUCTION. PROPER INSTALLATION IS THE RESPONSIBILITY OF THE DEALER/BUILDER/CONTRACTOR.



ENGINEERING DRAWING NUMBER HL20402R8048	WEIGHT: lbs	UNLESS OTHERWISE SPECIFIED DIMENSIONS ARE IN INCHES TOLERANCES DECIMALS: X ± XX ± XXX ± XXXX ± ANGULAR: X ± 0.5 THIRD ANGLE PROJECTION	DESIGNED BY:	CREATION DATE: 04/03/13	HYDRA POOLS			
	VOLUME: 30678.50 Inch³		DETAILED BY: MWILLIAMS	DETAILED DATE: 03/06/20				
	COLOR:		LAST REVISED BY: mwilliams	LAST REVISED DATE: 01/07/20	TITLE: STANDARD LINER, 20' X 40' RECTANGLE, 2' RADIUS, 8' DEEP, 48" WALL			
	HEAT TREAT:		MATERIAL:					
	FINISH:		SIZE: A	SHEET: 2 OF 4	SCALE: 1:96	PART NUMBER: HL20402R8048	REV	A
	TEXTURE:							



ENGINEERING DRAWING NUMBER: 00029185	WEIGHT: lbs	UNLESS OTHERWISE SPECIFIED DIMENSIONS ARE IN INCHES TOLERANCES DECIMALS: X ± XX ± XXX ± XXXX ± ANGULAR: X ± 0.5 THIRD ANGLE PROJECTION 	DESIGNED BY: MWILLIAMS	CREATION DATE: 05/14/13	SAMSON STEEL		
	VOLUME: Inch³		DETAILED BY: MWILLIAMS	DETAILED DATE: 03/06/20			
	COLOR:		LAST REVISED BY: mwiliams	LAST REVISED DATE: 03/06/20	TITLE: LAYOUT, 20' X 40', RECTANGLE, 2' RADIUS, 8' DEEP, HS4810N, LIGHTS, 3- INLETS, 2- 1084, 900 SERIES		
	HEAT TREAT:		MATERIAL:				
	FINISH:		SIZE: A	SHEET: 3 OF 4	SCALE: 1:128	PART NUMBER: 00029185	REV A
	TEXTURE:						



ENGINEERING DRAWING NUMBER: 00029185	WEIGHT: lbs	UNLESS OTHERWISE SPECIFIED DIMENSIONS ARE IN INCHES TOLERANCES DECIMALS: X ± XX ± XXX ± XXXX ± ANGULAR: X ± 0.5 THIRD ANGLE PROJECTION 	DESIGNED BY: MWILLIAMS	CREATION DATE: 05/14/13	SAMSON STEEL			
	VOLUME: Inch³		DETAILED BY: MWILLIAMS	DETAILED DATE: 03/06/20	TITLE: LAYOUT, 20' X 40', RECTANGLE, 2' RADIUS, 8' DEEP, HS4810N, LIGHTS, 3- INLETS, 2- 1084, 900 SERIES			
	COLOR:		LAST REVISED BY: mwilliams	LAST REVISED DATE: 03/06/20				
	HEAT TREAT:		MATERIAL:					
	FINISH:		SIZE: A	SHEET: 4 OF 4	SCALE: 1:128	PART NUMBER: 00029185	REV	A
	TEXTURE:							