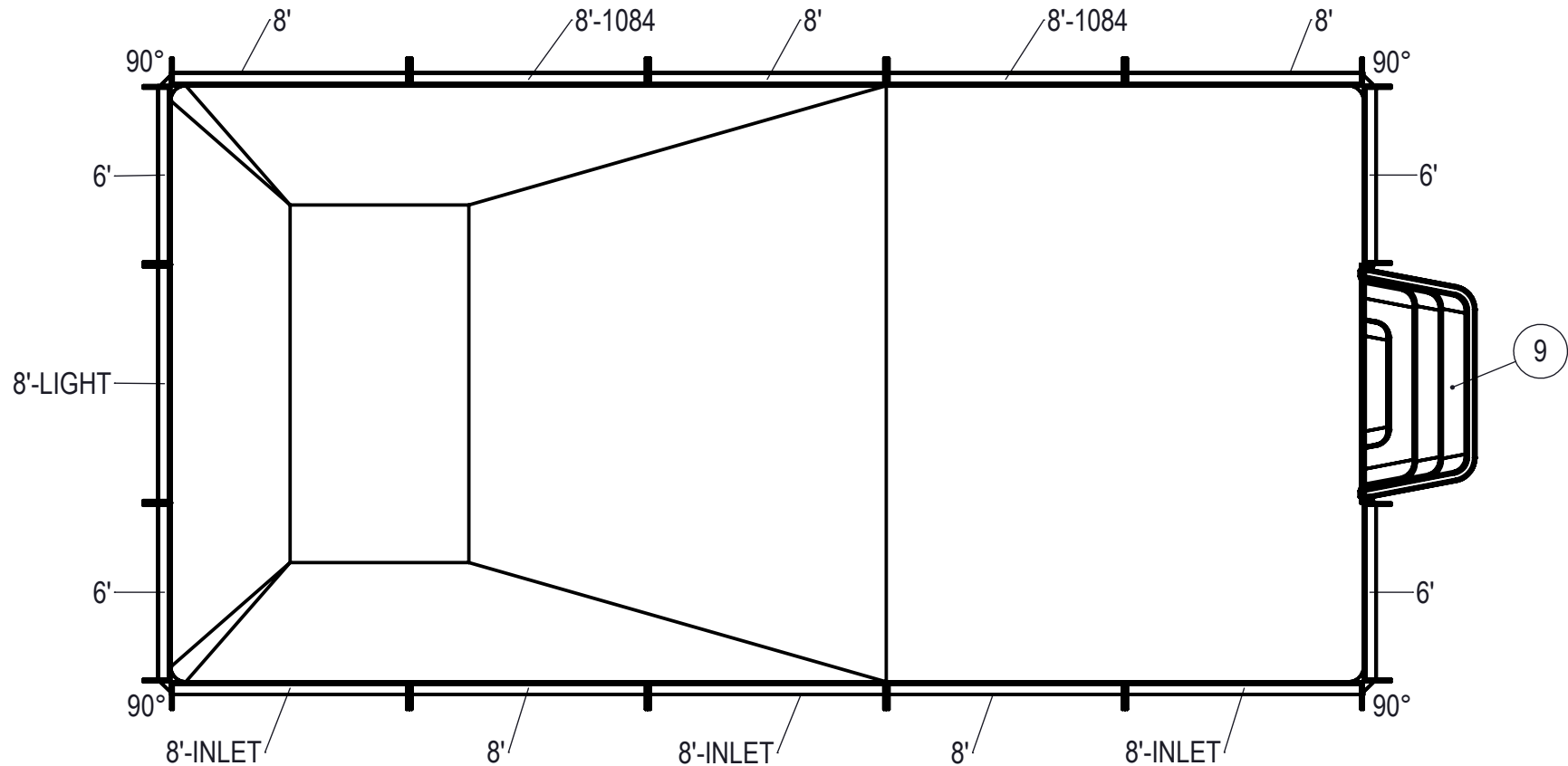


REVISION HISTORY				
REV.	DESCRIPTION	DATE	ECO	BY
A	RELEASED FOR QUOTE	09/13/18		MWILLIAMS



NOTES:

1. THESE ARE FINISHED DIMENSIONS READY FOR THE LINER.
2. DIMENSIONS ARE FROM INSIDE POOL PANELS.
3. ROPE AND FLOAT ASSEMBLY SHOULD BE INSTALLED IN ACCORDANCE WITH CURRENT ANSI/ASPS/ICC REGULATIONS
4. HYDRA LINER TRACK FOR STEPS IS INSTALLED WITH THE BARB FACING THE RISER WALL ON THE STEP.

EXCAVATION NOTES:

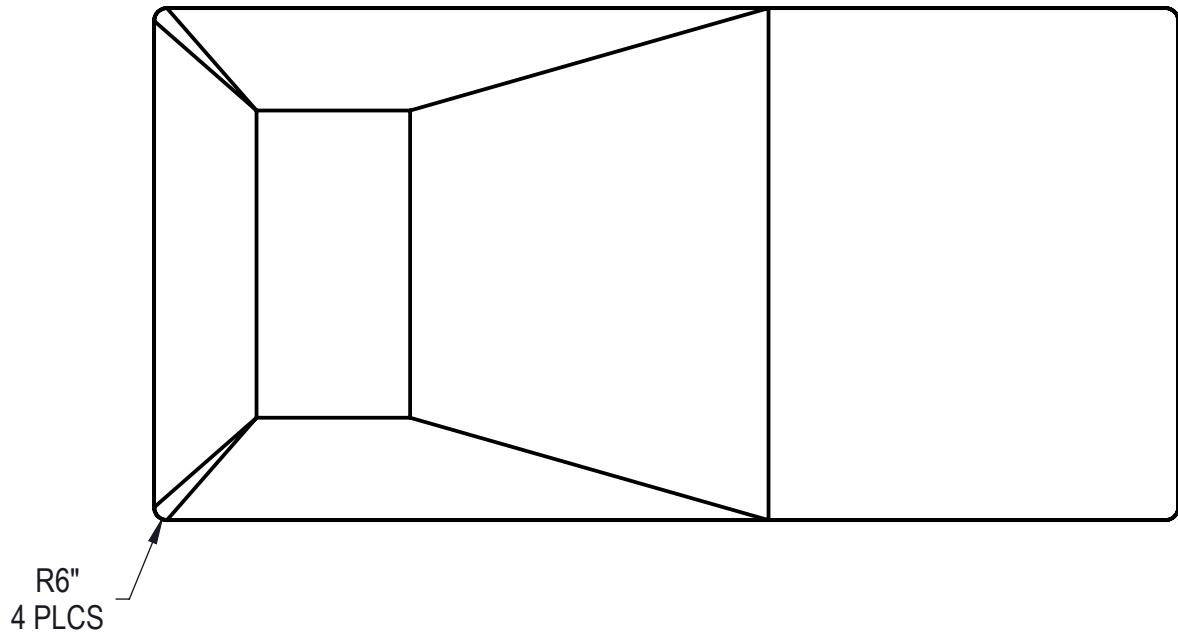
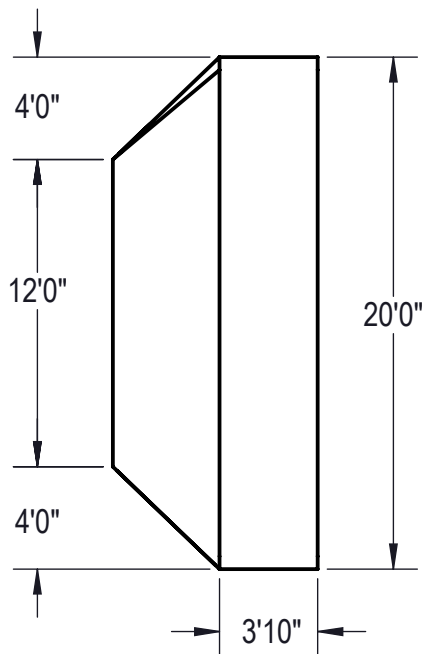
5. ROUGH EXCAVATION SHOULD BE 2" DEEPER IN EACH INSTANCE.
6. SOIL TO HAVE MINIMUM BEARING CAPACITY OF 1500 PSF.
7. LOCATE TOP OF POOL AT LEAST 6" ABOVE THE SURROUNDING LAND ELEVATION.
8. SEE "OVER DIG DETAIL" FOR EXCAVATION AROUND POOL.
9. FILL VOIDS UNDER BASE OF PANELS AND TAMP WELL.
10. BACK FILL WITH NON-EXPANSIVE MATERIAL.
11. FOLLOW ALL CURRENT ANSI / APSP / ICC GUIDELINES FOR RESIDENTIAL POOLS

IMPORTANT NOTES:

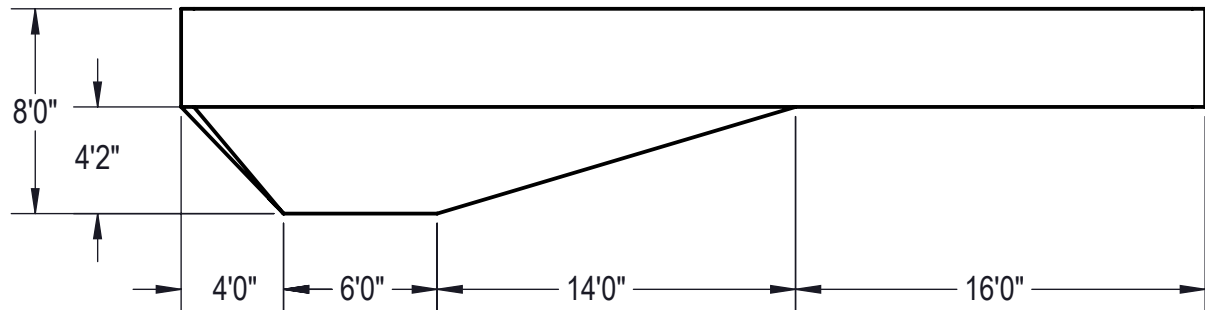
THIS DOCUMENT IS FOR ILLUSTRATIVE PURPOSES ONLY. THE DEALER OR CONTRACTOR WHO SELLS OR INSTALLS YOUR POOL IS AN INDEPENDENT CONTRACTOR AND IS NOT AN AGENT OF THE MANUFACTURER. THE CONSTRUCTION METHODS ILLUSTRATED HERE ARE SUGGESTIONS AND APPLY ONLY TO NORMAL GROUND CONDITIONS. THERE MAY BE ADDITIONAL PRECAUTIONS AND/OR METHODS OF CONSTRUCTION. PROPER INSTALLATION IS THE RESPONSIBILITY OF THE DEALER/BUILDER/CONTRACTOR.

ITEM	FILE NAME	DESCRIPTION	CUSTOMER DRAWING #	VENDOR PART #	QTY.
1	BOLT, PACK	BOLT, FLANGE, 3/8-16 X 1", PACK (50)	HPS1916	HPS1916	5
2	SBRACE	BRACE, FOLD OVER WITH TURNBUCKLE, STEEL, 48", HPSFFOB	HPSFFOB	00013156	20
3	PANEL, STRAIGHT	PANEL, 6' LONG, 900 SERIES	HPSFD106P	00013238	4
4	PANEL, STRAIGHT	PANEL, 8' LONG, 1084, 900 SERIES	HPSFD10884	00013285	2
5	PANEL, STRAIGHT	PANEL, 8' LONG, 900 SERIES	HPSFD108P	00013240	5
6	PANEL, STRAIGHT	PANEL, 8' LONG, INLET, 900 SERIES	HPSFD108I	00013263	3
7	PANEL, STRAIGHT	PANEL, 8' LONG, LIGHT, 900 SERIES	HPSFD108L	00013276	1
8	STAKE	STAKE, 14 GA	HPSSTAKE	00003484	20
9	HS4810N	STEP, 8', STRAIGHT, 4 TREAD, TWIN SEAT, 48" WALL, BULLNOSE	HS4810N	HS4810N	1
10	PANEL, WEDGE	WEDGE, 2 1/2" X 2 1/2" X 90° 900 ASSEMBLY	HPSFD6CA	00012860	4

ENGINEERING DRAWING NUMBER: 00021107	WEIGHT: lbs	UNLESS OTHERWISE SPECIFIED DIMENSIONS ARE IN INCHES TOLERANCES DECIMALS: X ± .1 XX ± .01 XXX ± .001 XXXX ± .0005 ANGULAR: X ± 0.5 THIRD ANGLE PROJECTION	DESIGNED BY: JRITTENHOUSE	CREATION DATE: 2/10/2017	SAMSON STEEL TITLE: LAYOUT, 20' X 40' RECTANGLE, 6" RADIUS, 8' DEEP, HS4810N, LIGHT, 3- INLET, 2- 1084, 900 SERIES PART NUMBER: <div style="font-size: 2em; font-weight: bold;">00021107</div>
	VOLUME: Inch³		DETAILED BY: MWILLIAMS	DETAILED DATE: 9/13/2018	
	COLOR:		LAST REVISED BY: mwiliams	LAST REVISED DATE: 9/13/2018	
	HEAT TREAT:		MATERIAL:		
	FINISH:				
TEXTURE:			SCALE: 1:48 SHEET: 1 OF 3		SIZE: A



Area: 799.79ft ^2
Perimeter: 119.14ft
Volume = 30788 US gallons



NOTES:

1. THESE ARE FINISHED DIMENSIONS READY FOR THE LINER.
2. DIMENSIONS ARE FROM INSIDE POOL PANELS.
3. ROPE AND FLOAT ASSEMBLY SHOULD BE INSTALLED IN ACCORDANCE WITH CURRENT ANSI/APSP/ICC REGULATIONS
4. HYDRA LINER TRACK FOR STEPS IS INSTALLED WITH THE BARB FACING THE RISER WALL ON THE STEP.

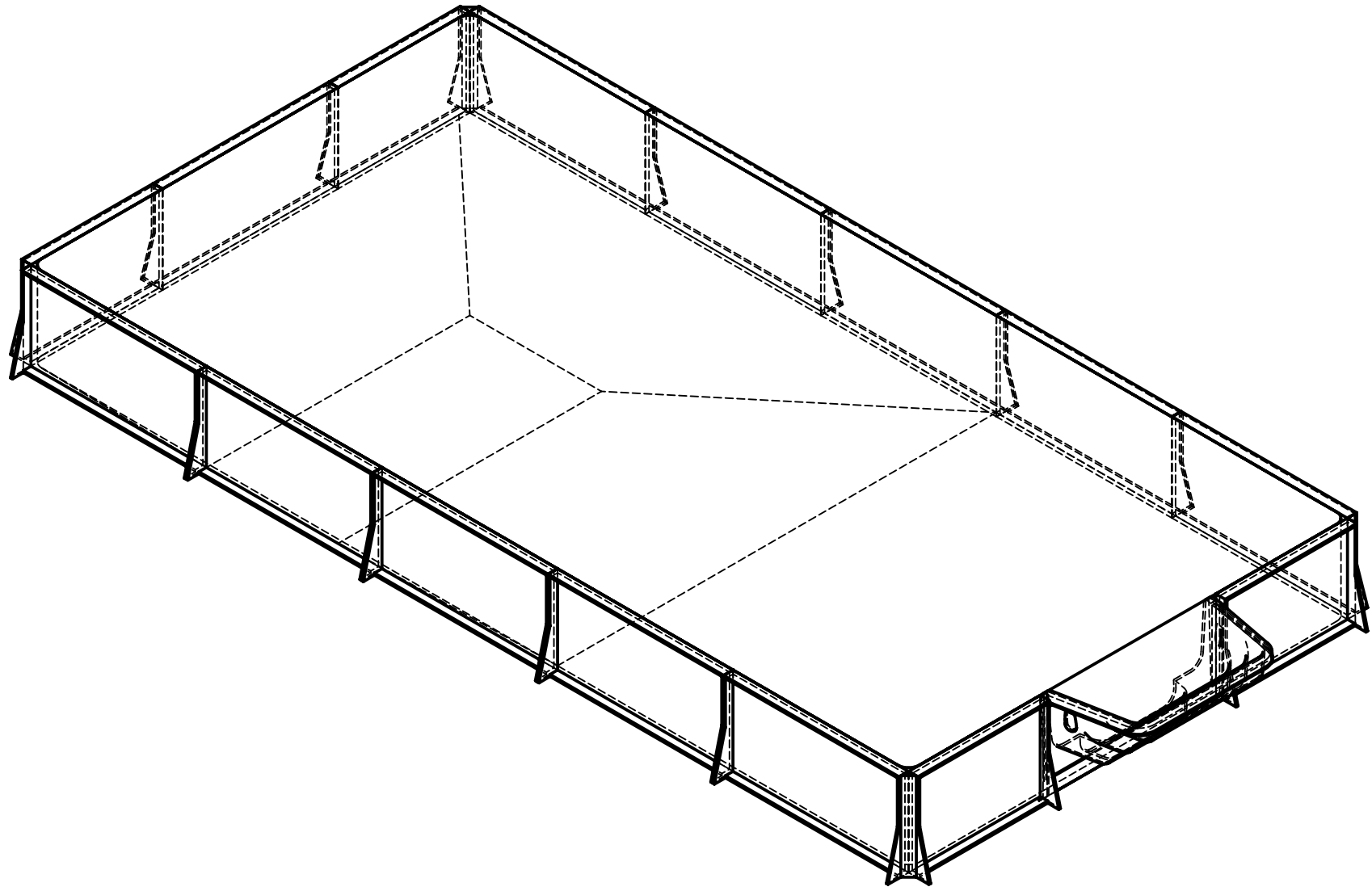
EXCAVATION NOTES:

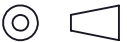
5. ROUGH EXCAVATION SHOULD BE 2" DEEPER IN EACH INSTANCE.
6. SOIL TO HAVE MINIMUM BEARING CAPACITY OF 1500 PSF.
7. LOCATE TOP OF POOL AT LEAST 6" ABOVE THE SURROUNDING LAND ELEVATION.
8. SEE "OVER DIG DETAIL" FOR EXCAVATION AROUND POOL.
9. FILL VOIDS UNDER BASE OF PANELS AND TAMP WELL.
10. BACK FILL WITH NON-EXPANSIVE MATERIAL.
11. FOLLOW ALL CURRENT ANSI / APSP / ICC GUIDELINES FOR RESIDENTIAL POOLS

IMPORTANT NOTES:

THIS DOCUMENT IS FOR ILLUSTRATIVE PURPOSES ONLY. THE DEALER OR CONTRACTOR WHO SELLS OR INSTALLS YOUR POOL IS AN INDEPENDENT CONTRACTOR AND IS NOT AN AGENT OF THE MANUFACTURER. THE CONSTRUCTION METHODS ILLUSTRATED HERE ARE SUGGESTIONS AND APPLY ONLY TO NORMAL GROUND CONDITIONS. THERE MAY BE ADDITIONAL PRECAUTIONS AND/OR METHODS OF CONSTRUCTION. PROPER INSTALLATION IS THE RESPONSIBILITY OF THE DEALER/BUILDER/CONTRACTOR.

ENGINEERING DRAWING NUMBER: 00021107	WEIGHT: 256934.384 lbs	UNLESS OTHERWISE SPECIFIED DIMENSIONS ARE IN INCHES TOLERANCES DECIMALS: X ± .1 XX ± .01 XXX ± .001 XXXX ± .0005 ANGULAR: X ± 0.5 THIRD ANGLE PROJECTION 	DESIGNED BY: JRITTENHOUSE	CREATION DATE: 2/10/2017	SAMSON STEEL	
	VOLUME: 7111921.285 Inch³		DETAILED BY: MWILLIAMS	DETAILED DATE: 9/13/2018		
	COLOR: NA		LAST REVISED BY: mwilliams	LAST REVISED DATE: 9/13/2018	TITLE: LAYOUT, 20' X 40' RECTANGLE, 6" RADIUS, 8" DEEP, HS4810N, LIGHT, 3- INLET, 2- 1084, 900 SERIES	
	HEAT TREAT: NA		MATERIAL: Water			
	FINISH: NA				PART NUMBER: 00021107	SCALE: 1:48 SHEET: 2 OF 3
	TEXTURE: NA					SIZE: A



ENGINEERING DRAWING NUMBER 00021107	WEIGHT:		UNLESS OTHERWISE SPECIFIED DIMENSIONS ARE IN INCHES TOLERANCES DECIMALS: X ± .1 XX ± .01 XXX ± .001 XXXX ± .0005 ANGULAR: X ± 0.5 THIRD ANGLE PROJECTION 	DESIGNED BY: JRITTENHOUSE		CREATION DATE: 2/10/2017		SAMSON STEEL			
	VOLUME: Inch³			DETAILED BY: MWILLIAMS		DETAILED DATE: 9/13/2018					
	COLOR:			LAST REVISED BY: mwiliams		LAST REVISED DATE: 9/13/2018		TITLE: LAYOUT, 20' X 40' RECTANGLE, 6" RADIUS, 8" DEEP, HS4810N, LIGHT, 3- INLET, 2- 1084, 900 SERIES			
	HEAT TREAT:			MATERIAL:							
	FINISH:										
	TEXTURE:										
	NA			PART NUMBER: 00021107				SCALE: 1:72		SIZE: A	
								SHEET: 3 OF 3			