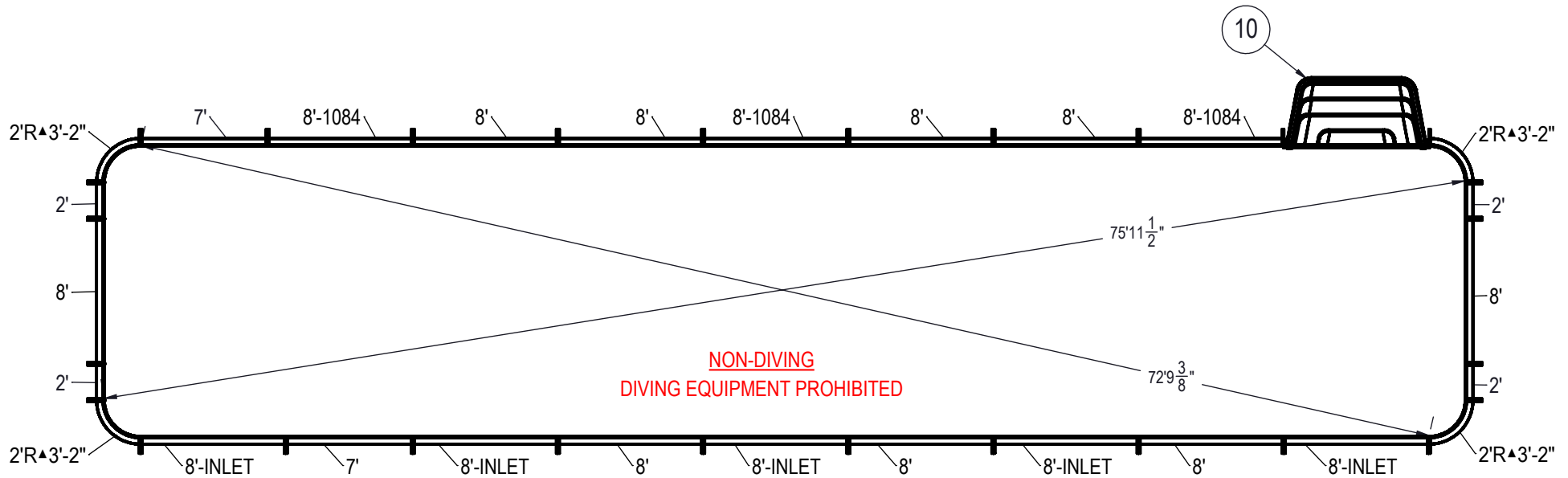


REVISION HISTORY				
REV.	DESCRIPTION	DATE	ECO	BY
A	RELEASE FOR QUOTE	4/21/2020		adold



NOTES:

- THESE ARE FINISHED DIMENSIONS READY FOR THE LINER.
- DIMENSIONS ARE FROM INSIDE POOL PANELS.
- ROPE AND FLOAT ASSEMBLY SHOULD BE INSTALLED IN ACCORDANCE WITH CURRENT ANSI/ASPS/ICC REGULATIONS
- HYDRA LINER TRACK FOR STEPS IS INSTALLED WITH THE BARB FACING THE RISER WALL ON THE STEP.

EXCAVATION NOTES:

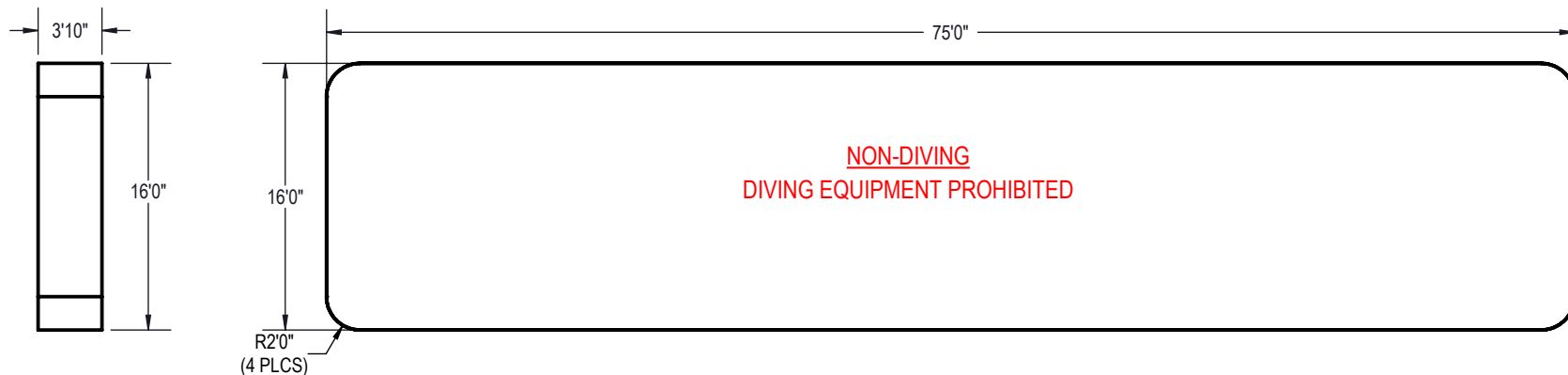
- ROUGH EXCAVATION SHOULD BE 2" DEEPER IN EACH INSTANCE.
- SOIL TO HAVE MINIMUM BEARING CAPACITY OF 1500 PSF.
- LOCATE TOP OF POOL AT LEAST 6" ABOVE THE SURROUNDING LAND ELEVATION.
- SEE "OVER DIG DETAIL" FOR EXCAVATION AROUND POOL.
- FILL VOIDS UNDER BASE OF PANELS AND TAMP WELL.
- BACK FILL WITH NON-EXPANSIVE MATERIAL.
- FOLLOW ALL CURRENT ANSI / APSP / ICC GUIDELINES FOR RESIDENTIAL POOLS

IMPORTANT NOTES:

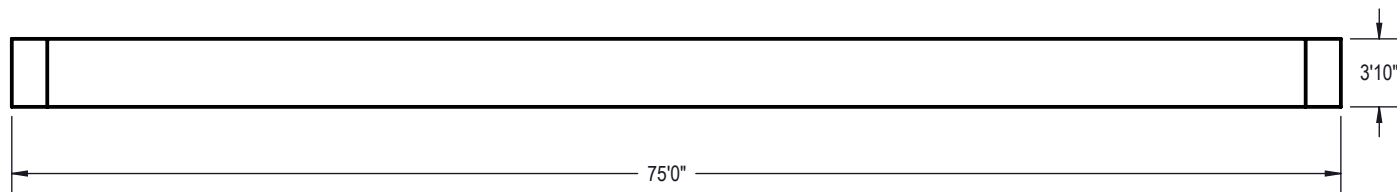
THIS DOCUMENT IS FOR ILLUSTRATIVE PURPOSES ONLY. THE DEALER OR CONTRACTOR WHO SELLS OR INSTALLS YOUR POOL IS AN INDEPENDENT CONTRACTOR AND IS NOT AN AGENT OF THE MANUFACTURER. THE CONSTRUCTION METHODS ILLUSTRATED HERE ARE SUGGESTIONS AND APPLY ONLY TO NORMAL GROUND CONDITIONS. THERE MAY BE ADDITIONAL PRECAUTIONS AND/OR METHODS OF CONSTRUCTION. PROPER INSTALLATION IS THE RESPONSIBILITY OF THE DEALER/BUILDER/CONTRACTOR.

ITEM	FILE NAME	DESCRIPTION	CUSTOMER DRAWING #	VENDOR PART #	QTY.
1	BOLT, PACK	BOLT, FLANGE, 3/8-16 X 1", PACK (50)	HPS1916	HPS1916	12
2	SBRACE	BRACE, FOLD OVER WITH TURNBUCKLE, STEEL, 48", HPSFFOB	HPSFFOB	00013156	28
3	PANEL, STRAIGHT	PANEL, 2' LONG, 900 SERIES	HPSFD102P	00013234	4
4	PANEL, RADIUS	PANEL, 2' RADIUS, 3-2" LONG, 900 SERIES	HPSFD2R	00013298	4
5	PANEL, STRAIGHT	PANEL, 7' LONG, 900 SERIES	HPSFD107P	00013239	2
6	PANEL, STRAIGHT	PANEL, 8' LONG, 1084, 900 SERIES	HPSFD10884	00013285	3
7	PANEL, STRAIGHT	PANEL, 8' LONG, 900 SERIES	HPSFD108P	00013240	9
8	PANEL, STRAIGHT	PANEL, 8' LONG, INLET, 900 SERIES	HPSFD108I	00013263	5
9	STAKE	STAKE, 14 GA	HPSSTAKE	00003484	28
10	HS4810N	STEP, 8' STRAIGHT, 4 TREAD, TWIN SEAT, 48" WALL, BULL NOSE	HS4810N	HS4810N	1

ENGINEERING DRAWING NUMBER: 00029742	WEIGHT: lbs	UNLESS OTHERWISE SPECIFIED DIMENSIONS ARE IN INCHES TOLERANCES DECIMALS: X ± XX ± XXX ± XXXX ± ANGULAR: X ± 0.5 THIRD ANGLE PROJECTION	DESIGNED BY: ADOLD	CREATION DATE: 4/9/2013	ATLAS STEEL	
	VOLUME: Inch³		DETAILED BY: adold	DETAILED DATE: 4/21/2020		
	COLOR:		LAST REVISED BY: adold	LAST REVISED DATE: 4/21/2020	TITLE: LAYOUT, 16' X 75', LAP, 2' RADIUS, 3'10" DEEP FLAT BOTTOM, HS110N, 5- INLETS, 3- 1084, 900 SERIES	
	HEAT TREAT:		MATERIAL:			
	FINISH:				PART NUMBER: 00029742	SCALE: 1:72
	TEXTURE:					SHEET: 1 OF 3
						SIZE: A



AREA	PERIMETER	VOLUME
SQ. FT.	FT.	U.S. GALLONS
1196.58	178.57	34311.93



NOTES:


- THESE ARE FINISHED DIMENSIONS READY FOR THE LINER.
- DIMENSIONS ARE FROM INSIDE POOL PANELS.
- ROPE AND FLOAT ASSEMBLY SHOULD BE INSTALLED IN ACCORDANCE WITH CURRENT ANSI/ASPS/ICC REGULATIONS
- HYDRA LINER TRACK FOR STEPS IS INSTALLED WITH THE BARB FACING THE RISER WALL ON THE STEP.

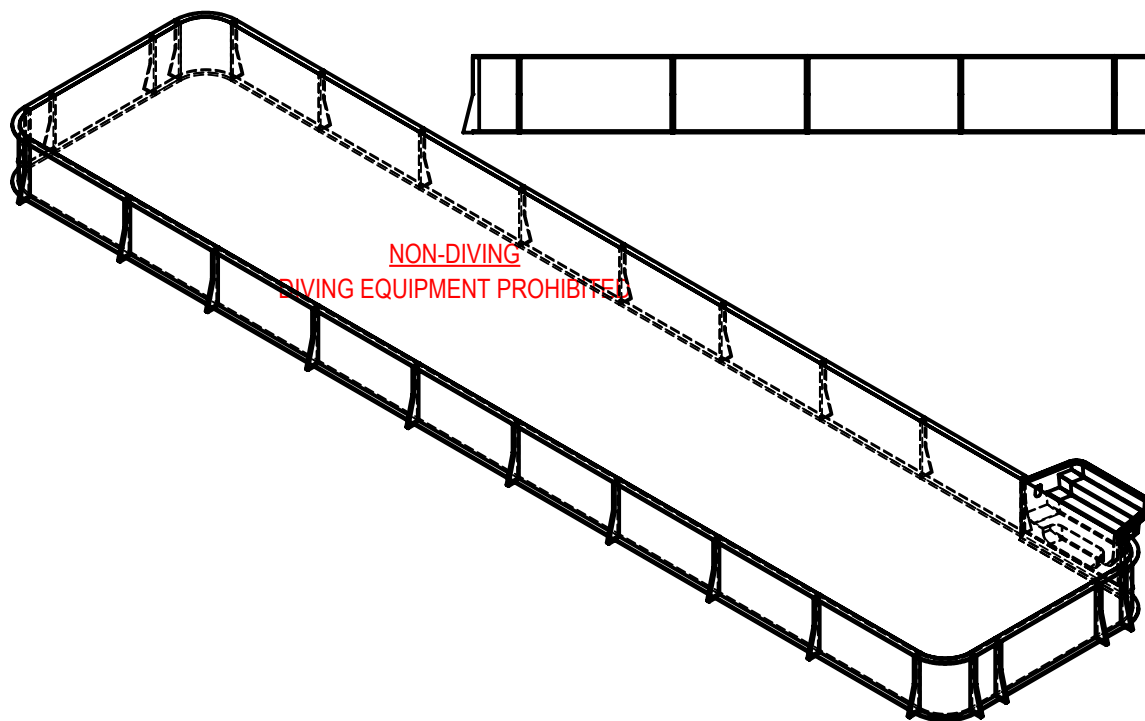
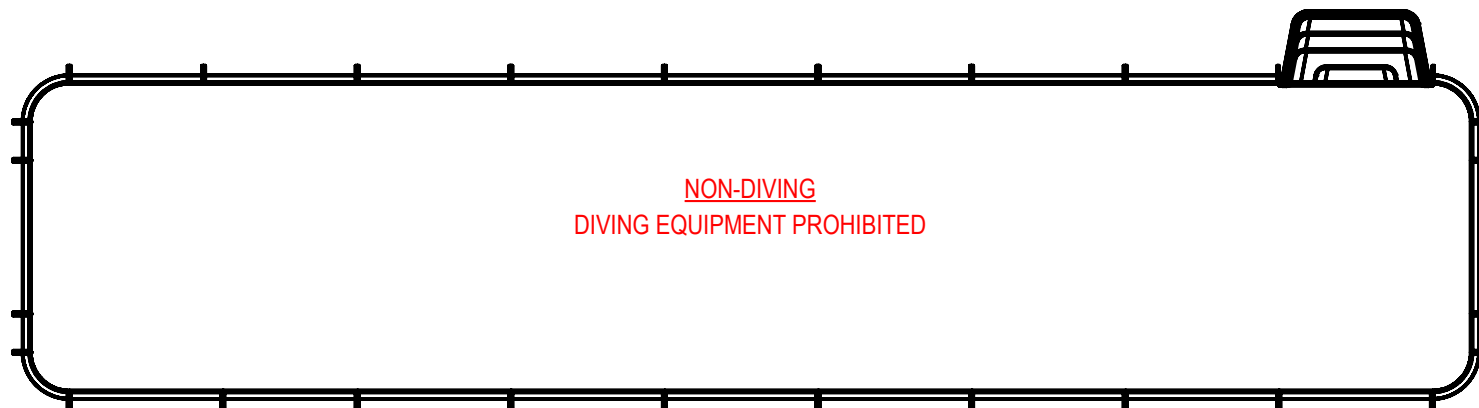
EXCAVATION NOTES:

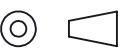
- ROUGH EXCAVATION SHOULD BE 2" DEEPER IN EACH INSTANCE.
- SOIL TO HAVE MINIMUM BEARING CAPACITY OF 1500 PSF.
- LOCATE TOP OF POOL AT LEAST 6" ABOVE THE SURROUNDING LAND ELEVATION.
- SEE "OVER DIG DETAIL" FOR EXCAVATION AROUND POOL.
- FILL VOIDS UNDER BASE OF PANELS AND TAMP WELL.
- BACK FILL WITH NON-EXPANSIVE MATERIAL.
- FOLLOW ALL CURRENT ANSI / APSP / ICC GUIDELINES FOR RESIDENTIAL POOLS

IMPORTANT NOTES:

THIS DOCUMENT IS FOR ILLUSTRATIVE PURPOSES ONLY. THE DEALER OR CONTRACTOR WHO SELLS OR INSTALLS YOUR POOL IS AN INDEPENDENT CONTRACTOR AND IS NOT AN AGENT OF THE MANUFACTURER. THE CONSTRUCTION METHODS ILLUSTRATED HERE ARE SUGGESTIONS AND APPLY ONLY TO NORMAL GROUND CONDITIONS. THERE MAY BE ADDITIONAL PRECAUTIONS AND/OR METHODS OF CONSTRUCTION. PROPER INSTALLATION IS THE RESPONSIBILITY OF THE DEALER/BUILDER/CONTRACTOR.

ENGINEERING DRAWING NUMBER: 00029742	WEIGHT:	UNLESS OTHERWISE SPECIFIED DIMENSIONS ARE IN INCHES TOLERANCES DECIMALS: X ± XX ± XXX ± XXXX ± ANGULAR: X ± 0.5 THIRD ANGLE PROJECTION 	DESIGNED BY:	CREATION DATE:	ATLAS STEEL	
	lbs		ADOLD	4/9/2013		
	VOLUME:		DETAILED BY:	DETAILED DATE:	TITLE: LAYOUT, 16' X 75', LAP, 2' RADIUS, 3'10" DEEP FLAT BOTTOM, HS110N, 5- INLETS, 3- 1084, 900 SERIES	
	34311.93 Inch³		adold	4/21/2020		
	COLOR:		LAST REVISED BY:	LAST REVISED DATE:		
			adold	4/21/2020		
	HEAT TREAT:		MATERIAL:			
FINISH:	PART NUMBER:				SCALE:	SIZE:
TEXTURE:	00029742				1:128	A
					SHEET:	
					2 OF 3	



ENGINEERING DRAWING NUMBER: 00029742	WEIGHT: lbs	UNLESS OTHERWISE SPECIFIED DIMENSIONS ARE IN INCHES TOLERANCES DECIMALS: X ± XX ± XXX ± XXXX ± ANGULAR: X ± 0.5 THIRD ANGLE PROJECTION 	DESIGNED BY: ADOLD	CREATION DATE: 4/9/2013	ATLAS STEEL	
	VOLUME: Inch³		DETAILED BY: adold	DETAILED DATE: 4/21/2020		
	COLOR:		LAST REVISED BY: adold	LAST REVISED DATE: 4/21/2020	TITLE: LAYOUT, 16' X 75', LAP, 2' RADIUS, 3'10" DEEP FLAT BOTTOM, HS110N, 5- INLETS, 3- 1084, 900 SERIES	
	HEAT TREAT:		MATERIAL:			
	FINISH:				PART NUMBER: 00029742	
	TEXTURE:					
					SCALE: 1:60 SHEET: 3 OF 3	SIZE: A